

**HOSE, CORD, & CABLE REELS**

# **EZ-COIL<sup>®</sup>**

**SAFETY REELS**

**COXREELS SINCE 1923**





# EZ-COIL® REELS



**IT'S NOT JUST A LABEL,  
IT'S A BADGE OF HONOR**

Hose, cord, and cable reels are essential components for applications that require high product flow and/or longer hose such as general duty, automotive dealerships, and service garages. Whether you need a low, medium or high-pressure rating, for grease, oil or air and water, Coxreels offers a reel to fit the application.

### ***The Recognized Industry Leader***

Coxreels is wholesale only since 1923. Our product is made to high standards, supplying industrial grade product to distributors and OEMs worldwide. We are recognized as the leader in the reeling industry. We have been providing the most complete and diverse line of hose, cord, and cable reels for 10 decades!

### ***The Most Complete Line of Safety Reels in the Market***

Coxreels' safety hose reels are designed to ensure long life in the toughest environments where large hose diameters or long lengths are required for increased flow and versatility.

Possible fields of application:

- Air/Water Services
- Lubrication
- Welding Shops
- Chemical Fluid Transfer
- General Industrial
- Mining & Railroad
- Fuel Delivery
- Chemical Plants
- DEF Storage
- Service / Utility Trucks
- Power Tools
- Aircraft Refueling
- Pneumatic Tools
- Construction sites
- Nitrogen Dispensing
- Cabinet Mount
- Pipelines
- Potable Water

### ***Proven Reeling Solutions to Safety Needs!***

Safety hose reels not only make hoses last longer, they save time and allow for hassle-free maintenance. Compact design and quality steel construction are incorporated into Coxreels' diverse line of automotive reels. No matter what your application, we have a solution for you!

Our versatile and wide reel selection handles various capacities and comes in different sizes to suit any service vehicle requirement. Our standard reeling devices suggested in this catalog are already specified to meet the needs of the utility and service markets. Coxreels also has the engineering power to design and build custom reels, so please consult the factory if you cannot locate a reel that will work with your equipment, we will be happy to assist you with a solution.

**VALUE THE DIFFERENCE...**

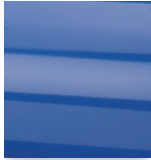
**Make COXREELS your reel choice!**





# PROFESSIONAL GRADE FEATURES

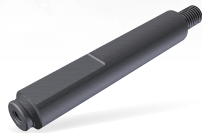
## A HIGHER LEVEL OF STANDARDS



**CPC™ POWDER COAT**  
Our blue powder coat finish is long lasting, chip resistant & rust inhibiting



**BRASS SWIVEL**  
External fluid path, machined from solid brass, full flow, swivel for simple seal maintenance



**STEEL AXLE**  
1" solid steel axle & lubricated bearings for extra strength & durability. Not a hollow tube & no fluid travels through it



**STEEL CONSTRUCTION**  
High-Quality steel construction provides superior strength and durability for heavy-duty applications in commercial and industrial settings



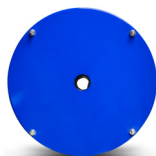
**COMPONENT COVER**  
External CPC powder coated steel components cover for simple slip ring routine maintenance



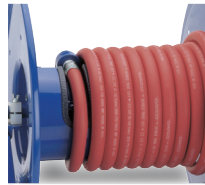
**EZ-COIL® SERIES**  
A patented safety system that retracts up to 80% slower than conventional reels



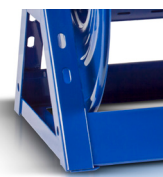
**CNC SPUN DISCS**  
All steel rolled edges & ribbed discs for added safety, strength & durability



**CARTRIDGE MOTOR**  
Enclosed factory tuned & matched cartridge style motor for safe & easy replacement



**LOW PROFILE RISER**  
Low profile riser with open drum slot allows for smooth even hose wraps that will not pinch or bind your hose. **NO HUMP!**



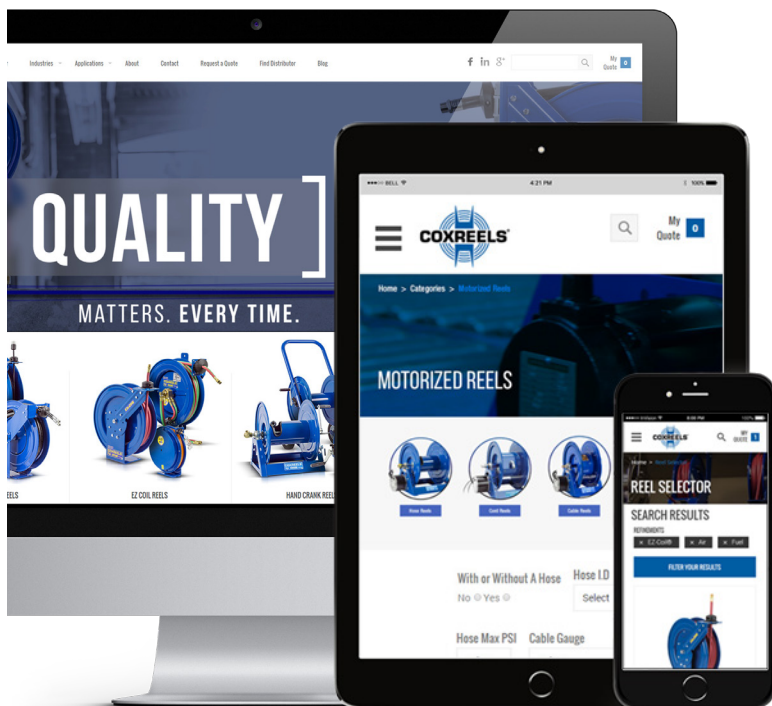
**ALL WELDED STEEL "A" FRAME**  
All welded steel "A" frame for strength & durability. **NOT BOLTED!**



**2 YEAR WARRANTY**  
Coxreels proudly stands behind our reels as they are built to last!



**USA MADE, QUALITY & SUPPORT**  
We take great pride in designing, building & supplying the world's finest reels made right here in the U.S.A.



## VISIT US ONLINE

Coxreels is committed to providing our customers with the ultimate online experience as they navigate through the most complete and diverse line of hose, cord, and cable reels.

We hope that you enjoy the fresh look and feel of our updated website and find that this portal serves as a valuable resource for you!

FOLLOW US



[www.coxreels.com](http://www.coxreels.com) • 1.800.COX.REEL

EZ-COIL® REELS

**FOCUS** ON THE FEATURES

**EZ-COIL® SPRING DRIVEN REELS**

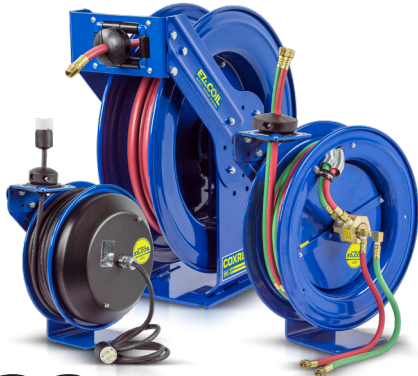
# EZ-COIL®

## SAFETY CONTROLLED RETRACTION

COXREELS Safety Series reels featuring the patented EZ-Coil® Rewind Safety System, engineered and developed exclusively by Coxreels, are the only choice for safe spring driven hose, cord, and cable reel operation in the workplace. EZ-Coil® works uni-directionally without any increase to the amount of resistance when pulling out the hose, cord, or cable. But, when engaged upon recoil, it controls the aggressive spring motor energy resulting in a reel that retracts at a safe and steady pace!

### INCREASED SAFETY HOW?

- ▶ Reduce retraction speed by up to 80%
- ▶ Control hose or cord whip hazard
- ▶ Requires no external power source
- ▶ Enhance operator & workplace safety
- ▶ Keep your workplace organized
- ▶ Utilize space & maximize efficiency
- ▶ Improve hose, cord, & cable management
- ▶ Extend longevity of hose, cord, & cable
- ▶ Increase productivity



up to	<b>80% Slower Retraction</b>	
	Conventional SPRING DRIVEN REELS	COXREELS® EZ-COIL
	<b>SPEED</b>	25 ft./sec.      5 ft./sec.
	<b>WHIPPING</b>	5-15 ft.      1 ft.
<b>IMPACT</b>	500 ft./lbs.      0-1 ft./lbs.	

Based on an independent evaluation performed by COXREELS. Depending on certain conditions, results may vary.



Go online to view **EZ-COIL** catalog & videos of features & benefits at [www.COXREELS.com](http://www.COXREELS.com)





# OUR PATENTED SAFETY SYSTEM WITH RETRACTION SPEED UP TO 80% SLOWER THAN CONVENTIONAL SPRING DRIVEN REELS

**SPIRAL HOSE GUARD** protects hose against premature wear

**HEAVY DUTY, SPUN DISCS** with rolled edges for greater strength, made with first of it's kind CNC robotic spin cell

**ADJUSTABLE, SOLID RUBBER HOSE STOP** for lead length positioning

**VERSATILE GUIDE ARM** made from 10 gauge steel with stamped ribs for added rigidity, adjusts to wall, floor, ceiling, & vehicle mounting

**SOLID STEEL ZINC PLATED LOCKING RING** offers 8 ratchet positions per rotation for ease of use

**LOCKING PAWL, SPECIALLY ANGLED** prevents lockout, both pawl and spring are from stainless steel for trouble free longevity

**EXTERNAL FLUID PATH MACHINED FROM SOLID BRASS 90° FULL-FLOW NPT SWIVEL** that screws directly on 1" solid steel axle, provides simple seal maintenance & fast and easy hose installation

**HIGH QUALITY STEEL CONSTRUCTION** with our durable CPC™ powder coat finish

**ENCLOSED FACTORY TUNED AND MATCHED CARTRIDGE-STYLE SPRING MOTOR** for safe & easy maintenance

**HEAVY GAUGE 1/4" STEEL BASE & SUPPORT POST, SINGLE PIECE CONSTRUCTION WITH NO WELDS** for maximum stability

**SUPER HUB™ EQUIPPED MODELS:**  
**INCREASED REEL STRENGTH** for more demanding applications with multiple support to the axle



## CORD REELS FEATURE:

**HEAVY GAUGE POWDER COATED STEEL COMPONENTS COVER** protecting the slip ring & all electrical components

**INCLUDES 5' LEAD CABLE & GROUNDING PLUG**  
(Except on less cord models)

**CHOICE OF ELECTRICAL ACCESSORIES**





1/4" - 1/2" I.D.

# EZ-P SERIES PERFORMANCE HOSE REELS



**COXREELS® EZ-P Series "Performance" spring driven hose reels have a long history of dependability and hassle free performance.** Their compact space-saving size and heavy duty construction make them highly versatile and virtually indestructible. Time-tested proven components, superior design and craftsmanship have contributed to it's worldwide reputation as the most trusted hose reel.

## EZ-P SERIES

Do not exceed listed hose O.D. to obtain maximum length.

HOSE						LESS HOSE		SIZE INDEX
MODEL	I.D.	O.D.	FT.	PSI	APRX. LBS.	MODEL	APRX. LBS.	
<b>LOW PRESSURE</b>						Models with hose are for air water service with a maximum temperature 150°F. Models less hose can be used for air, water or oil.		
<b>EZ-P-LP-125</b>	1/4"	1/2"	25	300	27	<b>EZ-P-LPL-125</b>	24	<b>1</b>
<b>EZ-P-LP-135</b>	1/4"	1/2"	35	300	28	<b>EZ-P-LPL-135</b>	25	<b>1</b>
<b>EZ-P-LP-150</b>	1/4"	1/2"	50	300	40	<b>EZ-P-LPL-150</b>	35	<b>3</b>
<b>EZ-P-LP-325</b>	3/8"	5/8"	25	300	28	<b>EZ-P-LPL-325</b>	25	<b>2</b>
<b>EZ-P-LP-330</b>	3/8"	5/8"	30	300	37	<b>EZ-P-LPL-330</b>	33	<b>3</b>
<b>EZ-P-LP-335</b>	3/8"	5/8"	35	300	38	<b>EZ-P-LPL-335</b>	34	<b>3</b>
<b>EZ-P-LP-350</b>	3/8"	5/8"	50	300	43	<b>EZ-P-LPL-350</b>	36	<b>3</b>
<b>EZ-P-LP-430</b>	1/2"	3/4"	30	300	45	<b>EZ-P-LPL-430</b>	40	<b>4</b>
<b>EZ-P-LP-450</b>	1/2"	3/4"	50	300	48	<b>EZ-P-LPL-450</b>	43	<b>4</b>
<b>MEDIUM PRESSURE</b>						Reels are furnished with standard one wire braid hose suitable for air, water or oil applications. Hose exceeds SAE R1 specifications. Maximum Temperature 212°F. (If used with water, synthetic fluids 135°F max.)		
<b>EZ-P-MP-425</b>	1/2"	13/16"	25	2,500	49	<b>EZ-P-MPL-425</b>	42	<b>4</b>
<b>EZ-P-MP-430</b>	1/2"	13/16"	30	2,500	51	<b>EZ-P-MPL-430</b>	43	<b>4</b>
<b>HIGH PRESSURE</b>						Reels are furnished standard with S.A.E. 100R16 #1 or #2 wire braid hose suitable for grease and hydraulic oil applications. Maximum Temperature 212°F. (If used with water, synthetic fluids 135°F max.)		
<b>EZ-P-HP-125</b>	1/4"	9/16"	25	5,000	48	<b>EZ-P-HPL-125</b>	42	<b>4</b>
<b>EZ-P-HP-325</b>	3/8"	11/16"	25	4,000	49	<b>EZ-P-HPL-325</b>	42	<b>4</b>

### EZ-P SERIES :: REEL SPECIFICATIONS

#### SWIVEL

- External fluid path with machined from solid brass 90° full-flow NPT swivel inlet (Zinc plated steel swivel on HP models)
- Swivel Seals: NITRILE

#### DESIGN & STRUCTURE

- Sturdy, single pedestal reel with space saving design facilitates workplace organization
- Guide arm adjusts to wall, floor, vehicle, & overhead positions
- Solid, one piece, heavy gauge 1/4" steel base & support post for maximum stability
- 1" solid steel axle & lubricated precision bearings for smooth rotation

#### EZ-COIL RETRACTION

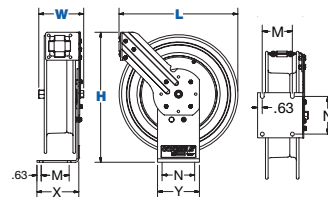
- OUR PATENTED SAFETY SYSTEM THAT RETRACTS UP TO 80% SLOWER THAN CONVENTIONAL SPRING DRIVEN REELS
- Enclosed, factory tuned & matched cartridge-style spring motor
- Non-corrosive, stainless steel spring, pawl, & zinc plated ratchet
- Multi-position lock ratchet mechanism secures hose at desired length

### REEL DIMENSIONS

Technical Data Sheets Available On Website

SIZE INDEX	W	H	L	X	Y	M	N
<b>1</b>	5 7/8"	14 7/8"	13 1/2"	5"	6"	3"	5"
<b>2</b>	6 1/2"	14 7/8"	13 1/2"	5"	6"	3"	5"
<b>3</b>	6 3/4"	18 5/8"	17 1/8"	6"	6"	4"	5"
<b>4</b>	7"	18 5/8"	17 1/8"	6"	6"	4"	5"

Overall Dimensions Base Mounting Pattern



## TOP REQUESTED UPGRADES & ACCESSORIES

SEE PAGE 17 FOR ADDITIONAL ACCESSORIES

### UPGRADE TO NITRILE OR RUBBER HOSE

**NITRILE HOSE:** Premium high quality, oil resistant, multi-purpose hose. The high tensile spiral synthetic yarn reinforcement provides excellent kink resistance. Temperature range: -20° F to +212° F.

**SYNTHETIC RUBBER HOSE:** Versatile general purpose hose. The synthetic rubber tube and cover resists heat, sunlight, ozone, and weathering. Temperature range -40° F to +212° F.

### UPGRADE TO STAINLESS STEEL SWIVEL

Based on the upgraded medium pressure swivel, the stainless steel swivel is machined from solid 316 stainless steel and features increased wall thicknesses with upgraded seals and backup rings.

### UPGRADE TO SOLID ROLLERS

Heavy duty machined from solid plastic rollers.

### ADD AIR TOOL KIT

**BEND RESTRICTOR:** Designed to limit the degree of bending without compromising the integrity of the hose assembly while also preventing the hose-end from kinking, excessive wearing, and tearing. Available for low pressure models.

**QUICK DISCONNECT:** Quick disconnect couplings tread onto end of hose fitting to provide fast, leak-proof connections for low pressure hose lines.

### ADD BEND RESTRICTOR

Designed to limit the degree of bending without compromising the integrity of the hose assembly while also preventing the hose-end from kinking, excessive wearing, and tearing. Available for low pressure models.



WARNING: Cancer and reproductive Harm – See page 19 for more information – [www.P65Warning.ca.gov](http://www.P65Warning.ca.gov)





**COXREELS® EZ-SH Series "Super Hub™" spring driven hose reels, like the EZ-P Series, have a long history of dependable performance.** The larger chassis and frame accommodate longer lengths and larger diameters of hose. Coxreels' original Super Hub™ dual axle support system increases the stability during operation, reduces vibration and strengthens the structural integrity of the reel.

## EZ-SH, EZ-MP & EZ-HP SERIES

Do not exceed listed hose O.D. to obtain maximum length.

HOSE						LESS HOSE		SIZE INDEX
MODEL	I.D.	O.D.	FT.	PSI	APRX. LBS.	MODEL	APRX. LBS.	
<b>LOW PRESSURE</b> Models with hose are for air water service with a maximum temperature 150°F. Models less hose can be used for air, water or oil.								
<b>EZ-SH-N-350</b>	3/8"	5/8"	50	300	50	<b>EZ-SHL-N-350</b>	44	<b>1</b>
<b>EZ-SH-N-375</b>	3/8"	5/8"	75	300	68	<b>EZ-SHL-N-375</b>	59	<b>2</b>
<b>EZ-SH-N-3100</b>	3/8"	5/8"	100	300	71	<b>EZ-SHL-N-3100</b>	60	<b>2</b>
<b>EZ-SH-N-450</b>	1/2"	3/4"	50	300	54	<b>EZ-SHL-N-450</b>	46	<b>1</b>
<b>EZ-SH-N-475</b>	1/2"	3/4"	75	300	68	<b>EZ-SHL-N-475</b>	57	<b>3</b>
<b>EZ-SH-N-4100</b>	1/2"	3/4"	100	300	81	<b>EZ-SHL-N-4100</b>	66	<b>3</b>
<b>EZ-SH-N-525</b>	3/4"	1 1/16"	25	300	52	<b>EZ-SHL-N-525</b>	45	<b>4</b>
<b>EZ-SH-N-550</b>	3/4"	1 1/16"	50	300	69	<b>EZ-SHL-N-550</b>	56	<b>5</b>
<b>MEDIUM PRESSURE</b> Reels are furnished with standard one wire braid hose suitable for air, water or oil applications. Hose exceeds SAE R1 specifications. Maximum Temperature 250°F.								
<b>EZ-MP-N-350</b>	3/8"	1 1/16"	50	3,000	65	<b>EZ-MPL-N-350</b>	53	<b>1</b>
<b>EZ-MP-N-450</b>	1/2"	1 3/16"	50	2,500	67	<b>EZ-MPL-N-450</b>	53	<b>6</b>
<b>HIGH PRESSURE</b> Reels are furnished standard with S.A.E. 100R16 #1 or #2 wire braid hose suitable for grease and hydraulic oil applications. Maximum Temperature 250°F.								
<b>EZ-HP-N-150</b>	1/4"	9/16"	50	5,000	64	<b>EZ-HPL-N-150</b>	53	<b>6</b>
<b>EZ-HP-N-350</b>	3/8"	1 1/16"	50	4,000	65	<b>EZ-HPL-N-350</b>	53	<b>7</b>



Double axle support with Super Hub™



## EZ-SH, EZ-MP & EZ-HP SERIES :: REEL SPECIFICATIONS

### SWIVEL

- External fluid path with machined from solid brass 90° full-flow NPT swivel inlet (Zinc plated steel swivel on HP models)

- Swivel Seals: NITRILE

### DESIGN & STRUCTURE

- Sturdy, single pedestal reel features Coxreels' exclusive Super Hub™ dual axle support system
- Guide arm adjusts to wall, floor, vehicle, & overhead positions
- Solid, one piece, heavy gauge 1/4" steel base & support post for maximum stability
- 1" solid steel axle & lubricated precision bearings for smooth rotation

### EZ-COIL RETRACTION

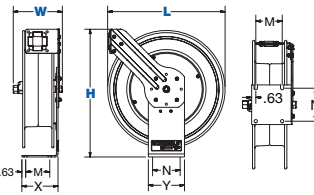
- OUR PATENTED SAFETY SYSTEM THAT RETRACTS UP TO 80% SLOWER THAN CONVENTIONAL SPRING DRIVEN REELS
- Enclosed factory tuned & matched cartridge-style spring motor
- Non-corrosive, stainless steel spring, pawl, & zinc plated ratchet
- Multi-position lock ratchet mechanism secures hose at desired length

## REEL DIMENSIONS

Technical Data Sheets Available On Website

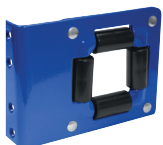
SIZE INDEX	W	H	L	X	Y	M	N
<b>1</b>	8 1/4"	21 1/4"	19 1/2"	6"	6"	4"	5"
<b>2</b>	8 1/4"	25 1/2"	24"	6"	6"	4"	5"
<b>3</b>	8 3/4"	25 1/2"	24"	6"	6"	4"	5"
<b>4</b>	9 3/4"	21 1/4"	19 1/2"	6"	6"	4"	5"
<b>5</b>	9 3/4"	25 1/2"	24"	6"	6"	4"	5"
<b>6</b>	8 3/4"	21 1/4"	19 1/2"	6"	6"	4"	5"
<b>7</b>	9 1/4"	21 1/4"	19 1/2"	6"	6"	4"	5"

Overall Dimensions Base Mounting Pattern



## TOP REQUESTED UPGRADES & ACCESSORIES

SEE PAGE 17 FOR ADDITIONAL ACCESSORIES



### UPGRADE TO SOLID ROLLERS

Heavy duty machined from solid plastic rollers.



### ADD AIR TOOL KIT

**BEND RESTRICTOR:** Designed to limit the degree of bending without compromising the integrity of the hose assembly while also preventing the hose-end from kinking, excessive wearing, and tearing. Available for low pressure models.

**QUICK DISCONNECT:** Quick disconnect couplings tread onto end of hose fitting to provide fast, leak-proof connections for low pressure hose lines.



### UPGRADE TO NITRILE OR RUBBER HOSE

**NITRILE HOSE:** Premium high quality, oil resistant, multi-purpose hose. The high tensile spiral synthetic yarn reinforcement provides excellent kink resistance. Temperature range: -20° F to +212° F.

**SYNTHETIC RUBBER HOSE:** Versatile general purpose hose. The synthetic rubber tube and cover resists heat, sunlight, ozone, and weathering. Temperature range -40° F to +212° F.



### ADD BEND RESTRICTOR

Designed to limit the degree of bending without compromising the integrity of the hose assembly while also preventing the hose-end from kinking, excessive wearing, and tearing. Available for low pressure models



### UPGRADE TO STAINLESS STEEL SWIVEL

Based on the upgraded medium pressure swivel, the stainless steel swivel is machined from solid 316 stainless steel and features increased wall thicknesses with upgraded seals and backup rings.



**WARNING:** Cancer and reproductive Harm – See page 19 for more information – [www.P65Warning.ca.gov](http://www.P65Warning.ca.gov)



1/4" - 3/4" I.D.

# EZ-T SERIES

## SUPREME DUTY HOSE REELS



Triple axle support with a full frame & Super Hub™

**COXREELS® EZ-T Series "Truck Mount" spring driven hose reels are the toughest hose reels in the spring driven line.** The extra large chassis with dual pedestal-style arms and Coxreels' Super Hub™ provides triple axle support while reducing vibration and strengthening the structural integrity of the reel. This series is ideal for off-road applications that demand reliability in the most abusive and demanding environments.

### EZ-T SERIES

Do not exceed listed hose O.D. to obtain maximum length.

HOSE						LESS HOSE		SIZE INDEX
MODEL	I.D.	O.D.	FT.	PSI	APRX. LBS.	MODEL	APRX. LBS.	
<b>LOW PRESSURE</b> Models with hose are for air water service with a maximum temperature 150°F. Models less hose can be used for air, water or oil.								
<b>EZ-TSH-350</b>	3/8"	5/8"	50	300	61	<b>EZ-TSHL-N-350</b>	55	<b>1</b>
<b>EZ-TSH-375</b>	3/8"	5/8"	75	300	82	<b>EZ-TSHL-N-375</b>	73	<b>2</b>
<b>EZ-TSH-3100</b>	3/8"	5/8"	100	300	85	<b>EZ-TSHL-N-3100</b>	74	<b>2</b>
<b>EZ-TSH-450</b>	1/2"	3/4"	50	300	63	<b>EZ-TSHL-N-450</b>	55	<b>1</b>
<b>EZ-TSH-475</b>	1/2"	3/4"	75	300	82	<b>EZ-TSHL-N-475</b>	71	<b>2</b>
<b>EZ-TSH-4100</b>	1/2"	3/4"	100	300	95	<b>EZ-TSHL-N-4100</b>	80	<b>2</b>
<b>EZ-TSH-535</b>	3/4"	1 1/16"	35	300	77	<b>EZ-TSHL-N-535</b>	67	<b>3</b>
<b>EZ-TSH-550</b>	3/4"	1 1/16"	50	300	83	<b>EZ-TSHL-N-550</b>	70	<b>3</b>
<b>MEDIUM PRESSURE</b> Reels are furnished with standard one wire braid hose suitable for air, water or oil applications. Hose exceeds SAE R1 specifications. Maximum Temperature 250°F.								
<b>EZ-TMP-350</b>	3/8"	1 1/16"	50	3,000	74	<b>EZ-TMPL-N-350</b>	61	<b>1</b>
<b>EZ-TMP-375</b>	3/8"	1 1/16"	75	3,000	99	<b>EZ-TMPL-N-375</b>	80	<b>2</b>
<b>EZ-TMP-450</b>	1/2"	1 3/16"	50	2,500	77	<b>EZ-TMPL-N-450</b>	64	<b>1</b>
<b>EZ-TMP-475</b>	1/2"	1 3/16"	75	2,500	100	<b>EZ-TMPL-N-475</b>	80	<b>2</b>
<b>EZ-TMP-550</b>	3/4"	1 1/16"	50	1,500	94	<b>EZ-TMPL-N-550</b>	74	<b>3</b>
<b>HIGH PRESSURE</b> Reels are furnished standard with S.A.E. 100R16 #1 or #2 wire braid hose suitable for grease and hydraulic oil applications. Maximum Temperature 250°F.								
<b>EZ-THP-150</b>	1/4"	9/16"	50	5,000	74	<b>EZ-THPL-N-150</b>	62	<b>1</b>
<b>EZ-THP-175</b>	1/4"	9/16"	75	5,000	88	<b>EZ-THPL-N-175</b>	71	<b>2</b>
<b>EZ-THP-1100</b>	1/4"	9/16"	100	5,000	104	<b>EZ-THPL-N-1100</b>	82	<b>2</b>
<b>EZ-THP-350</b>	3/8"	1 1/16"	50	4,000	78	<b>EZ-THPL-N-350</b>	66	<b>1</b>
<b>EZ-THP-375</b>	3/8"	1 1/16"	75	4,000	98	<b>EZ-THPL-N-375</b>	80	<b>2</b>

### EZ-T SERIES :: REEL SPECIFICATIONS

#### SWIVEL

- External fluid path with machined from solid brass 90° full-flow NPT swivel inlet (Zinc plated steel swivel on HP models)
- Swivel Seals: NITRILE

#### DESIGN & STRUCTURE

- Sturdy, dual pedestal reel features Coxreels' exclusive Super Hub™ triple axle support system
- Built for rugged mobile applications
- Guide arm adjusts to wall, floor, vehicle, & overhead positions
- Stainless Steel rollers on 3/4" models
- Solid one piece, heavy gauge 1/4" steel base & support posts for maximum strength
- 1" solid steel axle & lubricated precision bearings for smooth rotation

#### EZ-COIL RETRACTION

- OUR PATENTED SAFETY SYSTEM THAT RETRACTS UP TO 80% SLOWER THAN CONVENTIONAL SPRING DRIVEN REELS
- Enclosed factory tuned & matched cartridge-style spring motor
- Non-corrosive, stainless steel spring, pawl, & zinc plated ratchet
- Multi-position lock ratchet mechanism secures hose at desired length

### REEL DIMENSIONS

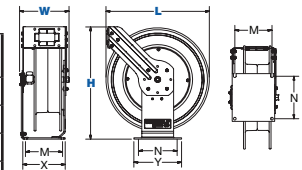
Technical Data Sheets Available On Website

SIZE INDEX	W	H	L	X	Y	M	N
<b>1</b>	9 3/8"	21 1/4"	19 1/2"	8"	9"	7"	8"
<b>2</b>	9 3/8"	25 1/2"	24"	8"	9"	7"	8"
<b>3</b>	9 7/8"	25 1/2"	24"	8"	9"	7"	8"

Overall Dimensions

Base

Mounting Pattern



### TOP REQUESTED UPGRADES & ACCESSORIES

SEE PAGE 17 FOR ADDITIONAL ACCESSORIES

#### UPGRADE TO NITRILE OR RUBBER HOSE

**NITRILE HOSE:** Premium high quality, oil resistant, multi-purpose hose. The high tensile spiral synthetic yarn reinforcement provides excellent kink resistance. Temperature range: -20° F to +212° F.

**SYNTHETIC RUBBER HOSE:** Versatile general purpose hose. The synthetic rubber tube and cover resists heat, sunlight, ozone, and weathering. Temperature range -40° F to +212° F.

#### UPGRADE TO STAINLESS STEEL SWIVEL

Based on the upgraded medium pressure swivel, the stainless steel swivel is machined from solid 316 stainless steel and features increased wall thicknesses with upgraded seals and backup rings.

#### UPGRADE TO SOLID ROLLERS

Heavy duty machined from solid plastic rollers. Only for T Series models 3/8" and 1/2".

#### ADD AIR TOOL KIT

**BEND RESTRICTOR:** Designed to limit the degree of bending without compromising the integrity of the hose assembly while also preventing the hose-end from kinking, excessive wearing, and tearing. Available for low pressure models.

**QUICK DISCONNECT:** Quick disconnect couplings tread onto end of hose fitting to provide fast, leak-proof connections for low pressure hose lines.

#### ADD BEND RESTRICTOR

Designed to limit the degree of bending without compromising the integrity of the hose assembly while also preventing the hose-end from kinking, excessive wearing, and tearing. Available for low pressure models.



WARNING: Cancer and reproductive Harm – See page 19 for more information – [www.P65Warning.ca.gov](http://www.P65Warning.ca.gov)



**COXREELS® EZ-EN Series** "Enclosed" spring driven hose reels are protected by a powder coated steel casing that shields out the elements to protect and extend the life of the reel, the hose, and the components inside. This series adds a neat, tidy, aesthetic appearance to work environments that demand a clean and professional look. The three piece casing is easy to assemble and disassemble for simple installation and maintenance.

## EZ-EN SERIES

Do not exceed listed hose O.D. to obtain maximum length.

HOSE						LESS HOSE		SIZE INDEX
MODEL	I.D.	O.D.	FT.	PSI	APRX. LBS.	MODEL	APRX. LBS.	
<b>LOW PRESSURE</b> Models with hose are for air water service with a maximum temperature 150°F. Models less hose can be used for air, water or oil.								
<b>EZ-EN-325</b>	3/8"	5/8"	25	300	49	<b>ENL-N-325</b>	46	<b>1</b>
<b>EZ-EN-350</b>	3/8"	5/8"	50	300	65	<b>ENL-N-350</b>	58	<b>2</b>
<b>EZ-EN-425</b>	1/2"	3/4"	25	300	63	<b>ENL-N-425</b>	58	<b>1</b>
<b>EZ-EN-450</b>	1/2"	3/4"	50	300	69	<b>ENL-N-450</b>	64	<b>2</b>
<b>MEDIUM PRESSURE</b> Reels are furnished with standard one wire braid hose suitable for air, water or oil applications. Hose exceeds SAE R1 specifications. Maximum Temperature 250°F.								
<b>EZ-ENM-325</b>	3/8"	1 1/16"	25	3,000	61	<b>ENML-N-325</b>	54	<b>1</b>
<b>EZ-ENM-350</b>	3/8"	1 1/16"	50	3,000	80	<b>ENML-N-350</b>	68	<b>2</b>
<b>EZ-ENM-425</b>	1/2"	1 3/16"	25	2,500	61	<b>ENML-N-425</b>	54	<b>1</b>
<b>EZ-ENM-450</b>	1/2"	1 3/16"	50	2,500	82	<b>ENML-N-450</b>	68	<b>2</b>
<b>HIGH PRESSURE</b> Reels are furnished standard with S.A.E. 100R16 #1 or #2 wire braid hose suitable for grease and hydraulic oil applications. Maximum Temperature 250°F.								
<b>EZ-ENH-125</b>	1/4"	9/16"	25	5,000	60	<b>ENHL-N-125</b>	54	<b>1</b>
<b>EZ-ENH-150</b>	1/4"	9/16"	50	5,000	79	<b>ENHL-N-150</b>	68	<b>2</b>
<b>EZ-ENH-350</b>	3/8"	1 1/16"	50	4,000	80	<b>ENHL-N-350</b>	68	<b>2</b>



### EZ-EN SERIES :: REEL SPECIFICATIONS

#### SWIVEL

- Machined from solid brass 90° full-flow NPT swivel inlet (Zinc plated steel swivel on HP models)

- Swivel Seals: NITRILE

#### DESIGN & STRUCTURE

- Sturdy, enclosed reel for aesthetic purposes & greater hose protection
- Models with size index #2 feature Coxreels' exclusive Super Hub™ dual axle support system
- Solid, one piece, heavy gauge 1/4" steel base & support post for maximum stability
- 1" solid steel axle & lubricated precision bearings for smooth rotation
- Heavy gauge steel 3-piece casing with adjustable hose roller guide

#### EZ-COIL RETRACTION

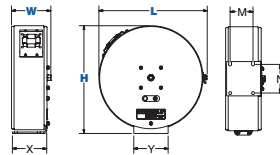
- OUR PATENTED SAFETY SYSTEM THAT RETRACTS UP TO 80% SLOWER THAN CONVENTIONAL SPRING DRIVEN REELS
- Enclosed factory tuned & matched cartridge-style spring motor
- Non corrosive, stainless steel spring, pawl, & zinc plated ratchet
- Multi-position lock ratchet mechanism secures hose at desired length

### REEL DIMENSIONS

Technical Data Sheets Available On Website

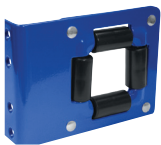
SIZE INDEX	W	H	L	X	Y	M	N
<b>1</b>	6 7/8"	18 7/8"	19"	6"	6"	4"	5"
<b>2</b>	8 1/2"	21 3/4"	21 7/8"	6"	6"	4"	5"

Overall Dimensions      Base      Mounting Pattern



### TOP REQUESTED UPGRADES & ACCESSORIES

SEE PAGE 17 FOR ADDITIONAL ACCESSORIES



#### UPGRADE TO SOLID ROLLERS

Heavy duty machined from solid plastic rollers. Only for T Series models 3/8" and 1/2".

#### UPGRADE TO NITRILE OR RUBBER HOSE

**NITRILE HOSE:** Premium high quality, oil resistant, multi-purpose hose. The high tensile spiral synthetic yarn reinforcement provides excellent kink resistance. Temperature range: -20° F to +212° F.

**SYNTHETIC RUBBER HOSE:** Versatile general purpose hose. The synthetic rubber tube and cover resists heat, sunlight, ozone, and weathering. Temperature range -40° F to +212° F.

#### UPGRADE TO STAINLESS STEEL SWIVEL

Based on the upgraded medium pressure swivel, the stainless steel swivel is machined from solid 316 stainless steel and features increased wall thicknesses with upgraded seals and backup rings.



#### ADD AIR TOOL KIT

**BEND RESTRICTOR:** Designed to limit the degree of bending without compromising the integrity of the hose assembly while also preventing the hose-end from kinking, excessive wearing, and tearing. Available for low pressure models.

**QUICK DISCONNECT:** Quick disconnect couplings tread onto end of hose fitting to provide fast, leak-proof connections for low pressure hose lines.



#### ADD BEND RESTRICTOR

Designed to limit the degree of bending without compromising the integrity of the hose assembly while also preventing the hose-end from kinking, excessive wearing, and tearing. Available for low pressure models.



**WARNING:** Cancer and reproductive Harm – See page 19 for more information – [www.P65Warning.ca.gov](http://www.P65Warning.ca.gov)



3/8" - 1/2" I.D.

# HV SAFETY HOSE SERIES



**COXREELS® HV "High Visibility" Safety Hose Series powers up the safety of your reel.** The HV Hose will add awareness and visibility to your hose creating the safest environment possible. To maximize your safety to the highest level, add EZ-Coil controlled retraction to your Coxreels. Featured on P, SH, and T Series on 3/8" or 1/2" hose.

## HIGH VISIBILITY SAFETY HOSE SERIES

HOSE						DIMENSIONS							
MODEL	I.D.	O.D.	FT.	PSI	APRX. LBS.	W	H	L	X	Y	M	N	
<b>P SERIES</b>						Models with hose are for air water service with a maximum temperature 150°F. Models less hose can be used for air, water or oil.							
<b>EZ-P-LP-325-HV</b>	3/8"	5/8"	25	300	28	6 1/2"	14 7/8"	13 1/2"	5"	6"	3"	5"	
<b>EZ-P-LP-350-HV</b>	3/8"	5/8"	50	300	43	6 3/4"	18 5/8"	17 1/8"	6"	6"	4"	5"	
<b>EZ-P-LP-450-HV</b>	1/2"	3/4"	50	300	48	7"	18 5/8"	17 1/8"	6"	6"	4"	5"	
<b>SH SERIES</b>						Models with hose are for air water service with a maximum temperature 150°F. Models less hose can be used for air, water or oil.							
<b>EZ-SH-350-HV</b>	3/8"	5/8"	50	300	50	8 1/2"	21 1/4"	19 1/2"	6"	6"	4"	5"	
<b>EZ-SH-375-HV</b>	3/8"	5/8"	75	300	68	8 1/4"	25 1/2"	24"	6"	6"	4"	5"	
<b>EZ-SH-3100-HV</b>	3/8"	5/8"	100	300	71	8 1/4"	25 1/2"	24"	6"	6"	4"	5"	
<b>EZ-SH-450-HV</b>	1/2"	3/4"	50	300	54	8 1/4"	21 1/4"	19 1/2"	6"	6"	4"	5"	
<b>EZ-SH-475-HV</b>	1/2"	3/4"	75	300	68	8 3/4"	25 1/2"	24"	6"	6"	4"	5"	
<b>EZ-SH-4100-HV</b>	1/2"	3/4"	100	300	81	8 3/4"	25 1/2"	24"	6"	6"	4"	5"	
<b>T SERIES</b>						Models with hose are for air water service with a maximum temperature 150°F. Models less hose can be used for air, water or oil.							
<b>EZ-TSH-350-HV</b>	3/8"	5/8"	50	300	61	9 3/8"	21 1/4"	19 1/2"	8"	9"	7"	8"	
<b>EZ-TSH-375-HV</b>	3/8"	5/8"	75	300	82	9 3/8"	25 1/2"	24"	8"	9"	7"	8"	
<b>EZ-TSH-3100-HV</b>	3/8"	5/8"	100	300	85	9 3/8"	25 1/2"	24"	8"	9"	7"	8"	
<b>EZ-TSH-450-HV</b>	1/2"	3/4"	50	300	63	9 3/8"	21 1/4"	19 1/2"	8"	9"	7"	8"	
<b>EZ-TSH-475-HV</b>	1/2"	3/4"	75	300	82	9 3/8"	25 1/2"	24"	8"	9"	7"	8"	
<b>EZ-TSH-4100-HV</b>	1/2"	3/4"	100	300	95	9 3/8"	25 1/2"	24"	8"	9"	7"	8"	

### HV SAFETY HOSE SERIES :: REEL SPECIFICATIONS

#### SWIVEL

- External fluid path with machined from solid brass 90° full-flow NPT swivel
- Swivel Seals: NITRILE

#### HOSE

- Hybrid (PVC + Rubber) bright yellow hose with a white glossy stripe.
- Superior visibility, increased hose flexibility, enhanced kink resistance and reduced coil memory.
- Temperature range: -40°F to 158°F (-40°C to 70°C)
- 300 PSI at 70°F

#### DESIGN & STRUCTURE

- Each of these reels is built of their standard series with their own unique features & benefits

#### EZ-COIL RETRACTION

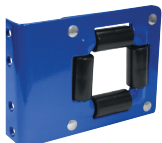
- OUR PATENTED SAFETY SYSTEM THAT RETRACTS UP TO 80% SLOWER THAN CONVENTIONAL SPRING DRIVEN REELS
- Enclosed factory tuned & matched cartridge-style spring motor
- Non-corrosive, stainless steel spring, pawl, & zinc plated ratchet
- Multi-position lock ratchet mechanism secures hose at desired length

SPRING DRIVEN

EZ-COIL®

### TOP REQUESTED UPGRADES & ACCESSORIES

SEE PAGE 17 FOR ADDITIONAL ACCESSORIES



#### UPGRADE TO SOLID ROLLERS

Heavy duty machined from solid plastic rollers. Only for T Series models 3/8" and 1/2".



#### ADD AIR TOOL KIT

**BEND RESTRICTOR:** Designed to limit the degree of bending without compromising the integrity of the hose assembly while also preventing the hose-end from kinking, excessive wearing, and tearing. Available for low pressure models.

**QUICK DISCONNECT:** Quick disconnect couplings tread onto end of hose fitting to provide fast, leak-proof connections for low pressure hose lines.



#### UPGRADE TO STAINLESS STEEL SWIVEL

Based on the upgraded medium pressure swivel, the stainless steel swivel is machined from solid 316 stainless steel and features increased wall thicknesses with upgraded seals and backup rings.



#### ADD BEND RESTRICTOR

Designed to limit the degree of bending without compromising the integrity of the hose assembly while also preventing the hose-end from kinking, excessive wearing, and tearing. Available for low pressure models

**!** WARNING: Cancer and reproductive Harm – See page 19 for more information – [www.P65Warning.ca.gov](http://www.P65Warning.ca.gov)

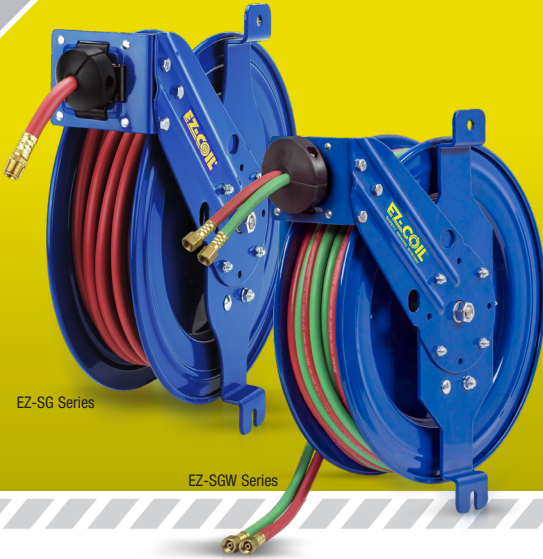






# EZ-SG & EZ-SGW SERIES

## SIDE MOUNT HOSE REELS WITH GUIDE ARM



**COXREELS® EZ-SG & EZ-SGW Series** expand the capabilities of the "Side Mount" spring driven hose reels, adding a multi-position guide arm for maximum and convenient hose control. Ideal for tight spaces, the versatile EZ-SG Series (for air/water, oil and grease) and EZ-SGW Series (for oxy-acetylene and T Grade gas welding hose) features a simple two-bolt mounting pattern for easy installation and detachment on any vertical flat surface. Common applications include service vehicles, tool benches, vertical walls and beams, vehicle lift systems, machine tools, and many more. The guide arm and roller assembly are easily moved to one of the six different positions with a standard 1/2" wrench.

### EZ-SG SERIES

Do not exceed listed hose O.D. to obtain maximum length.

HOSE					LESS HOSE		SIZE INDEX	
MODEL	I.D.	O.D.	FT.	PSI	APRX. LBS.	MODEL		APRX. LBS.
<b>LOW PRESSURE</b>					Models with hose are for air water service with a maximum temperature 150°F. Models less hose can be used for air, water or oil			
<b>EZ-SG13-L125</b>	1/4"	1/2"	25	300	25	<b>EZ-SG13L-L125</b>	22	<b>1</b>
<b>EZ-SG13-L135</b>	1/4"	1/2"	35	300	26	<b>EZ-SG13L-L135</b>	23	<b>1</b>
<b>EZ-SG13-L325</b>	3/8"	5/8"	25	300	26	<b>EZ-SG13L-L325</b>	23	<b>2</b>
<b>EZ-SG17-L350</b>	3/8"	5/8"	50	300	40	<b>EZ-SG17L-L350</b>	33	<b>3</b>
<b>EZ-SG17-L430</b>	1/2"	3/4"	30	300	42	<b>EZ-SG17L-L430</b>	37	<b>3</b>
<b>EZ-SG19-L450</b>	1/2"	3/4"	50	300	52	<b>EZ-SG19L-L450</b>	44	<b>5</b>
<b>MEDIUM PRESSURE</b>					Reels are furnished with standard one wire braid hose suitable for air, water or oil applications. Hose exceeds SAE R1 specifications. Maximum Temperature 250°F.			
<b>EZ-SG17-M325</b>	3/8"	1 1/16"	25	3,000	46	<b>EZ-SG17L-M325</b>	39	<b>3</b>
<b>EZ-SG19-M350</b>	3/8"	1 1/16"	50	3,000	63	<b>EZ-SG19L-M350</b>	51	<b>5</b>
<b>EZ-SG17-M425</b>	1/2"	1 3/16"	25	2,500	46	<b>EZ-SG17L-M425</b>	39	<b>4</b>
<b>EZ-SG19-M450</b>	1/2"	1 3/16"	50	2,500	65	<b>EZ-SG19L-M450</b>	51	<b>6</b>
<b>HIGH PRESSURE</b>					Reels are furnished standard with S.A.E. 100R16 #1 or #2 wire braid hose suitable for grease and hydraulic oil applications. Maximum Temperature 250°F.			
<b>EZ-SG17-H125</b>	1/4"	9/16"	25	5,000	45	<b>SG17L-H125</b>	39	<b>4</b>
<b>EZ-SG19-H150</b>	1/4"	9/16"	50	5,000	62	<b>SG19L-H150</b>	51	<b>7</b>
<b>EZ-SG17-H325</b>	3/8"	1 1/16"	25	4,000	46	<b>SG17L-H325</b>	39	<b>4</b>
<b>EZ-SG19-H350</b>	3/8"	1 1/16"	50	4,000	63	<b>SG19L-H350</b>	51	<b>8</b>

### EZ-SG SERIES :: REEL SPECIFICATIONS

#### SWIVEL

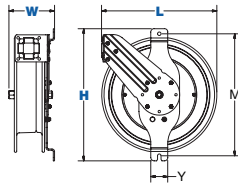
- External fluid path with machined from solid brass 90° full-flow NPT swivel inlet (Zinc plated steel swivel on HP models)
- Swivel Seals: NITRILE
- External fluid path with 90° full-flow dual ported brass swivel offering both connections from the same side of the reel (On EZ-SGW Models)
- Swivel Seals: VITON® (On EZ-SGW Models)

#### DESIGN & STRUCTURE

- Side mount design for vertical flat surface, cabinet, or enclosed space mounts
- Adjustable, six position guide arm & roller assembly provide maximum hose control
- 2-bolt mounting pattern easily mounts & detaches for temporary or permanent installation
- Solid, one piece, 3/16" steel arm base for maximum stability
- 1" solid steel axle & lubricated precision bearings for smooth rotation

#### EZ-COIL RETRACTION

- OUR PATENTED SAFETY SYSTEM THAT RETRACTS UP TO 80% SLOWER THAN CONVENTIONAL SPRING DRIVEN REELS**
- Enclosed factory tuned & matched cartridge-style spring motor
- Non corrosive, stainless steel spring, pawl, & zinc plated ratchet
- Multi-position lock ratchet mechanism secures hose at desired length.
- Non-locking, less ratchet option available (add suffix **-BXC**)



### EZ-SGW SERIES

Do not exceed listed hose O.D. to obtain maximum length.

HOSE					LESS HOSE		SIZE INDEX
MODEL	I.D.	FT.	PSI	APRX. LBS.	MODEL	APRX. LBS.	
<b>OXYGEN-ACETYLENE</b>					Oxy-Acetylene is twin-siamese type meeting R.M.A. and C.G.A. type V.D. grade R specifications. Use of other types of hose is not recommended.		
<b>EZ-SG17W-150</b>	1/4"	50	200	59	<b>EZ-SG17WL-150</b>	47	<b>9</b>
<b>EZ-SG19W-175</b>	1/4"	75	200	77	<b>EZ-SG19WL-175</b>	60	<b>10</b>
<b>OTHER FUELS</b>					Reels with "T Grade" hoses are used for a wide variety of gases, such as MAPP, propane, natural and fuel.		
<b>EZ-SG17WT-150</b>	1/4"	50	200	59	<b>EZ-SG17WTL-150</b>	47	<b>9</b>
<b>EZ-SG19WT-175</b>	1/4"	75	200	77	<b>EZ-SG19WTL-175</b>	60	<b>10</b>

### REEL DIMENSIONS

Technical Data Sheets Available On Website

SIZE INDEX	W	H	L	Y	M
<b>1</b>	6 1/4"	15 1/2"	13 1/2"	2 1/2"	14"
<b>2</b>	6 3/4"	15 1/2"	13 1/2"	2 1/2"	14"
<b>3</b>	6 3/4"	19 1/2"	17"	2 1/2"	18"
<b>4</b>	7 1/4"	19 1/2"	17"	2 1/2"	18"
<b>5</b>	8 1/2"	22"	19 1/2"	2 7/8"	20 1/2"
<b>6</b>	9 3/8"	22"	19 1/2"	2 7/8"	20 1/2"
<b>7</b>	9"	22"	19 1/2"	2 7/8"	20 1/2"
<b>8</b>	9 1/2"	22"	19 1/2"	2 7/8"	20 1/2"
<b>9</b>	8 7/8"	19 1/2"	17"	2 1/2"	18"
<b>10</b>	10 1/2"	22"	19 1/2"	2 1/2"	20 1/2"

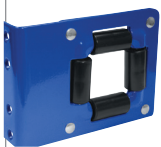
Overall Dimensions

Base

Mounting Pattern

### TOP REQUESTED UPGRADES & ACCESSORIES

SEE PAGE 17 FOR ADDITIONAL ACCESSORIES



#### UPGRADE TO SOLID ROLLERS

Heavy duty machined from solid plastic rollers. Only for T Series models 3/8" and 1/2".



**WARNING:** Cancer and reproductive Harm – See page 19 for more information – [www.P65Warning.ca.gov](http://www.P65Warning.ca.gov)







# EZ-PC SERIES POWER CORD REELS



**COXREELS® EZ-PC Series** spring driven "Power Cord" reels are heavy duty, industrial grade power sources. They replace tangled extension cords and self-retract to increase safety, productivity, and efficiency. Modeled after the EZ-P and EZ-SH Series, the EZ-PC Series are designed for long-lasting, hassle-free performance even under the most demanding conditions.

## PC SERIES



		CORD							SIZE INDEX
MODEL	ACCESSORY	INLET OUTLET	AWG / NO COND.	CORD FT.	TYPE	VOLTS	AMPS	APRX. LBS.	
<b>FOR INDOOR USE ONLY!</b> All models rated at 115 volts, 60 hz single phase only.									
<b>EZ-PC13-5016-A†</b>	Single Industrial Receptacle†		16 / 3	50	SJO	115	13	36	<b>1</b>
<b>EZ-PC24-0016-A†</b>			16 / 3	100	SJO	115	13	73	<b>2</b>
<b>EZ-PC13-5012-A†</b>	Single Industrial Receptacle†		12 / 3	50	SJO	115	20	40	<b>1</b>
<b>EZ-PC24-0012-A†</b>			12 / 3	100	SJO	115	20	81	<b>2</b>
<b>EZ-PC13-5012-B†</b>	Quad "4 Plug" Industrial Receptacle†		12 / 3	50	SJO	115	20	41	<b>1</b>
<b>EZ-PC24-0012-B†</b>			12 / 3	100	SJO	115	20	84	<b>2</b>
<b>EZ-PC13-5016-F†</b>	Duplex G.F.C.I. Metal Industrial Receptacle†		16 / 3	50	SJO	115	13	38	<b>1</b>
<b>EZ-PC24-0016-F†</b>			16 / 3	100	SJO	115	13	73	<b>2</b>
<b>EZ-PC13-5012-F†</b>			12 / 3	50	SJO	115	20	42	<b>1</b>
<b>EZ-PC24-0012-F†</b>			12 / 3	100	SJO	115	20	83	<b>2</b>
<b>EZ-PC24-0016-X</b>	With Cord, Less Accessory		16 / 3	100**	SJO	115	13	71	<b>2</b>
<b>EZ-PC13-5012-X††</b>			12 / 3	50**	SJO	115	20	40	<b>1</b>
<b>EZ-PC24-0012-X</b>			12 / 3	100**	SJO	115	20	81	<b>2</b>
<b>EZ-PC13-5012-4</b>	With Cord, Less Accessory		12 / 4	50	SJO	115	20	40	<b>1</b>
<b>EZ-PC13L-5016††</b>	Less Cord, Less Accessory		16 / 3	50*	SJO	115	25	31	<b>1</b>
<b>EZ-PC24L-0016</b>			16 / 3	100	SJO	115	25	62	<b>2</b>
<b>EZ-PC13L-5012††</b>			12 / 3	50	SJO	115	25	29	<b>1</b>
<b>EZ-PC24L-0012</b>			12 / 3	100	SJO	115	25	64	<b>2</b>

\*\*When not using specified cord type capacity may vary.

## REEL DIMENSIONS

Technical Data Sheets Available On Website

SIZE INDEX	W	H	L	X	Y	M	N
<b>1</b>	8 1/2"	14 7/8"	13 1/2"	5"	6"	3"	5"
<b>2</b>	10 1/4"	25 1/2"	24"	6"	6"	4"	5"

Overall Dimensions Base Mounting Pattern



### END USER CAUTION STATEMENTS

- Cord AWG, length, insulation rating, as well as single or multi-phase electrical service must be considered in determining the power rating for each reel. End use application must not exceed the lowest rated component (reel or cord). End user is responsible for determining and ensuring compliance to national and local codes as required.
- Disconnect power source from reel while unspooling / spooling cord.
- Cord should be completely unspooled from the reel when energized. Otherwise follow NEC ampacity derating factors in 310.15(B)(3)(a) where "# current carrying conductors in the service cord" X "#cord layers on the reel" = "# current carrying conductors" in a raceway. Apply the appropriate derating factor to the cord ampacity listed in 310.15(B)(16).

## TOP REQUESTED UPGRADES & ACCESSORIES

SEE PAGE 17 FOR ADDITIONAL ACCESSORIES



### ORDER LIGHT MODELS

- E SUFFIX: Caged drop light with tool tap plug.
- H SUFFIX: Industrial duty LED light 6X 3W HO
- K SUFFIX: Industrial duty LED light 12X 1W SMD
- M SUFFIX: Industrial duty LED light 8W COB



WARNING: Cancer and reproductive Harm – See page 19 for more information – www.P65Warning.ca.gov



**COXREELS® EZ-SD** "Static Discharge" cable reels are built heavy duty and designed for long lasting performance. They are specifically design to be used in combustible environments where the static buildup could ignite a spark and subsequent explosion. Static discharge or grounding reels are commonly paired with fuel hose reels found on page 16.

## EZ-SD SERIES

CABLE				LESS CABLE		SIZE INDEX
MODEL	FT.	O.D.	APRX. LBS.	MODEL	APRX. LBS.	
<b>GALVANIZED CABLE</b>						
<b>EZ-SD-35</b>	35	5/32"	18	-	-	<b>1</b>
<b>EZ-SD-50</b>	50	5/32"	20	<b>EZ-SDL-50</b>	18	<b>1</b>
<b>EZ-SD-75</b>	75	5/32"	31	-	-	<b>2</b>
<b>EZ-SD-100</b>	100	5/32"	32	<b>EZ-SDL-100</b>	28	<b>2</b>
<b>STAINLESS STEEL CABLE</b>						
<b>EZ-SD-35-1</b>	35	5/32"	18	-	-	<b>1</b>
<b>EZ-SD-50-1</b>	50	5/32"	20	<b>EZ-SDL-50</b>	18	<b>1</b>
<b>EZ-SD-75-1</b>	75	5/32"	31	-	-	<b>2</b>
<b>EZ-SD-100-1</b>	100	5/32"	32	<b>EZ-SDL-100</b>	28	<b>2</b>

## REEL DIMENSIONS

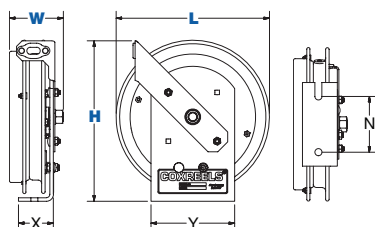
Technical Data Sheets Available On Website

SIZE INDEX	W	H	L	X	Y	N
<b>1</b>	37/8"	11 1/2"	11"	2 1/2"	6"	4"
<b>2</b>	4"	15"	14 1/2"	2 1/2"	6"	4"

Overall Dimensions

Base

Mounting Pattern



## EZ-SD SERIES :: REEL SPECIFICATIONS

### STATIC DISCHARGE

- Available with 7 strand x 7 wire galvanized steel or stainless steel cable
- High visibility, orange, vinyl cable cover
- Includes cable, ball stop & 50 Amp grounding clamp (100 Amp copper grounding clamp available, consult factory)

### DESIGN & STRUCTURE

- Compact static discharge cable reel available in spring rewind or direct hand crank retraction
- Commonly paired with fuel reels & used in combustible environment for grounding purposes
- Guide arm adjusts to wall, floor, vehicle, & overhead positions
- Solid one piece, heavy gauge 1/4" steel base for maximum stability
- 1" solid steel axle & lubricated precision bearings for smooth rotation
- Bottom of base is un-powder coated to ground reel

### EZ-COIL RETRACTION

- **OUR PATENTED SAFETY SYSTEM THAT RETRACTS UP TO 80% SLOWER THAN CONVENTIONAL SPRING DRIVEN REELS**
- Enclosed factory tuned & matched cartridge-style spring motor
- Non corrosive, stainless steel spring, pawl, & zinc plated ratchet
- Multi-position non-sparking lock ratchet mechanism secures cable at desired length

## TOP REQUESTED UPGRADES & ACCESSORIES

SEE PAGE 17 FOR ADDITIONAL ACCESSORIES



### ORDER 100 AMP CLAMP

Heavy duty copper clamp designed for heavy grounding requirements. It has a jaw opening of 1.06" and a steel spring.



### ORDER DOUBLE CLAMP

Heavy duty clamps made from zinc plated steel. Both clamps are rated for 50 amp. Each has a jaw opening of 1.06" and a steel spring.



**WARNING:** Cancer and reproductive Harm – See page 19 for more information – [www.P65Warning.ca.gov](http://www.P65Warning.ca.gov)



1/2" - 3/4" I.D.

# EZ-DEF SERIES & EZ-FUELING REELS SPRING DRIVEN FUEL HOSE REELS

**COXREELS® EZ-DEF Series** are equipped with a stainless steel, external full-flow swivel and chemical resistant Viton® seals to provide a safe, reliable Diesel Exhaust Fluid (DEF) dispensing solution. The swivel is easy to access for simple seal maintenance and fast DEF dispenser hose installation. Coxreels® professional DEF reeling systems are available in heavy-duty single pedestal (EZ-SH Series) or supreme-duty dual pedestal (EZ-T Series) configurations. Both versatile designs are outfitted with Coxreels' original Super Hub™ dual axle support systems to increase stability and reduce vibration during operation, making these reels the perfect DEF handling solutions for either stationary or rugged mobile applications.

## EZ-DEF SERIES

Models are equipped with DEF hose. **Note: Do not exceed listed hose O.D. to obtain maximum length.**

HOSE						LESS HOSE		SIZE INDEX
MODEL	I.D.	O.D.	FT.	PSI	APRX. LBS.	MODEL	APRX. LBS.	
<b>DEF-SH SERIES</b>								
-	1/2"	7/8"	50	300	-	<b>EZ-SHL-N-450-BBX</b>	46	<b>1</b>
<b>EZ-SH-525-DF-BBX</b>	3/4"	1 1/16"	25	300	52	-	-	<b>2</b>
<b>EZ-SH-550-DF-BBX</b>	3/4"	1 1/16"	50	300	69	-	-	<b>3</b>
<b>DEF-T SERIES</b>								
-	1/2"	3/4"	50	300	-	<b>EZ-TSHL-N-450-BBX</b>	55	<b>4</b>
-	3/4"	1 1/16"	35	300	-	<b>EZ-TSHL-N-535-DEF-BBX</b>	67	<b>5</b>
<b>EZ-TSH-550-DF-BBX</b>	3/4"	1 1/16"	50	300	83	<b>EZ-TSHL-N-550-DEF-BBX</b>	-	<b>5</b>

**COXREELS® Fuel Dispensing Reels** are designed to handle various non-aromatic fuel applications including diesel, kerosene, fuel oil, and heating oil. Coxreels® professional fuel dispensing reels are available in heavy-duty single pedestal (SH Series), or supreme-duty dual pedestal (T Series) configurations. These fuel reels are an essential component found in utility, ground support, and bulk liquid handling transport services mounted on fuel storage & dispensing systems, fuel/lube trucks, aircraft refuelers, and tank trucks. The convenient uncoiling systems with the added hose control allow the operator to efficiently handle fuel transfers.

## EZ-FUEL HOSE SERIES

Models are equipped with fuel hose. **Note: Do not exceed listed hose O.D. to obtain maximum length.**

HOSE						LESS HOSE		SIZE INDEX
MODEL	I.D.	O.D.	FT.	PSI	APRX. LBS.	MODEL	APRX. LBS.	
<b>FUEL HOSE SH SERIES</b>								
<b>EZ-SHF-525</b>	3/4"	1 3/16"	25	300	52	<b>EZ-SHFL-525</b>	45	<b>6</b>
<b>FUEL HOSE T SERIES</b>								
<b>EZ-TSHF-535</b>	3/4"	1 3/16"	35	300	77	<b>EZ-TSHFL-535</b>	67	<b>7</b>
<b>EZ-TSHF-550</b>	3/4"	1 3/16"	50	300	83	<b>EZ-TSHFL-550</b>	70	<b>7</b>

## REEL DIMENSIONS

Technical Data Sheets Available On Website

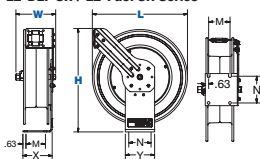
SIZE INDEX	W	H	L	X	Y	M	N
<b>1</b>	8 1/4"	21 1/4"	19 1/2"	6"	6"	4"	5"
<b>2</b>	9 3/8"	21 1/4"	19 1/2"	6"	6"	4"	5"
<b>3</b>	9 7/8"	25 1/2"	24"	6"	6"	4"	5"
<b>4</b>	9 3/8"	21 1/4"	19 1/2"	8"	9"	7"	8"
<b>5</b>	9 7/8"	25 1/2"	24"	8"	9"	7"	8"
<b>6</b>	9 3/8"	21 1/4"	19 1/2"	6"	6"	4"	5"
<b>7</b>	9 7/8"	25 1/2"	24"	8"	9"	7"	8"

Overall Dimensions

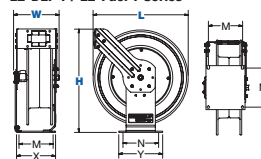
Base

Mounting Pattern

EZ-DEF SH / EZ-Fuel SH Series



EZ-DEF T / EZ-Fuel T Series



## EZ-DEF & EZ-FUELING SERIES :: REEL SPECIFICATIONS

### DEF SERIES SWIVEL

- Non-corrosive stainless steel 90° full flow NPT swivel for Diesel Exhaust Fluid (DEF) dispensing applications.
- Swivel seals: Viton®

### DEF SERIES HOSE

- DEF dispensing hose designed to convey the high-purity, aqueous urea solution DEF. Temperature Range: -40°F to +257°F

### FUEL SERIES SWIVEL

- Machined from solid brass 90° full-flow NPT swivel inlet for fuel dispensing applications. Electroless nickel plated steel swivel on 1" models
- Swivel seals: Nitrile

### FUEL SERIES HOSE

- Fuel dispensing hose designed to convey non-aromatic fuels including diesel, kerosene, fuel oil, & heating oil. Temperature Range: -20°F to +190°F

### DESIGN & STRUCTURE

- Each of these reels is built of their standard series with their own unique features & benefits

### EZ-COIL RETRACTION

- **OUR PATENTED SAFETY SYSTEM THAT RETRACTS UP TO 80% SLOWER THAN CONVENTIONAL SPRING DRIVEN REELS**
- Enclosed factory tuned & matched cartridge-style spring motor
- Non-corrosive, stainless steel spring, pawl, & zinc plated ratchet
- Multi-position lock ratchet mechanism secures hose at desired length

## TOP REQUESTED UPGRADES & ACCESSORIES

SEE PAGE 17 FOR ADDITIONAL ACCESSORIES



### UPGRADE TO SOLID ROLLERS

Heavy duty machined from solid plastic rollers. Only for T Series 1/2" models and SH Series.



WARNING: Cancer and reproductive Harm – See page 19 for more information – [www.P65Warning.ca.gov](http://www.P65Warning.ca.gov)



# ACCESSORIES

## SWIVELS & O-RING COMPATIBILITY CHART

	Brass	Zinc Plated Steel	Electroless Nickel Plated Steel	Stainless Steel	In-Line Nickel Plated Steel or Stainless Steel	Melonized Steel
<b>Available Swivel I.D.</b> Female NPT fittings ("BSP" fittings available)	1/4"	•	•		•	•
	3/8"	•	•		•	
	1/2"	•	•		•	
	3/4"	•			•	
	1"			•	•	
	1 1/2"			•	•	•
<b>Available Swivel Seals</b> (Refer to O-Ring Compatibility Chart for desired application)	Buna	•	•	•	•	
	EPDM	•	•	•	•	
	Viton®	•	•	•	•	•
	AFLAS			•	•	

## O-RING COMPATIBILITY CHART

Intended as a general guideline only. Users must test under their own operating guidelines to determine suitability. Please consult factory if your application is not listed.

1 = Recommended | 2 = Fair | 3 = Poor | 4 = Unsatisfactory

	ACETYLENE	AIR (-30°F TO +25°F)	AIR (+25°F TO 200°F)	AIR (200°F TO 300°F)	AIR (300°F TO 400°F)	ANTIFREEZE	FUEL OIL / KEROSENE	GREASE (PETROLEUM BASED)	HYDROCHLORIC ACID	MOTOR OIL (PETROLEUM BASED)	NATURAL GAS	NITROGEN	OXYGEN (200°F TO 300°F)	OXYGEN (COLD)	PESTICIDES	STEAM (BELOW 300°F)	STEAM (300°F TO 400°F)	SEWAGE	SEA WATER	WATER (UP TO 200°F)
1/4"	1	1	1	3	4	2	1	1	3	1	1	1	4	2	2	4	4	1	1	1
3/8"	1	1	1	2	4	1	4	4	2	4	4	1	4	2	4	1	2	1	1	1
1/2"	1	2	1	1	1	2	1	1	1	1	1	1	2	1	1	2	3	2	2	2
3/4"	1	3	1	1	1	1	2	1	2	1	1	1	4	2	1	2	3	1	1	1



### Brass Swivels

CNC machined from solid brass swivels are built for general multi-purpose applications. Configured in a 90 degree fluid path with full flow designed. Working pressure up to 3,000 PSI & -40°F to 400°F\*.



### Zinc Plated Steel Swivels

Machined from strong low carbon steel & configured in a 90 degree fluid path with full flow designed. Zinc plated steel swivels are recommended for non-corrosive applications. Working pressure up to 5,000 PSI & -40°F to 400°F\*.



### Electroless Nickel Plated Steel Swivels

Machined from strong low carbon steel & configured in a 90 degree fluid path with full flow designed. Nickel plated steel swivels are recommended for mildly corrosive applications. Working pressure up to 4,000 PSI & -40°F to 400°F\*.



### Stainless Steel Swivels

Machined from high quality, pure 316 stainless steel & configured in a 90 degree fluid path with full flow design. Stainless steel swivels offer superior corrosion protection. Working pressure up to 5,000 PSI & -40°F to 400°F\*.



### In-line Swivels

Nickel plated steel or stainless steel swivel configured in an in-line fluid path with full flow design. Working pressure up to 1,500 PSI for 1 1/2" I.D. & 1,000 PSI for 2" I.D. -40°F to 400°F\*.



### Melonized Steel Swivels

Configured in a 90 degree fluid path with 1/4" ports, melonized steel swivels are used for hydraulic applications. Working pressure up to 10,000 PSI & -5°F to 400°F\*.

\*Temperature rating depends on the seal type selected

## HOSE UPGRADES

### NITRILE Hose

Premium high quality, oil resistant, multi-purpose hose that is excellent for air and water service and many other chemical applications. The high tensile spiral synthetic yarn reinforcement provides excellent kink resistance. This industrial grade hose exceeds RMA Class A-High Oil Resistance requirements. Electrically non-conductive with a minimum resistance of one megaohm per inch at 1000 volts DC. Temperature Range: -20°F to +212°F.

SUFFIX	TUBE MATERIAL	COVER	REINFORCEMENT BRAIDS	I.D.	O.D.	PSI	WEIGHT (LBS/FT.)
OG	Black Nitrile	Reinforced Nitrile	Spiral Synthetic Yarn	1/4"	1/2"	300	0.12
OG	Black Nitrile	Reinforced Nitrile	Spiral Synthetic Yarn	3/8"	1 1/16"	300	0.17
OG	Black Nitrile	Reinforced Nitrile	Spiral Synthetic Yarn	1/2"	27/32"	300	0.26
OG	Black Nitrile	Reinforced Nitrile	Spiral Synthetic Yarn	3/4"	1 5/32"	300	0.39

### SYNTHETIC RUBBER-EPDM Hose

Versatile general purpose hose that is excellent for air and water service and many agricultural chemical transfer applications. The synthetic rubber tube and cover resists heat, sunlight, ozone and weathering. The high tensile spiral synthetic yarn reinforcement provides excellent kink resistance. This industrial grade hose exceeds RMA class C medium oil resistance requirements. Temperature Range: -40°F to +212°F. \*NOT SUITABLE FOR THE TRANSFER OF PETROLEUM PRODUCTS.

SUFFIX	TUBE MATERIAL	COVER	REINFORCEMENT BRAIDS	I.D.	O.D.	PSI	WEIGHT (LBS/FT.)
RH	Black Synthetic Rubber	Red Synthetic Rubber	Spiral Synthetic Yarn	1/4"	1/2"	300	0.12
RH	Black Synthetic Rubber	Red Synthetic Rubber	Spiral Synthetic Yarn	3/8"	1 1/16"	300	0.17
RH	Black Synthetic Rubber	Red Synthetic Rubber	Spiral Synthetic Yarn	1/2"	27/32"	300	0.25
RH	Black Synthetic Rubber	Red Synthetic Rubber	Spiral Synthetic Yarn	3/4"	1 5/32"	300	0.37

### HI-VIS Hose

Hi-Vis hose is hybrid (PVC + Rubber blend) bright yellow hose with a white glossy stripe that offers similar performance to rubber with the weight of PVC. It has increased hose flexibility and better low temperature behavior while maintaining strength and toughness. With enhanced kink resistance and reduced coil memory, it lays flat for a reduced trip hazard potential. This hose is perfect to be used in applications involving air and water. Temperature range: -40°F to 158°F. PSI: 300 at 70°F

SUFFIX	TUBE MATERIAL	COVER	REINFORCEMENT BRAIDS	I.D.	O.D.	PSI	WEIGHT (LBS/FT.)
HV	Yellow flexible TPE, ARPM Class B tube	High Visibility yellow flexible TPE with white stripe cover	Spiral Polyester Yarn	3/8"	5/8"	300	0.10
HV	Yellow flexible TPE, ARPM Class B tube	High Visibility yellow flexible TPE with white stripe cover	Spiral Polyester Yarn	1/2"	3/4"	300	0.10

## ADAPTORS & REDUCERS



Adaptors are used where the size of the connection device is larger than, or of an equivalent size, to the entry thread of the enclosure.

Reducers are used where the thread size of the entry device is smaller than the entry thread of the enclosure

### REDUCERS

PART NO.	END FITTING	DESCRIPTION	PSI
10780	NPT	3/8" NPT-Female x 1/4" NPT-Male	300 MAX
7541	NPT	1/2" NPT-Male x 1/4" NPT-Female	150 MAX
7545	NPT	1/2" NPT-Male x 3/8" NPT-Female	200 MAX
7845	NPT	1" NPT-Female x 1/2" NPT-Female	3,000 MAX
7845-1	NPT	1" NPT-Male x 3/4" NPT-Female	3,000 MAX
1578	NPT	1 1/2" NPT-Male x 1 1/4" NPT-Female	300 MAX

### ADAPTORS

PART NO.	END FITTING	DESCRIPTION	PSI
10781	GHT	1/2" NPT - Female x 3/4" Garden - Male	250 MAX
10782	GHT	1/2" NPT - Male x 3/4" Garden - Male	250 MAX
10783	GHT	3/4" NPT - Male x 3/4" Garden - Male	250 MAX
10784	NPT	1" NPT - Male x 1" NPT-Male	4,000 MAX
7540	NPT	1/2" NPT - Male x 3/4" NPT - Female	6,000 MAX
7540-1	NPT	1/2" NPT - Male x 1/4" NPT - Female	6,000 MAX
7765-1	NST	1" NPT - Male x 1" NST - Male	300 MAX
7765-2	NST	1 1/2" NPT - Male x 1 1/2" NST - Male	300 MAX
7817	JIC	1/2" NPT - Male x 7/16-20 (-5) JIC	4,000 MAX
7818	JIC	3/8" NPT - Male x 1/2-20 (-4) JIC	4,000 MAX
7821	BSP	1/2" -14 NPT - Male x 1/4" 19 BSP - Female	4,500 MAX
7848	NPT	1/2" -14 NPT - Male x M14 1 1/2" Female	6,000 MAX
8165	Victaulic	2" NPT - Male x Victaulic	1,000 MAX










WARNING: Cancer and reproductive Harm – See page 19 for more information – www.P65Warning.ca.gov





# ACCESSORIES

## MOUNTING & ROLLER BRACKETS

PART NO.	REEL SERIES									
	P	SH, MP & HP	T	C	EN	PC	P-W & SHW	P-WC	Alumi-Pro®	Nitro-Pro®
 <p><b>Swing Bracket</b> For vertical surface mounting (only stationary installations), allows reel to swing 180°. Powder coated crinkle black 1/4" steel. Weight: 5 lbs.</p>	<b>15720</b>	•	•			•	•	•	•	•
	<b>15725</b>			•	•					
 <p><b>Swivel Bracket</b> For horizontal surface mounting (only stationary installations), ball bearing rotation, allows reel to swivel 345°. Powder coated crinkle black heavy gauge steel. Weight: 6 lbs. NOT FOR USE IN CEILING APPLICATIONS.</p>	<b>15721</b>	•	•	•	•	•	•	•	•	
 <p><b>EZ-Up Bracket</b> Reel easily slides in &amp; out for easy overhead mounting. Use as an alternative to the #MR-1. Must be ordered with #15724 for "I" or "H" beam installations. Weight: 6.5 lbs.</p>	<b>15723</b>	•	•			•	•	•	•	
 <p><b>EZ-Up "I" or "H" Beam Adapter</b> Must be ordered with #15723. Powder coated crinkle black, all steel construction. Weight: 5 lbs.</p>	<b>15724</b>	•	•			•	•	•	•	
 <p><b>Mounting Bracket</b> For overhead mounting, fits 3" to 8 1/2" flange on "I" or "H" beam. Powder coated crinkle black 3/16" bent steel. Weight: 13 lbs.</p>	<b>MR-1</b>	•	•			•	•	•	•	
	<b>MRT-1</b>			•	•					
 <p><b>4-Way Roller Bracket</b> Heavy gauge steel, powder coated Coxreels blue (4RB) Available in stainless steel (4RB-SS). Available with solid delring rollers (4SR &amp; 4SR-SS) Weight: 1 lbs.</p>	<b>4RB</b> 1/4"-3/4"	•	•	•	•	•	•	•	•	
	<b>4RB-SS</b> 1/4"-3/4"	•	•	•	•	•	•	•	•	
	<b>4SR</b> 1/4"-3/4"	•	•	•	•	•	•	•	•	
	<b>4SR-SS</b> 1/4"-3/4"	•	•	•	•	•	•	•	•	
 <p><b>4-Way Roller Bracket</b> Heavy gauge steel, powder coated Coxreels blue with stainless steel rollers (4SRB) Available in stainless steel (4SRB-SS). Weight: 1 lbs.</p>	<b>4SRB-4</b> 1/2"	•	•	•	•	•	•	•	•	
	<b>4SRB-5</b> 3/4"	•	•							
	<b>4SRB-6</b> 1"	•								

## S SERIES MOUNTING & ROLLER BRACKETS

PART NO.	S SERIES MODELS			
	SR13 & SL13	SR15 & SL15	SR17 & SL17	SR19 & SL19
 <p><b>Dual Side Mount Bracket</b> Heavy gauge steel, powder coated crinkle black. Weight: 5 lbs.</p>	<b>15726-13</b>	•		
	<b>15726-15</b>		•	
	<b>15726-17</b>			•
	<b>15726-19</b>			
 <p><b>Single Side Mount Bracket</b> Heavy gauge steel, powder coated crinkle black. Weight: 2 lbs.</p>	<b>SMB1</b>	•	•	
	<b>SMB2</b>			•
	<b>SMB3</b>			

## PVC INLET HOSE ASSEMBLIES

PART NO.	FITTINGS	I.D.	LENGTH	PSI
<b>5150-1.5</b>	1/4" Male x Female NPT	1/4"	18"	300
<b>5153-1.5</b>	3/8" Male x Female NPT	3/8"	18"	300
<b>5154-1.5</b>	1/2" Male x Female NPT	1/2"	18"	300
<b>5155-1.5</b>	3/4" Male x Male NPT	3/4"	18"	300
<b>5224-1.5</b>	3/8" Male x Male NPT	3/8"	18"	3,000
<b>5256-1.5</b>	1/2" Male x Male NPT	1/2"	18"	2,500
<b>5290-1.5</b>	3/4" Male x Male NPT	3/4"	18"	1,500
<b>5304-1.5</b>	1/4" Male x Male NPT	1/4"	18"	5,000
<b>5336-1.5</b>	3/8" Male x Male NPT	3/8"	18"	4,000
<b>15717</b>	Garden 3/4" NPTM (w/Part #10781) x 3/4" NP	3/4"	48"	300
<b>5423-1.5</b>	Twin Grade R 1/8" NPTM x BB 9-16 UNF	1/4" Twin	18"	200
<b>5424-1.5</b>	"T" Grade Twin Grade R 1/8" NPTM x BB 9-16 UNF	1/4" Twin	18"	200

## 90° ELBOWS

PART NO.	FITTING THREAD	I.D.	PSI
<b>6088</b>	Brass LP Male x Female NPT	1/4"	300
<b>208</b>	Brass LP Male x Female NPT	3/8"	300
<b>222</b>	Brass LP Male x Female NPT	1/2"	300
<b>385</b>	Brass LP Male x Female NPT	3/4"	300
<b>500</b>	Steel MP Male x Female NPT	3/8"	3,000
<b>1671</b>	Steel MP Male x Female NPT	1/2"	3,000
<b>15014</b>	Steel MP Male x Female NPT	3/4"	1,250
<b>616</b>	Steel HP Male x Female NPT	1/4"	5,000
<b>617</b>	Steel HP Male x Female NPT	3/8"	5,000

## HOSE STOPS & GUARDS

HOSE STOPS PART NO.	HOSE GUARD PART NO.	HOSE		CORD	OVERALL
		I.D.	O.D.		
<b>131</b>	<b>237-1</b>	1/4"	1/2"	12/3 SJO	2 1/2"
<b>131-1</b>	<b>237-1</b>	-	-	16/3 SJO	2 1/2"
<b>633</b>	<b>237-1</b>	1/4" Twin Line		-	3 1/2"
<b>131-3</b>	<b>237-1</b>	3/8"	2 1/32"	10/3 SO	2 1/2"
<b>131-4</b>	<b>398-1</b>	1/2"	3/4"	-	2 1/2"
<b>254</b>	-	1/2"	3/4"	-	3 1/2"
<b>430</b>	<b>398-1</b>	3/4"	1"	-	3 1/2"
<b>20214</b>	-	1"	1 9/16"	-	5"
<b>20215</b>	-	1 1/4"	1 13/16"	-	5"
<b>20216</b>	-	1 1/2"	2 1/16"	-	5"
<b>20217</b>	-	2"	2 9/16"	-	5"

## BEND RESTRICTORS

ADD SUFFIX	I.D.	DESCRIPTION	PSI
<b>-BxB</b>	1/4"	Black PVC Bend Restrictor	300
<b>-BxB</b>	3/8"	Black PVC Bend Restrictor	300
<b>-BxB</b>	1/2"	Black PVC Bend Restrictor	300

Designed to limit the degree of bending without compromising the integrity of the hose assembly while also preventing the hose-end from kinking, excessive wearing, & tearing.

## QUICK DISCONNECTS

PART NO.	I.D.	DESCRIPTION	CONNECTION	PSI
<b>10759-1</b>	1/4"	Quick" Disconnect	NPT (F)	300
<b>10759-2</b>	3/8"	Quick Disconnect	NPT (F)	300

Quick disconnect couplings thread onto end of hose fitting to provide fast, leak-proof connections for low pressure hose lines. Conveniently connect, interchange, & secure pneumatic tools or other spraying devices to any air, water, chemical or other hose lines.



WARNING: Cancer and reproductive Harm – See page 19 for more information – www.P65Warning.ca.gov



## 2 YEAR WARRANTY

Products manufactured by Coxreels are warranted for a period of two years from the date of sale to original purchaser. If within such warranty period any such equipment is proved, to Coxreels' satisfaction, to be defective, Coxreels shall be liable for the repair or, at Coxreels' option, replacement when the product is returned, freight prepaid, to Coxreels' plant or a Coxreels' service dealer. Coxreels' obligation hereunder shall be confined to such repair or replacement and shall be further conditioned upon Coxreels receiving written notice of any alleged defect within ten days after its discovery. Coxreels assumes no responsibility for improper choice of models or where products are used in excess of rated capacities and design functions, or under abnormal conditions. We make available a free engineering service to help with any product selection, application or problem.

Warranty is void if the product or any part thereof has been tampered with, altered, or repaired by other than authorized service personnel. Coxreels' responsibility ceases upon delivery to any common carrier, and we do not, unless previously instructed, insure shipments beyond point of delivery to such carrier. Any products, components or accessories that are not manufactured by Coxreels and are supplied by other manufacturers are subject to their respective guarantees or warranties. Certain products will carry their own warranties. Equipment specially built to customers' specifications and requirements is not subject to cancellation nor returnable for credit under any condition. We reserve the right to modify or alter materials, dimensions, design and construction, when necessary, to improve performance.

## RETURN POLICY

- No material will be accepted for return without written authorization by the factory, and a return goods authorization number assigned. Materials must be returned prepaid. A 20% restocking fee and a \$5.00 repacking charge normally applies. No material will be accepted for a credit after one year from the date of purchase. Custom products and special orders are not returnable.

## STATEMENT OF HOSE APPLICATIONS

Coxreels does not manufacture any hose. All hose supplied by Coxreels is selected from reliable commercial sources and is recommended for application on the basis of data supplied by the manufacturer. Coxreels assumes no responsibility for any other application or use. Hose supplied by Coxreels carries the warranty as listed by the manufacturer (90 days).

## TERMS

- Net 30 days on approved credit
- Minimum billing \$25.00
- Service charge 11/2% on past due accounts

## FREIGHT

- F.O.B. Factory
- Our responsibility ceases upon delivery to common carrier. Consignee must file claim for shortage and damaged freight with the carrier.

## DELIVERY

- Most standard items are shipped in five - ten business days or less. Consult customer service for availability.

## Coxreels' Customer Service - 1.800.269.7335

Call and request a Returned Merchandise Authorization# (RMA #). Warranty claims must be made by authorized Coxreels distributors. Be prepared to give the following information: product model number, serial number and purchase invoice number.

- Replacement parts ordered will be invoiced to your account.
- Once given an RMA #, you must write it on all boxes and paperwork. Coxreels will not accept your return without an RMA #.
- Upon receiving the return, if it is determined to be covered under warranty, a credit memo will be issued and mailed to you for your records.



## PLEASE REVIEW ALL SAFETY INFORMATION BEFORE CHOOSING AND USING ALL EQUIPMENT

**SERIOUS INJURY, DEATH AND DESTRUCTION OF PROPERTY** can result from improper selection or improper use of products described in this catalog. Since COXREELS has no control over the number and variety of applications for which its products may be purchased or the conditions under which they may be used, COXREELS liability on any claim, whether in contract, tort (including negligence), or otherwise, for any loss or damage shall in no case exceed the price paid for product or any part thereof which give rise to claim. However, the general information contained herein shall allow the customer to select and assume all responsibility for product acceptability and fitness for specific applications. As always, COXREELS technical assistance and support is available for your convenience.



### WARNING - USER RESPONSIBILITIES

The customer, installer, and end users shall, through analysis and testing, assume sole responsibility in making the final selection of reels and accessories. Furthermore, these parties shall hold COXREELS harmless for all liability, claims, suits, and expenses incurred. These parties shall ensure training, performance, endurance, routine inspections, maintenance, safety precautions and warnings regarding the application are enforced at all times. COXREELS is not responsible for use of products in excess of rated and recommended capacities, design functions, or abnormal conditions.



### CAUTION - PROPER SELECTION OF ACCESSORIES

Coxreels offers a wide variety of accessory items and optional features for its reels. It is the sole responsibility of the customer, installer, and end users to ensure that the proper items and features have been selected to fit the application. Consult with Coxreels technical support for available accessories and optional features which will help you to keep your product safe in its environment. These items may include mounting brackets, guards, guides, and electrical components.



### WARNING - FOLLOW INSTRUCTIONS

The customer, installer, and end users shall ensure that all potential users of these products receive continual training and access to all relevant product manuals and safety instructions. This information should be thoroughly reviewed prior to installation, stored and reviewed continually during use of the product. Coxreels assumes no responsibility for fitness of installation

and continued use in specific applications. Any overhead installations should be such that the reel is not supported solely by bolts under tension. A safety chain or cable is necessary to eliminate potential for damage or personal injury.



### IMPORTANT - FOLLOW GOOD MAINTENANCE PRACTICES

When receiving your products, establish a program for inspection, testing, and periodic replacement of worn items depending on factors such as; severity of application, frequency of equipment use, and past performance indicators. Use only properly trained persons to perform these duties. Update training periodically. Document the maintenance, inspections, and testing of products. Never allow an improperly functioning reel or accessory product to be put into use.

Documented inspections shall include in part, pressurized units, swivel joints, hose, hose fittings, cable, mounting hardware, roller guides and any such moving parts. Never allow the use of hoses or cables other than what is intended in the design of the reel. Changes in diameter, weight, length, or flexibility can affect the function and may cause damage or personal injury. Consult specific product manuals, or factory, with any questions regarding proper maintenance practices.

The use of any replacement components other than those provided by Coxreels is prohibited. Coxreels shall be held harmless from any improper selection of such components which may affect function and overall safety of the product.

**NOTE:** All designs, specifications, and dimensional data contained in this book are subject to change without notice. No additional warranties, express or implied, including warranties of merchantability for fitness for a particular purpose, are created by the descriptions and depictions of the products on in this book.



## PROP 65

In compliance of California's Proposition 65, Coxreels will be applying warning labels to all applicable products with regard to chemicals known to the state of California to cause cancer or reproductive harm.

All reels will carry the following warning.

Parts and components will carry warning labels relative to the respective materials used.

For more information see <http://www.coxreels.com/prop65.html>



### WARNING

This product can expose you to chemicals including nickel, which are known to the State of California to cause cancer, and chemicals including chromium, which are known to the State of California to cause birth defects or other reproductive harm.

For more information: [www.P65Warnings.ca.gov/product](http://www.P65Warnings.ca.gov/product)







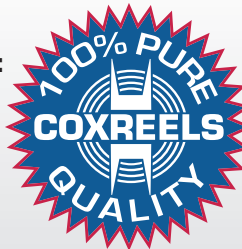
### INDUSTRY CATALOGS



### PRODUCT CATALOGS



**CORPORATE HEADQUARTERS:**  
Tempe, Arizona USA  
Phone: 480.820.6396 Fax: 480.820.5132  
Toll Free: 800.COX.REEL Toll Free Fax: 800.229.REEL  
www.coxreels.com info@coxreels.com



**INTERNATIONAL:**  
EUROPE / MIDDLE EAST / AFRICA  
Phone: +44 (0) 1536 464 990  
Fax: +44 (0) 1536 464 999  
www.crireels.com sales@cireels.com

