

COXREELS® EZ-SH Series "Super Hub™" spring driven hose reels, like the EZ-P Series, have a long history of dependable performance. The larger chassis and frame accommodate longer lengths and larger diameters of hose. Coxreels' original Super Hub™ dual axle support system increases the stability during operation, reduces vibration and strengthens the structural integrity of the reel.

EZ-SH, EZ-MP & EZ-HP SERIES

Do not exceed listed hose O.D. to obtain maximum length.

HOSE						LESS HOSE		SIZE INDEX
MODEL	I.D.	O.D.	FT.	PSI	APRX. LBS.	MODEL	APRX. LBS.	
LOW PRESSURE Models with hose are for air water service with a maximum temperature 150°F. Models less hose can be used for air, water or oil.								
EZ-SH-N-350	3/8"	5/8"	50	300	50	EZ-SHL-N-350	44	1
EZ-SH-N-375	3/8"	5/8"	75	300	68	EZ-SHL-N-375	59	2
EZ-SH-N-3100	3/8"	5/8"	100	300	71	EZ-SHL-N-3100	60	2
EZ-SH-N-450	1/2"	3/4"	50	300	54	EZ-SHL-N-450	46	1
EZ-SH-N-475	1/2"	3/4"	75	300	68	EZ-SHL-N-475	57	3
EZ-SH-N-4100	1/2"	3/4"	100	300	81	EZ-SHL-N-4100	66	3
EZ-SH-N-525	3/4"	1 1/16"	25	300	52	EZ-SHL-N-525	45	4
EZ-SH-N-550	3/4"	1 1/16"	50	300	69	EZ-SHL-N-550	56	5
MEDIUM PRESSURE Reels are furnished with standard one wire braid hose suitable for air, water or oil applications. Hose exceeds SAE R1 specifications. Maximum Temperature 250°F.								
EZ-MP-N-350	3/8"	1 1/16"	50	3,000	65	EZ-MPL-N-350	53	1
EZ-MP-N-450	1/2"	1 3/16"	50	2,500	67	EZ-MPL-N-450	53	6
HIGH PRESSURE Reels are furnished standard with S.A.E. 100R16 #1 or #2 wire braid hose suitable for grease and hydraulic oil applications. Maximum Temperature 250°F.								
EZ-HP-N-150	1/4"	9/16"	50	5,000	64	EZ-HPL-N-150	53	6
EZ-HP-N-350	3/8"	1 1/16"	50	4,000	65	EZ-HPL-N-350	53	7



Double axle support with Super Hub™



EZ-SH, EZ-MP & EZ-HP SERIES :: REEL SPECIFICATIONS

SWIVEL

- External fluid path with machined from solid brass 90° full-flow NPT swivel inlet (Zinc plated steel swivel on HP models)

- Swivel Seals: NITRILE

DESIGN & STRUCTURE

- Sturdy, single pedestal reel features Coxreels' exclusive Super Hub™ dual axle support system
- Guide arm adjusts to wall, floor, vehicle, & overhead positions
- Solid, one piece, heavy gauge 1/4" steel base & support post for maximum stability
- 1" solid steel axle & lubricated precision bearings for smooth rotation

EZ-COIL RETRACTION

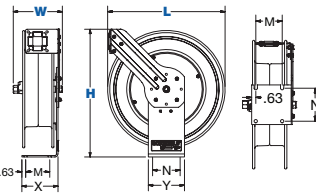
- OUR PATENTED SAFETY SYSTEM THAT RETRACTS UP TO 80% SLOWER THAN CONVENTIONAL SPRING DRIVEN REELS
- Enclosed factory tuned & matched cartridge-style spring motor
- Non-corrosive, stainless steel spring, pawl, & zinc plated ratchet
- Multi-position lock ratchet mechanism secures hose at desired length

REEL DIMENSIONS

Technical Data Sheets Available On Website

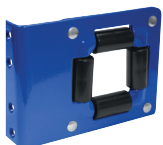
SIZE INDEX	W	H	L	X	Y	M	N
1	8 1/4"	21 1/4"	19 1/2"	6"	6"	4"	5"
2	8 1/4"	25 1/2"	24"	6"	6"	4"	5"
3	8 3/4"	25 1/2"	24"	6"	6"	4"	5"
4	9 3/4"	21 1/4"	19 1/2"	6"	6"	4"	5"
5	9 3/4"	25 1/2"	24"	6"	6"	4"	5"
6	8 3/4"	21 1/4"	19 1/2"	6"	6"	4"	5"
7	9 1/4"	21 1/4"	19 1/2"	6"	6"	4"	5"

Overall Dimensions Base Mounting Pattern



TOP REQUESTED UPGRADES & ACCESSORIES

SEE PAGE 17 FOR ADDITIONAL ACCESSORIES



UPGRADE TO SOLID ROLLERS

Heavy duty machined from solid plastic rollers.



ADD AIR TOOL KIT

BEND RESTRICTOR: Designed to limit the degree of bending without compromising the integrity of the hose assembly while also preventing the hose-end from kinking, excessive wearing, and tearing. Available for low pressure models.

QUICK DISCONNECT: Quick disconnect couplings tread onto end of hose fitting to provide fast, leak-proof connections for low pressure hose lines.



UPGRADE TO NITRILE OR RUBBER HOSE

NITRILE HOSE: Premium high quality, oil resistant, multi-purpose hose. The high tensile spiral synthetic yarn reinforcement provides excellent kink resistance. Temperature range: -20° F to +212° F.

SYNTHETIC RUBBER HOSE: Versatile general purpose hose. The synthetic rubber tube and cover resists heat, sunlight, ozone, and weathering. Temperature range -40° F to +212° F.



ADD BEND RESTRICTOR

Designed to limit the degree of bending without compromising the integrity of the hose assembly while also preventing the hose-end from kinking, excessive wearing, and tearing. Available for low pressure models



UPGRADE TO STAINLESS STEEL SWIVEL

Based on the upgraded medium pressure swivel, the stainless steel swivel is machined from solid 316 stainless steel and features increased wall thicknesses with upgraded seals and backup rings.



WARNING: Cancer and reproductive Harm – See page 19 for more information – www.P65Warning.ca.gov