

HOSE, CORD & CABLE REELS

# Air Transportation

**COXREELS SINCE 1923**

**AIRCRAFT MAINTENANCE - TERMINAL OPERATIONS - RAMP OPERATIONS - GROUND SUPPORT**



INDUSTRY CATALOG

# AIR TRANSPORTATION REELS



IT'S NOT JUST A LABEL,

**IT'S A BADGE OF HONOR**

Hose, cord and grounding cable reels are essential equipment in the aviation industry and specifically in the aircraft maintenance and ground support segments. Reels are the preferred choice for managing hoses or neatly and conveniently storing them.

## The Recognized Industry Leader

Coxreels is wholesale only since 1923. Our product is made to high standards, supplying industrial grade product to distributors and OEMs worldwide. We are recognized as the leader in the reeling industry. We have been providing the most complete and diverse line of hose, cord, and cable reels for 10 decades!

## The Most Complete Line of Aviation Reels in the Market

Mechanics and technicians that work in the aviation industry agree, having heavy duty equipment that is built to last is important when working in tough conditions - which would otherwise break low-quality equipment due to repetitive use. Our high-quality reeling products were meticulously engineered and designed with longevity in mind - everything from aviation general duty, aerospace research & development, service hangers, and more. Whether you need a low, medium or high-pressure rating for grease, oil, air or water, Coxreels® offers a reel to fit the application.

## Proven reeling solutions to aviation needs!

Coxreels® has the broadest, most complete line of reels, perfectly suited to help you get the job done – efficiently and effectively. We got you covered!

- Ground support
- Static discharge
- Lubricant Dispensing
- Aircraft Refueling
- Bulk Fluid Transfer
- Aircraft Support Vehicle Maintenance
- Potable Water Dispenser
- Power, Hydraulic, and Pneumatic Tools
- Aircraft Tire - Nitrogen Delivery
- Pressure Washing / Washdown
- Fire Suppression, Firefighting & Rescue
- Welding (Arc / Gas)

Our versatile and wide reel selection handles various capacities and comes in different sizes to suit any construction requirement. Our standard reeling devices suggested in this catalog are already specified to meet the needs of the aviation markets. Coxreels also has the engineering power to design and build custom reels, so please consult the factory if you cannot locate a reel that will work with your equipment, we will be happy to assist you with a solution.

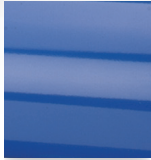
**VALUE THE DIFFERENCE...**

**Make COXREELS your reel choice!**



# PROFESSIONAL GRADE FEATURES

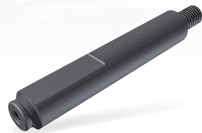
## A HIGHER LEVEL OF STANDARDS



**CPC™ POWDER COAT**  
Our blue powder coat finish is long lasting, chip resistant & rust inhibiting



**BRASS SWIVEL**  
External fluid path, machined from solid brass, full flow, swivel for simple seal maintenance



**STEEL AXLE**  
1" solid steel axle & lubricated bearings for extra strength & durability. Not a hollow tube & no fluid travels through it



**STEEL CONSTRUCTION**  
High-Quality steel construction provides superior strength and durability for heavy-duty applications in commercial and industrial settings



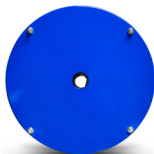
**COMPONENT COVER**  
External CPC powder coated steel components cover for simple slip ring routine maintenance



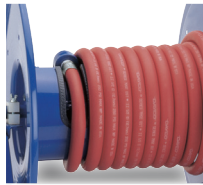
**EZ-COIL® SERIES**  
A patented safety system that retracts up to 80% slower than conventional reels



**CNC SPUN DISCS**  
All steel rolled edges & ribbed discs for added safety, strength & durability



**CARTRIDGE MOTOR**  
Enclosed factory tuned & matched cartridge style motor for safe & easy replacement



**LOW PROFILE RISER**  
Low profile riser with open drum slot allows for smooth even hose wraps that will not pinch or bind your hose. **NO HUMP!**



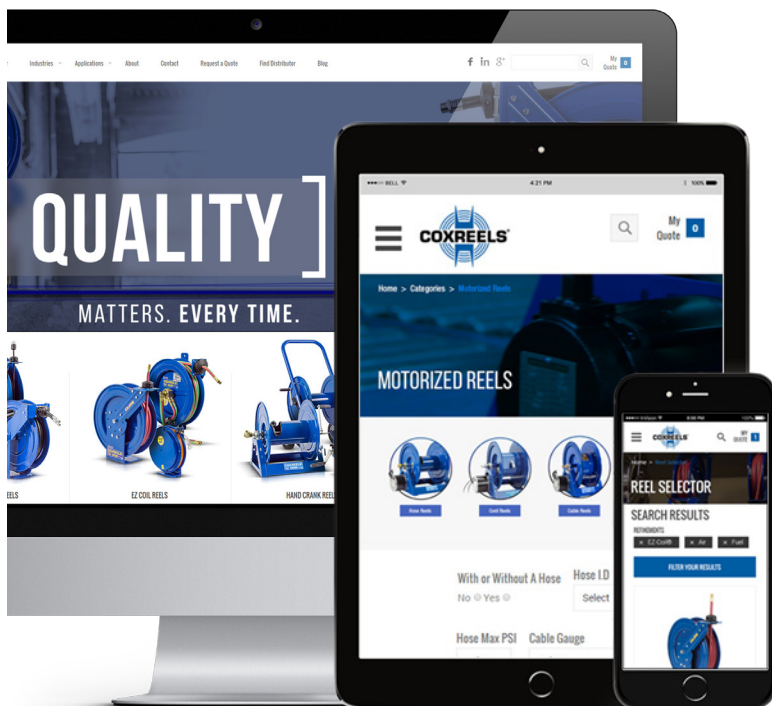
**ALL WELDED STEEL "A" FRAME**  
All welded steel "A" frame for strength & durability. **NOT BOLTED!**



**2 YEAR WARRANTY**  
Coxreels proudly stands behind our reels as they are built to last!



**USA MADE, QUALITY & SUPPORT**  
We take great pride in designing, building & supplying the world's finest reels made right here in the U.S.A.



## VISIT US ONLINE

Coxreels is committed to providing our customers with the ultimate online experience as they navigate through the most complete and diverse line of hose, cord, and cable reels.

We hope that you enjoy the fresh look and feel of our updated website and find that this portal serves as a valuable resource for you!

FOLLOW US

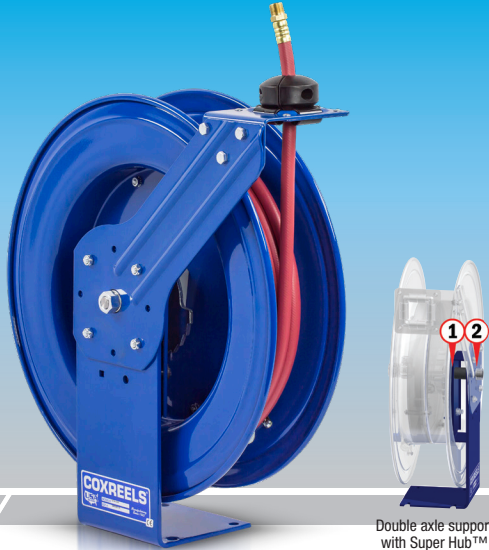


www.coxreels.com • 1.800.COX.REEL

AIR TRANSPORTATION **3**

# SH, MP & HP SERIES HEAVY DUTY HOSE REELS

1/4" - 3/4" I.D.



Double axle support with Super Hub™

**COXREELS® SH Series "Super Hub™" spring driven hose reels, like the P Series, have a long history of dependable performance.** The larger chassis and frame accommodate longer lengths and larger diameters of hose. Coxreels' original Super Hub™ dual axle support system increases the stability during operation, reduces vibration and strengthens the structural integrity of the reel.

## SH, MP & HP SERIES

Do not exceed listed hose O.D. to obtain maximum length.

HOSE							LESS HOSE		SIZE INDEX	
MODEL	I.D.	O.D.	FT.	PSI	APRX. LBS.	<b>EZ-COIL MODELS</b>	MODEL	APRX. LBS.		
<b>LOW PRESSURE</b>							Models with hose are for air water service with a maximum temperature 150°F. Models less hose can be used for air, water or oil.			
<b>SH-N-350</b>	3/8"	5/8"	50	300	50	<b>EZ-SH-350</b>	<b>SHL-N-350</b>	44	<b>1</b>	
<b>SH-N-375</b>	3/8"	5/8"	75	300	68	<b>EZ-SH-375</b>	<b>SHL-N-375</b>	59	<b>2</b>	
<b>SH-N-3100</b>	3/8"	5/8"	100	300	71	<b>EZ-SH-3100</b>	<b>SHL-N-3100</b>	60	<b>2</b>	
<b>SH-N-450</b>	1/2"	3/4"	50	300	54	<b>EZ-SH-450</b>	<b>SHL-N-450</b>	46	<b>1</b>	
<b>SH-N-475</b>	1/2"	3/4"	75	300	68	<b>EZ-SH-475</b>	<b>SHL-N-475</b>	57	<b>3</b>	
<b>SH-N-4100</b>	1/2"	3/4"	100	300	81	<b>EZ-SH-4100</b>	<b>SHL-N-4100</b>	66	<b>3</b>	
<b>SH-N-550</b>	3/4"	1 1/16"	50	300	69	<b>EZ-SH-550</b>	<b>SHL-N-550</b>	56	<b>5</b>	
<b>MEDIUM PRESSURE</b>							Reels are furnished with standard one wire braid hose suitable for air, water or oil applications. Hose exceeds SAE R1 specifications. Maximum Temperature 250°F.			
<b>MP-N-350</b>	3/8"	1 1/16"	50	3,000	65	<b>EZ-MP-350</b>	<b>MPL-N-350</b>	53	<b>1</b>	
<b>MP-N-450</b>	1/2"	1 3/16"	50	2,500	67	<b>EZ-MP-450</b>	<b>MPL-N-450</b>	53	<b>6</b>	
<b>MP-N-525</b>	3/4"	1 1/16"	25	1,500	61	-	<b>MPL-N-525</b>	51	<b>4</b>	
<b>MP-N-535</b>	3/4"	1 1/16"	35	1,500	68	-	<b>MPL-N-535</b>	54	<b>4</b>	
<b>HIGH PRESSURE</b>							Reels are furnished standard with S.A.E. 100R16 #1 or #2 wire braid hose suitable for grease and hydraulic oil applications. Maximum Temperature 250°F.			
<b>HP-N-150</b>	1/4"	9/16"	50	5,000	64	<b>EZ-HP-150</b>	<b>HPL-N-150</b>	53	<b>6</b>	
<b>HP-N-350</b>	3/8"	1 1/16"	50	4,000	65	<b>EZ-HP-350</b>	<b>HPL-N-350</b>	53	<b>7</b>	

### SH, MP & HP SERIES :: REEL SPECIFICATIONS

#### SWIVEL

- External fluid path with machined from solid brass 90° full-flow NPT swivel inlet (Zinc plated steel swivel on HP models)
- Swivel Seals: NITRILE

#### DESIGN & STRUCTURE

- Sturdy single pedestal reel features Coxreels' exclusive Super Hub™ dual axle support system
- Guide arm adjusts to wall, floor, vehicle & overhead positions
- Solid one piece, heavy gauge 1/4" steel base & support post for maximum stability
- 1" solid steel axle & lubricated precision bearings for smooth rotation
- Controlled retraction speed up to 80% slower on **EZ-COIL** models
- Enclosed factory tuned & matched cartridge-style spring motor
- Non-corrosive stainless steel spring, pawl & zinc plated ratchet
- Multi-position lock ratchet mechanism secures hose at desired length

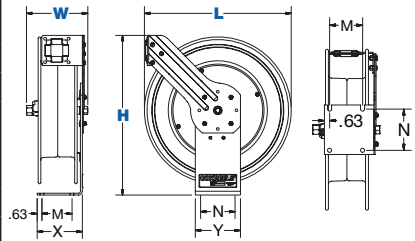
**WARNING:** Cancer and reproductive Harm – See page 23 for more information – [www.P65Warning.ca.gov](http://www.P65Warning.ca.gov)

### REEL DIMENSIONS

SIZE INDEX	W	H	L	X	Y	M	N
1	8 1/4"	21 1/4"	19 1/2"	6"	6"	4"	5"
2	8 1/4"	25 1/2"	24"	6"	6"	4"	5"
3	8 3/4"	25 1/2"	24"	6"	6"	4"	5"
4	9 5/8"	21 1/4"	19 1/2"	6"	6"	4"	5"
5	9 5/8"	25 1/2"	24"	6"	6"	4"	5"
6	8 3/4"	21 1/4"	19 1/2"	6"	6"	4"	5"
7	9 1/4"	21 1/4"	19 1/2"	6"	6"	4"	5"

Overall Dimensions      Base      Mounting

To order **EZ-Coil®** equipped models less hose, please add prefix "EZ-"



Technical Data Sheets Available On Website

### TOP REQUESTED UPGRADES & ACCES-

SEE PAGE 21 FOR ADDITIONAL ACCESSORIES



#### ORDER EZ-COIL® MODELS

EZ-Coil® is a patented controlled retraction technology offered exclusively on Coxreels' Safety Series reels. It retracts up to 80% slower than conventional reels, resulting in workplace safety, protection from injury & costly property damage.

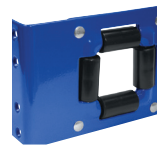
#### UPGRADE TO NITRILE OR RUBBER HOSE

**NITRILE HOSE:** Premium high quality, oil resistant, multi-purpose hose. The high tensile spiral synthetic yarn reinforcement provides excellent kink resistance. Temperature range: -20° F to +212° F.

**SYNTHETIC RUBBER HOSE:** Versatile general purpose hose. The synthetic rubber tube and cover resists heat, sunlight, ozone, and weathering. Temperature range -40° F to +212° F

#### UPGRADE TO STAINLESS STEEL SWIVEL

Based on the upgraded medium pressure swivel, the stainless steel swivel is machined from solid 316 stainless steel and features increased wall thicknesses with upgraded seals and backup rings.



#### UPGRADE TO SOLID ROLLERS

Heavy duty machined from solid plastic rollers.



#### ADD AIR TOOL KIT

**BEND RESTRICTOR:** Designed to limit the degree of bending without compromising the integrity of the hose assembly while also preventing the hose-end from kinking, excessive wearing, and tearing. Available for low pressure models.

**QUICK DISCONNECT:** Quick disconnect couplings tread onto end of hose fitting to provide fast, leak-proof connections for low pressure hose lines.

#### ADD BEND RESTRICTOR

Designed to limit the degree of bending without compromising the integrity of the hose assembly while also preventing the hose-end from kinking, excessive wearing, and tearing. Available for low pressure models



**COXREELS® T Series "Truck Mount" spring driven hose reels are the toughest hose reels in the spring driven line.** The extra large chassis with dual pedestal-style arms and Coxreels' Super Hub™ provides triple axle support while reducing vibration and strengthening the structural integrity of the reel. Making it perfect for on and off-road applications that demand reliability in the most abusive and demanding environments.

## T SERIES

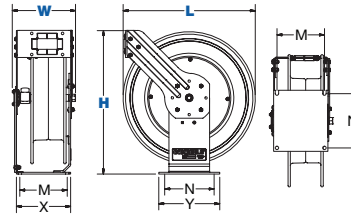
Do not exceed listed hose O.D. to obtain maximum length.

HOSE							LESS HOSE		SIZE INDEX
MODEL	I.D.	O.D.	FT.	PSI	APRX. LBS.	EZ-COIL MODELS	MODEL	APRX. LBS.	
<b>LOW PRESSURE</b> Models with hose are for air water service with a maximum temperature 150°F. Models less hose can be used for air, water or oil.									
TSH-N-350	3/8"	5/8"	50	300	61	EZ-TSH-350	TSHL-N-350	55	1
TSH-N-3100	3/8"	5/8"	100	300	85	EZ-TSH-3100	TSHL-N-3100	74	2
TSH-N-3125	3/8"	5/8"	125	300	103	-	TSHL-N-3125	90	2
TSH-N-450	1/2"	3/4"	50	300	63	EZ-TSH-450	TSHL-N-450	55	1
TSH-N-4100	1/2"	3/4"	100	300	95	EZ-TSH-4100	TSHL-N-4100	80	2
TSH-N-550	3/4"	1 1/16"	50	300	83	EZ-TSH-550	TSHL-N-550	70	3
TSH-N-650	1"	1 1/2"	50	300	98	-	TSHL-N-650	77	4
<b>MEDIUM PRESSURE</b> Reels are furnished with standard one wire braid hose suitable for air, water or oil applications. Hose exceeds SAE R1 specifications. Maximum Temperature 250°F.									
TMP-N-350	3/8"	1 1/16"	50	3,000	74	EZ-TMP-350	TMPL-N-350	61	1
TMP-N-3100	3/8"	1 1/16"	100	3,000	106	-	TMPL-N-3100	82	2
TMP-N-450	1/2"	1 3/16"	50	2,500	77	EZ-TMP-450	TMPL-N-450	64	1
TMP-N-4100	1/2"	1 3/16"	100	2,500	106	-	TMPL-N-4100	80	2
TMP-N-550	3/4"	1 1/16"	50	1,500	94	EZ-TMP-550	TMPL-N-550	74	3
TMP-N-650	1"	1 3/8"	50	1,250	116	-	TMPL-N-650	81	5
<b>HIGH PRESSURE</b> Reels are furnished standard with S.A.E. 100R16 #1 or #2 wire braid hose suitable for grease and hydraulic oil applications. Maximum Temperature 250°F.									
THP-N-150	1/4"	9/16"	50	5,000	74	EZ-THP-150	THPL-N-150	62	1
THP-N-1100	1/4"	9/16"	100	5,000	104	EZ-THP-1100	THPL-N-1100	82	2
THP-N-350	3/8"	1 1/16"	50	4,000	78	EZ-THP-350	THPL-N-350	66	1

To order EZ-Coil® equipped models less hose, please add prefix "EZ-"

## REEL DIMENSIONS

SIZE INDEX	W	H	L	X	Y	M	N
1	9 3/8"	21 1/4"	19 1/2"	8"	9"	7"	8"
2	9 3/8"	25 1/2"	24"	8"	9"	7"	8"
3	9 7/8"	25 1/2"	24"	8"	9"	7"	8"
4	12"	25 1/2"	24"	8"	9"	7"	8"
5	12 1/2"	25 1/2"	24"	8"	9"	7"	8"



Technical Data Sheets Available On Website

## TOP REQUESTED UPGRADES & ACCESSORIES

SEE PAGE 21 FOR ADDITIONAL ACCESSORIES



### ORDER EZ-COIL® MODELS

EZ-Coil® is a patented controlled retraction technology offered exclusively on Coxreels' Safety Series reels. It retracts up to 80% slower than conventional reels, resulting in workplace safety, protection from injury & costly property damage.

### UPGRADE TO NITRILE OR RUBBER HOSE

**NITRILE HOSE:** Premium high quality, oil resistant, multi-purpose hose. The high tensile spiral synthetic yarn reinforcement provides excellent kink resistance. Temperature range: -20° F to +212° F.

**SYNTHETIC RUBBER HOSE:** Versatile general purpose hose. The synthetic rubber tube and cover resists heat, sunlight, ozone, and weathering. Temperature range -40° F to +212° F.

### UPGRADE TO STAINLESS STEEL SWIVEL

Based on the upgraded medium pressure swivel, the stainless steel swivel is machined from solid 316 stainless steel and features increased wall thicknesses with upgraded seals and backup rings.



### UPGRADE TO SOLID ROLLERS

Heavy duty machined from solid plastic rollers.



### ADD AIR TOOL KIT

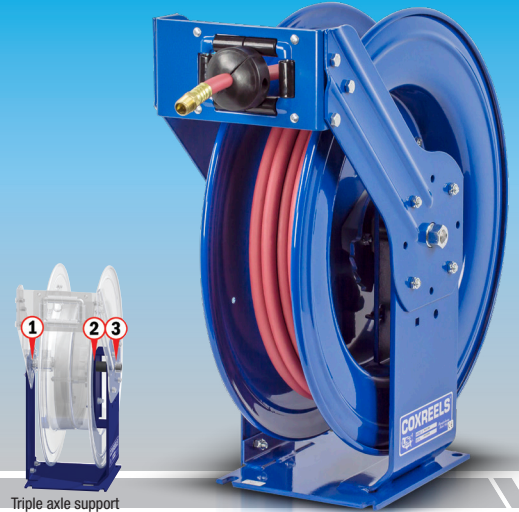
**BEND RESTRICTOR:** Designed to limit the degree of bending without compromising the integrity of the hose assembly while also preventing the hose-end from kinking, excessive wearing, and tearing. Available for low pressure models.

**QUICK DISCONNECT:** Quick disconnect couplings tread onto end of hose fitting to provide fast, leak-proof connections for low pressure hose lines.



### ADD BEND RESTRICTOR

Designed to limit the degree of bending without compromising the integrity of the hose assembly while also preventing the hose-end from kinking, excessive wearing, and tearing. Available for low pressure models.



Triple axle support with a full frame & Super Hub™

## T SERIES :: REEL SPECIFICATIONS

### SWIVEL

- External fluid path with machined from solid brass 90° full-flow NPT swivel inlet (Zinc plated steel swivel on HP models)
- Electroless nickel plated steel swivel on 1" models
- Swivel Seals: NITRILE

### DESIGN & STRUCTURE

- Sturdy dual pedestal reel features Coxreels' exclusive Super Hub™ dual axle support system
- Guide arm adjusts to wall, floor, vehicle & overhead positions
- Stainless Steel rollers on 3/4" & 1" models
- Solid one piece, heavy gauge 1/4" steel base & support posts for maximum strength
- 1" solid steel axle & lubricated precision bearings
- Controlled retraction speed up to 80% slower on EZ-COIL models
- Enclosed factory tuned & matched cartridge-style spring motor
- Non-corrosive stainless steel spring, pawl & zinc plated ratchet
- Multi-position lock ratchet mechanism secures hose at desired length

WARNING: Cancer and reproductive Harm – See page 23 for more information – www.P65Warning.ca.gov



1/4" I.D.

# P-W & SHW SERIES

SPRING DRIVEN WELDING HOSE REELS



**COXREELS® P-W and SHW Series** spring driven "Welding" hose reels are the ideal solution for managing bulky twin line welding hose. The P-W Series, like the P Series, is more compact in size and shares the reputation for long lasting performance. The SHW Series has a larger chassis and frame to accommodate longer lengths of welding hose and Coxreels' original Super Hub dual axle support system for increased stability during operation, less vibration and greater structural integrity.

## P-W & SHW SERIES

Do not exceed listed hose O.D. to obtain maximum length.

HOSE						LESS HOSE		SIZE INDEX
MODEL	I.D.	FT.	PSI	APRX. LBS.	EZ-COIL MODELS	MODEL	APRX. LBS.	
<b>OXYGEN-ACETYLENE</b> <small>Hose supplied on reel is twin-siemese type meeting R.M.A. and C.G.A. type V.D. grade R specifications. Use of other types of hose is not recommended.</small>								
P-W-125	1/4"	25	200	46	EZ-P-W-125	P-WL-125†	39	1
P-W-135	1/4"	35	200	48	-	P-WL-135†	40	1
P-W-140	1/4"	40	200	51	-	P-WL-140†	42	1
SHW-N-150	1/4"	50	200	64	EZ-SHW-150	SHWL-N-150†	52	2
SHW-N-175	1/4"	75	200	80	EZ-SHW-175	SHWL-N-175†	63	3
SHW-N-1100	1/4"	100	200	84	EZ-SHW-1100	SHWL-N-1100	62	3
<b>OTHER FUELS</b> <small>Hose supplied on reel is twin-siemese type grade "T." Grade "T" reels and hoses are used for a wide variety of gases, such as MAPP, propane, natural and fuel.</small>								
P-WT-125	1/4"	25	200	46	EZ-P-WT-125	P-WTL-125†	39	1
SHWT-N-150	1/4"	50	200	64	EZ-SHWT-150	SHWTL-N-150†	52	2
SHWT-N-175	1/4"	75	200	80	EZ-SHWT-175	SHWTL-N-175†	63	3
SHWT-N-1100	1/4"	100	200	84	EZ-SHWT-1100	SHWTL-N-1100	62	3

To order EZ-Coil® equipped models less hose, please add prefix "EZ-". Less hose models comes with inlet hose

### P-W & SHW SERIES :: REEL SPECIFICATIONS



#### SWIVEL

- External fluid path with 90° full-flow dual ported brass swivel offering both connections from the same side of the reel
- Swivel lock bracket ensures maximum safety
- Swivel Seals: VITON®

#### DESIGN & STRUCTURE

- Designed for Oxy-Acetylene or "T" grade welding hose
- Single pedestal reel with space saving design facilitates workplace organization
- Guide arm adjusts to wall, floor & overhead positions
- Solid one piece, heavy gauge 1/4" steel base & support post for maximum stability
- 1" solid steel axle & lubricated precision bearings for smooth rotation
- Coxreels' exclusive Super Hub™ dual axle support system on models with size index #2 & #3
- Controlled retraction speed up to 80% slower on EZ-COIL models
- Enclosed factory tuned & matched cartridge-style spring motor
- Non corrosive stainless steel spring, pawl & zinc plated ratchet
- Multi-position non-sparking lock ratchet mechanism secures hose at desired length

#### REEL DIMENSIONS

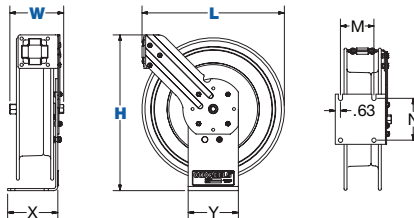
Technical Data Sheets Available On Website

SIZE INDEX	W	H	L	X	Y	M	N
1	8 1/2"	18 5/8"	17"	6"	6"	4"	5"
2	10 1/4"	21 1/4"	19 1/2"	6"	6"	4"	5"
3	10 1/4"	25 1/2"	24"	6"	6"	4"	5"

Overall Dimensions

Base

Mounting Pattern



**!** WARNING: Cancer and reproductive Harm – See page 23 for more information – [www.P65Warning.ca.gov](http://www.P65Warning.ca.gov)

### TOP REQUESTED UPGRADES & ACCESSORIES

SEE PAGE 21 FOR ADDITIONAL ACCESSORIES



#### ORDER EZ-COIL® MODELS

EZ-Coil® is a patented controlled retraction technology offered exclusively on Coxreels' Safety Series reels. It retracts up to 80% slower than conventional reels, resulting in workplace safety, protection from injury & costly property damage.



#### UPGRADE TO SOLID ROLLERS

Heavy duty machined from solid plastic rollers.



**COXREELS® PC Series** spring driven "Power Cord" reels are heavy duty, industrial grade power sources. They replace tangled extension cords and self-retract to increase safety, productivity and efficiency. Modeled after the P and SH Series, the PC Series are designed for long-lasting, trouble-free performance even under the most demanding conditions.

## PC SERIES



		CORD							EZ-COIL MODELS	SIZE INDEX
MODEL	ACCESSORY	INLET / OUTLET	AWG / NO COND.	CORD FT.	TYPE	VOLTS	AMPS	APRX. LBS.		
<b>FOR INDOOR USE ONLY!</b> All models rated at 115 volts, 60 hz single phase only.										
PC13-3516-A <sup>†</sup>	Single Industrial Receptacle <sup>†</sup>		16 / 3	35	SJO	115	13	34	-	1
PC13-5016-A <sup>†</sup>			16 / 3	50	SJO	115	13	36	EZ-PC13-5016-A	1
PC24-0016-A <sup>†</sup>			16 / 3	100	SJO	115	13	73	EZ-PC24-0016-A	4
PC13-3512-A <sup>†</sup>	Single Industrial Receptacle <sup>†</sup>		12 / 3	35	SJO	115	20	37	-	1
PC13-5012-A <sup>†</sup>			12 / 3	50	SJO	115	20	40	EZ-PC13-5012-A	1
PC24-0012-A <sup>†</sup>			12 / 3	100	SJO	115	20	81	EZ-PC24-0012-A	4
PC13-3512-B <sup>†</sup>	Quad "4 Plug" Industrial Receptacle <sup>†</sup>		12 / 3	35	SJO	115	20	38	-	1
PC13-5012-B <sup>†</sup>			12 / 3	50	SJO	115	20	41	EZ-PC13-5012-B	1
PC24-0012-B <sup>†</sup>			12 / 3	100	SJO	115	20	84	EZ-PC24-0012-B	4
PC13-3516-F <sup>†</sup>	Duplex G.F.C.I. Metal Industrial Receptacle <sup>†</sup>		16 / 3	35	SJO	115	13	36	-	1
PC13-5016-F <sup>†</sup>			16 / 3	50	SJO	115	13	38	EZ-PC13-5016-F	1
PC24-0016-F <sup>†</sup>			16 / 3	100	SJO	115	13	73	EZ-PC24-0016-F	4
PC13-3512-F <sup>†</sup>			12 / 3	35	SJO	115	20	39	-	1
PC13-5012-F <sup>†</sup>			12 / 3	50	SJO	115	20	42	EZ-PC13-5012-F	1
PC24-0012-F <sup>†</sup>			12 / 3	100	SJO	115	20	83	EZ-PC24-0012-F	4
PC24-0016-X	With Cord, Less Accessory		16 / 3	100**	SJO	115	13	71	EZ-PC24-0016-X	4
PC13-5012-X <sup>††</sup>			12 / 3	50**	SJO	115	20	40	EZ-PC13-5012-X	1
PC24-0012-X			12 / 3	100**	SJO	115	20	81	EZ-PC24-0012-X	4
PC13-3516-4	With Cord, Less Accessory		16 / 4	35	SJO	115	10	34	-	1
PC13-5016-4			16 / 4	50	SJO	115	10	36	-	1
PC24-0016-4			16 / 4	100	SJO	115	10	74	-	4
PC13-3512-4			12 / 4	35	SJO	115	20	31	-	1
PC13-5012-4			12 / 4	50	SJO	115	20	40	EZ-PC13-5012-4	1
PC24-0012-4			12 / 4	100	SJO	115	20	85	-	4
PC13L-5016 <sup>††</sup>	Less Cord, Less Accessory		16 / 3	50*	SJO	115	25	31	EZ-PC13L-5016	1
PC24L-0016			16 / 3	100	SJO	115	25	62	EZ-PC24L-0016	4
PC13L-5012 <sup>††</sup>			12 / 3	50	SJO	115	25	29	EZ-PC13L-5012	1
PC24L-0012			12 / 3	100	SJO	115	25	64	EZ-PC24L-0012	4
PC13L-5016-4	Less Cord, Less Accessory		16 / 4	50	SJO	115	25	31	-	1
PC24L-0016-4			16 / 4	100	SJO	115	25	62	-	4
PC13L-5012-4			12 / 4	50	SJO	115	25	29	-	1
PC24L-0012-4			12 / 4	100	SJO	115	25	64	-	4



UL Listed <sup>†</sup>

UL Listed <sup>††</sup>

### PC SERIES :: REEL SPECIFICATIONS

#### SLIP RING

- External heavy gauge CPC™ powder coated steel components cover for simple slip ring routine maintenance
- Electrical current runs through a 25AMP / 600V rated slip ring (35AMP on select models)
- Include 5' lead cable & grounding plug (except on less cord models)

#### DESIGN & STRUCTURE

- Single pedestal cord reel with space saving design facilitates workplace organization
- Guide arm adjusts to wall, floor & overhead positions
- Solid one piece, heavy gauge 1/4" steel base & support post for maximum stability
- Coxreels' exclusive Super Hub™ dual axle support system on models with size index #4
- 1" solid steel axle & lubricated precision bearings for smooth rotation
- Controlled retraction speed up to 80% slower on EZ-COIL models
- Enclosed factory tuned & matched cartridge-style spring motor
- Non-corrosive stainless steel spring, pawl & zinc plated ratchet
- Multi-position lock ratchet mechanism secures cord at desired length

WARNING: Cancer and reproductive Harm – See page 23 for more information – [www.P65Warning.ca.gov](http://www.P65Warning.ca.gov)

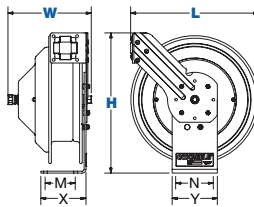
SPRING DRIVEN

EZ-COIL®

### REEL DIMENSIONS Technical Data Sheets Available On Website

SIZE INDEX	W	H	L	X	Y	M	N
1	8 1/2"	14 7/8"	13 1/2"	5"	6"	3"	5"
2	10 1/4"	25 1/2"	24"	6"	6"	4"	5"

Overall Dimensions      Base      Mounting Pattern



### TOP REQUESTED UPGRADES & ACCESSORIES

SEE PAGE 21 FOR ADDITIONAL ACCESSORIES



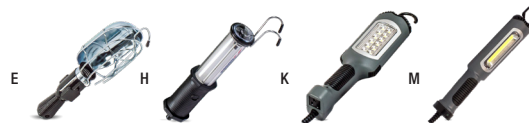
#### ORDER EZ-COIL® MODELS

EZ-Coil® is a patented controlled retraction technology offered exclusively on Coxreels' Safety Series reels. It retracts up to 80% slower than conventional reels, resulting in workplace safety, protection from injury & costly property damage.



#### UPGRADE TO SOLID ROLLERS

Heavy duty machined from solid plastic rollers.



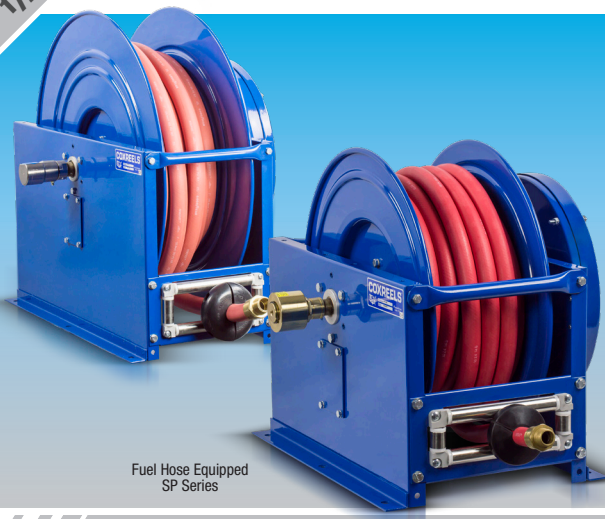
#### ORDER LIGHT MODELS

- E SUFFIX: Caged drop light with tool tap plug.
- H SUFFIX: Industrial duty LED light 6X 3W HO
- K SUFFIX: Industrial duty LED light 12X 1W SMD
- M SUFFIX: Industrial duty LED light 8W COB



1/2" - 1 1/2" I.D.

# SP SERIES HIGH CAPACITY HOSE REELS



Fuel Hose Equipped SP Series

**COXREELS® SP Series "Single Product Delivery" spring driven hose reels are built to handle large hose diameters.** Used in applications demanding large volume delivery in low and medium pressures such as fuel and water. The sturdy box-style frame has heavy duty steel cross supports to all four corners for extra strength and rigidity.

## SP SERIES

HOSE							LESS HOSE		SIZE INDEX
MODEL	I.D.	O.D.	FT.	PSI	INLET/OUTLET N.P.T.	APRX. LBS.	MODEL	APRX. LBS.	
<b>LOW PRESSURE</b>							Dual braid hose for applications 250 to 300 psi and temperatures to 150° F. Reel less hose 250° F. For higher temperatures and pressures, see price sheet or consult factory.		
SLP-4100	1/2"	3/4"	100	300	1/2"	111	SLPL-4100	96	1
SLP-550	3/4"	1 1/16"	50	300	3/4"	99	SLPL-550	86	2
SLP-5100	3/4"	1 1/16"	100	300	3/4"	151	SLPL-5100	126	3
SLP-650	1"	1 1/2"	50	300	1"	139	SLPL-650	109	4
SLP-675	1"	1 1/2"	75	300	1"	193	SLPL-675	148	5
	1 1/4"	1 3/16"	50	250	1 1/2"***	-	SLPL-750	123	6
	1 1/2"	2 1/16"	50	250	1 1/2"	-	SLPL-850	138	7
<b>MEDIUM PRESSURE</b>							Steel reinforced 100 RI hose for applications 1500 to 2500 psi and temperatures to 250° F. For higher temperatures and pressures, see price sheet or consult factory.		
SMP-4100	1/2"	13/16"	100	2,500	1/2"	139	SMPL-4100	113	1
SMP-550	3/4"	1 1/16"	50	1,500	3/4"	109	SMPL-550	89	2
SMP-575	3/4"	1 1/16"	75	1,500	3/4"	151	SMPL-575	121	3
SMP-5100	3/4"	1 1/16"	100	1,500	3/4"	165	SMPL-5100	126	3
	1"	1 3/8"	50	2,000	1"	-	SMPL-650	110	4
	1"	1 3/8"	75	2,000	1"	-	SMPL-675	135	5
<b>FUEL HOSE REELS</b>							Steel reinforced 100 RI hose for applications 1500 to 2500 psi and temperatures to 250° F. For higher temperatures and pressures, see price sheet or consult factory.		
SLPF-550	3/4"	1 1/16"	50	300	99	3/4"	SLPL-550	86	2
SLPF-575	3/4"	1 1/16"	75	300	136	3/4"	SLPL-575	117	3
SLPF-5100	3/4"	1 1/16"	100	300	151	3/4"	SLPL-5100	126	3
SLPF-650	1"	1 1/2"	50	300	139	1"	SLPL-650	109	4
SLPF-675	1"	1 1/2"	75	300	193	1"	SLPL-675	148	5

### SP SERIES :: REEL SPECIFICATIONS

#### SWIVEL

- Machined from solid brass 90° full-flow NPT swivel inlets
- Swivel Seals: NITRILE (AFLAS on 1" models)
- Electroless nickel plated steel 90° swivel on 1" models
- External fluid path with in-line electroless nickel plated steel full-flow NPT swivel on 1 1/4" and 1 1/2" models
- **On Fuel Models:** Machined from solid brass 90° full-flow NPT swivel inlet for fuel dispensing applications. Electroless nickel plated steel swivel on 1" models. Swivel seals: Nitrile

#### DESIGN & STRUCTURE

- Reel features a sturdy box-style frame design
- Reel adjusts to wall, floor, vehicle & overhead positions
- Heavy gauge 1/4" steel base for maximum strength
- Reinforced steel frame provides maximum strength & stability
- Long lasting self-lubricated flange bearings for smooth rotation
- Heavy duty 1" stainless steel pinch-proof rollers
- Enclosed factory tuned & matched cartridge-style spring motor
- Non corrosive stainless steel pawl spring
- Cast iron lock ring with non-sparking bronze pawl
- Multi-position lock ratchet mechanism secures hose at desired length
- **On Fuel Models:** Fuel dispensing hose designed to convey non-aromatic fuels including diesel, kerosene, fuel oil & heating oil. Temperature Range: -20°F to +190°F. Provided with non-sparking mechanism

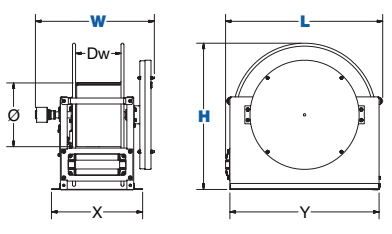
**WARNING:** Cancer and reproductive Harm – See page 23 for more information – www.P65Warning.ca.gov

SPRING DRIVEN

### REEL DIMENSIONS

SIZE INDEX	W	H	L	X	Y	Ø	Dw
1	18 1/2"	20 1/2"	22 7/8"	15 3/8"	21 1/2"	10 1/2"	7 1/2"
2	19 5/8"	20 1/2"	22 7/8"	15 3/8"	21 1/2"	10 1/2"	7 1/2"
3	19 5/8"	24 1/2"	26 3/8"	15 3/8"	25"	10 1/2"	7 1/2"
4	21"	24 1/2"	26 3/8"	15 3/8"	25"	10 1/2"	7 1/2"
5	21"	28 1/2"	30 3/8"	15 3/8"	29"	10 1/2"	7 1/2"
6	18"	28 1/2"	30 3/8"	15 3/8"	29"	10 1/2"	7 1/2"
7	20"	28 1/2"	30 3/8"	17 3/8"	29"	10 1/2"	9 1/2"

Overall Dimensions                      Base                      Drum



Technical Data Sheets Available On Website

### TOP REQUESTED UPGRADES & ACCESSORIES

SEE PAGE 21 FOR ADDITIONAL ACCESSORIES



#### UPGRADE TO NITRILE OR RUBBER HOSE

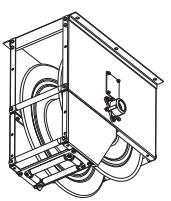
**NITRILE HOSE:** Premium high quality, oil resistant, multi-purpose hose. The high tensile spiral synthetic yarn reinforcement provides excellent kink resistance. Temperature range: -20° F to +212° F.

**SYNTHETIC RUBBER HOSE:** Versatile general purpose hose. The synthetic rubber tube and cover resists heat, sunlight, ozone, and weathering. Temperature range -40° F to +212° F



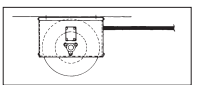
#### UPGRADE TO STAINLESS STEEL SWIVEL

**STAINLESS STEEL CAPTIVE BEARING SWIVEL / STAINLESS STEEL IN-LINE SWIVEL:** the stainless steel swivel is machined from solid 304 stainless steel for increased corrosion resistance. These optional stainless steel swivel are available for 1 1/4" and 1 1/2" models.

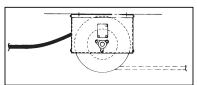


#### ADDITIONAL MOUNTING PATTERNS

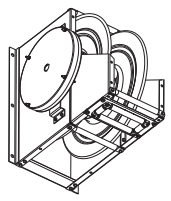
**"BXIX":** Ceiling Mount. Use for stretch, recover, or lift.



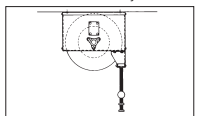
**STRETCH**  
With Or Without Roller Guide  
Special Spring Motor Required,  
Consult Factory



**RECOVER**  
(Pick-up) No Roller Guide Needed,  
Special Spring Motor Required,  
Consult Factory



**"BXCX":** Wall Mount.  
Use for lift.

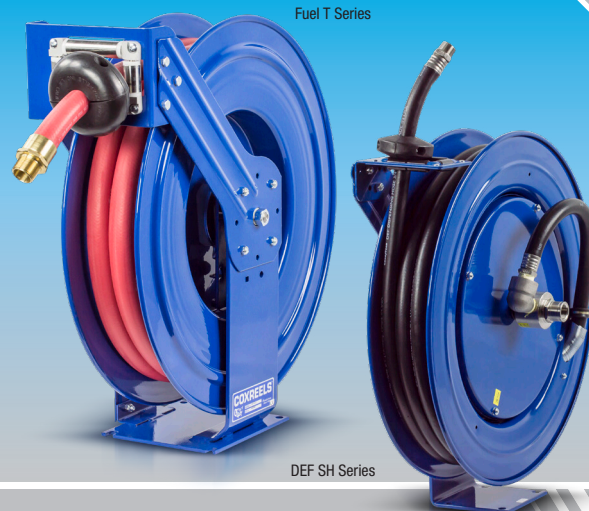


**LIFT**  
With Roller Guide





**COXREELS® DEF Series** are equipped with a stainless steel external full-flow swivel and chemical resistant Viton® seals to provide a safe, reliable Diesel Exhaust Fluid (DEF) dispensing solution. The swivel is easy to access for simple seal maintenance and fast DEF dispenser hose installation. Coxreels® professional DEF reeling systems are available in heavy-duty single pedestal (SH Series) or supreme-duty dual pedestal (T Series) configurations. Both versatile designs are outfitted with Coxreels' original Super Hub™ dual axle support systems to increase stability and reduce vibration during operation, making these reels the perfect DEF handling solutions for either stationary or rugged mobile applications.



## DEF SERIES

Models are equipped with DEF hose. Note: Do not exceed listed hose O.D. to obtain maximum length.

HOSE							LESS HOSE		SIZE INDEX
MODEL	I.D.	O.D.	FT.	PSI	APRX. LBS.	EZ-COIL MODELS	MODEL	APRX. LBS.	
<b>DEF-SH SERIES</b>									
-	1/2"	7/8"	50	300	-	-	*SHL-N-450-BBX	46	1
SH-N-525-DF-BBX	3/4"	1 1/16"	25	300	52	EZ-SH-525-DF-BBX	SHL-N-525-DF-BBX	45	2
SH-N-550-DF-BBX	3/4"	1 1/16"	50	300	69	EZ-SH-550-DF-BBX	SHL-N-550-DF-BBX	56	3
<b>DEF-T SERIES</b>									
-	1/2"	3/4"	50	300	-	-	*TSHL-N-450-BBX	55	4
-	3/4"	1 1/16"	35	300	-	-	*TSHL-N-535-DF-BBX	67	5
TSH-N-550-DF-BBX	3/4"	1 1/16"	50	300	83	EZ-TSH-550-DF-BBX	TSHL-N-550-DF-BBX	70	5
-	1"	1 1/2"	35	300	-	-	TSHL-N-635-BBX	71	7
-	1"	1 1/2"	50	300	-	-	TSHL-N-650-BBX	77	6

\*EZ-Coil® option only available on these less hose models. Please add prefix "EZ-"

**COXREELS® Fuel Dispensing Reels** are designed to handle various non-aromatic fuel applications including diesel, kerosene, fuel oil and heating oil. Coxreels® professional fuel dispensing reels supreme-duty dual pedestal are an essential component found in utility, ground support, and bulk liquid handling transport services mounted on fuel storage & dispensing systems, fuel/lube trucks, aircraft refuelers, and tank trucks. The convenient uncoiling systems with the added hose control allow the operator to efficiently handle fuel transfers.

## FUEL HOSE SERIES

Models are equipped with fuel hose. Note: Do not exceed listed hose O.D. to obtain maximum length.

HOSE							LESS HOSE		SIZE INDEX
MODEL	I.D.	O.D.	FT.	PSI	APRX. LBS.	EZ-COIL MODELS	MODEL	APRX. LBS.	
<b>FUEL HOSE T SERIES</b>									
TSHF-N-535	3/4"	1 3/16"	35	300	77	EZ-TSHF-535	TSHL-N-535-BXN	67	5
TSHF-N-550	3/4"	1 3/16"	50	300	83	EZ-TSHF-550	*TSHL-N-550-BXN	70	5
TSHF-N-575	3/4"	1 3/16"	75	300	93	-	TSHL-N-575-BXN	73	6
TSHF-N-635	1"	1 1/2"	35	300	92	-	TSHL-N-635-BXN	71	7
TSHF-N-650	1"	1 1/2"	50	300	98	-	TSHL-N-650-BXN	77	6

\*EZ-Coil® option only available on these less hose models. Please add prefix "EZ-"

## REEL DIMENSIONS

Technical Data Sheets Available On Website

SIZE INDEX	W	H	L	X	Y	M	N
1	8 1/4"	21 1/4"	19 1/2"	6"	6"	4"	5"
2	9 3/8"	21 1/4"	19 1/2"	6"	6"	4"	5"
3	9 7/8"	25 1/2"	24"	6"	6"	4"	5"
4	9 3/8"	21 1/4"	19 1/2"	8"	9"	7"	8"
5	9 7/8"	25 1/2"	24"	8"	9"	7"	8"
6	12"	25 1/2"	24"	8"	9"	7"	8"
7	10"	25 1/2"	24"	8"	9"	7"	8"

Overall Dimensions      Base      Mounting Pattern

## TOP REQUESTED UPGRADES & ACCESSORIES



### ORDER EZ-COIL® MODELS

EZ-Coil® is a patented controlled retraction technology offered exclusively on Coxreels' Safety Series reels. It retracts up to 80% slower than conventional reels, resulting in workplace safety, protection from injury & costly property damage.



### UPGRADE TO SOLID ROLLERS

Heavy duty machined from solid plastic rollers. Only for T Series 1/2" models and SH Series.

## DEF & FUEL SERIES :: REEL SPECIFICATIONS

### SWIVEL

- (DEF Series) Non-corrosive stainless steel 90° full flow NPT swivel for Diesel Exhaust Fluid (DEF) dispensing applications.
- (DEF Series) Swivel seals: Viton®
- (Fueling Series) Machined from solid brass 90° full-flow NPT swivel inlet for fuel dispensing applications. Electroless nickel plated steel swivel on 1" models
- (Fueling Series) Swivel seals: Nitrile

### HOSE

- DEF dispensing hose designed to convey the high-purity, aqueous urea solution DEF. Temperature Range: -40°F to +257°F
- Fuel dispensing hose designed to convey non-aromatic fuels including diesel, kerosene, fuel oil & heating oil. Temperature Range: -20°F to +190°F

### DESIGN & STRUCTURE

- Guide arm adjusts to wall, floor, vehicle & overhead positions
- Solid one piece, heavy gauge 1/4" steel base & support post for maximum stability
- 1" solid steel axle & lubricated precision bearings for smooth rotation
- (On SH Series only) Sturdy single pedestal reel features Coxreels' exclusive Super Hub™ dual axle support system
- (On T Series only) Sturdy dual pedestal reel features Coxreels' exclusive Super Hub™ triple axle support system
- (On T Series only) Stainless Steel rollers
- Controlled retraction speed up to 80% slower on EZ-COIL models
- Enclosed factory tuned & matched cartridge-style spring motor
- Non-corrosive stainless steel spring, pawl & zinc plated ratchet
- Multi-position lock ratchet mechanism secures hose at desired length

WARNING: Cancer and reproductive Harm – See page 23 for more information – www.P65Warning.ca.gov

SEE PAGE 21 FOR ADDITIONAL ACCESSORIES

3/32" Ø

# SD & SDH SERIES STATIC DISCHARGE CABLE REELS



**COXREELS®** SD and SDH Series "Static Discharge" cable reels are built heavy duty and designed for long lasting performance. They are specifically designed to be used in combustible environments where the static buildup could ignite a spark and subsequent explosion. Static discharge or grounding reels are commonly paired with fuel hose reels.

## SD SERIES

CABLE					LESS CABLE		SIZE INDEX
MODEL	FT.	O.D. W/JACKET	APRX. LBS.	<b>EZ-COIL</b> MODELS	MODEL	APRX. LBS.	
<b>GALVANIZED CABLE</b>							
<b>SD-50</b>	50	5/32"	20	<b>EZ-SD-50</b>	<b>SDL-50</b>	18	<b>1</b>
<b>SD-100</b>	100	5/32"	32	<b>EZ-SD-100</b>	<b>SDL-100</b>	28	<b>2</b>
<b>STAINLESS STEEL CABLE</b>							
<b>SD-50-1</b>	50	5/32"	20	<b>EZ-SD-50-1</b>	<b>SDL-50</b>	18	<b>1</b>
<b>SD-100-1</b>	100	5/32"	32	<b>EZ-SD-100-1</b>	<b>SDL-100</b>	28	<b>2</b>

To order EZ-Coil® equipped models less hose, please add prefix "EZ-"

## SD & SDH SERIES :: REEL SPECIFICATIONS

### SWIVEL **DISCHARGE**

- Available with 7 strand x 7 wire galvanized steel or stainless steel 3/32" cable
- High visibility orange vinyl cable cover (O.D.= 5/32" with cable cover)
- Includes cable, ball stop & 50 Amp grounding clamp

### DESIGN & STRUCTURE

- Compact static discharge cable reel available in spring rewind or direct hand crank retraction
- Commonly paired with fuel reels & used in combustible environment for grounding purposes
- Guide arm adjusts to wall, floor, vehicle & overhead positions
- Solid one piece, heavy gauge 1/4" steel base for maximum stability
- 1" solid steel axle & lubricated precision bearings for smooth rotation
- Bottom of base is not powder coated to ground reel
- Controlled retraction speed up to 80% slower on **EZ-COIL** models
- **(On SD Series only)** Enclosed factory tuned & matched cartridge-style spring motor
- **(On SD Series only)** Non corrosive stainless steel spring, pawl & zinc plated ratchet
- **(On SD Series only)** Multi-position non-sparking lock ratchet mechanism secures cable at desired length
- **(On SDH Series only)** Simple design with direct hand crank action

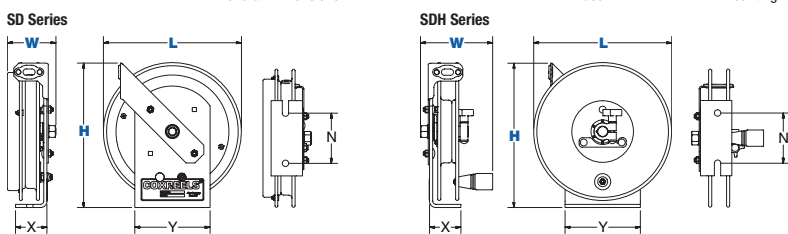
## SDH SERIES

CABLE				LESS CABLE		SIZE INDEX
MODEL	FT.	O.D. W/JACKET	APRX. LBS.	MODEL	APRX. LBS.	
<b>GALVANIZED CABLE</b>						
<b>SDH-100</b>	100	5/32"	24	-	-	<b>3</b>
<b>SDH-200</b>	200	5/32"	28	<b>SDHL-200</b>	20	<b>3</b>
<b>STAINLESS STEEL CABLE</b>						
<b>SDH-100-1</b>	100	5/32"	24	-	-	<b>3</b>
<b>SDH-200-1</b>	200	5/32"	28	<b>SDHL-200</b>	20	<b>3</b>

## REEL DIMENSIONS Technical Data Sheets Available On Website

SIZE INDEX	W	H	L	X	Y	N
<b>1</b>	3 7/8"	11 1/2"	11"	2 1/2"	6"	4"
<b>2</b>	4"	15"	14 1/2"	2 1/2"	6"	4"
<b>3</b>	5 3/4"	11 1/2"	11"	2 1/2"	6"	4"

Overall Dimensions Base Mounting Pattern



**WARNING:** Cancer and reproductive Harm – See page 23 for more information – [www.P65Warning.ca.gov](http://www.P65Warning.ca.gov)

## TOP REQUESTED UPGRADES & ACCESSORIES

SEE PAGE 21 FOR ADDITIONAL ACCESSORIES



### ORDER EZ-COIL® MODELS ON SD SERIES

EZ-Coil® is a patented controlled retraction technology offered exclusively on Coxreels' Safety Series reels. It retracts up to 80% slower than conventional reels, resulting in workplace safety, protection from injury & costly property damage.



### ORDER DOUBLE CLAMP

Heavy duty clamps made from zinc plated steel. Both clamps are rated for 50 amp. Each has a jaw opening of 1.06" and a steel spring.

### ORDER 100 AMP CLAMP

Heavy duty copper clamp designed for heavy grounding requirements. It has a jaw opening of 1.06" and a steel spring.

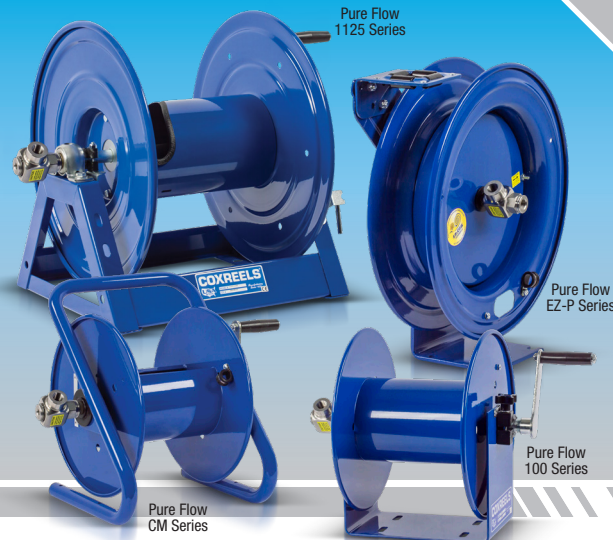


**COXREELS® Pure Flow Series** is offered in spring rewind, hand crank and motorized retractions. All Pure Flow hose reels come standard equipped with stainless steel air/fluid paths and stainless steel swivels with non-toxic, food quality grease, ensuring clean, non-contaminated, safe and reliable transfer of breathing air, potable water or other clean fluids.

## PURE FLOW SPRING DRIVEN SERIES

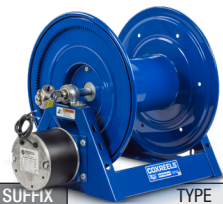
Do not exceed listed hose O.D. to obtain maximum length.

LESS HOSE						SIZE INDEX
MODEL	I.D.	O.D.	FT.	PSI	APRX. LBS.	
<b>EZ-P SERIES</b> Models with hose are for air or water service with a maximum temperature 150°F. Models less hose can be used for air, water or oil.						
<b>EZ-P-BLL-350</b>	3/8"	5/8"	50	300	43	<b>1</b>
<b>EZ-P-BHL-350</b>	3/8"	5/8"	50	6,000	43	<b>1</b>
<b>EZ-T SERIES</b> Models with hose are for air or water service with a maximum temperature 150°F. Models less hose can be used for air, water or oil.						
<b>EZ-TBLL-3100</b>	3/8"	5/8"	100	300	85	<b>2</b>
<b>EZ-TBHL-3100</b>	3/8"	5/8"	100	6,000	85	<b>2</b>



## PURE FLOW HAND CRANK & MOTORIZED SERIES

LESS HOSE										SIZE INDEX
MODEL	STANDARD CAP			OPTIONAL CAP. Reducer required			INLET SWIVEL & OUTLET RISER	PSI	APRX. LBS.	
	I.D.	O.D.	FT.	I.D.	O.D.	FT.				
<b>100 SERIES - COMPACT HAND CRANK</b>										
<b>112P-3-8</b>	3/8"	5/8"	100	-	-	-	-	4,000	19	<b>3</b>
<b>CM SERIES - COMPACT HAND CRANK</b>										
<b>112P-3-8-CM</b>	3/8"	5/8"	100	-	-	-	-	4,000	18	<b>3</b>
<b>1125 SERIES</b>										
<b>1125P-4-6</b>	1/2"	7/8"	100	3/8"	3/4"	140	1/2" F NPT	6,000	36	<b>4</b>
<b>1125P-4-8</b>	1/2"	7/8"	150	3/8"	3/4"	200	1/2" F NPT	6,000	37	<b>5</b>
<b>1125P-4-12</b>	1/2"	7/8"	200	3/8"	3/4"	300	1/2" F NPT	6,000	39	<b>6</b>



### MOTORIZED THE REWIND OF YOUR REEL

Featuring a direct gear drive, the 1125 Series drive system is more dependable and maintenance free than a chain and sprocket. A solid steel ring gear is directly welded to the side of the disc for added rigidity and strength. Choose from several motor options shown in the table below.

SEE PAGE 27 FOR ADDITIONAL MOTOR ACCESSORIES

SUFFIX	TYPE	DESCRIPTION	ADD ON LBS
<b>A</b>	AIR - 4 VANE	ALUMINUM BODY AIR MOTOR	8
<b>C</b>	FRONT HAND CRANK	BEVEL GEARED CRANK	3
<b>E</b>	12 V DC, 1/8 HP	REVERSIBLE	13
<b>ED</b>	12 V DC, 1/2 HP EXP.	EXPLOSION PROOF, REVERSIBLE	26
<b>EF</b>	24 V DC, 1/8 HP	REVERSIBLE	13
<b>EB</b>	24 V DC, 1/2 HP EXP.	EXPLOSION PROOF, REVERSIBLE	26
<b>EA</b>	115 V AC, 1/2 HP EXP.	EXPLOSION PROOF REVERSIBLE AC RECTIFIED	26
<b>H</b>	HYDRAULIC	END PORTED 9/16-18 UNF	6

## REEL DIMENSIONS

Technical Data Sheets Available On Website

SIZE INDEX	W		H		L	X	Y		M	N	Ø	Dw
	CRANK / ELEC / SPRING	AIR / HYD.	CRANK / SPRING	MOTOR			CRANK / SPRING	MOTOR				
<b>1</b>	7 1/8"	-	18 5/8"	-	17 1/8"	6"	6"	-	4"	5"	11 1/8"	3 3/4"
<b>2</b>	9 3/8"	-	25 1/2"	-	24"	8"	9"	-	7"	8"	15 3/4"	4 1/2"
<b>3</b>	18 1/4"	-	13"	-	12"	9 1/2"	6"	-	5 1/2"	3"	5 1/2"	8"
<b>4</b>	19 3/4"	17"	18 5/8"	19 1/4"	17 5/8"	11 3/8"	15 3/8"	16"	9 7/16"	10"	6 1/4"	6"
<b>5</b>	21 3/4"	19"	18 5/8"	19 1/4"	17 5/8"	13 3/8"	15 3/8"	16"	11 7/16"	10"	6 1/4"	8"
<b>6</b>	25 3/4"	23"	18 5/8"	19 1/4"	17 5/8"	17 3/8"	15 3/8"	16"	15 7/16"	10"	6 1/4"	12"

Overall Dimensions      Base      Mounting Pattern      Drum

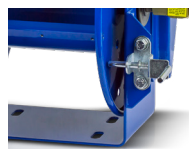
## TOP REQUESTED UPGRADES & ACCESSORIES

SEE PAGE 21 FOR ADDITIONAL ACCESSORIES



### UPGRADE TO SOLID ROLLERS

Heavy duty machined from solid plastic rollers. Only for Spring Driven models



### ADD PINLOCK

The spring-loaded lock pin assembly is designed to lock & secure the reel, even in mobile conditions over rough terrain. For 100 and 1125 Series only.

## PURE FLOW SERIES :: REEL SPECIFICATIONS

### SWIVEL

- Non-corrosive stainless steel air/fluid path with machined from high quality stainless steel 90° full-flow NPT swivel inlet
- Swivel Seals: NITRILE Non-Toxic Food Grade Grease

### DESIGN & STRUCTURE

- Safely store respiratory air hose lines for low or high pressure breathing air systems
- Safely store potable water hose lines for drinking water systems
- Safely store any hose requiring sanitized & non-contaminated fluid transfer application
- **P Series / T Series** - Guide arm adjusts to wall, floor, vehicle, and overhead positions. Solid one piece, heavy gauge 1/4" steel base, and support post for maximum stability. 1" solid steel axle, and lubricated precision bearings for smooth rotation. Multi-position lock ratchet mechanism secures hose at desired length. Controlled retraction speed up to 80% slower.
- **100 Series** - Open drum design for no hassle hose wrap. Solid one piece, heavy gauge steel "U" shaped frame. Adjustable tension brake to prevent "free-wheeling". Direct hand crank rewind.
- **CM Series** - High quality one piece 1" steel tube frame structure. Hose control bar prevents hose from slipping off the discs. Base has holes for temporary or permanent installation. Adjustable tension brake. Direct hand crank rewind.
- **1125 Series** - All welded steel "A" frame construction for superior reel structure. Exclusive low profile riser and open drum slot design for flat smooth hose wrap. Permanently lubricated self-aligning pillow block bearings for trouble free and smooth rotation. Long handled locking pin to secure reel from rotation (On hand crank models). Solid steel direct hand crank with smooth round handle. Reliable direct gear drive on motor driven models providing quiet & smooth retraction - NO CHAIN.

WARNING: Cancer and reproductive Harm - See page 23 for more information - www.P65Warning.ca.gov



1/2" - 1" I.D.

# STAINLESS STEEL HAND CRANK & MOTORIZED HOSE REELS **SS 100, 1125 & 1175 SERIES**

**COXREELS® SS Series** "Stainless Steel" hand crank hose reels have similar features to their related series, but are constructed of high quality electro-polished or unpolished as manufactured stainless steel with stainless steel fluid paths. They offer clean, non-corrosive performance in applications that require it, such as food and chemical processing, marinas, and anywhere that rust, corrosion and contamination thrive.

## SS SERIES - ALL REELS SUPPLIED LESS HOSE

LESS HOSE							SIZE INDEX			
MODEL	I.D.	O.D.	FT.	PSI	APRX. LBS.					
<b>SS100 SERIES</b> - Hand Crank - SS100 Series is only available in SS finish.										
<b>112-4-75-SS</b>	1/2"	7/8"	75	4,000	21	<b>1</b>				
<b>117-4-225-SS</b>	1/2"	7/8"	225	4,000	31	<b>2</b>				
<b>117-5-100-SS</b>	3/4"	1 1/4"	100	4,000	36	<b>3</b>				
LESS HOSE							SIZE INDEX			
MODEL	STANDARD CAP		OPTIONAL CAP. Reducer required			INLET SWIVEL & OUTLET RISER		PSI	APRX. LBS.	
	I.D.	O.D.	FT.	I.D.	O.D.		FT.			
<b>SS1125 SERIES</b> - Hand Crank & Motor Driven										
<b>1125-4-100-X</b>	1/2"	7/8"	100	3/8"	3/4"	140	1/2" F NPT	3,000	36	<b>4</b>
<b>1125-4-200-X</b>	1/2"	7/8"	200	3/8"	3/4"	300	1/2" F NPT	3,000	39	<b>5</b>
<b>1125-5-100-X</b>	3/4"	1 1/4"	100	1/2"	7/8"	200	3/4" F NPT	3,000	42	<b>6</b>
<b>1125-5-200-X</b>	3/4"	1 1/4"	200	1/2"	7/8"	450	3/4" F NPT	3,000	55	<b>7</b>
<b>SS1175 SERIES</b> - Hand Crank & Motor Driven										
<b>1175-6-100-X</b>	1"	1 7/16"	100	3/4"	1 1/4"	150	1" F NPT	3,000	70	<b>8</b>
<b>1175-6-200-X</b>	1"	1 7/16"	200	3/4"	1 1/4"	300	1" F NPT	3,000	83	<b>9</b>

→ Designate either SP or SS for choice of finish



### MOTORIZED THE REWIND OF YOUR REEL

Featuring a direct gear drive, the 1125 Series drive system is more dependable and maintenance free. Featuring a lubricated chain and a zinc plated steel sprocket, the 1175 Series drive system provides a smooth, continuous rewind on motorized reels. Choose from several motor options shown in the table below.

SEE PAGE 27 FOR ADDITIONAL MOTOR ACCESSORIES

SUFFIX	TYPE	DESCRIPTION	ADD ON APRX. LBS
<b>A</b>	AIR - 4 VANE	ALUMINUM BODY AIR MOTOR	8
<b>AB</b>	AIR - 6 VANE	CAST IRON AIR MOTOR	8
<b>C</b>	FRONT HAND CRANK	BEVEL GEARED CRANK	3
<b>E</b>	12 V DC, 1/3 HP	REVERSIBLE	13
<b>ED</b>	12 V DC, 1/2 HP EXP.	EXPLOSION PROOF, REVERSIBLE	26
<b>EF</b>	24 V DC, 1/3 HP	REVERSIBLE	13
<b>EB</b>	24 V DC, 1/2 HP EXP.	EXPLOSION PROOF, REVERSIBLE	26
<b>EA</b>	115 V AC, 1/2 HP EXP.	EXPLOSION PROOF REVERSIBLE AC RECTIFIED	26
<b>EJ</b>	230 V AC, 1/2 HP EXP.	EXPLOSION PROOF REVERSIBLE AC RECTIFIED	26
<b>H</b>	HYDRAULIC	END PORTED 9/16-18 UNF	6

## REEL DIMENSIONS Technical Data Sheets Available On Website

SIZE INDEX	W			H		L	X	Y		Ø	Dw
	CRANK	ELEC.	AIR / HYD.	CRANK	ELEC.			CRANK	ELEC.		
<b>1</b>	22 3/4"	-	-	13"	-	12"	14"	6"	-	5 1/2"	12 1/2"
<b>2</b>	22 3/4"	-	-	18"	-	17"	14"	6"	-	5 1/2"	12 1/2"
<b>3</b>	23 1/4"	-	-	18"	-	17"	14"	6"	-	5 1/2"	12 1/2"
<b>4</b>	19 1/2"	19 3/4"	17"	18 3/4"	19 1/4"	17 5/8"	11 3/8"	15 3/8"	16"	6 1/4"	6"
<b>5</b>	25 1/2"	25 3/4"	23"	18 3/4"	19 1/4"	17 5/8"	17 3/8"	15 3/8"	16"	6 1/4"	12"
<b>6</b>	26 3/4"	26"	23 3/8"	18 3/4"	19 1/4"	17 5/8"	17 3/8"	15 3/8"	16"	6 1/4"	12"
<b>7</b>	38 3/4"	38"	35 3/8"	18 3/4"	19 1/4"	17 5/8"	29 3/8"	15 3/8"	16"	6 1/4"	24"
<b>8</b>	28 1/8"	26"	24 1/2"	26 1/8"	26 1/8"	24"	17"	20 1/8"	20 1/8"	10 1/2"	11 1/2"
<b>9</b>	36 5/8"	34 1/2"	33"	26 1/8"	26 1/8"	24"	25 1/2"	20 1/8"	20 1/8"	10 1/2"	20"

Overall Dimensions

Base

Drum

## TOP REQUESTED UPGRADES & ACCESSORIES

SEE PAGE 21 FOR ADDITIONAL ACCESSORIES



### UPGRADE TO CAPTIVE BEARING SWIVEL

**STAINLESS STEEL CAPTIVE BEARING SWIVEL:** Featuring heavy duty ball bearings for smooth rotation and increased side load capabilities, the stainless steel swivel is machined from solid 304 stainless steel for increased corrosion resistance.



1125-4-200-SP with "SP" Finish

112-4-75-SS with "SS" Finish

## SS SERIES - HAND CRANK/ MOTORIZED :: REEL SPECIFICATIONS

### SWIVEL

- Non-corrosive machined from high quality stainless steel 90° full-flow NPT swivel inlet
- Swivel Seals: NITRILE Non-Toxic Food Grade Grease

### DESIGN & STRUCTURE

- Choice of stainless steel finish includes:
  - "SP" Standard unpolished "as manufactured" stainless steel finish
  - "SS" Electro-polished stainless steel finish
- **100 Series** - Open drum design for no hassle hose wrap. Solid one piece, heavy gauge stainless steel "U" shaped frame. Adjustable tension brake to prevent "free-wheeling". Direct hand crank rewind.
- **1125 & 1175 Series** - All welded stainless steel "A" frame construction for superior reel structure. Exclusive low profile riser and open drum slot design for flat smooth hose wrap. Permanently lubricated self-aligning pillow block bearings for trouble free and smooth rotation. Long handled locking pin to secure reel from rotation (On hand crank models). Solid steel direct hand crank with smooth round handle.
- **1125 Series** - Reliable direct gear drive on motor driven models providing quiet & smooth retraction - NO CHAIN.
- **1175 Series** - Reliable chain & sprocket drive on motor driven models.

WARNING: Cancer and reproductive Harm - See page 23 for more information - www.P65Warning.ca.gov



www.coxreels.com • 1.800.COX.REEL

MOTORIZED  
HAND CRANK

# 1125 SERIES

## HAND CRANK & MOTOR DRIVEN HOSE REELS



**COXREELS® 1125 Series** hand crank and motorized hose reels have the features demanded by industry professionals. The industry preferred design features a sturdy one piece all welded "A" frame base, low profile outlet riser and open drum slot design provides a non-crimping, flat smooth hose wrap.

### 1125 SERIES - ALL REELS SUPPLIED LESS HOSE

MODEL	STANDARD CAP			OPTIONAL CAP. Reducer required			INLET SWIVEL & OUTLET RISER	PSI	SIZE INDEX
	I.D.	O.D.	FT.	I.D.	O.D.	FT.			
1125-4-100	1/2"	7/8"	100	3/8"	3/4"	140	1/2" F NPT	3,000	1
1125-4-200	1/2"	7/8"	200	3/8"	3/4"	300	1/2" F NPT	3,000	2
1125-4-500	1/2"	7/8"	500	3/8"	3/4"	700	1/2" F NPT	3,000	5
1125-5-50	3/4"	1 1/4"	50	1/2"	7/8"	100	3/4" F NPT	3,000	6
1125-5-100	3/4"	1 1/4"	100	1/2"	7/8"	200	3/4" F NPT	3,000	7
1125-5-200	3/4"	1 1/4"	200	1/2"	7/8"	450	3/4" F NPT	3,000	9
1125-5-250	3/4"	1 1/4"	250	1/2"	7/8"	500	3/4" F NPT	3,000	10
1125-6-50	1"	1 7/16"	50	3/4"	1 1/4"	75	1" F NPT	3,000	12
1125-6-100	1"	1 7/16"	100	3/4"	1 1/4"	150	1" F NPT	3,000	14

### 1125 SERIES :: REEL SPECIFICATIONS

#### SWIVEL

- Machined solid brass 90° full-flow NPT swivel (Nickel plated steel swivel on 1" models)
- Swivel Seals: NITRILE  
AFLAS on 1" steel models  
NITRILE on 1" stainless fluid path models
- External 90° full-flow NPT swivel with electroless nickel plated steel inlet (on high pressure HP & 1" steel models)
- Swivel Seals: AFLAS (on high pressure HP prefix models)

#### DESIGN & STRUCTURE

- All welded steel "A" frame construction for superior reel structure
- Exclusive low profile outlet riser & open drum slot design for flat smooth hose wrap
- Permanently lubricated self-aligning pillow block bearings for trouble-free & smooth rotation
- Adjustable tension brake to prevent "free-wheeling" during operation
- Long-handled locking pin to secure reel from rotation during transport or storage
- Solid steel direct hand crank with smooth round handle
- Reliable direct gear drive on motor driven models providing quiet & smooth retraction - **NO CHAIN**

**WARNING:** Cancer and reproductive Harm - See page 23 for more information - [www.P65Warning.ca.gov](http://www.P65Warning.ca.gov)

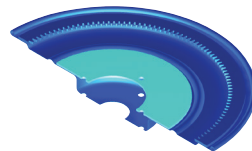
### TOP REQUESTED UPGRADES & ACCESSORIES

SEE PAGE 21 FOR ADDITIONAL ACCESSORIES



### 5,000 PSI HIGH PRESSURE MODELS

Upgrade to 5000 PSI with a steel ball bearing swivel. Machined from high strength steel and nickel plated for corrosion resistance, the ball bearing swivel features maximum flow and enhanced load bearing capabilities. Swivel Seals: AFLAS



### STRENGTHEN DRUM WITH BRAWNY OPTION

10 Gauge plates welded into each disc to keep them from bowing. Prevents deformations & eventual crushing of the drum that can be caused by hose pressure. The center drum has been thickened from 16GA to 14GA.



### UPGRADE TO STAINLESS STEEL

**STAINLESS STEEL SWIVEL / STAINLESS STEEL CAPTIVE BEARING SWIVEL:** the stainless steel swivel is machined from solid 304 stainless steel for increased corrosion resistance.

**STAINLESS STEEL FLUID PATH:** This option uses the same swivel as described in the stainless steel swivel upgrade and couples it to a upgraded 304 stainless steel plumbing axle to improve the corrosion resistance of the entire fluid path.



### ADD PINLOCK TO MOTORIZED MODELS

The spring-loaded lock pin assembly is designed to lock & secure the reel, even in mobile conditions over rough terrain.

### REEL DIMENSIONS

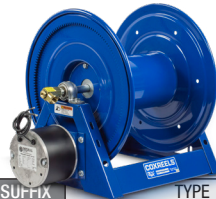
Technical Data Sheets Available On Website

SIZE INDEX	W			H		L	X	Y		Ø	Dw
	CRANK	ELEC.	AIR / HYD.	CRANK	ELEC.			CRANK	ELEC.		
1	19 1/2"	19 3/4"	17"	18 3/4"	19 1/4"	17 5/8"	11 3/8"	15 3/8"	16"	6 1/4"	6"
2	25 1/2"	25 3/4"	23"	18 3/4"	19 1/4"	17 5/8"	17 3/8"	15 3/8"	16"	6 1/4"	12"
5	41 1/2"	41 3/4"	39"	18 3/4"	19 1/4"	17 5/8"	33 3/8"	15 3/8"	16"	6 1/4"	28"
6	20 3/4"	20"	17 3/8"	18 3/4"	19 1/4"	17 5/8"	11 3/8"	15 3/8"	16"	6 1/4"	6"
7	26 3/4"	26"	23 3/8"	18 3/4"	19 1/4"	17 5/8"	17 3/8"	15 3/8"	16"	6 1/4"	12"
9	38 3/4"	38"	35 3/8"	18 3/4"	19 1/4"	17 5/8"	29 3/8"	15 3/8"	16"	6 1/4"	24"
10	42 3/4"	42"	39 3/8"	18 3/4"	19 1/4"	17 5/8"	33 3/8"	15 3/8"	16"	6 1/4"	28"
12	32"	29 7/8"	28 1/4"	18 1/2"	19 1/8"	17 5/8"	20 7/8"	15 3/8"	16"	8 1/4"	15 1/2"
14	44 1/2"	42 3/8"	40 3/4"	18 1/2"	19 1/8"	17 5/8"	33 3/8"	15 3/8"	16"	8 1/4"	28"

Overall Dimensions

Base

Drum



### MOTORIZED THE REWIND OF YOUR REEL

Featuring a direct gear drive, the 1125 Series drive system is more dependable and maintenance free than a chain and sprocket. A solid steel ring gear is directly welded to the side of the disc for added rigidity and strength. Choose from several motor options shown in the table below.

SEE PAGE 22 FOR ADDITIONAL MOTOR ACCESSORIES

SUFFIX	TYPE	DESCRIPTION	ADD ON LBS
A	AIR - 4 VANE	ALUMINUM BODY AIR MOTOR	8
AB	AIR - 6 VANE	CAST IRON AIR MOTOR	8
C	FRONT HAND CRANK	BEVEL GEARED CRANK	3
E	12 V DC, 1/3 HP	REVERSIBLE	13
ED	12 V DC, 1/2 HP EXP.	EXPLOSION PROOF, REVERSIBLE	26
EF	24 V DC, 1/3 HP	REVERSIBLE	13
EB	24 V DC, 1/2 HP EXP.	EXPLOSION PROOF, REVERSIBLE	26
EA	115 V AC, 1/2 HP EXP.	EXPLOSION PROOF REVERSIBLE AC RECTIFIED	26
EJ	230 V AC, 1/2 HP EXP.	EXPLOSION PROOF REVERSIBLE AC RECTIFIED	26
H	HYDRAULIC	END PORTED 9/16-18 UNF	6







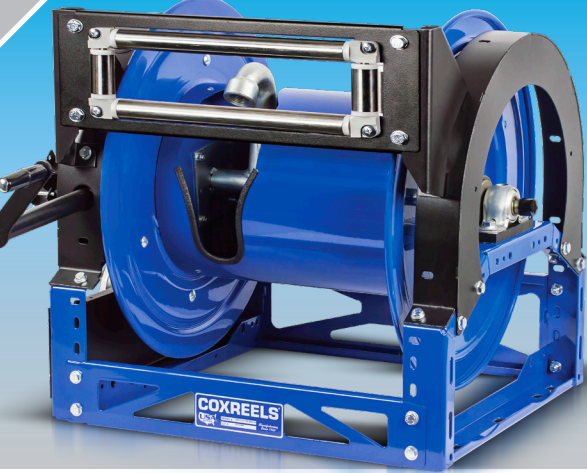




1" - 1 1/2" I.D.

# 1600 SERIES

HAND CRANK & MOTORIZED HYBRID FRAME HOSE REELS



1600 Series with optional universal bracket kit, 4-way roller bracket, crank handler holster & bevel gear crank

**COXREELS® 1600 Series features the most versatile symmetric reel design in the market today.** This feature –rich reel series is the most versatile in the marketplace and features nearly endless component configurations on a robust platform for any conceivable application. Targeted for the tough demands of customers requiring various dimensional choices, the series offers flexible size envelopes for any given hose capacity. The 1600 series hybrid frame offers unique accessories and upgrades which allow for application tailoring resulting in enhanced performance and usability.

## 1600 SERIES

- ALL REELS SUPPLIED LESS HOSE

MODEL	Hose Cap. 1" I.D.	Optional Hose Cap. 3/4" I.D.	DIMENSIONS							APRX. LBS	
			DW DRUM WIDTH	L DISC SIZE	W			H	X		Y
					CRANK	ELEC.	AIR/HYD.				
<b>1600 SERIES - 4000 PSI</b>											
1660-0820	50'	60'	8"	20"	237/8"	215/8"	203/8"	213/4"	15"	201/4"	54
1660-1520	100'	150'	15.5"	20"	313/8"	291/8"	277/8"	213/4"	221/2"	201/4"	68
1660-0924			9.5"	24"	353/8"	231/8"	217/8"	251/4"	161/2"	231/4"	72
1660-2820			28"	20"	437/8"	415/8"	403/8"	213/4"	35"	201/4"	94
1660-2024	200'	275'	20"	24"	357/8"	335/8"	323/8"	251/4"	27"	231/4"	91
1660-1128			11.5"	28"	273/8"	251/8"	237/8"	291/4"	181/2"	261/4"	88
1660-2824	300'	450'	28"	24"	437/8"	415/8"	403/8"	251/4"	35"	231/4"	107
1660-2228	400'	550'	22"	28"	377/8"	355/8"	343/8"	291/4"	29"	261/4"	112
<b>1600 SERIES - 1500 PSI</b>											
MODEL	Hose Cap. 1 1/2" I.D.	Optional Hose Cap. 1 1/4" I.D.	DW DRUM WIDTH	L DISC SIZE	CRANK	ELEC.	AIR/HYD.	H	X	Y	APRX. LBS
1680-1520			15.5"	20"	287/8"	291/8"	277/8"	213/4"	221/2"	201/4"	68
1680-1124	50'	55'	11.5"	24"	213/8"	215/8"	203/8"	291/4"	15"	261/4"	73
1680-0828			8"	28"	247/8"	251/8"	237/10"	251/4"	181/2"	231/4"	82
1680-2024	100'	130'	20"	24"	333/8"	335/8"	323/8"	251/4"	27"	231/4"	91
1680-1328			13.5"	28"	267/8"	271/8"	257/10"	291/4"	201/2"	261/4"	92
1680-3324	200'	200'	33"	24"	463/8"	465/8"	453/8"	251/4"	40"	231/4"	117
1680-2428			24"	28"	373/8"	375/8"	363/8"	291/4"	31"	261/4"	114

### 1600 SERIES :: REEL SPECIFICATIONS

#### SWIVEL

- **1660 models** - Nickel plated steel 90° full-flow NPT swivel inlet
- **1680 models** - In-line nickel plated steel full-flow NPT swivel inlet
- Swivel Seals: NITRILE

#### DESIGN & STRUCTURE

- All welded hybrid frame with added bolts
- Exclusive low profile outlet riser & open drum slot design for flat smooth hose wrap
- Permanently lubricated self-aligning pillow block bearings for trouble-free & smooth rotation
- Adjustable tension brake to prevent "free-wheeling" during operation
- **(On hand crank models)** Long-handled locking pin to secure reel from rotation during transport or storage
- Reliable chain & sprocket drive on motor driven models
- Solid steel direct hand crank with smooth round handle
- All metal bevel crank and gear construction



#### MOTORIZED THE REWIND OF YOUR REEL

Featuring a lubricated chain and a zinc plated steel sprocket, the 1600 Series drive system provides a smooth, continuous rewind on motorized reels. Choose from several motor options shown in the table below.

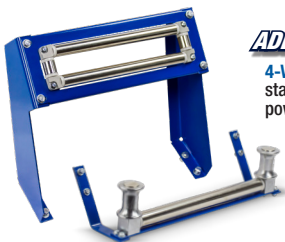
SEE PAGE 22 FOR ADDITIONAL MOTOR ACCESSORIES

SUFFIX	TYPE	DESCRIPTION	ADD ON LBS
<b>A</b>	AIR - 4 VANE	ALUMINUM BODY AIR MOTOR	8
<b>AB</b>	AIR - 6 VANE	CAST IRON AIR MOTOR	8
<b>C</b>	FRONT HAND CRANK	BEVEL GEARED CRANK	3
<b>E</b>	12 V DC, 1/3 HP	REVERSIBLE	13
<b>ED</b>	12 V DC, 1/2 HP EXP.	EXPLOSION PROOF, REVERSIBLE	26
<b>EF</b>	24 V DC, 1/3 HP	REVERSIBLE	13
<b>EB</b>	24 V DC, 1/2 HP EXP.	EXPLOSION PROOF, REVERSIBLE	26
<b>EA</b>	115 V AC, 1/2 HP EXP.	EXPLOSION PROOF REVERSIBLE AC RECTIFIED	26
<b>EJ</b>	230 V AC, 1/2 HP EXP.	EXPLOSION PROOF REVERSIBLE AC RECTIFIED	26
<b>H</b>	HYDRAULIC	END PORTED 3/16-18 UNF	6

**WARNING:** Cancer and reproductive Harm – See page 23 for more information – [www.P65Warning.ca.gov](http://www.P65Warning.ca.gov)

### TOP REQUESTED UPGRADES & ACCESSORIES

SEE PAGE 21 FOR ADDITIONAL ACCESSORIES



#### ADD ROLLERS

**4-WAY ROLLERS:** 4-way enclosed pinch-proof stainless steel rollers are 1 in diameter supported by powder coated steel brackets.

**3-WAY ROLLERS:** 3-way open spool roller assembly with 1.5 chrome-plated machined steel spools & 1.5 stainless steel tubing bottom roller & powder coated steel brackets.



#### ADD UNIVERSAL ROLLERS

**4-WAY ROLLERS:** 4-way enclosed pinch-proof stainless steel rollers are 1" in diameter.

**3-WAY ROLLERS:** 3-way open spool roller assembly with 1.5" chrome-plated machined steel spools and 1.5" stainless steel bottom roller.

Rollers mounted on universal bracket with 4 various positions 0°, 30°, 60°, 90°. Made from steel, powder coat black.

#### UPGRADE TO STAINLESS STEEL

**STAINLESS STEEL CAPTIVE BEARING SWIVEL:** Featuring heavy duty ball bearings for smooth rotation and increased side load capabilities, the stainless steel swivel is machined from solid 304 stainless steel for increased corrosion resistance.

**STAINLESS STEEL FLUID PATH:** This options uses the same swivel as described in the stainless steel swivel upgrade and couples it to an upgraded 304 stainless steel plumbing axle to improve the corrosion resistance of the entire fluid path.

#### IDLER GEARS AVAILABLE

Reduce drum speed & increase torque. Available in three sizes : 1:2 ratio, 1:3 ratio, and 1:4 ratio, they are factory installed on the motor kits.



**COXREELS® 1275 Series "Dual Hose" hand crank or motorized hose reels are designed for large capacity applications.** This series features dual plumbing with two swivel inlets and two low profile outlets that compliment the open drum slot and provide a non-crimping, flat smooth hose wrap. The industry preferred one piece all welded "A" frame design adds rigidity and strength while the positive gear drive rewind assures consistent trouble-free performance.

## 1275 SERIES

- ALL REELS SUPPLIED LESS HOSE

MODEL	LESS HOSE						INLET SWIVEL & OUTLET RISER	PSI	APRX. LBS.	SIZE INDEX
	STANDARD CAP			OPTIONAL CAP. Reducer required						
	I.D.	O.D.	FT.	I.D.	O.D.	FT.				
<b>1275-4-50-X</b>	1/2"	7/8"	2/50	3/8"	3/4"	2/70	1/2" F NPT	3,000	40	<b>1</b>
<b>1275-4-100-X</b>	1/2"	7/8"	2/100	3/8"	3/4"	2/140	1/2" F NPT	3,000	42	<b>2</b>
<b>1275-4-150-X</b>	1/2"	7/8"	2/150	3/8"	3/4"	2/200	1/2" F NPT	3,000	47	<b>3</b>
<b>1275-4-200-X</b>	1/2"	7/8"	2/200	3/8"	3/4"	2/300	1/2" F NPT	3,000	56	<b>4</b>
<b>1275-6-50-X</b>	1"	1 1/16"	2/50	3/4"	1 1/4"	2/60	1" F NPT	3,000	63	<b>5</b>
<b>1275-6-100-X</b>	1"	1 1/16"	2/100	3/4"	1 1/4"	2/155	1" F NPT	3,000	74	<b>6</b>
<b>1275-6-150-X</b>	1"	1 1/16"	2/150	3/4"	1 1/4"	2/200	1" F NPT	3,000	88	<b>7</b>



## REEL DIMENSIONS Technical Data Sheets Available On Website

SIZE INDEX	W			H		L	X	Y		Ø	Dw
	CRANK	ELEC.	AIR / HYD.	CRANK	ELEC.						
	CRANK		ELEC.								
<b>1</b>	18 7/8"	22 5/8"	19 7/8"	18 5/8"	19 1/8"	17 5/8"	13 3/8"	15 3/8"	16"	6 1/4"	8"
<b>2</b>	22 7/8"	26 5/8"	23 7/8"	18 5/8"	19 1/8"	17 5/8"	17 3/8"	15 3/8"	16"	6 1/4"	12"
<b>3</b>	28 7/8"	32 5/8"	29 7/8"	18 5/8"	19 1/8"	17 5/8"	23 3/8"	15 3/8"	16"	6 1/4"	18"
<b>4</b>	34 7/8"	38 5/8"	35 7/8"	18 5/8"	19 1/8"	17 5/8"	29 3/8"	15 3/8"	16"	6 1/4"	24"
<b>5</b>	29"	30 5/8"	27 3/4"	22 7/8"	22 7/8"	20"	19"	18 7/8"	18 7/8"	10 1/2"	13 1/2"
<b>6</b>	35 5/8"	37"	34 1/4"	26 1/8"	26 1/8"	24"	25 1/2"	20 3/8"	20 3/8"	10 1/2"	20"
<b>7</b>	35 5/8"	37"	34 1/4"	30 1/16"	30 1/16"	28"	25 1/2"	22 9/16"	22 9/16"	10 1/2"	20"

Overall Dimensions

Base

Drum



### SUFFIX OPTIONS FOR YOUR REEL

These models are not available in direct crank models. Featuring a direct gear drive, the 1275 Series drive system is more dependable and maintenance free than a chain and sprocket. A solid steel ring gear is directly welded to the side of the disc for added rigidity and strength. Select from the options below to substitute the "X" with.

SEE PAGE 22 FOR ADDITIONAL MOTOR ACCESSORIES

SUFFIX	TYPE	DESCRIPTION	ADD ON LBS
<b>A</b>	AIR - 4 VANE	ALUMINUM BODY AIR MOTOR	8
<b>C</b>	FRONT HAND CRANK	BEVEL GEARED CRANK	3
<b>E</b>	12 V DC, 1/3 HP	REVERSIBLE	13
<b>ED</b>	12 V DC, 1/2 HP EXP.	EXPLOSION PROOF, REVERSIBLE	26
<b>EF</b>	24 V DC, 1/3 HP	REVERSIBLE	13
<b>EB</b>	24 V DC, 1/2 HP EXP.	EXPLOSION PROOF, REVERSIBLE	26
<b>EA</b>	115 V AC, 1/2 HP EXP.	EXPLOSION PROOF REVERSIBLE AC RECTIFIED	26
<b>EJ</b>	230 V AC, 1/2 HP EXP.	EXPLOSION PROOF REVERSIBLE AC RECTIFIED	26
<b>H</b>	HYDRAULIC	END PORTED 9/16-18 UNF	6

## 1275 SERIES :: REEL SPECIFICATIONS

### SWIVEL

- Two machined from solid brass 90° full-flow NPT swivel inlets (one on each side of the reel)
- Swivel Seals: NITRILE
- Electroless nickel plated steel swivel on 1" models

### DESIGN & STRUCTURE

- All welded steel "A" frame construction for superior reel structure
- Two low profile outlet risers & open drum slot design for dual hose applications
- Permanently lubricated self-aligning pillow block bearings for trouble-free & smooth rotation
- Bevel gear hand crank with removable handle for compact storage
- Reliable direct gear drive on motor driven models - **NO CHAIN**
- See Motor Options Chart

WARNING: Cancer and reproductive Harm – See page 23 for more information – [www.P65Warning.ca.gov](http://www.P65Warning.ca.gov)



## TOP REQUESTED UPGRADES & ACCESSORIES

SEE PAGE 21 FOR ADDITIONAL ACCESSORIES



### ADD 4-WAY ROLLERS

4-way enclosed pinch-proof stainless steel rollers are 1 in diameter supported by powder coated steel brackets. Weight: Add 10 lbs. to reel weight.



### ADD 3-WAY ROLLERS

3-way open spool roller assembly with 1.5 chrome-plated machined steel spools & 1.5 stainless steel tubing bottom roller & powder coated steel brackets. Weight: Add 14 lbs. to reel weight.



### UPGRADE TO STAINLESS STEEL

**STAINLESS STEEL SWIVEL / STAINLESS STEEL CAPTIVE BEARING SWIVEL:** the stainless steel swivel is machined from solid 304 stainless steel for increased corrosion resistance.

**STAINLESS STEEL FLUID PATH:** This options uses the same swivel as described in the stainless steel swivel upgrade and couples it to a upgraded 304 stainless steel plumbing axle to improve the corrosion resistance of the entire fluid path.



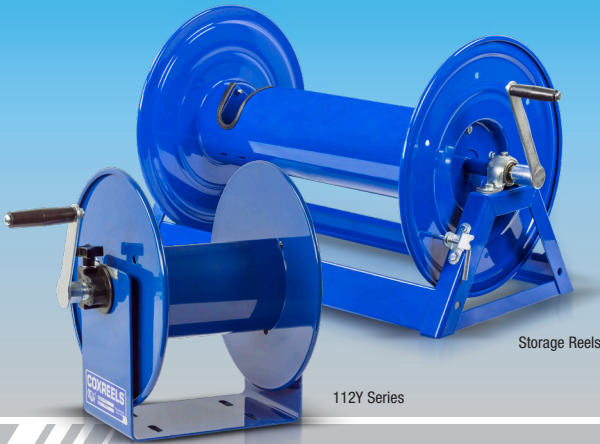
### ADD PINLOCK TO MOTORIZED MODELS

The spring-loaded lock pin assembly is designed to lock & secure the reel, even in mobile conditions over rough terrain.



# 112Y SERIES COMPACT HAND CRANK HOSE, CORD OR CABLE STORAGE REELS

## STORAGE REELS REELS TO MANAGE ALL THAT CAN BE WRAPPED



Storage Reels

112Y Series

**COXREELS® 112Y Series hand crank hose reels are lightweight, compact, versatile reels to store and maintain your hose or cord. Save time and effort while increasing the safety of your work environment. The standard 112Y reels feature a sturdy "U" shaped frame and all steel construction make this one tough little reel.**

### 112Y SERIES

MODEL	CABLE I.D.*				HOSE I.D.		PSI	APRX. LBS.	SIZE INDEX
	8/3	10/3	12/3	16/3	3/8"	1/2"			
<b>112Y-4</b>	40	75	150	300	50	30	4,000	10	<b>1</b>
<b>112Y-8</b>	80	135	300	*	100	55	4,000	14	<b>2</b>
<b>112Y-12</b>	150	225	*	*	150	75	4,000	20	<b>3</b>

\*Cable length based on SJ cord type

**COXREELS® Storage hand crank and motorized reels have the features demanded by industry professionals.** These features include a CNC robotically heavy duty spun and ribbed discs with rolled edges for added strength, safety and durability and a sturdy all-welded "A" frame built to efficiently handle the most demanding storage tasks on either stationary or mobile units. These innovative models were selected from Coxreels standard series to handle long length of various materials including but not limited to hose, collapsible hose, power cord, cable, rope, wire, barbed wire, tape, and chain.

Not all storage reels are listed, please consult factory for more models.

### 112Y SERIES & STORAGE REELS :: REEL SPECIFICATIONS

#### 112Y OPEN PORT

- Professional grade, compact & lightweight hand crank reels to store & maintain hose, cord, cable, wire, rope, tape, chain & more.
- Open drum design for no hassle hose wrap
- Open port for easy pass through for any type of hose, cord or cable
- Hose, cord or cable not included.

#### 112Y DESIGN & STRUCTURE

- Solid one piece 10GA steel "U" shaped frame
- Base has holes for temporary or permanent installation

#### STORAGE REELS DESIGN & STRUCTURE

- Professional grade hand crank & motor driven reels to store & maintain long length of hose, cord, cable, wire, rope, tape, chain & other
- Reels have no swivel & no riser, for storage only (Model with suffix -BYXX)
- Sturdy "A" frame base design
- All welded steel "A" frame construction to strengthen the reel structure

#### RETRACTION

- 112Y - Direct hand crank rewind
- See page 14 For 1125 Series
- See page 15 For 1175 Series
- See page 16 For 1185 Series



WARNING: Cancer and reproductive Harm – See page 23 for more information – [www.P65Warning.ca.gov](http://www.P65Warning.ca.gov)

MODEL		LESS HOSE/CORD/CABLE							
		1125 SERIES				1175 SERIES		1185 SERIES	
		1125-4-200-BYXX	1125-4-325-BYXX	1125-5-200-BYXX	1125-5-250-BYXX	1175-6-100-BYXX	1175-6-200-BYXX	1185-2028-BYXX	1185-3328-BYXX
HOSE, ROPE, CABLE O.D.	1/4"	3,250'	4,875'	6,500'	7,600'	5,600'	9,750'	14,110'	23,250'
	3/8"	1,475'	2,225'	2,975'	3,450'	2,435'	4,305'	6,100'	10,135'
	1/2"	810'	1,215'	1,625'	1,900'	1,330'	2,310'	3,375'	5,575'
	5/8"	525'	775'	1,060'	1,225'	785'	1,400'	2,255'	3,665'
	3/4"	335'	500'	675'	775'	605'	1,055'	1,400'	2,375'
	7/8"	235'	360'	475'	575'	395'	670'	1,100'	1,865'
	1"	175'	265'	350'	410'	285'	515'	770'	1,275'
	1 1/4"	100'	165'	225'	260'	195'	350'	560'	915'
	1 1/2"	65'	100'	135'	150'	120'	220'	305'	515'
	1 3/4"	50'	90'	115'	140'	70'	135'	275'	450'
	2"	30'	50'	60'	75'	65'	125'	190'	310'
	2 1/4"	25'	45'	55'	65'	65'	105'	110'	190'
	2 1/2"	20'	40'	50'	60'	30'	60'	110'	180'
	2 3/4"	15'	35'	45'	55'	30'	55'	100'	175'
3"	10'	15'	20'	20'	25'	50'	50'	95'	
LAY FLAT HOSE	1"	200'	290'	380'	475'	350'	640'	930'	1,520'
	1 1/2"	140'	210'	285'	330'	120'	245'	325'	595'
	1 3/4"	120'	175'	235'	275'	120'	205'	300'	500'
	2"	95'	140'	190'	220'	90'	205'	270'	490'
	2 1/2"	70'	105'	140'	165'	80'	185'	270'	430'
3"	55'	85'	110'	130'	70'	160'	240'	280'	
APRX. LBS.		39	48	55	59	70	83	109	169
Size index		<b>4</b>	<b>5</b>	<b>5</b>	<b>7</b>	<b>8</b>	<b>9</b>	<b>10</b>	<b>11</b>

### REEL DIMENSIONS Technical Data Sheets Available On Website

SIZE INDEX	W		H		L	X	Y		M	N	Ø	Dw	
	CRANK	ELEC.	CRANK	ELEC.			CRANK	ELEC.					
<b>1</b>	12 1/4"	-	-	13 1/8"	-	12"	6"	6"	-	4"	3"	5 1/2"	4 1/2"
<b>2</b>	15 3/4"	-	-	13 1/8"	-	12"	9 1/2"	6"	-	5 1/2"	3"	5 1/2"	8"
<b>3</b>	20 1/4"	-	-	13 1/8"	-	12"	14"	6"	-	10"	3"	5 1/2"	12 1/2"
<b>4</b>	23 7/8"	25 3/4"	23"	18 3/4"	19 1/4"	17 5/8"	17 3/8"	15 3/8"	16"	-	-	6 1/4"	12"
<b>5</b>	29 7/8"	31 3/4"	29"	18 3/4"	19 1/4"	17 5/8"	23 3/8"	15 3/8"	16"	-	-	6 1/4"	18"
<b>6</b>	37 1/8"	38"	35 3/8"	18 3/4"	19 1/4"	17 5/8"	29 3/8"	15 3/8"	16"	-	-	6 1/4"	24"
<b>7</b>	41 1/8"	42"	39 3/8"	18 3/4"	19 1/4"	17 5/8"	33 3/8"	15 3/8"	16"	-	-	6 1/4"	28"
<b>8</b>	24 3/8"	26"	24 1/2"	26 1/8"	26 1/8"	24"	17"	20 1/8"	20 1/8"	-	-	10 1/2"	11 1/2"
<b>9</b>	32 7/8"	34 1/2"	33"	26 1/8"	26 1/8"	24"	25 1/2"	20 1/8"	20 1/8"	-	-	10 1/2"	20"
<b>10</b>	32 3/8"	34 5/8"	31 7/8"	30"	30"	30"	28"	25 1/2"	24 1/2"	-	-	10 1/2"	20"
<b>11</b>	45 3/8"	47 5/8"	44 7/8"	30"	30"	28"	38 1/2"	24 1/2"	24 1/2"	-	-	10 1/2"	33"

Overall Dimensions

Base

Mounting Pattern

Drum



## SWIVELS & O-RING COMPATIBILITY CHART

	Brass	Zinc Plated Steel	Electroless Nickel Plated Steel	Stainless Steel	Aluminum	Melonized Steel
<b>Available Swivel I.D.</b> Female NPT fittings (*BSPT fittings available)	1/4"	•	•		•	•
	3/8"	•	•		•	
	1/2"	•	•		•	
	3/4"	•	•		•	
	1"			•	•	
	1 1/2"			•	•	
	2"			•	•	
<b>Available Swivel Seals</b> (Refer to O-Ring Compatibility Chart for desired application)	Buna	•	•	•	•	
	EPDM	•	•	•	•	
	Viton®	•	•	•	•	•
	AFLAS			•	•	

## O-RING COMPATIBILITY CHART

Intended as a general guideline only. Users must test under their own operating guidelines to determine suitability. Please consult factory if your application is not listed.  
1 = Recommended | 2 = Fair | 3 = Poor | 4 = Unsatisfactory

	ACETYLENE	AIR (-30°F TO +25°F)	AIR (-25°F TO 200°F)	AIR (200°F TO 300°F)	AIR (300°F TO 400°F)	ANTIFREEZE	FUEL OIL / KEROSENE	GREASE (PETROLEUM BASED)	HYDROCHLORIC ACID	MOTOR OIL (PETROLEUM BASED)	NATURAL GAS	NITROGEN	OXYGEN (200°F TO 300°F)	OXYGEN (COLD)	PESTICIDES	STEAM (BELOW 300°F)	STEAM (300°F TO 400°F)	SEWAGE	SEA WATER	WATER (UP TO 200°F)
→	1	1	1	3	4	2	1	1	3	1	1	1	4	2	2	4	4	1	1	1
→	1	1	1	2	4	1	4	4	2	4	4	1	4	2	4	1	2	1	1	1
→	1	2	1	1	1	2	1	1	1	1	1	2	1	1	2	3	2	2	2	2
→	1	3	1	1	1	1	2	2	1	2	1	1	4	2	1	2	3	1	1	1



**Brass Swivels**

CNC machined from solid brass swivels are built for general multi-purpose applications. Configured in a 90 degree fluid path with full flow designed. Working pressure up to 3000 PSI & -40°F to 400°F\*.



**Zinc Plated Steel Swivels**

Machined from strong low carbon steel and configured in a 90 degree fluid path with full flow designed. Zinc plated steel swivels are recommended for non-corrosive applications. Working pressure up to 5000 PSI & -40°F to 400°F\*.



**Electroless Nickel Plated Steel Swivels**

Machined from strong low carbon steel and configured in a 90 degree fluid path with full flow designed. Nickel plated steel swivels are recommended for mildly corrosive applications. Working pressure up to 4000 PSI & -40°F to 400°F\*.



**Stainless Steel Swivels**

Machined from high quality, pure 316 stainless steel and configured in a 90 degree fluid path with full flow design. Stainless steel swivels offer superior corrosion protection. Working pressure up to 5000 PSI & -40°F to 400°F\*.



**In-line Swivels**

Nickel plated steel or stainless steel swivel configured in an in-line fluid path with full flow design. Working pressure up to 1,500 PSI for 1 1/2" I.D. & 1,000 PSI for 2" I.D. -40°F to 400°F\*.



**Melonized Steel Swivels**

Configured in a 90 degree fluid path with 1/4" ports, melonized steel swivels are used for hydraulic applications. Working pressure up to 10,000 psi & -5°F to 400°F\*.

\*Temperature rating depends on the seal type selected

## MOUNTING & ROLLER BRACKETS

PART NO.	REEL SERIES					
	P	SH, MP & HP	T	PC	P-W & SHW	P-WC
 <b>Swing Bracket</b> For vertical surface mounting, allows reel to swing 180°. Powder coated crinkle black 1/4" steel. Weight: 5 lbs.	<b>15720</b>	•	•	•	•	•
	<b>15725</b>			•		
 <b>Swivel Bracket</b> For horizontal surface mounting, ball bearing rotation, allows reel to swivel 345°. Powder coated crinkle black heavy gauge steel. Weight: 6 lbs. NOT FOR USE IN CEILING APPLICATIONS.	<b>15721</b>	•	•	•	•	•
 <b>EZ-Up Bracket</b> Reel easily slides in & out for easy overhead mounting. Use as an alternative to the #MR-1. Must be ordered with #15724 for "I" or "H" beam installations. Weight: 6.5 lbs.	<b>15723</b>	•	•	•	•	•
 <b>EZ-Up "I" or "H" Beam Adapter</b> Must be ordered with #15723. Powder coated crinkle black, all steel construction. Weight: 5 lbs.	<b>15724</b>	•	•	•	•	•
 <b>Mounting Bracket</b> For overhead mounting, fits 3" to 8 1/2" flange on "I" or "H" beam. Powder coated crinkle black 3/16" bent steel. Weight: 13 lbs.	<b>MR-1</b>	•	•	•	•	•
	<b>MRT-1</b>			•		
 <b>4-Way Roller Bracket</b> Heavy gauge steel, powder coated Coxreels blue (4RB) Available in stainless steel (4RB-SS). Weight: 1 lbs.	<b>4RB</b> 1/4"-3/4"	•	•	•	•	•
	<b>4RB-SS</b> 1/4"-3/4"	•	•	•	•	•

## HOSE STOPS & GUARDS



HOSE STOPS PART NO.	HOSE GUARD PART NO.	HOSE		CORD	OVERALL
		I.D.	O.D.		
<b>131</b>	<b>237-1</b>	1/4"	1/2"	12/3 SJO	2 1/2"
<b>131-1</b>	<b>237-1</b>	-	-	16/3 SJO	2 1/2"
<b>131-3</b>	<b>237-1</b>	3/8"	2 1/32"	10/3 SO	2 1/2"
<b>131-4</b>	<b>398-1</b>	1/2"	3/4"	-	2 1/2"
<b>254</b>	-	1/2"	3/4"	-	3 1/2"
<b>430</b>	<b>398-1</b>	3/4"	1"	-	3 1/2"
<b>20214</b>	-	1"	1 9/16"	-	5"

## PVC INLET HOSE ASSEMBLIES



PART NO.	FITTINGS	I.D.	LENGTH	PSI
<b>5150-1.5</b>	1/4" Male x Female NPT	1/4"	18"	300
<b>5153-1.5</b>	3/8" Male x Female NPT	3/8"	18"	300
<b>5154-1.5</b>	1/2" Male x Female NPT	1/2"	18"	300
<b>5155-1.5</b>	3/4" Male x Male NPT	3/4"	18"	300
<b>5224-1.5</b>	3/8" Male x Male NPT	3/8"	18"	3,000
<b>5256-1.5</b>	1/2" Male x Male NPT	1/2"	18"	2,500
<b>5290-1.5</b>	3/4" Male x Male NPT	3/4"	18"	1,500
<b>5304-1.5</b>	1/4" Male x Male NPT	1/4"	18"	5,000
<b>5336-1.5</b>	3/8" Male x Male NPT	3/8"	18"	4,000

## BEND RESTRICTORS



ADD SUFFIX	I.D.	DESCRIPTION	PSI
<b>-BXB</b>	1/4"	Black PVC Bend Restrictor	300
<b>-BXB</b>	3/8"	Black PVC Bend Restrictor	300
<b>-BXB</b>	1/2"	Black PVC Bend Restrictor	300

Designed to limit the degree of bending without compromising the integrity of the hose assembly while also preventing the hose-end from kinking, excessive wearing, & tearing.

WARNING: Cancer and reproductive Harm – See page 23 for more information – www.P65Warning.ca.gov



















# ACCESSORIES

## MODEL UPGRADES & ADDITIONS

	PART NO.	AVAILABLE FOR SERIES						
		100	1125	1175	1185	1195	1275	1600
 <b>Spring Loaded Lock Pin</b> The spring-loaded lock pin assembly is designed to lock & secure the reel, even in mobile conditions over rough terrain.	<b>9077</b>	•						
	<b>20843</b>		•	•	•	•	•	•
 <b>3-Way Pin Lock Kit</b> 3 Positions - Pin locks reel with heavy duty 3/4" solid steel spin. Disengages for free unwind. Can be used to activate switch for electric rewind.	<b>16702</b>							•
 <b>Universal Bracket Kit</b> 4 various positions 0°, 30°, 60°, 90° for mounting bevel crank on either side of the reel. Includes removable center guard cap for easy bearing access. Made from powder coated steel.	<b>16400</b>							•
 <b>Gear Guards</b> Guards beveled gears or chain & sprocket from dirt & foreign matter, while also protecting operator from injury.	<b>7406</b>		•					
	<b>7700</b> 24" disc size			•				
	<b>8176</b>					•		
	<b>8176-1</b> 24" disc size				•			
	<b>8176-2</b> 28" disc size				•			
	<b>16601-122</b> 20" disc size							•
	<b>16602-138</b> 24" disc size							•
<b>16602-180</b> 28" disc size							•	
 <b>Idler Gear</b> Reduce drum speed & increase torque. Available in three sizes, they are factory installed on the motor kits.	<b>17250-2</b> (1:2 ratio)					•	•	•
	<b>17250-3</b> (1:3 ratio)					•	•	•
	<b>17250-4</b> (1:4 ratio)					•	•	•
 <b>Brawny Reel Upgrade</b> Available for 100 & 1125 Series for 3,000 PSI (BX) or 1125 -5,000 PSI (BH) - 10 gauge plates welded into each disc to keep them from bowing. - Prevents deformation & eventual crushing of the drum that can be caused by hose pressure. - The center drum has been thickened from 16GA to 14GA.	Prefix model <b>BX</b>	•	•					
	Prefix model <b>BH</b>		•					
 <b>High Temperature Drag Brake</b> For 1/2" models	<b>7429-1-4</b>		•					
 <b>High Temperature Drag Brake</b> For 3/4" models	<b>7429-1-5</b>		•					
 <b>3 Way Brake</b> A 3-position brake with lock, friction & free spinning positions. Easily clears brackets & guards for gloved-hand operation. In locked position, does not protrude past front of reel.	<b>16703</b>							•
 <b>Heavy Duty Band Brake</b> Steel band lined with brake friction material. Tension is adjusted with a wing nut or a knob by hand (no tools required). - Increased braking power - Increased brake life. - Easier & more precise brake adjustment (control).	<b>8340</b>		•	•				
	<b>8302</b>				•			
	<b>8302-1</b> 90° Swivel				•			
	<b>16705</b>							•
 <b>Bevel Crank Handle Holster</b> Universal design mounts to either side of the reel with independent mounting holes. Features chained retaining pin to keep handle in place.	<b>16704</b>		•	•	•	•	•	•
 <b>Hose Strain Relief Kit</b> - Allows the hose to be secured against the drum. - The clamp provides a strain relief when the hose is fully extended from the reel. - Allow the hose to be routed between the riser connection & the hose clamp with a proper bend radius.	<b>HSRK-050</b> 1/2" Hose		•					
	<b>HSRK-075</b> 3/4" Hose		•	•				
	<b>HSRK-100</b> 1" Hose		•	•				
	<b>HSRK-125</b> 1 1/4" Hose				•			
	<b>HSRK-150</b> 1 1/2" Hose					•	•	

## SPEED CONTROLLERS FOR MOTORIZED MODELS

	PART NO.	MOTOR OPTIONS							
		E	EB	ED	EA	EF	EJ	A	AB
 <b>Explosion Proof Stationary Push Button Switch</b> For 12V D.C. applications, must be used with solenoid. Cast 3/4" N.P.T. hub inlet.	<b>20882</b>	•							
 <b>Vapor Proof Junction Box</b> Includes box cover & gasket, has three 3/4" N.P.T. hubs.	<b>20883</b>	•	•	•	•	•			
 <b>General Purpose Reversing Switch</b> For direct starting & reversing of A.C. rewind motor.	<b>15210</b>				•				
 <b>Sealed Push Button Switch</b> Weather proof, dust proof momentary contact. To be used with solenoid. 30 AMP.	<b>20876</b>	•	•	•		•			
 <b>Solenoid Relay</b> 12V D.C. for activating motor.	<b>20877</b>	•		•					
 <b>Circuit Breaker</b> 50 amp automatic reset, circuit breaker. A circuit breaker is recommended for all 12V D.C. explosion proof motors.	<b>20878</b>	•		•					
 <b>Switch Box</b> (Includes #20876, #20877, & #20878 & all parts needed to assemble the entire switch box) - Casing is powder coated crinkle black.	<b>8281</b>	•		•					
 <b>Electrical Box &amp; Switch</b> - Installs on any DC electric motor kit. - Push button switch mounts to frame. or to 3-Way Pin Lock. - Works with all guards and accessories.	<b>16780-12</b> 12 VDC	•		•					
	<b>16780-24</b> 24 VDC		•			•			
 <b>115/230 AC/Volt Variable Speed Controller</b> - 10-amp fuse. - On/off push button switch. - Forward/reverse feature.	<b>20875</b>				•				
 <b>115/230 AC/Volt Variable Speed Controller</b> - 10-amp fuse. - On/off push button switch.	<b>20874</b>				•		•		
 <b>115/230 AC/Volt Variable Speed Controller</b> • 10-amp fuse. • Switch not included	<b>20873</b>				•		•		
 <b>12 Volt DC Electric Motor Variable Speed Controller</b> On/off push button switch. • Relay, 50-amp circuit breaker. • Forward/reverse feature.	<b>20872</b>	•		•					
 <b>12 Volt DC Electric Motor Variable Speed Controller</b> On/off push button switch. • Relay, 50-amp circuit breaker.	<b>20871</b>	•		•					
 <b>12 Volt DC Electric Motor Variable Speed Controller</b> • Switch not included	<b>20870</b>	•		•					
 <b>Electric Motor Speed Controller</b> • For AC motors • Fixed speed - 50% less	<b>20868</b>				•				
 <b>Control Valve</b> Control valve for No. 4 Gast Air Motor available upon request	<b>15212</b>							•	
	<b>15212-1</b>							•	

 **WARNING: Cancer and reproductive Harm – See page 23 for more information – www.P65Warning.ca.gov**

# CUSTOMIZE YOUR REEL

FROM CONCEPT TO COMPLETION



## CUSTOMIZE YOUR REEL WITH COXREELS CUSTOM PRODUCTS:

Our engineering capabilities and manufacturing processes allow us to design and build top quality products for any conceivable application where reels are needed.

- Customize fluid paths/axles or create custom brackets, mounts, and accessories.
- Integrate with your specific hardware, systems, or devices.
- Modify drums, add divider disks, manipulate openings, or integrate hose handling devices.
- Combine features of various reel model lines, creating your own hybrid reel.
- Create custom retraction systems.
- Increase temperature and pressure capabilities, or multiply fluid paths.
- The possibilities are only limited by your imagination!

### POWDER COAT OPTIONS\*

3 digit suffix for spring driven or 4 digit suffix for hand crank & motorized models.



-BXX or -BXXX  
Blue



-RXX or -RXXX  
Red



-GXX or -GXXX  
Gray



-KXX or -KXXX  
Gloss Black



-CXX or -CXXX  
Crinkle Black



-WXX or -WXXX  
White



-NXX or -NXXX  
Green

\*Minimum quantity & or dollar amount may apply



# EZ-COIL®

## SAFETY REWIND SYSTEM

EZ-Coil® is a patented controlled retraction technology offered exclusively on Coxreels' Safety Series reels. EZ-Coil® retracts up to 80% slower than conventional reels, resulting in workplace safety, protection from injury & costly property damage.

**NOBODY SHOULD BE WITHOUT EZ-COIL®!**

	Conventional SPRING DRIVEN REELS	COXREELS' EZ-COIL
<b>SPEED</b>	25 ft./sec.	5 ft./sec.
<b>WHIPPING</b>	5-15 ft.	1 ft.
<b>IMPACT</b>	500 ft./lbs.	0-1 ft./lbs.

Based on an independent evaluation performed by COXREELS. Depending on certain conditions, results may vary.

## ! SAFETY FIRST !

### PLEASE REVIEW ALL SAFETY INFORMATION BEFORE CHOOSING AND USING ALL EQUIPMENT

SERIOUS INJURY, DEATH AND DESTRUCTION OF PROPERTY can result from improper selection or improper use of products described in this catalog. Since COXREELS has no control over the number and variety of applications for which its products may be purchased or the conditions under which they may be used, COXREELS liability on any claim, whether in contract, tort (including negligence), or otherwise, for any loss or damage shall in no case exceed the price paid for product or any part thereof which give rise to claim. However, the general information contained herein shall allow the customer to select and assume all responsibility for product acceptability and fitness for specific applications. As always, COXREELS technical assistance and support is available for your convenience.

**NOTE:** All designs, specifications, and dimensional data contained in this book are subject to change without notice. No additional warranties, express or implied, including warranties of merchantability for fitness for a particular purpose, are created by the descriptions and depictions of the products on in this book.

## ! PROP 65

In compliance of California's Proposition 65, Coxreels will be applying warning labels to all applicable products with regard to chemicals known to the state of California to cause cancer or reproductive harm.

All reels will carry the following warning.

Parts and components will carry warning labels relative to the respective materials used.

For more information see <http://www.coxreels.com/prop65.html>



**WARNING**  
This product can expose you to chemicals including nickel, which are known to the State of California to cause cancer, and chemicals including chromium, which are known to the State of California to cause birth defects or other reproductive harm.

► For more information: [www.P65Warnings.ca.gov/product](http://www.P65Warnings.ca.gov/product)



[www.coxreels.com](http://www.coxreels.com) • 1.800.COX.REEL

AIR TRANSPORTATION

## INDUSTRY CATALOGS



## PRODUCT CATALOGS



100 years  
**Coxreels**  
 USA made since 1923

### CORPORATE HEADQUARTERS:

Tempe, Arizona USA  
 P: 480.820.6396 F: 480.820.5132  
 Toll Free: 800.COX.REEL  
[www.coxreels.com](http://www.coxreels.com) [info@coxreels.com](mailto:info@coxreels.com)

### INTERNATIONAL:

EUROPE / MIDDLE EAST / AFRICA  
 P: +44 (0) 1536 464 990  
 F: +44 (0) 1536 464 999  
[www.crireels.com](http://www.crireels.com) [sales@crireels.com](mailto:sales@crireels.com)

