

# Performance Hose Reels

AVAILABLE IN: **SPRING DRIVEN**  
**EZ-COIL®**

## P SERIES

**COXREELS® P Series "Performance" spring driven hose reels have a long history of dependability and trouble free performance.** Their compact space-saving size and heavy duty construction make them highly versatile and virtually indestructible. Time-tested proven components, superior design and craftsmanship have contributed to it's worldwide reputation as the most trusted hose reel.

**LOW PRESSURE** Models with hose are for air or water service with a maximum temperature 150° F. Models less hose can be used for air, water or oil. **NOTE: Do not exceed listed hose O.D. to obtain maximum length.**

HOSE						LESS HOSE		SIZE INDEX
MODEL	I.D.	O.D.	FT.	PSI	APRX. LBS.	MODEL	APRX. LBS.	
P-LP-125	1/4"	1/2"	25	300	27	P-LPL-125	24	1
P-LP-130	1/4"	1/2"	30	300	27	P-LPL-130	24	1
P-LP-135	1/4"	1/2"	35	300	28	P-LPL-135	25	1
P-LP-140	1/4"	1/2"	40	300	38	P-LPL-140	34	3
P-LP-150	1/4"	1/2"	50	300	40	P-LPL-150	35	3
P-LP-325	3/8"	21/32"	25	300	28	P-LPL-325	25	2
P-LP-330	3/8"	21/32"	30	300	37	P-LPL-330	33	3
P-LP-335	3/8"	21/32"	35	300	38	P-LPL-335	34	3
P-LP-340	3/8"	21/32"	40	300	39	P-LPL-340	34	3
P-LP-350	3/8"	21/32"	50	300	43	P-LPL-350	36	3
P-LP-415	1/2"	27/32"	15	300	41	P-LPL-415	38	4
P-LP-425	1/2"	27/32"	25	300	44	P-LPL-425	39	4
P-LP-430	1/2"	27/32"	30	300	45	P-LPL-430	40	4
P-LP-450	1/2"	27/32"	50	300	48	P-LPL-450	43	4

**MEDIUM PRESSURE** Reels are furnished with standard one wire braid hose suitable for air, water or oil applications. Hose exceeds SAE R1 specifications. Maximum temperature 250° F. **NOTE: Do not exceed listed hose O.D. to obtain maximum length.**

HOSE						LESS HOSE		SIZE INDEX
MODEL	I.D.	O.D.	FT.	PSI	APRX. LBS.	MODEL	APRX. LBS.	
P-MP-320	3/8"	5/8"	20	3000	46	P-MPL-320	41	4
P-MP-325	3/8"	5/8"	25	3000	49	P-MPL-325	42	4
P-MP-330	3/8"	5/8"	30	3000	51	P-MPL-330	43	4
P-MP-335	3/8"	5/8"	35	3000	52	P-MPL-335	43	4
P-MP-420	1/2"	3/4"	20	2500	47	P-MPL-420	41	4
P-MP-425	1/2"	3/4"	25	2500	49	P-MPL-425	42	4
P-MP-430	1/2"	3/4"	30	2500	51	P-MPL-430	43	4

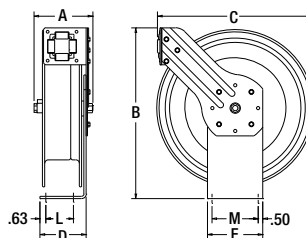
**HIGH PRESSURE** Reels are furnished standard with S.A.E. 100R16 #1 or #2 wire braid hose suitable for grease and hydraulic oil applications. Maximum temp. 250° F. **NOTE: Do not exceed listed hose O.D. to obtain maximum length.**

HOSE						LESS HOSE		SIZE INDEX
MODEL	I.D.	O.D.	FT.	PSI	APRX. LBS.	MODEL	APRX. LBS.	
P-HP-120	1/4"	17/32"	20	5000	46	P-HPL-120	41	4
P-HP-125	1/4"	17/32"	25	5000	48	P-HPL-125	42	4
P-HP-130	1/4"	17/32"	30	5000	50	P-HPL-130	43	4
P-HP-135	1/4"	17/32"	35	5000	51	P-HPL-135	43	4
P-HP-320	3/8"	43/64"	20	4000	47	P-HPL-320	41	4
P-HP-325	3/8"	43/64"	25	4000	49	P-HPL-325	42	4
P-HP-330	3/8"	43/64"	30	4000	51	P-HPL-330	43	4

### REEL DIMENSIONS

Technical Data Sheets Available On Website

SIZE INDEX	A	B	C	D	E	MOUNT L-M
1	6"	14 1/2"	13 3/4"	5"	6"	3" - 5"
2	6 1/4"	14 1/2"	13 3/4"	5"	6"	3" - 5"
3	6 1/8"	18 1/4"	17 1/4"	6"	6"	4" - 5"
4	7"	18 1/4"	17 1/4"	6"	6"	4" - 5"



### AVAILABLE OPTIONS

**MOUNTING BRACKETS**  
ENHANCE PERFORMANCE  
EASIER INSTALLATION  
WALL, FLOOR & CEILING  
MANY STYLES AVAILABLE  
*See Page 34 For Selection*

**UPGRADE TO EZ-COIL®**  
INCREASE OPERATOR SAFETY  
AVOID PERSONAL INJURY  
LONGER REEL LIFE  
*See Page 3 For More Details*

**HOSE UPGRADE**  
PROTECTION FROM THE ELEMENTS  
EXTENDED HOSE LIFE  
APPLICATION SPECIFIC  
*See Page 33 For More Details*

**STAINLESS STEEL**  
SWIVELS, PLUMBING  
& CONSTRUCTION  
FOR NON-CORROSIVE  
PURE PRODUCT FLOW  
*See Page 15 For Details*



Toll Free 800-COX-REEL • Fax 800-229-REEL • Int 480-820-6396 • Fax 480-820-5132 • [www.coxreels.com](http://www.coxreels.com)



**WHEN SIZE REALLY DOES MATTER!**

**Cartridge Style Spring Motor For Safe Replacement & Easy Maintenance**

### P SERIES Offers...

**Hose I.D.:** 1/4" - 1/2" **Pressure:** To 5,000 PSI

- ✓ Compact Space Saving Design
- ✓ Swivel Seals: NITRILE

### SPRING DRIVEN FEATURES:

- ✓ Auto Rewind Easily Wraps, Stores & Protects Hose
- ✓ Heavy Gauge 1/4" Steel Base & Support Post
- ✓ Factory-Matched Cartridge-Style Spring Motor
- ✓ Brass NPT Swivel Inlet Machined From Solid (Zinc Plated Steel On HP Models)
- ✓ 1" Solid Steel Axle With 1" Lubricated Precision Bearings
- ✓ Guide Arm Adjusts To Wall, Floor & Overhead Positions
- ✓ Multi-Position Lock Ratchet Secures Hose At Desired Length
- ✓ Non-Corrosive Stainless Steel Spring, Pawl & Zinc Plated Ratchet

### COXREELS® SIGNATURE FEATURES:

- ✓ Professional Grade Heavy Duty Steel Construction
- ✓ Durable Proprietary CPC™ Powder Coat Process
- ✓ Rolled Edges & Ribbed Discs Provide Strength & Safety
- ✓ Leading 2-Year Manufacturer's Limited Warranty
- ✓ Made In The U.S.A. Sold & Supported Worldwide

**HOW TO ORDER?**

See Page 5 For Details

**NEED SPECIAL O-RINGS**

See Page 35 For Details