

# Reel Accessories

## MOUNTING BRACKETS, ASSEMBLIES, ROLLER BRACKETS & HOSE GUIDES

### MOUNTING BRACKETS

#### SWING BRACKET



For vertical surface mounting, allows reel to swing 180°. Powder coated crinkle black 3/16" steel. Weight: 5 lbs.

PART NO.	FOR SERIES
<b>15720</b>	P, SH, MP & HP, EN, PC, P-W & SHW, P-WC, ALUMI-PRO & EZ-versions Maximum reel weight: 70 lbs
<b>15725</b>	T, C & EZ-versions Maximum reel weight: 120 lbs

#### SWIVEL BRACKET



For horizontal surface mounting, ball bearing rotation, allows reel to swivel 345°. Powder coated crinkle black heavy gauge steel. Weight: 6 lbs. NOT FOR USE IN CEILING APPLICATIONS.

PART NO.	FOR SERIES
<b>15721</b>	P, SH, MP & HP, EN, PC, P-W & SHW, P-WC, ALUMI-PRO, T, C & EZ-versions Maximum reel weight: 120 lbs

#### EZ-UP BRACKET



Reel easily slides in & out for easy overhead mounting. Use as an alternative to the #MR-1. Must be ordered with #15724 for "I" or "H" beam installations. Weight: 6.5 lbs.

PART NO.	FOR SERIES
<b>15723</b>	P, SH, MP & HP, EN, PC, P-W & SHW, P-WC, ALUMI-PRO & EZ-versions Maximum reel weight: 70 lbs

#### EZ-UP "I" OR "H" BEAM ADAPTER



Must be ordered with #15723. Powder coated crinkle black, all steel construction. Weight: 5 lbs.

PART NO.	FOR SERIES
<b>15724</b>	P, SH, MP & HP, EN, PC, P-W & SHW, P-WC, ALUMI-PRO & EZ-versions Maximum reel weight: 70 lbs

### MOUNTING BRACKETS *Con't*

#### MOUNTING BRACKET



For overhead mounting, fits 3" to 8 1/2" flange on "I" or "H" beam. Powder coated crinkle black 3/16" bent steel. Weight: 13 lbs.

PART NO.	FOR SERIES
<b>MR-1</b>	P, SH, MP & HP, EN, PC, ALUMI-PRO, P-W & SHW, P-WC & EZ-versions Maximum reel weight: 120 lbs
<b>MRT-1</b>	T, C & EZ-versions Maximum reel weight: 120 lbs

### HOSE GUIDES

#### PIVOTING HOSE GUIDE



Heavy gauge powder coated steel arm & pivot mount w/5 locking positions. Stainless steel enclosed 4-way roller system and zinc plated axle for non-corrosive performance. Specify drum width. (For motor options E & ED only). Weight: 17 lbs.

PART NO.	FOR SERIES	POSITION
<b>15732</b>	1125	BOTTOM
<b>15733</b>	1125	TOP

#### PIVOTING HOSE GUIDE



Heavy gauge powder coated steel arm & pivot mount w/5 locking positions. Large 1" diameter pivot shaft. Sealed precision bearings support pivot shaft & chrome-plated billet aluminum guide rollers. Specify drum width. (For motor options E & ED only). Weight: 17 lbs.

PART NO.	FOR SERIES	POSITION
<b>15728</b>	1175, 1185	BOTTOM
<b>15729</b>	1175	TOP
<b>15730</b>	1185	TOP

#### SLIDING HOSE GUIDE



4-way, solid black delrin roller assembly, smooth tapered handle, non-corrosive zinc plated solid rods, heavy gauge "CPC" powder coated steel framing, specify drum width, Weight: 8 lbs.

PART NO.	FOR SERIES
<b>15734</b>	1125

### 4-WAY ROLLER BRACKET ASSEMBLIES

#### TOP REWIND ASSEMBLY

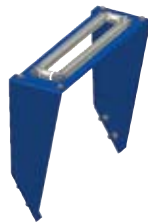


4-way enclosed pinch-proof stainless steel rollers are 1" in diameter supported by powder coated steel brackets. Specify drum width. Weight: 10 lbs.

PART NO.*	FOR SERIES
<b>15353</b>	1125, 1275, 1125WCL
<b>15355</b>	1275W-C
<b>15357</b>	1175
<b>15357-11.5</b>	1175-V
<b>15368</b>	1195 (28")
<b>15368-1</b>	1195 (32")
<b>15369</b>	1185 (24")
<b>15369-1</b>	1185 (28")

\*Suffix roller bracket part number with drum width dimension. (Example: 11.5 for 11.5")

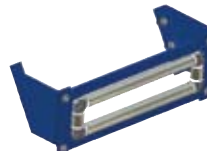
#### TOP REWIND ASSEMBLY



**FOR CEILING MOUNT APPLICATIONS**  
4-way enclosed pinch-proof stainless steel rollers are 1" in diameter supported by powder coated steel brackets. Specify ceiling mount & specify drum width. Weight: 10 lbs.

PART NO.*	FOR SERIES
<b>15358</b>	1125, 1275, 1125WCL

#### BOTTOM REWIND ASSEMBLY

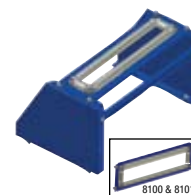


4-way enclosed pinch-proof stainless steel rollers are 1" in diameter supported by powder coated steel brackets. Specify drum width. Weight: 10 lbs.

PART NO.*	FOR SERIES
<b>15037</b>	1175
<b>15037-11.5</b>	1175-V
<b>15354</b>	1125, 1125WCL, 1275
<b>15370</b>	1195
<b>15370-1</b>	1185

\*Suffix roller bracket part number with drum width dimension. (Example: 11.5 for 11.5")

#### TOP REWIND ASSEMBLY



**FOR CEILING, WALL OR FLOOR MOUNT APPLICATIONS**  
4-way enclosed pinch-proof stainless steel rollers are 1" in diameter supported by powder coated steel brackets. Specify ceiling mount & specify drum width. Weight: 10 lbs.

PART NO.*	SIZE	FOR SERIES
<b>20458 &amp; 8100</b>	For 3/8" - 3/4"	SP, DP
<b>20458 &amp; 8101</b>	For 1" - 1 1/2"	SP, DP
<b>20458-724 &amp; 8101-7.5</b>	For 1" - 1 1/2"	SP-V, DP-V

### 4-WAY ROLLER BRACKET ASSEMBLIES

#### TOP REWIND EXTENSION ASSEMBLY



4-way enclosed pinch-proof stainless steel rollers are 1" in diameter supported by powder coated steel brackets. Specify drum width. Weight: 10 lbs.

PART NO.	FOR SERIES
<b>15353-P</b>	1125

### 4-WAY ROLLER BRACKET

#### CABINET MOUNTED ROLLER BRACKET



Heavy gauge steel, powder coated Coxreels blue (4RB) Available in stainless steel (4RB-SS). Weight: 1 lbs.

PART NO.	SIZE I.D.	FOR SERIES
<b>4RB</b>	For 1/4" - 3/4"	S
<b>4RB-SS</b>	For 1/4" - 3/4"	S

### 3-WAY ROLLER BRACKET ASSEMBLIES

#### TOP REWIND ASSEMBLY



3-way open spool roller assembly with 1.5" chrome-plated machined steel spools and 1.5" stainless steel tubing bottom roller and powder coated steel brackets. Specify drum width. Weight: 14 lbs.

PART NO.*	FOR SERIES
<b>15359</b>	1125, 1275
<b>15360</b>	1175, 1185 (24")
<b>15360-11.5</b>	1175-V
<b>15361</b>	1185 (28")

#### BOTTOM REWIND ASSEMBLY



3-way open spool roller assembly with 1.5" chrome-plated machined steel spools and 1.5" stainless steel tubing bottom roller and powder coated steel brackets. Specify drum width. Weight: 14 lbs.

PART NO.*	FOR SERIES
<b>15362</b>	1125, 1275
<b>15363</b>	1175, 1185 (24")
<b>15363-11.5</b>	1175-V
<b>15364</b>	1185 (28")

\*Suffix roller bracket part number with drum width dimension. (Example: 11.5 for 11.5")

**DON'T SEE EXACTLY WHAT YOU'RE LOOKING FOR?**

**Contact Your Sales Representative Or The Factory Today.**

We have Trained Professionals To Help With All Your Special Needs.



Toll Free 800-COX-REEL • Fax 800-229-REEL • Int 480-820-6396 • Fax 480-820-5132 • [www.coxreels.com](http://www.coxreels.com)

