

Aviation

PROFESSIONAL GRADE FEATURES



HIGH VISIBILITY ORANGE VINYL CABLE COVER & solid rubber cable stop

MULTI-POSITION GUIDE ARM adjusts to wall, floor & overhead position

NON-CORROSIVE & NON-SPARKING STAINLESS STEEL SPRING, bronze pawl & zinc plated ratchet to secure cable at desired length

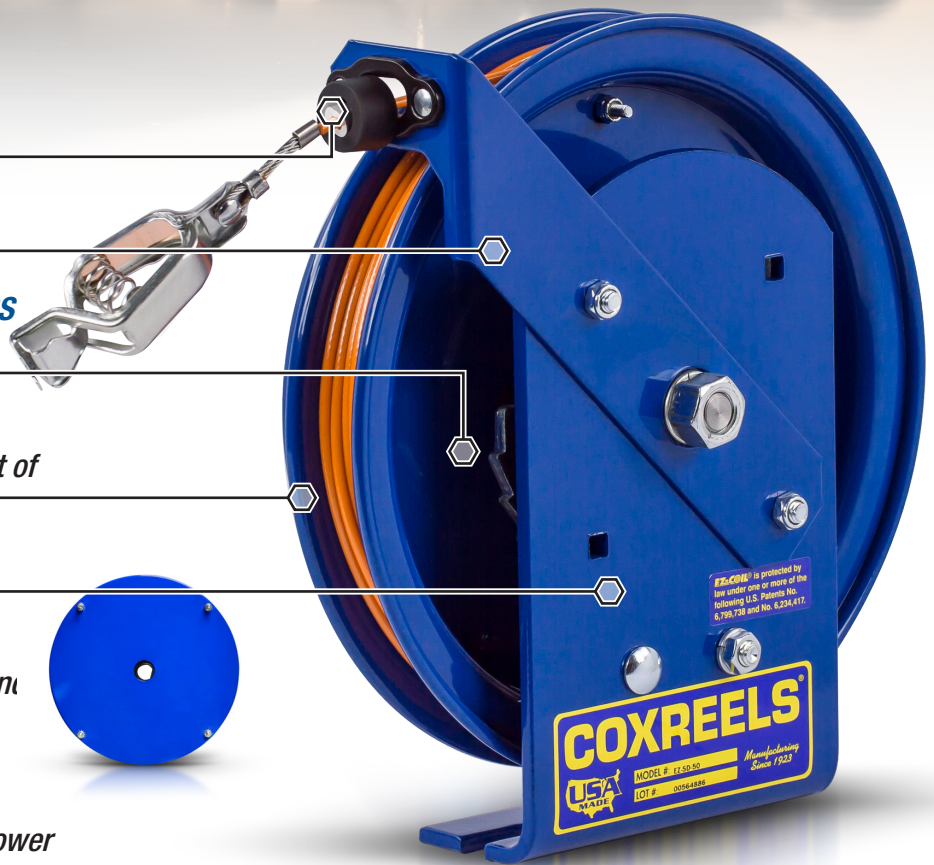
HEAVY DUTY SOLID SPUN DISCS WITH ROLLED EDGES - not stamped, made with first of its kind CNC robotic spinning cell

HIGH QUALITY STEEL CONSTRUCTION with our durable CPC™ powder coat finish

ENCLOSED FACTORY TUNED AND MATCHED CARTRIDGE-STYLE SPRING MOTOR for safe and easy maintenance.

- Viewable on other size

Models equipped with **EZ-COIL**, Coxreels patented safety system, retracts up to 80% slower than conventional reels



POSSIBLE FIELDS OF APPLICATION

- Ground Support
- Aviation Refueling
- Aviation Static Grounding
- Fuel Storage & Dispensing System
- Bulk Transfer
- Vehicle Refueling
- Lubricant Dispensing
- Oil Savage Dispensing
- Portable Water



WWW.COXREELS.COM
INFO@COXREELS.COM

5865 S. ASH AVE
TEMPE, AZ 85283

800.COX.REEL
480.820.6396

#COXREELS





SD & SDH SERIES

- Available with 7 strand x 7 wire galvanized steel or stainless steel cable
- High visibility orange vinyl cable cover
- **SD SERIES**
 - Compact static discharge cable reel available in spring rewind or direct hand crank retraction
 - Non corrosive stainless steel spring, pawl & zinc plated ratchet
- **SDH SERIES**
 - Direct hand crank with smooth, rounded handle

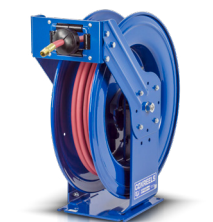
MODEL	EZ-Coil® Safety Line	O.D.	FT.	APRX. LBS.	W x H x L
SD-35	EZ-SD-35	5/32"	35	18	3 7/8 x 11 1/2 x 11"
SD-50	EZ-SD-50	5/32"	50	20	3 7/8 x 11 1/2 x 11"
SD-75	EZ-SD-75	5/32"	75	31	4 x 15 x 14 1/2"
SD-100	EZ-SD-100	5/32"	100	32	4 x 15 x 14 1/2"
SD-35-1	EZ-SD-35-1	5/32"	35	18	3 7/8 x 11 1/2 x 11"
SD-50-1	EZ-SD-50-1	5/32"	50	20	3 7/8 x 11 1/2 x 11"
SD-75-1	EZ-SD-75-1	5/32"	75	31	4 x 15 x 14 1/2"
SD-100-1	EZ-SD-100-1	5/32"	100	32	4 x 15 x 14 1/2"
SDH-100	-	5/32"	100	24	5 3/4 x 11 1/2 x 11"
SDH-200	-	5/32"	200	28	5 3/4 x 11 1/2 x 11"
SDH-100-1	-	5/32"	100	24	5 3/4 x 11 1/2 x 11"
SDH-200-1	-	5/32"	200	28	5 3/4 x 11 1/2 x 11"



SP SERIES

- External fluid paths with machined from solid brass 90° full-flow NPT swivel inlets
- Swivel Seals: NITRILE (AFLAS on 1" models)
- Reel features a sturdy box-style frame design. Reel adjusts to wall, floor, vehicle & overhead position
- Long lasting self-lubricated flange bearings for smooth rotation
- * Supplied with fuel hose

MODEL	I.D.	O.D.	FT.	PSI	APRX. LBS.	W x H x L
SLPL-550	3/4"	1 1/16"	50	300	86	19 5/8 x 20 1/2 x 22 7/8"
SLPF-550*	3/4"	1 3/16"	50	300	107	19 5/8 x 20 1/2 x 22 7/8"
SLPL-650	1"	1 1/2"	50	300	109	19 5/8 x 24 1/2 x 26 3/8"
SLPF-650*	1"	1 1/2"	50	300	142	21 x 28 1/2 x 30 3/8"
SLPL-750	1 1/2"	1 13/16"	50	250	123	18 x 28 1/2 x 30 3/8"
SLPL-850	1 1/2"	2 1/16"	50	250	138	20 x 28 1/2 x 30 3/8"



T SERIES - EQUIPPED WITH SUPER HUB™

- External fluid path with machined from solid brass 90° full-flow NPT swivel inlet (Zinc plated steel swivel on HP models)
- Swivel Seals: NITRILE
- Sturdy dual pedestal reel features Coxreels' exclusive Super Hub™ dual axle support system
- TSHF MODELS: Fuel dispensing hose designed to convey non-aromatic fuels including diesel, kerosene, fuel oil & heating oil.

MODEL	EZ-Coil® Safety Line	I.D.	O.D.	FT.	PSI	APRX. LBS.	W x H x L
TSHF-N-550	Supplied with fuel hose	3/4"	1 3/16"	50	300	91	10 x 25 1/2 x 24"
TSHF-N-575	Supplied with fuel hose	3/4"	1 3/16"	75	300	105	12 x 25 1/2 x 24"
TSHF-N-635	Supplied with fuel hose	1"	1"	35	300	95	9 7/8 x 21 7/8 x 20 3/8"
TSHF-N-650	Supplied with fuel hose	1"	1"	50	300	101	12 x 25 1/2 x 24"
TMP-N-350	EZ-TMP-350	3/8"	1 1/16"	50	3,000	74	9 3/8 x 25 1/2 x 19 1/2"
TMP-N-375	EZ-TMP-375	3/8"	1 1/16"	75	3,000	99	9 3/8 x 25 1/2 x 24"
TMP-N-3100	EZ-TMP-3100	3/8"	1 1/16"	100	3,000	106	9 3/8 x 25 1/2 x 24"
TMP-N-450	EZ-TMP-450	1/2"	1 3/16"	50	2,500	77	9 3/8 x 21 1/4 x 19 1/2"
TMP-N-475	EZ-TMP-475	1/2"	1 3/16"	50	2,500	100	9 3/8 x 21 1/4 x 24"
TMP-N-4100	EZ-TMP-4100	1/2"	1 3/16"	100	2,500	106	9 3/8 x 21 1/4 x 24"
TMP-N-550	EZ-TMP-550	3/4"	1 1/16"	50	1,500	94	9 7/8 x 25 1/2 x 24"
TMP-N-575	-	3/4"	1 1/16"	75	1,500	100	12 1/2 x 25 1/2 x 24"
TMP-N-650	-	1"	1 3/8"	50	1,250	116	12 1/2 x 25 1/2 x 24"



1175 SERIES

- External fluid path with machined from solid brass 90° full-flow NPT swivel inlet
- Swivel Seals: AFLAS
- Exclusive low profile outlet riser, open drum slot design for flat smooth hose wrap. All welded steel "A" frame construction for superior reel structure

MODEL	MOTOR OPTION	I.D.	O.D.	FT.	PSI	APRX. LBS.	W x H x L
1175-6-50	Electric Motor Options Available	1"	1 7/16"	50	3,000	67	24 1/8 x 26 1/8 x 24"
1175-6-100		1"	1 7/16"	100	3,000	70	28 1/8 x 26 1/8 x 24"
1175-6-150		1"	1 7/16"	150	3,000	75	32 1/8 x 26 1/8 x 24"
1175-6-200		1"	1 7/16"	200	3,000	83	36 1/8 x 26 1/8 x 24"



1185 SERIES

- External fluid path with in-line aluminium straight, full flow NPT swivel inlet
- Swivel Seals: NITRILE
- Exclusive low profile outlet riser, open drum slot design for flat smooth hose wrap. All welded steel "A" frame construction for superior reel structure

MODEL	MOTOR OPTION	I.D.	O.D.	FT.	PSI	APRX. LBS.	W x H x L
1185-1124	Electric Motor Options Available	1 1/2"	2 1/16"	50	600	76	25 x 26 x 24"
1185-1524		1 1/2"	2 1/16"	75	600	81	29 x 26 x 24"
1185-2024		1 1/2"	2 1/16"	100	600	94	33 1/2 x 26 x 24"
1185-2528		1 1/2"	2 1/16"	150	600	122	38 1/2 x 30 x 28"



1195 SERIES

- External fluid path with in-line aluminium straight, full flow NPT swivel inlet
- Swivel Seals: VITON®
- Exclusive low profile outlet riser, open drum slot design for flat smooth hose wrap. All welded steel "A" frame construction for superior reel structure

MODEL	MOTOR OPTION	I.D.	O.D.	FT.	PSI	APRX. LBS.	W x H x L
1195-932-C	Electric Motor Options Available	2"	2 9/16"	50	600	128	22 3/4 x 33 1/4 x 32"
1195-1332-C		2"	2 9/16"	75	600	148	26 3/4 x 33 1/4 x 32"
1195-2032-C		2"	2 9/16"	115	600	186	30 3/4 x 33 1/4 x 32"

CHOICE OF MOTORS 1175, 1185 & 1195



This selection only represents a sample of products applicable in this industry. Please visit us online or consult the factory for more product options.