

# Hose & RUBBER

## PROFESSIONAL GRADE FEATURES



**ADJUSTABLE SOLID RUBBER HOSE STOP** for lead length positioning

**VERSATILE GUIDE ARM** adjusts to wall, floor, ceiling & vehicle mounting

**EXTERNAL FLUID PATH WITH MACHINED FROM SOLID BRASS 90° FULL-FLOW NPT SWIVEL** that screws directly on 1" solid steel axle, for simple seal maintenance and fast and easy hose installation

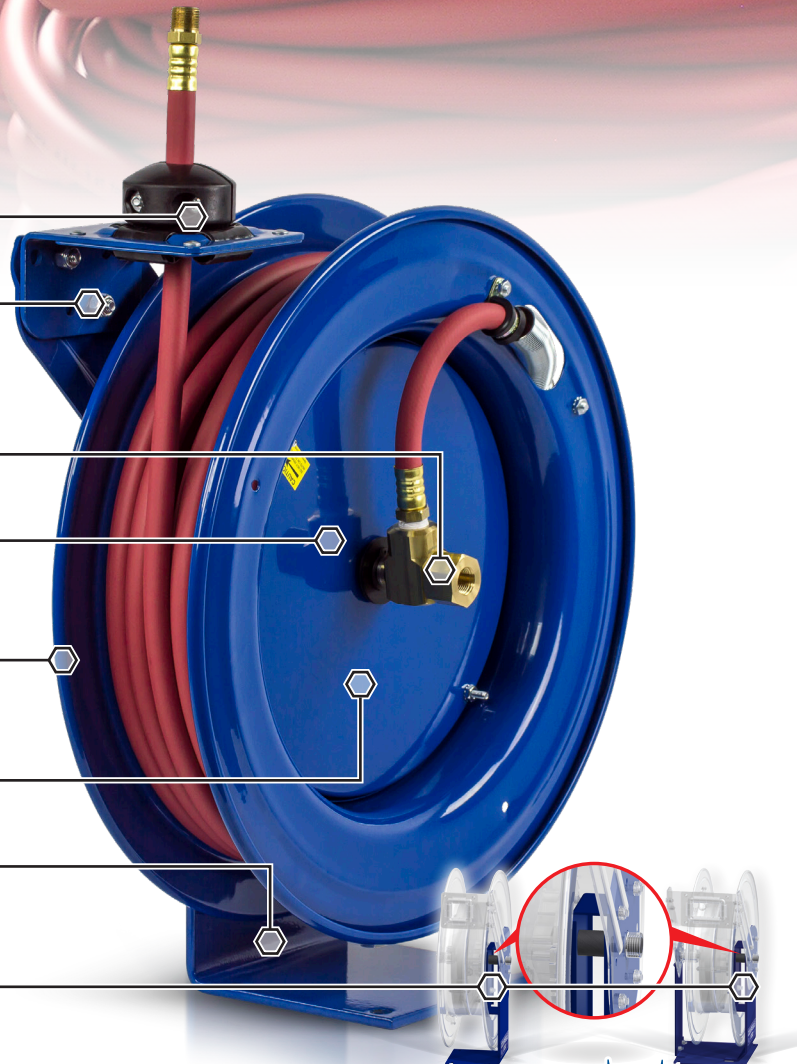
**HIGH QUALITY STEEL CONSTRUCTION** with our durable CPC™ powder coat finish

**HEAVY DUTY SPUN DISCS** with rolled edges for greater strength, made with first of it's kind CNC robotic spin cell

**ENCLOSED FACTORY TUNED AND MATCHED CARTRIDGE-STYLE SPRING MOTOR**, easily removed for safe & convenient replacement

**HEAVY GAUGE 1/4" STEEL BASE & SUPPORT POST** for maximum stability

**DUAL AXLE SUPPORT WITH SUPER HUB™** increased reel strength for more demanding applications - On SH and T Series only



### POSSIBLE FIELDS OF APPLICATION

- Hose Shops
- Workshops
- Machine Shops
- Bench Applications
- Manufacturing Plants & Facilities
- Maintenance, Repair & Operations



[WWW.COXREELS.COM](http://WWW.COXREELS.COM)  
[INFO@COXREELS.COM](mailto:INFO@COXREELS.COM)

5865 S. ASH AVE  
TEMPE, AZ 85283

800.COX.REEL  
480.820.6396

#COXREELS





## LG SERIES



- External fluid path with machined from solid brass 90° full-flow NPT swivel inlet
- Swivel Seals: NITRILE
- Compact & lightweight spring driven hose reel save space & facilitate workplace organization

MODEL	I.D.	FT.	PSI	APRX. LBS.	W x H x L
LG-LP-115	1/4"	15	300	9	5 1/4 x 10 5/8 x 10 1/2"
LG-LP-125	1/4"	25	300	11	5 1/4 x 10 5/8 x 10 1/2"
LG-LP-310	3/8"	10	300	9	5 1/4 x 10 5/8 x 10 1/2"
LG-LP-320	3/8"	20	300	11	5 1/4 x 10 5/8 x 10 1/2"

## P SERIES



- External fluid path with machined from solid brass 90° full-flow NPT swivel inlet (Zinc plated steel swivel on HP models)
- Swivel Seals: NITRILE
- Sturdy single pedestal spring driven reel with space saving design facilitates workplace organization
- Available in Medium & High Pressure

MODEL	EZ-Coil® Safety Line	I.D.	FT.	PSI	APRX. LBS.	W x H x L
P-LP-125	EZ-P-LP-125	1/4"	25	300	27	5 7/8 x 14 7/8 x 13 1/2"
P-LP-150	EZ-P-LP-150	1/4"	50	300	40	6 3/4 x 18 5/8 x 17 1/2"
P-LP-325	EZ-P-LP-325	3/8"	25	300	28	6 1/2 x 14 7/8 x 13 1/2"
P-LP-350	EZ-P-LP-350	3/8"	50	300	43	6 3/4 x 18 5/8 x 17 1/2"
P-LP-425	-	1/2"	25	300	44	7 x 18 5/8 x 17 1/2"
P-LP-450	EZ-P-LP-450	1/2"	50	300	48	7 x 18 5/8 x 17 1/2"

## SH, MP & HP SERIES - EQUIPPED WITH SUPER HUB™



- External fluid path with machined from solid brass 90° full-flow NPT swivel inlet (Zinc plated steel swivel on HP models)
- Swivel Seals: NITRILE
- Sturdy single pedestal spring driven reel features Coxreels' exclusive Super Hub™ dual axle support system

Model Shown: MP Series



MODEL	EZ-Coil® Safety Line	I.D.	FT.	PSI	APRX. LBS.	W x H x L
SH-N-350	EZ-SH-350	3/8"	50	300	50	8 1/4 x 21 1/4 x 19 1/2"
SH-N-375	EZ-SH-375	3/8"	75	300	68	8 3/4 x 21 1/4 x 24"
SH-N-450	EZ-SH-450	1/2"	50	300	54	8 1/4 x 21 1/4 x 19 1/2"
SH-N-475	EZ-TSH-475	1/2"	75	300	68	8 3/4 x 25 1/2 x 24"
MP-N-350	EZ-MP-350	3/8"	50	3,000	65	8 1/4 x 21 1/4 x 19 1/2"
MP-N-450	EZ-MP-450	1/2"	50	2,500	67	8 3/4 x 25 1/2 x 19 1/2"
HP-N-150	EZ-HP-150	1/4"	50	5,000	64	8 3/4 x 25 1/2 x 19 1/2"
HP-N-350	EZ-HP-350	3/8"	50	4,000	65	9 1/4 x 25 1/2 x 19 1/2"

## T SERIES - EQUIPPED WITH SUPER HUB™



- External fluid path with machined from solid brass 90° full-flow NPT swivel inlet (Zinc plated steel swivel on HP models)
- Swivel Seals: NITRILE
- Sturdy dual pedestal reel features Coxreels' exclusive Super Hub™ dual axle support system



MODEL	EZ-Coil® Safety Line	I.D.	FT.	PSI	APRX. LBS.	W x H x L
TSH-N-350	EZ-TSH-350	3/8"	50	300	61	9 3/8 x 21 1/4 x 19 1/2"
TSH-N-375	EZ-TSH-375	3/8"	75	300	82	9 3/8 x 25 1/2 x 24"
TSH-N-3100	EZ-TSH-3100	3/8"	100	300	85	9 3/8 x 25 1/2 x 24"
TSH-N-450	EZ-TSH-450	1/2"	50	300	63	9 3/8 x 21 1/4 x 19 1/2"
TSH-N-475	EZ-TSH-475	1/2"	75	300	82	9 3/8 x 25 1/2 x 24"
TSH-N-4100	EZ-TSH-4100	1/2"	100	300	95	9 3/8 x 25 1/2 x 24"
TMP-N-350	EZ-TMP-350	3/8"	50	3,000	74	9 3/8 x 21 1/4 x 19 1/2"
TMP-N-450	EZ-TMP-450	1/2"	50	2,500	77	9 3/8 x 21 1/4 x 19 1/2"
THP-N-150	EZ-THP-150	1/4"	50	5,000	74	9 3/8 x 21 1/4 x 19 1/2"
THP-N-350	EZ-THP-350	3/8"	50	4,000	78	9 3/8 x 21 1/4 x 19 1/2"

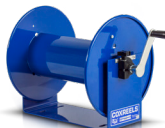
## C SERIES - AIR / WATER - DUAL PURPOSE HOSE REELS



- Two external fluid path with machined from solid brass 90° full-flow NPT swivel inlet (Zinc plated steel swivel on HP models)
- Swivel Seals: NITRILE
- Compact two reel assembly for dual hose applications, each reel operates independently

MODEL	I.D.	FT.	PSI	APRX. LBS.	W x H x L
C-LP-325-325	3/8"	25	300	67	11 1/2 x 18 5/8 x 17"
C-LP-335-335	3/8"	35	300	69	11 1/2 x 18 5/8 x 17"
C-LP-350-350	3/8"	50	300	78	11 1/2 x 18 5/8 x 17"
C-LP-425-425	1/2"	25	300	70	11 1/2 x 18 5/8 x 17"

## 100 SERIES



- External fluid path with machined from solid brass 90° full-flow NPT swivel inlet
- Swivel Seals: NITRILE
- Solid one piece, heavy gauge steel "U" shaped frame
- Open drum design for no hassle hose wrap

MODEL	I.D.	FT.	PSI	APRX. LBS.	W x H x L
112-3-50	3/8"	50	4,000	15	14 1/2 x 13 x 12"
112-3-100	3/8"	100	4,000	19	18 1/4 x 13 x 12"
112-3-150	3/8"	150	4,000	21	22 3/4 x 13 x 12"
117-3-250	3/8"	250	4,000	30	18 1/4 x 18 x 17"
117-4-75	1/2"	75	4,000	21	22 3/4 x 13 x 12"
117-4-225	1/2"	225	4,000	31	22 3/4 x 18 x 17"

## 1125 SERIES



- External fluid path with machined from solid brass 90° full-flow NPT swivel inlet (Nickel plated steel swivel on 1" models)
- Swivel Seals: NITRILE (AFLAS on 1" models)
- Exclusive low profile outlet riser & open drum slot design for flat smooth hose wrap
- All welded steel "A" frame construction for superior reel structure

MODEL	MOTOR OPTION	I.D.	FT.	PSI	APRX. LBS.	W x H x L
1125-4-100	Electric Motor Options Available	1/2"	100	3,000	36	19 1/2 x 18 3/4 x 17 5/8"
1125-4-200		1/2"	200	3,000	39	25 1/2 x 18 3/4 x 17 5/8"
1125-4-325		1/2"	325	3,000	48	31 1/2 x 18 3/4 x 17 5/8"
1125-4-500		1/2"	500	3,000	58	41 1/2 x 18 3/4 x 17 5/8"
1125-5-100		3/4"	100	3,000	42	26 3/4 x 18 3/4 x 17 5/8"
1125-5-175		3/4"	175	3,000	50	32 3/4 x 18 3/4 x 17 5/8"
1125-5-250		3/4"	250	3,000	59	42 3/4 x 18 3/4 x 17 5/8"
1125-6-50		1"	50	3,000	55	32 x 18 1/2 x 17 5/8"
1125-6-100		1"	100	3,000	69	44 1/2 x 18 1/2 x 17 5/8"

## 1175 SERIES



- External fluid path with machined from solid brass 90° full-flow NPT swivel inlet
- Swivel Seals: AFLAS
- Exclusive low profile outlet riser, open drum slot design for flat smooth hose wrap. All welded steel "A" frame construction for superior reel structure

MODEL	MOTOR OPTION	I.D.	FT.	PSI	APRX. LBS.	W x H x L
1175-6-50	Electric Motor Options Available	1"	50	3,000	67	24 1/8 x 26 1/8 x 24"
1175-6-100		1"	100	3,000	70	28 1/8 x 26 1/8 x 24"
1175-6-150		1"	150	3,000	75	32 1/8 x 26 1/8 x 24"
1175-6-200		1"	200	3,000	83	36 5/8 x 26 1/8 x 24"

This selection only represents a sample of products applicable in this industry. Please visit us online or consult the factory for more product options.

### CHOICE OF MOTORS



CF-HR-001

[WWW.COXREELS.COM](http://WWW.COXREELS.COM)  
[INFO@COXREELS.COM](mailto:INFO@COXREELS.COM)

5865 S. ASH AVE  
 TEMPE, AZ 85283

800.COX.REEL  
 480.820.6396

#COXREELS

