

Sewage & DRAIN

PROFESSIONAL GRADE FEATURES



HEAVY DUTY SOLID SPUN DISCS WITH ROLLED EDGES - not stamped, made with first of its kind CNC robotic spinning cell

LOW PROFILE RISER & OPEN DRUM SLOT for smooth, even hose wraps

EXTERNAL FLUID PATH WITH IN-LINE SWIVELS, electroless nickel plated steel in a in-line fluid path with full flow design



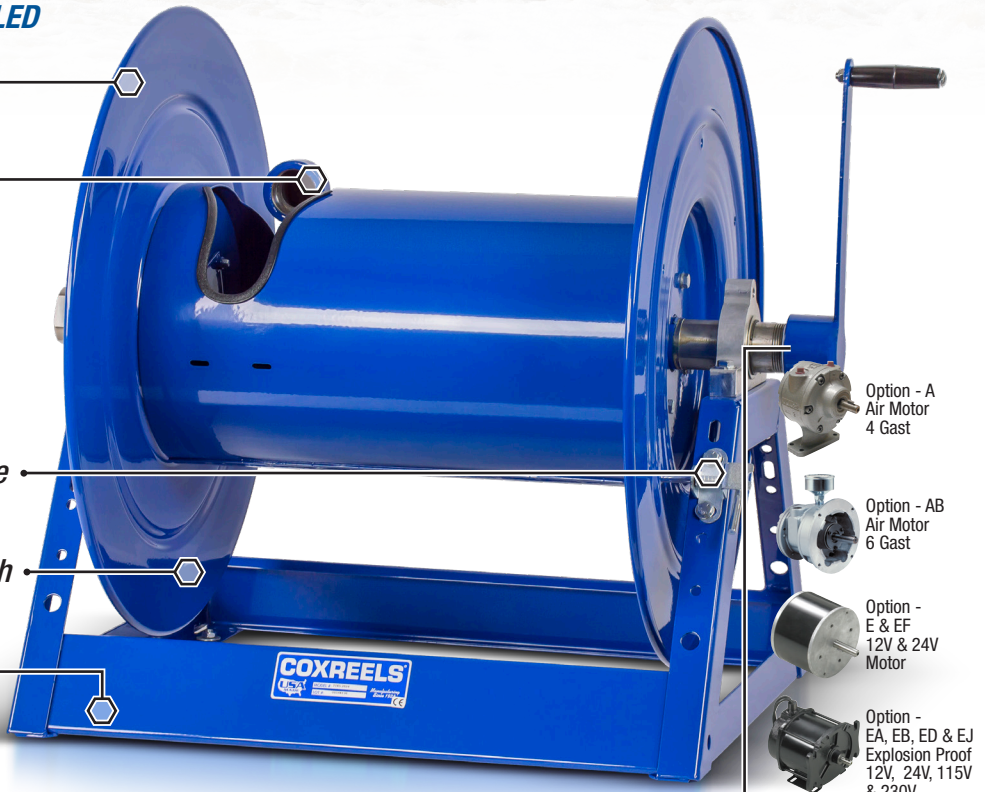
- Viewable on opposite side

LONG-HANDLED LOCKING PIN to secure reel from rotation during transport or storage

HIGH QUALITY STEEL CONSTRUCTION with our durable CPC™ powder coated finish

ONE PIECE ALL CNC ROBOTICALLY WELDED steel "A" frame construction

The electric version features reliable **CHAIN / SPROCKET** rewind system with **YOUR CHOICE OF MOTOR**



- Option - A
Air Motor
4 Gast
- Option - AB
Air Motor
6 Gast
- Option - E & EF
12V, 24V
Motor
- Option - EA, EB, ED & EJ
Explosion Proof
12V, 24V, 115V
& 230V
- Option - H
Hydraulic
Motor

POSSIBLE FIELDS OF APPLICATION

- Pressure Washing
- Pipeline Maintenance
- High Pressure Washdown
- Water Jetting
- Sewer & Drain Cleaning
- Water Blasting
- High Volume Delivery



WWW.COXREELS.COM
INFO@COXREELS.COM

5865 S. ASH AVE
TEMPE, AZ 85283

800.COX.REEL
480.820.6396

#COXREELS



Sewage & Drain



P SERIES

- External fluid path with machined from solid brass 90° full-flow NPT swivel inlet (Zinc plated steel swivel on HP models)
- Swivel Seals: NITRILE
- Sturdy single pedestal spring driven reel with space saving design facilitates workplace organization

MODEL	EZ-Coil® Safety Line	I.D.	FT.	PSI	APRX. LBS.	W x H x L
P-MP-325	-	3/8"	25	3,000	49	7 x 18 5/8 x 17 1/8"
P-MP-425	EZ-P-MP-425	1/2"	25	2,500	49	7 x 18 5/8 x 17 1/8"
P-HP-125	EZ-P-HP-125	1/4"	25	5,000	48	7 x 18 5/8 x 17 1/8"
P-HP-325	EZ-P-HP-325	3/8"	25	4,000	49	7 x 18 5/8 x 17 1/8"

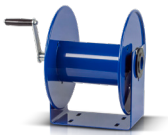


T SERIES - EQUIPPED WITH SUPER HUB™

- External fluid path with machined from solid brass 90° full-flow NPT swivel inlet (Nickel plated steel swivel on HP models)
- Swivel Seals: NITRILE
- Sturdy dual pedestal reel features Coxreels' exclusive Super Hub™ dual axle support system



MODEL	EZ-Coil® Safety Line	I.D.	FT.	PSI	APRX. LBS.	W x H x L
TMP-N-350	EZ-TMP-350	3/8"	50	3,000	74	9 3/8 x 21 1/4 x 19 1/2"
TMP-N-3100	-	3/8"	100	3,000	106	9 3/8 x 25 1/2 x 24"
TMP-N-450	EZ-TMP-450	1/2"	50	2,500	77	9 3/8 x 21 1/4 x 19 1/2"
TMP-N-4100	-	1/2"	100	2,500	106	9 3/8 x 25 1/2 x 24"
THP-N-150	EZ-THP150	1/4"	50	5,000	74	9 3/8 x 21 1/4 x 19 1/2"
THP-N-350	EZ-THP-350	3/8"	50	4,000	78	9 3/8 x 21 1/4 x 19 1/2"



112Y SERIES

- Professional grade, compact & lightweight hand crank reels to store & maintain hose, cord, cable, wire, rope, tape, chain and
- Open drum design for no hassle hose wrap
- Adjustable tension brake to prevent "free-wheeling" during operation, transport or storage.

MODEL	CABLE I.D.				HOSE I.D.		APRX. LBS.	W x H x L
	8/3	10/3	12/3	16/3	3/8"	1/2"		
112Y-4	40	75	150	300	50	30	10	12 1/4 x 13 1/8 x 12"
112Y-8	80	135	300	-	100	55	14	15 3/4 x 13 3/8 x 12"
112Y-12	150	225	-	-	150	75	20	20 1/4 x 13 3/8 x 12"
112Y-8-CM	80	135	300	-	100	55	13	16 3/8 x 14 3/4 x 13"
112Y-12-CM	150	225	-	-	150	75	19	20 7/8 x 14 3/4 x 13"



1125 SERIES

- External fluid path with machined from solid brass 90° full-flow NPT swivel inlet (Nickel plated steel swivel on 1" models)
- Swivel Seals: NITRILE (AFLAS on 1" models)
- Exclusive low profile outlet riser & open drum slot design for flat smooth hose wrap
- All welded steel "A" frame construction for superior reel structure

MODEL	MOTOR OPTION	I.D.	FT.	PSI	APRX. LBS.	W x H x L
1125-4-100	Electric Motor Options Available	1/2"	100	3,000	36	19 1/2 x 18 3/4 x 17 5/8"
1125-4-200		1/2"	200	3,000	39	25 1/2 x 18 3/4 x 17 5/8"
1125-4-325		1/2"	325	3,000	48	31 1/2 x 18 3/4 x 17 5/8"
1125-5-100		3/4"	100	3,000	42	26 3/4 x 18 3/4 x 17 5/8"
1125-5-175		3/4"	175	3,000	50	32 3/4 x 18 3/4 x 17 5/8"
1125-5-200		3/4"	200	3,000	55	38 3/4 x 18 3/4 x 17 5/8"
1125-5-250		3/4"	250	3,000	59	42 3/4 x 18 3/4 x 17 5/8"
1125-6-100		1"	100	3,000	69	44 1/2 x 18 1/2 x 17 5/8"



HP1125 SERIES

- External fluid path with electroless nickel plated steel 90° full-flow NPT swivel inlet
- Swivel Seals: AFLAS
- Exclusive low profile outlet riser (Zinc plated on 1/2" models) & open drum slot design for flat smooth hose wrap
- All welded steel "A" frame construction for superior reel structure

MODEL	MOTOR OPTION	I.D.	FT.	HP PSI	APRX. LBS.	W x H x L
HP1125-4-100	Electric Motor Options Available	1/2"	100	5,000	36	19 1/2 x 18 3/4 x 17 5/8"
HP1125-4-200		1/2"	200	5,000	39	25 1/2 x 18 3/4 x 17 5/8"
HP1125-4-325		1/2"	325	5,000	48	31 1/2 x 18 3/4 x 17 5/8"
HP1125-5-100		3/4"	100	5,000	42	26 3/4 x 18 3/4 x 17 5/8"
HP1125-5-175		3/4"	175	5,000	50	32 3/4 x 18 3/4 x 17 5/8"
HP1125-5-200		3/4"	200	5,000	55	38 3/4 x 18 3/4 x 17 5/8"
HP1125-5-250		3/4"	250	5,000	59	42 3/4 x 18 3/4 x 17 5/8"



1175 SERIES

- External fluid path with machined from solid brass 90° full-flow NPT swivel inlet
- Swivel Seals: AFLAS
- Exclusive low profile outlet riser, open drum slot design for flat smooth hose wrap. All welded steel "A" frame construction for superior reel structure

MODEL	MOTOR OPTION	I.D.	O.D.	FT.	PSI	APRX. LBS.	W x H x L
1175-6-50	Electric Motor Options Available	1"	1 7/16"	50	3,000	67	24 1/8 x 26 1/8 x 24"
1175-6-100		1"	1 7/16"	100	3,000	70	28 1/8 x 26 1/8 x 24"
1175-6-150		1"	1 7/16"	150	3,000	75	32 1/8 x 26 1/8 x 24"
1175-6-200		1"	1 7/16"	200	3,000	83	36 5/8 x 26 1/8 x 24"



1185 SERIES

- External fluid path with in-line aluminium straight, full flow NPT swivel inlet
- Swivel Seals: NITRILE
- Exclusive low profile outlet riser, open drum slot design for flat smooth hose wrap. All welded steel "A" frame construction for superior reel structure

MODEL	MOTOR OPTION	I.D.	O.D.	FT.	PSI	APRX. LBS.	W x H x L
1185-1124	Electric Motor Options Available	1 1/2"	2 1/16"	50	600	76	25 x 26 x 24"
1185-1524		1 1/2"	2 1/16"	75	600	81	29 x 26 x 24"
1185-2024		1 1/2"	2 1/16"	100	600	94	33 1/2 x 26 x 24"
1185-2528		1 1/2"	2 1/16"	150	600	122	38 1/2 x 30 x 28"

HIGH PRESSURE 1185 SERIES

- External fluid path with electroless nickel plated steel 90° full-flow NPT swivel inlet
- Swivel Seals: AFLAS
- Exclusive low profile outlet riser, open drum slot design for flat smooth hose wrap. All welded steel "A" frame construction for superior reel structure

MODEL	MOTOR OPTION	I.D.	O.D.	FT.	PSI	APRX. LBS.	W x H x L
1185-1124-BUXX	Electric Motor Options Available	1 1/2"	2 1/16"	50	3,000	76	25 x 26 x 24"
1185-1524-BUXX		1 1/2"	2 1/16"	75	3,000	81	29 x 26 x 24"
1185-2024-BUXX		1 1/2"	2 1/16"	100	3,000	94	33 1/2 x 26 x 24"
1185-2528-BUXX		1 1/2"	2 1/16"	150	3,000	122	38 1/2 x 30 x 28"

CHOICE OF MOTORS



This selection only represents a sample of products applicable in this industry. Please visit us online or consult the factory for more product options.

CF-SD-001

WWW.COXREELS.COM
INFO@COXREELS.COM

5865 S. ASH AVE
TEMPE, AZ 85283

800.COX.REEL
480.820.6396

#COXREELS

