

Utility & FLEET

PROFESSIONAL GRADE FEATURES



ADJUSTABLE SOLID RUBBER HOSE STOP
for lead length positioning

VERSATILE GUIDE ARM adjusts to wall,
floor, ceiling & vehicle mounting

**EXTERNAL FLUID PATH WITH FULL-FLOW
BRASS NPT SWIVEL** that screws directly on
1" solid steel axle, for simple seal maintenance
and fast and easy hose installation

- Viewable on opposite side

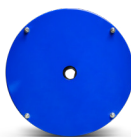


HIGH QUALITY STEEL CONSTRUCTION with our
durable CPC™ powder coat finish

HEAVY DUTY SPUN DISCS WITH ROLLED EDGES
- not stamped, for greater strength, made with
first of its kind CNC robotic spinning cell

**ENCLOSED FACTORY TUNED AND MATCHED
CARTRIDGE-STYLE SPRING MOTOR**, easily
removed for safe & convenient replacement

- Viewable on opposite side



**HEAVY GAUGE 1/4" STAINLESS STEEL BASE
& SUPPORT POST** for maximum stability

**TRIPLE AXLE SUPPORT WITH SUPER HUB™
& A FULL FRAME** increased reel strength
for more demanding applications

Only on T Series. SH Series features dual axle support

POSSIBLE FIELDS OF APPLICATION

- Air Compressor System
- Oil Dispensing System
- Electrode & Lead Grounding System
- Air/Water Services
- Hydraulics
- Service/Mechanic Trucks
- Antifreeze Dispensing System
- Oxy/Acetylene System
- Lube Skids & Trucks



WWW.COXREELS.COM
INFO@COXREELS.COM

5865 S. ASH AVE
TEMPE, AZ 85283

800.COX.REEL
480.820.6396

#COXREELS





P SERIES

- External fluid path with machined from solid brass 90° full-flow NPT swivel inlet (Zinc plated steel swivel on HP models)
- Swivel Seals: NITRILE
- Sturdy single pedestal spring driven reel with space saving design facilitates workplace organization

MODEL	EZ-Coil® Safety Line	I.D.	FT.	PSI	APRX. LBS.	W x H x L
P-LP-330	EZ-P-LP-330	3/8"	30	300	37	6 3/4 x 18 5/8 x 17 1/8"
P-LP-350	EZ-P-LP-350	3/8"	50	300	43	6 3/4 x 18 5/8 x 17 1/8"
P-LP-430	EZ-P-LP-430	1/2"	30	300	45	7 x 18 5/8 x 17 1/8"
P-LP-450	EZ-P-LP-450	1/2"	50	300	48	7 x 18 5/8 x 17 1/8"
P-MP-330	-	3/8"	30	3,000	51	7 x 18 5/8 x 17 1/8"
P-MP-430	EZ-P-MP-430	1/2"	30	2,500	51	7 x 18 5/8 x 17 1/8"
P-HP-130	EZ-P-HP-125	1/4"	30	5,000	50	7 x 18 5/8 x 17 1/8"
P-HP-330	-	3/8"	30	4,000	51	7 x 18 5/8 x 17 1/8"



SH, MP & HP SERIES - EQUIPPED WITH SUPER HUB™

- External fluid path with machined from solid brass 90° full-flow NPT swivel inlet (Zinc plated steel swivel on HP models)
- Swivel Seals: NITRILE
- Sturdy single pedestal spring driven reel features Coxreels' exclusive Super Hub™ dual axle support system

MODEL	EZ-Coil® Safety Line	I.D.	FT.	PSI	APRX. LBS.	W x H x L
SH-N-350	EZ-SH-350	3/8"	50	300	50	8 1/4 x 21 1/4 x 19 1/2"
SH-N-450	EZ-SH-450	1/2"	50	300	54	8 1/4 x 21 1/4 x 19 1/2"
MP-N-350	EZ-MP-350	3/8"	50	3,000	65	8 1/4 x 21 1/4 x 19 1/2"
MP-N-450	EZ-MP-450	1/2"	50	2,500	67	8 3/4 x 25 1/2 x 19 1/2"
HP-N-150	EZ-HP-150	1/4"	50	5,000	64	8 3/4 x 25 1/2 x 19 1/2"
HP-N-350	EZ-HP-350	3/8"	50	4,000	65	9 1/4 x 25 1/2 x 19 1/2"



T SERIES - EQUIPPED WITH SUPER HUB™

- External fluid path with machined from solid brass 90° full-flow NPT swivel inlet (Zinc plated steel swivel on HP models)
- Swivel Seals: NITRILE
- Sturdy dual pedestal reel features Coxreels' exclusive Super Hub™ dual axle support system
- Available in Medium & High Pressure
- TSHF MODELS: Fuel dispensing hose designed to convey non-aromatic fuels including diesel, kerosene, fuel oil & heating oil.

MODEL	EZ-Coil® Safety Line	I.D.	FT.	PSI	APRX. LBS.	W x H x L
TSH-N-350	EZ-TSH-350	3/8"	50	300	61	9 3/8 x 21 1/4 x 19 1/2"
TSH-N-375	EZ-TSH-375	3/8"	75	300	82	9 3/8 x 25 1/2 x 24"
TSH-N-3100	EZ-TSH-3100	3/8"	100	300	85	9 3/8 x 25 1/2 x 24"
TSH-N-450	EZ-TSH-450	1/2"	50	300	63	9 3/8 x 21 1/4 x 19 1/2"
TSH-N-475	EZ-TSH-475	1/2"	75	300	82	9 3/8 x 25 1/2 x 24"
TSH-N-4100	EZ-TSH-4100	1/2"	100	300	95	9 3/8 x 25 1/2 x 24"
TSHF-N-550	EZ-TSHF-550	3/4"	50	300	91	10 x 25 1/2 x 24"
TSHF-N-575	-	3/4"	75	300	105	12 x 25 1/2 x 24"
TSHF-N-635	-	1"	35	300	95	9 7/8 x 21 7/8 x 20 3/8"
TSHF-N-650	-	1"	50	300	101	12 x 25 1/2 x 24"



P-WC SERIES

- External, easily accessible heavy gauge CPC™ powder coated steel components cover for simple slip ring routine maintenance
- Single pedestal reel with space saving design facilitates workplace organization

MODEL	FT.	TYPE	VOLT.	AMPS.	APRX. LBS.	W x H x L
P-WC17-5002	50	2 GA	600	225	56	11 x 14 1/2 x 13 3/4"
P-WC17-5001	50	1 GA	600	300	60	11 x 14 1/2 x 13 3/4"
P-WC17-5020	50	2/O	600	450	68	11 x 14 1/2 x 13 3/4"
P-WC17-5010	50	1/O	600	350	64	11 x 14 1/2 x 13 3/4"



MPD & TDMP SERIES

- External fluid path with machined from solid brass 90° full-flow NPT swivel inlet (Zinc plated steel swivel on HP models)
- Swivel Seals: TEFLON
- One-sided supply /return hookup

MODEL	I.D.	FT.	PSI	APRX. LBS.	W x H x L
MPD-N-330	3/8"	30	3,000	78	11 1/2 x 21 1/8 x 19 1/2"
MPD-N-430	1/2"	30	2,500	79	11 1/2 x 21 1/8 x 19 1/2"
TDMP-N-350	3/8"	50	3,000	104	11 5/8 x 18 5/8 x 17 5/8"
TDMP-N-450	1/2"	50	2,500	106	11 5/8 x 18 5/8 x 17 5/8"



SD SERIES

- Available with 7 strand x 7 wire galvanized steel or stainless steel cable. Suffix model -1 with stainless steel cable
- High visibility orange vinyl cable cover
- Compact static discharge cable reel available in spring rewind or direct hand crank retraction
- Non corrosive stainless steel spring, pawl & zinc plated ratchet

MODEL	EZ-Coil® Safety Line	O.D.	FT.	APRX. LBS.	W x H x L
SD-35	EZ-SD-35	5/32"	35	18	3 7/8 x 11 1/2 x 11"
SD-50	EZ-SD-50	5/32"	50	20	3 7/8 x 11 1/2 x 11"
SD-75	EZ-SD-75	5/32"	75	31	4 x 15 x 14 1/2"
SD-100	EZ-SD-100	5/32"	100	32	4 x 15 x 14 1/2"
SDH-100	-	5/32"	100	24	5 3/4 x 11 1/2 x 11"
SDH-200	-	5/32"	200	28	5 3/4 x 11 1/2 x 11"



P-W & SHW SERIES

- External fluid path with 90° full-flow dual ported brass swivel offering both connections from the same side of the reel
- Single pedestal reel with space saving design facilitates workplace organization
- Available in "T" Grade welding hose

MODEL	EZ-Coil® Safety Line	I.D.	FT.	PSI	APRX. LBS.	W x H x L
P-W-125	EZ-P-W-125	1/4"	25	200	46	8 1/2 x 18 5/8 x 17"
SHW-N-150	EZ-SHW-150	1/4"	50	200	64	10 1/4 x 21 1/4 x 19 1/2"
SHW-N-1100	EZ-SHW-1100	1/4"	100	200	84	10 1/4 x 25 1/2 x 19 1/2"



1125WCL SERIES

- Drum-located slip ring assembly for simple routine maintenance
- All welded steel "A" frame construction to strengthen the reel structure
- Permanently lubricated self-aligning pillow block bearings for trouble-free & smooth rotation

MODEL	CABLE TYPE & CAPACITY				APRX. LBS.	W x H x L
	#2	#1	#1/O	#2/O		
1125WCL-6-C	300	250	200	150	38	18 3/4 x 18 1/2 x 17 1/2"
1125WCL-12-C	600	500	400	300	45	24 3/4 x 18 1/2 x 17 1/2"



112Y SERIES

- Professional grade, compact & lightweight hand crank reels to store & maintain hose, cord, cable, wire, rope, tape, chain and
- Open drum design for no hassle hose, cord or cable wrap
- Open port for easy pass trough for any type of hose, cord or cable

MODEL	CABLE I.D.				HOSE I.D.		APRX. LBS.	W x H x L
	8/3	10/3	12/3	16/3	3/8"	1/2"		
112Y-4	40	75	150	300	50	30	10	12 1/4 x 13 1/8 x 12"
112Y-8	80	135	300	-	100	55	14	15 3/4 x 13 1/8 x 12"
112Y-12	150	225	-	-	150	75	20	20 1/4 x 13 1/8 x 12"

This selection only represents a sample of products applicable in this industry. Please visit us online or consult the factory for more product options.

CF-UF-001