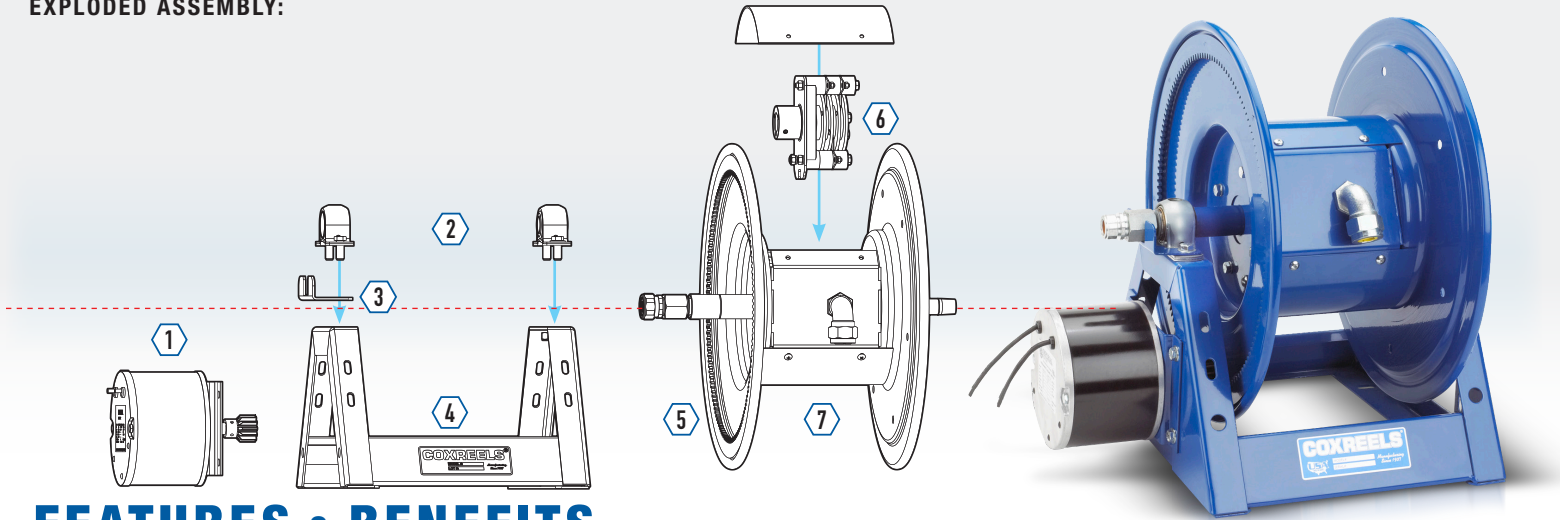




# FEATURE FOCUS MOTORIZED CORD REEL

FF-MDCR-01

## EXPLODED ASSEMBLY:



## FEATURES & BENEFITS

### STEEL CONSTRUCTION

High-Quality steel construction provides superior strength and durability for heavy-duty applications in commercial and industrial settings.



### POWDER COAT

CPC™ Powder Coat. Long lasting, chip resistant and rust inhibiting CPC™ powder coat finish seals all steel components for maximum corrosion resistance.

### 1 CHOICE OF MOTOR

Customize reel to specific application:

<b>Motor A</b>	Air - 4 VANE Aluminum Body Air Motor	8 lbs
<b>Motor AB</b>	Air - 6 VANE Aluminum Body Air Motor	8 lbs
<b>Motor E</b>	Elec. - 12V DC 1/3 HP Reversible	13 lbs
<b>Motor EF</b>	Elec. - 24V DC 1/3 HP Reversible	13 lbs
<b>Motor EB</b>	24v DC 1/2 HP EXP. Explosion Proof Reversible	26 lbs
<b>Motor ED</b>	12v DC 1/2 HP EXP. Explosion Proof Reversible	26 lbs
<b>Motor EA</b>	115V AC 1/2 HP EXP. Explosion Proof Reversible, AC Rectified	26 lbs
<b>Motor EJ</b>	230V AC 1/2 HP EXP. Explosion Proof Reversible, AC Rectified	26 lbs
<b>Motor H</b>	Hydraulic End Ported 9/16-18 UNF	6 lbs



### 2 PILLOW BLOCK BEARINGS

Pillow Block Bearings – Sturdy permanently lubricated and self-aligning pillow block bearings for smooth rotation and trouble-free operation.

- Robust lubricated horizontal surface mount bearings on 1-1/2" and 2" hose I.D. models.



### 3 CABLE KEEPER

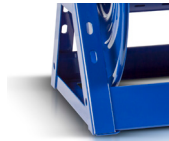
Integrated anti-rotation cable keeper prevents the 5 foot lead cable from whipping or twisting.



### 4 "A" FRAME

Sturdy one piece, all CNC robotically welded 1/4" steel "A" frame base, not bolted, for superior reel structure and narrow width for convenient installation in restricted spaces

Mounting Pattern – Mounting pattern located in the steel base for easy reel installation and detachment.



### 5 DIRECT DRIVE MOTOR

A solid steel halo is welded to the disc for a safe and reliable direct gear drive retraction on 1125 and 1275 Series.

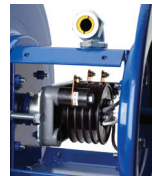
- Lubricated chain and zinc plated steel sprocket on larger motorized 1175, 1185 and 1195 Series.



### 6 SLIP RING ASSEMBLY

Drum-located slip ring assembly with easy to access removable panel for simple routine maintenance.

- Available with 30AMP or 45AMP, 600V rated slip ring assembly.



### 7 CNC SPUN DISCS

Heavy duty CNC robotically spun and ribbed discs with rolled edges for greater strength, durability, cord protection and operator safety.



## ACCESSORIES & UPGRADES



ROLLER  
BRACKETS



PORTABLE  
HOSE REEL



SPEED  
CONTROLLER



GEAR  
GUARDS



[WWW.COXREELS.COM](http://WWW.COXREELS.COM)  
[INFO@COXREELS.COM](mailto:INFO@COXREELS.COM)

5865 S. ASH AVE  
TEMPE, AZ 85283

800.COX.REEL  
480.820.6396

#COXREELS

