



THE POLY-PRO™ REEL

Series: A-A10-350 & A-E10-450

READ CAREFULLY BEFORE ATTEMPTING TO ASSEMBLE, INSTALL, OPERATE OR MAINTAIN THE PRODUCT DESCRIBED. FAILURE TO COMPLY WITH INSTRUCTIONS COULD RESULT IN PERSONAL INJURY AND/OR PROPERTY DAMAGE!

THANK YOU FOR PURCHASING A COXREELS HOSE REEL.

Please read and retain this instruction sheet to assist you in installation, operation and maintenance of this product.

Description

Coxreels Poly-Pro™ Hose Reels are spring driven, auto-rewind reels built using the highest quality materials. Each Reel is supplied standard with a Locking Ratchet to hold the desired length of hose.

Installation

Note: Reels should not be installed above 15 feet from the floor.

1. You will need a set of appropriate mounting hardware; 4 (four) 5/16" bolts, washers and nuts per reel.
2. Attach the Mounting Bracket (posts are to point up) to the wall/post using the mounting hardware. Secure and tighten all bolts and nuts.
3. If desired, install the handle to the reel using the two (2) #8 x 1-3/4" screws as supplied. Slide the hose reel onto the mounting bracket and secure with the safety pin.
4. Flush some product through the system before connecting inlet hose to the source.
5. Apply thread sealant to Inlet Hose threads and connect the end to Reel Inlet. Connect other end to supply line.
6. Flush some product through the system and reel before connecting outlet nozzle, gun or tool.
7. Apply thread sealant to Outlet Hose Fitting. Connect outlet nozzle, gun or tool. Check system for leaks, and Hose Reel for correct operation (see "Operation").
8. If Hose Stopper adjustment is required, latch the Hose at approximately the required length, loosen stopper bolts, move stopper to desired position and tighten stopper bolts. Unlatch the Hose.

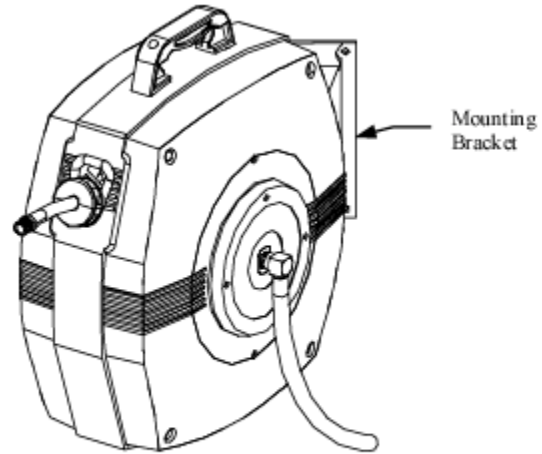


Figure 1

Operation

1. Check Reel for correct operation by slowly pulling out the Hose. A "clicking" noise will be heard after each half revolution of the Drum.
2. **To LATCH** the Reel, pull out the Hose and allow it to retract after the first, second or third "click" is heard.
3. **To UNLATCH**, slowly pull the Hose until the "clicking" noise stops, then allow the Hose to retract. The Hose Stopper should rest against the Hose Guide.

DO NOT ALLOW HOSE TO RETRACT WITHOUT RESTRAINING RECOIL SPEED. NEVER LET GO OF THE HOSE WHEN REWINDING.

4. Periodically check the Hose for wear, and the Swivel for possible leaks.

Trouble Shooting Guide

TROUBLE	CAUSE	REMEDY
HOSE WILL NOT FULLY RETRACT	a) Outlet nozzle, gun or tool is too heavy. b) Spring is fatigued. c) Replacement Hose is too long.	a) Add spring tension. See "Spring Tension Adjustment". b) Add spring tension. See "Spring Tension Adjustment". Replace Sub 100 Assembly if required. c) Refer to "Replacement of Hose" requirements.
HOSE WILL NOT RETRACT AT ALL	Spring has lost all tension or has possibly broken.	a) Add spring tension. See "Spring Tension Adjustment" b) Replace Sub 100 Assembly. See "Sub 100 Assembly Replacement".
REEL WILL NOT LATCH	a) Incorrect operation. b) Locking Spring or Locking Ratchet is broken or worn.	a) Reel latches on first, second, third and forth "click". After fourth, "click" it automatically rewinds. b) Replace Dog Spring or Locking Cam.
FLUID LEAKS FROM SWIVEL	Swivel Seals are worn.	Replace Swivel Seals. See "Swivel Seal Replacement". Caution: Be sure leak is not at Hose Fitting!

Service Instructions

RELEASE LINE PRESSURE, DISCONNECT FLUID SUPPLY AND RELEASE SPRING TENSION BEFORE ATTEMPTING ANY MAINTENANCE OF REEL.

Spring Tension Adjustment

Releasing Spring Tension

1. Disconnect Inlet Hose. (Hose must be pre-wound into reel.)
2. Remove screws from locking plate.
3. Remove any three screws from tension plate.
4. Hold tension plate with hand while unscrewing the last screw.
5. Let both plates spin in hand (2 or 3 turns) to release tension.

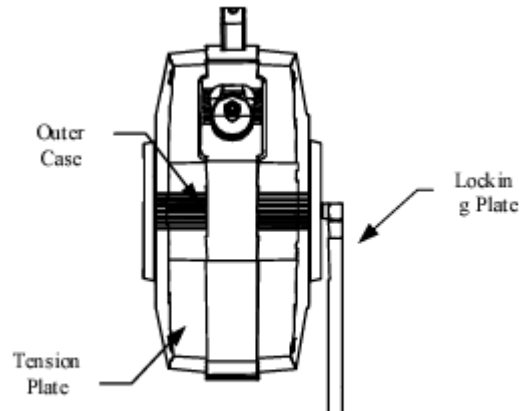


Figure 2

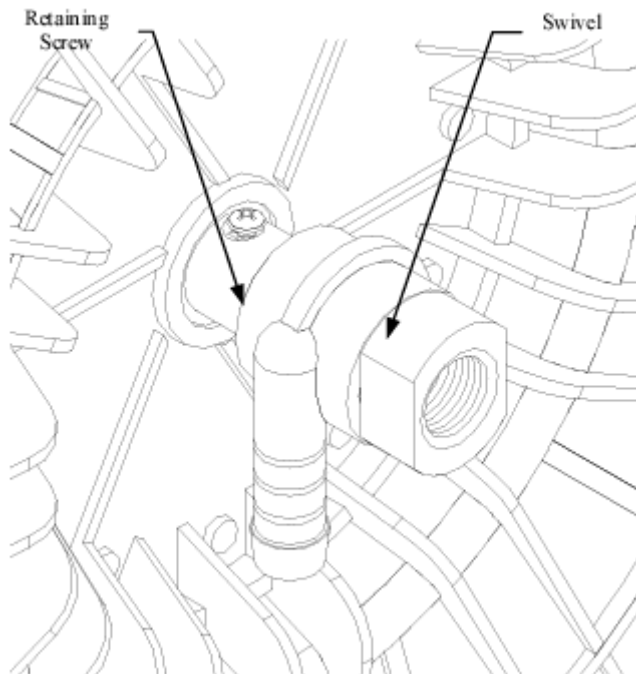


Figure 3

Retensioning the Spring

1. Fully retract the hose.
2. Turn tension plate in the rewind direction of the hose. This should be accomplished with a maximum of 3 revolutions. (Caution: Do not exceed 3 revolutions or permanent spring damage will occur.)
3. The arrow on the tension plate must be vertical for proper engagement.
4. While holding the tension plate in place, replace screws into the tension plate.
5. Align the locking plate onto the assembly using the swivel as a guide and replace the screws.

IMPORTANT: Side plates are connected via brass and nylon shafts. Do not attempt to turn one side without the other side turning simultaneously. Turning one side only will result in a broken nylon shaft or other possible damages.

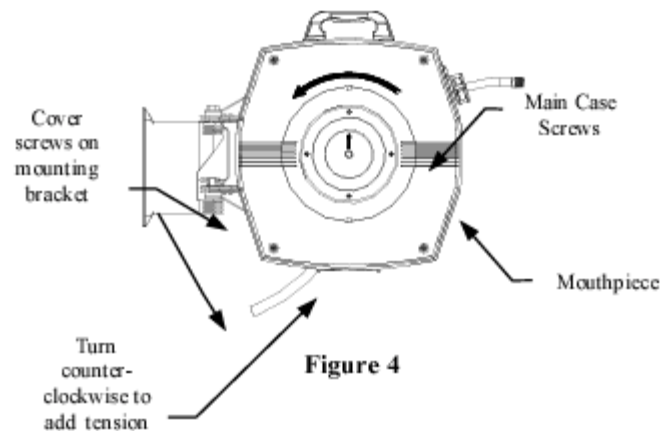


Figure 4

Sub 100 Assembly Replacement

1. Release spring tension by following the instructions in "Releasing Spring Tension".
2. Remove the four screws on the locking plate and remove plate.
3. Remove the four cover screws from the mounting bracket at the rear of the case. (Ref.: Fig. 3)
4. Remove the four main case screws.
5. Lift the outer case off the reel. (Ref.: Fig. 1)
6. Cut the hose clamp off swivel using suitable tool (side cutters, dykes, etc.)
7. Remove hose from the swivel. The hose may need to be slit along the length of the swivel. Be careful not to cut into the acetal swivel.
8. Pull old hose out and remove the ball stop.
9. Remove the retaining screw in the swivel assembly and slide the assembly off the nylon axle. (Fig. 4)
10. Replace old Sub 100 Assembly with new one.

Refer to "Replacement of Hose" steps 9-19 to reassemble reel.

Swivel Seal Replacement

1. Release spring tension by following the instructions in "Releasing Spring Tension".
2. Remove the four screws on the locking plate and remove plate.
3. Remove the four screws from the top side of the mounting bracket at the rear of the case.
4. Remove the four main case screws of the outer case on the locking plate side.
5. Lift the outer case off the reel.
6. Pull swivel assembly up to expose retaining screw.
7. Remove retaining screw from nylon shaft.
8. Pull swivel assembly off nylon shaft.
9. Remove retaining ring from swivel spool and slide plastic body off.

CAUTION: Do not damage the inside of the acetal swivel against the brass spool during removal.

10. Remove old o-rings. Clean and inspect o-ring grooves for damage. Lubricate and fit new o-rings. Replace complete unit if necessary.
11. Reassemble swivel assembly.
11. Slide onto nylon shaft and insert retaining screw. **Do not overtighten!**
12. Replace case cover and screws.
13. Replace locking plate and screws.
14. Reconnect Inlet Hose and test for leakage.
15. Retension following instructions for "Retensioning the Spring".

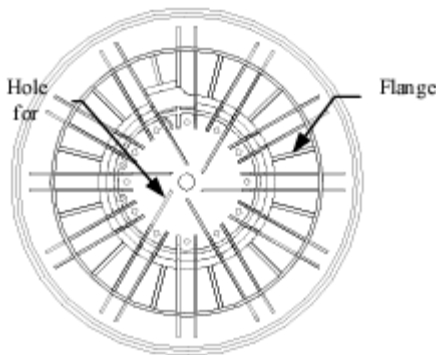


Figure 5

Replacement of Hose

1. Refer to Table 1 for hose specifications.
2. Extend the hose to the final latched position.
3. Remove the four screws on the locking plate and remove plate.
4. Remove the four screws from the top side of the mounting bracket at the rear of the case.
5. Remove the four main case screws of the outer case on the locking plate side.
6. Lift the case off.

CAUTION: Do not attempt to remove the reel from the casing as the spring is tensioned.

7. Cut the hose clamp off swivel using suitable tool (side cutters, dykes, etc.)
8. Remove hose from the swivel (Fig. 6). The hose may need to be slit along the length of the swivel. Be careful not to cut into the plastic swivel.
9. Pull old hose out and remove the ball stop.
10. Pull new hose through hole in the flange of the reel (Fig. 5).
11. Heat the end of the hose in hot water until soft.
12. Lubricate the end of the swivel with vegetable oil or detergent solution (Fig. 6).
13. Slide clamp onto hose (Fig. 6).
14. Push new hose onto the swivel and fit new clamp onto hose (Fig. 6).
15. Wind hose fully onto the reel, making sure the hose lies flat and neatly.
16. Pull hose end through mouthpiece of the case. Attach hose stop and fitting (Fig. 3).
17. Release spring tension by pulling the hose past the latched position
18. If additional spring tension is required, wrap loose hose around the reel.
19. Replace case cover and screws.
20. Replace locking plate and screws.

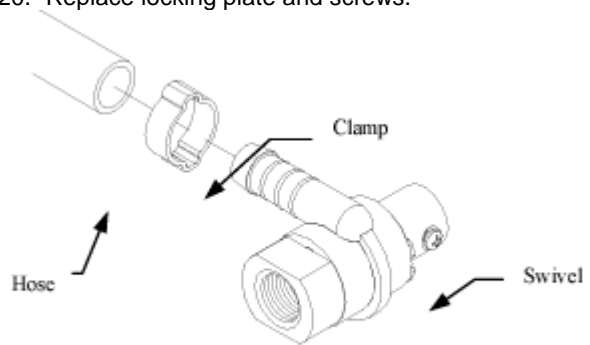


Figure 6

GENERAL HOSE SPECIFICATIONS

Model Number	Hose Length (ft)	Hose Type	Working Pressure (psi)	Hose I.D. (nominal)
A-E10-450	50	PVC	145	1/2"
A-A10-350	50	PVC	250	3/8"

POLYPRO SERIES

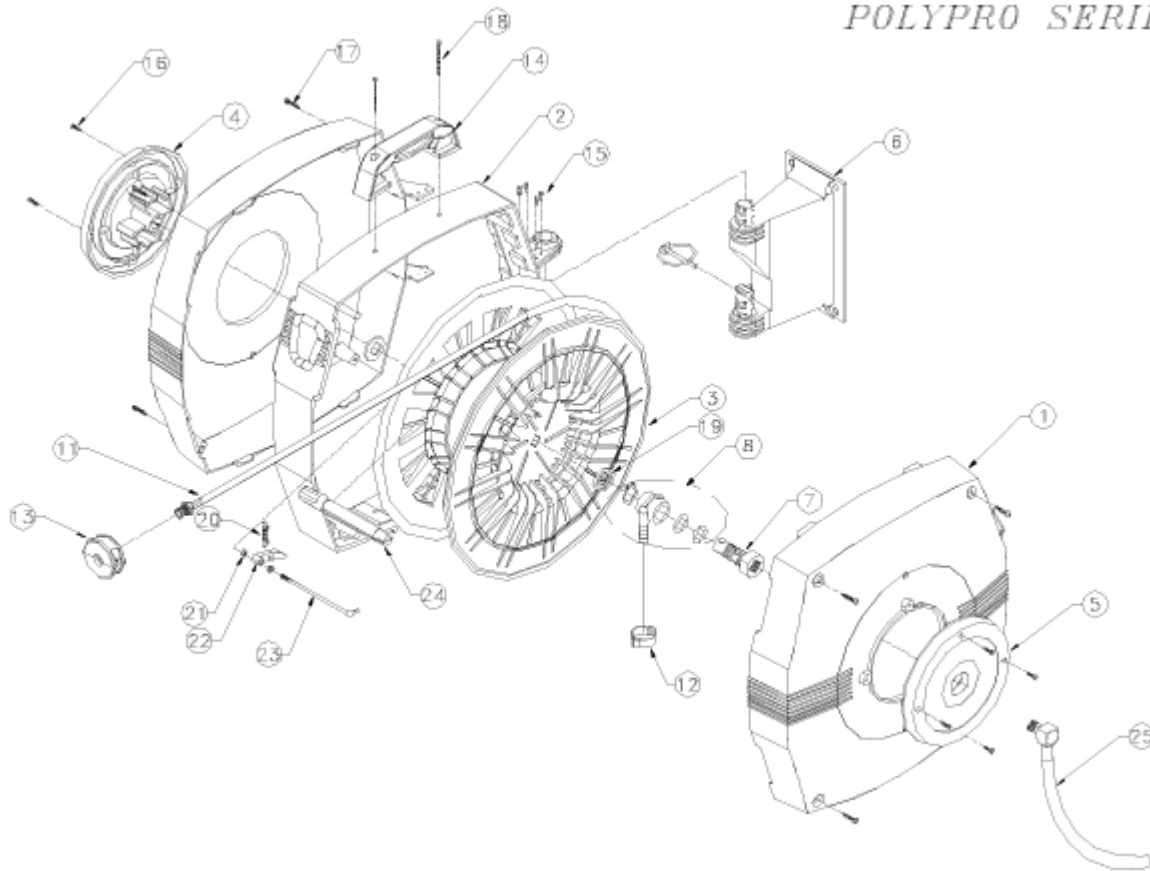


Table 1

ITEM NO.	PART NO.	DESCRIPTION	QTY REQUIRED		
			A-A10-350		A-E10-450
1	GREEN250	OUTER CASE, GREEN			2
	BLUE250	OUTER CASE, BLUE	2		
2	WAH200-BL	OUTER RING, BLUE	1		
	WAH200-GN	OUTER RING, GREEN			1
3	SUB100	HUB/SPRING/REEL ASSY	1		1
4	WAH205A	TENSION PLATE	1		1
5	WAH204	LOCKING PLATE	1		1
6	WAH217	MOUNTING BRACKET	1		1
7	WAP215	SWIVEL, SPOOL, BRASS	1		1
8	WAH207K	SWIVEL, BODY, ACETAL AND SEAL KIT	1		1
11	SF251	HOSE ASSY, AIR, 3/8", 250 PSI	1		
	SF251-W	HOSE ASSY, GARDEN, 1/2", 145 PSI			1
12	WP236	CLAMP, HOSE	2		2
13	WAH213B	BALL STOP ASSY.	1		1
14	WAH214	HANDLE	1		1
15	WAP227	SCREW, #6 X 1/2 Self-Tap	8		8
16	WAP228	SCREW, #8 X 3/8 Self-Tap	9		9
17	WAP229	SCREW, #6 X 3/4 Self-Tap	8		8
18	WAP230	SCREW, #8 X 1-3/4 Self-Tap	2		2
19	WAH215	WASHER, SPACER	2		2
20	WAH555	SPRING	1		1
21	WAP225	NUT, NYLOC, 4 MM	2		2
22	WAH209	LATCH	1		1
23	WAP218	BENT PIN, SPRING HOLDER	1		1
24	WAH206	CENTER SHAFT	1		1
25	SUB102AH	CONNECTOR HOSE, INLET	1		
	SUB102EH	CONNECTOR HOSE, INLET			1