

EXP-20.DWG

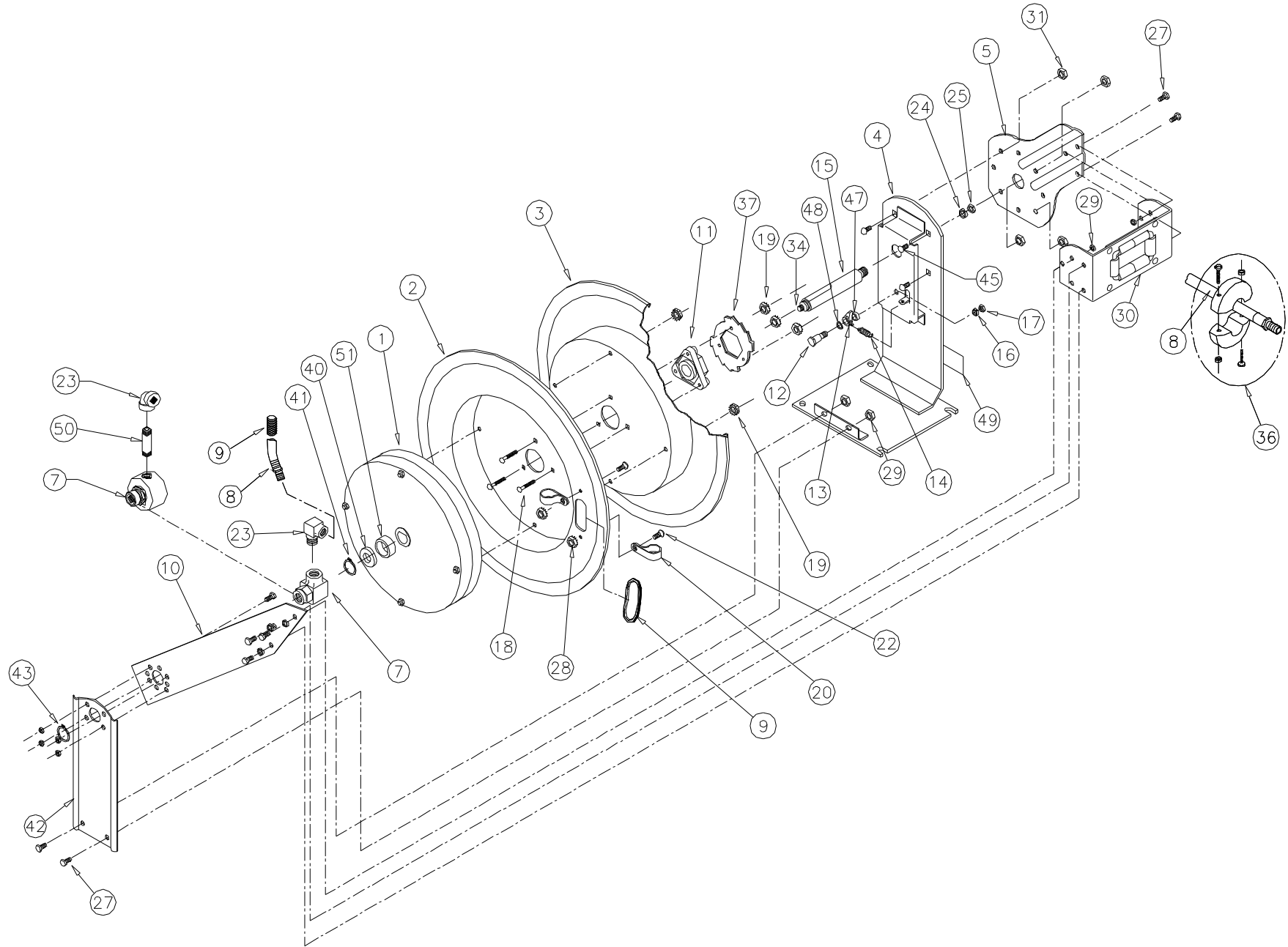
REVISION: R

ECO NO.: 1927-6

DRAWN BY: J. KNOSALLA

DATE: 07/23/03

COXREELS  
SERIES T



COMMON PARTS TO ALL SERIES T REELS

ITEM NO.	PART NO.	DESCRIPTION	QTY REQ'D
11	1776-3	ASSY, HUB BEARING	1
12	1620	BOLT, SHOULDER, 1/2"x1 1/2"	1
14	274-1-SS	SPRING, DOG	1
15	1794	AXLE	1
16	437	WASHER, LOCK, 3/8"	1
17	184	NUT, JAM, 3/8-16	1
18	1953	BOLT, CARRIAGE, 1/4-20 x 1 1/2" LG. GR 5	3
19	125	NUT, KEPS, 1/4-20	7
22	245	BOLT, 10-32 x 3/8"	2
24	438	WASHER, LOCK, 5/8"	1
25	3584	NUT, 5/8-11	1

ITEM NO.	PART NO.	DESCRIPTION	QTY REQ'D
27	312	BOLT, 5/16-18 x 3/4"	12
28	130	NUT, KEPS, 10-32	2
29	111	NUT, LOCK, 5/16-18	12
31	111-1	NUT, LOCK, 5/16-18 (LOW PROFILE)	4
34	10235-SS	SETScrew 3/8-16x7/8 CUP PT -SS	1
37	1924	LOCKING RING	1
40	1755-1	WASHER, SPACER	1
41	1753	RETAINING RING (5160-75)	1
45	10220-75	BOLT, CARRIAGE, 5/16"-18 x 3/4"	4
47	6440-SS	WASHER, SPACER	1
48	6441-1	WASHER, SPACER	1
49	10925-5	LABEL	1

MODEL NO.	ITEM NUMBER																			
	1	2	3	4	5	7	* 8	* 8	* 8	* 9	10	13	20	23	30	* 36	42	43	50	51
	SPRING	DRUM	DRUM	BASE	ARM	SWIVEL	HOSE (STD)	HOSE (-OG)	HOSE (-RH)	GUARD	ARM	L. CAM	CLAMP (2)	ELBOW	BRKT.	BALL ST	SUPP.	R.RING	NIPPLE	SPACER
TSH-N-350	690-2	1703	1702	1784	1732	433	5153-50	5101-50	5045-50	237-1	1827	640-1-SS	381	-	1829-1	131-3	1740	1754	-	7511
TSH-N-375	698-1	1705	1704	1786	1733	433	5153-75	5101-75	5045-75	237-1	1825	640-1-SS	381	-	1829-1	131-3	1741	1754	-	7511
TSH-N-3100	698-2	1705	1704	1786	1733	433	5153-100	5101-100	5045-100	237-1	1825	640-1-SS	381	-	1829-1	131-3	1741	1754	-	7511
TSH-N-3125	652	1705	1704	1786	1733	433	5153-125	5101-125	5045-125	237-1	1825	640-1-SS	381	-	1829-1	131-3	1741	1754	-	-
TSH-N-450	691-3	1703	1702	1784	1732	434	5154-50	5131-50	5066-50	398-1	1827	640-1-SS	383	-	1829-1	131-4	1740	1754	-	7511
TSH-N-475	692-2	1705	1704	1786	1733	434	5154-75	5131-75	5066-75	398-1	1825	640-1-SS	383	-	1829-1	131-4	1741	1754	-	-
TSH-N-4100	656	1705	1704	1786	1733	434	5154-100	5131-100	5066-100	398-1	1825	640-1-SS	383	-	1829-1	131-4	1741	1754	-	-
TSH-N-535	695-1	1705	1704	1786	1733	426	5155-35	5163-35	5091-35	398-1	1825	640-1-SS	384	385	1829-1	430	1712	516	-	7511
TSHF-N-535	695-1	1705-1	1704	1786	1733	426	5097-35	-	-	398-1	1825	640-1-BR	384	385	1829-1	430	1712	516	-	7511
TSH-N-550	692-1	1705	1704	1786	1733	426	5155-50	5163-50	5091-50	398-1	1825	640-1-SS	384	385	1829-1	430	1712	516	-	-
TSHF-N-550	692-1	1705-1	1704	1786	1733	426	5097-50	-	-	398-1	1825	640-1-BR	384	385	1829-1	430	1712	516	-	-
TSH-N-635	649	7238	7239	7237	1733	7231-1	5096-35	-	-	7242	7232	640-1-SS	397	15338-G	7236	20214	7233	7241	7240	-
TSHF-N-635	649	7238	7239	7237	1733	7231-1	5092-35	-	-	7242	7232	640-1-BR	397	15338-G	7236	20214	7233	7241	7240	-

MODEL NO.	ITEM NUMBER																		
	1	2	3	4	5	7	* 8	* 9	10	13	20	23	30	* 36	42	43	50	51	
	SPRING	DRUM	DRUM	BASE	ARM	SWIVEL	HOSE (STD)	GUARD	ARM	L. CAM	CLAMP (2)	ELBOW	BRKT.	BALL ST	SUPP.	R.RING	NIPPLE	SPACER	
TMP-N-350	699-1	1703	1702	1784	1732	433	5224-50	237-1	1827	640-1-SS	381	-	1829-1	131-3	1740	1754	-	7511	
TMP-N-375	656	1705	1704	1786	1733	433	5224-75	237-1	1825	640-1-SS	381	-	1829-1	131-3	1741	1754	-	-	
TMP-N-3100	657	1705	1704	1786	1733	433	5224-100	237-1	1825	640-1-SS	381	-	1829-1	131-3	1741	1754	-	-	
TMP-N-450	649	1703	1702	1784	1732	434	5256-50	398-1	1827	640-1-SS	383	-	1829-1	131-4	1740	1754	-	-	
TMP-N-475	656	1705	1704	1786	1733	434	5256-75	398-1	1825	640-1-SS	383	-	1829-1	131-4	1741	1754	-	-	
TMP-N-4100	658	1705	1704	1786	1733	434	5256-100	398-1	1825	640-1-SS	383	-	1829-1	131-4	1741	1754	-	-	
TMP-N-525	691-1	1703	1702	1784	1732	426	5290-25	398-1	1827	640-1-SS	384	385	1829-1	430	1711	516	-	7511	
TMP-N-535	654	1705	1704	1786	1733	426	5290-35	398-1	1825	640-1-SS	384	385	1829-1	430	1712	516	-	-	
TMP-N-550	654	1705	1704	1786	1733	426	5290-50	398-1	1825	640-1-SS	384	385	1829-1	430	1712	516	-	-	

MODEL NO.	ITEM NUMBER																		
	1	2	3	4	5	7	* 8	* 9	10	13	20	23	30	* 36	42	43	50	51	
	SPRING	DRUM	DRUM	BASE	ARM	SWIVEL	HOSE (STD)	GUARD	ARM	L. CAM	CLAMP (2)	ELBOW	BRKT.	BALL ST	SUPP.	R.RING	NIPPLE	SPACER	
THP-N-150	647	1703	1702	1784	1732	499	5304-50	237-1	1827	640-1-SS	115	-	1829-1	131	1740	1754	-	7511	
THP-N-175	698-3	1705	1704	1786	1733	499	5304-75	237-1	1825	640-1-SS	115	-	1829-1	131	1741	1754	-	7511	
THP-N-1100	657	1705	1704	1786	1733	499	5304-100	237-1	1825	640-1-SS	115	-	1829-1	131	1741	1754	-	-	
THP-N-350	696-1	1703	1702	1784	1732	521	5336-50	237-1	1827	640-1-SS	613	-	1829-1	131-3	1740	1754	-	-	
THP-N-375	656	1705	1704	1786	1733	521	5336-75	237-1	1825	640-1-SS	613	-	1829-1	131-3	1741	1754	-	-	

\* ON "LESS HOSE" MODELS (TSHL-/TMPL-/THPL-) EXCLUDE ITEMS #8, #9, AND #36.  
 NOTE: MODELS SUPPLIED WITH "STANDARD" HOSE UNLESS SUFFIXED WITH "-OG" OR "-RH". USE HOSE NUMBERS AS NOTED ABOVE.

REEL ASSEMBLY REPORTS: R100 (LATCHOUT REMOVAL), R101 (LOCKING RING PLACEMENT), R112 (TIGHTENING AND TORQUING)