

HOSE, CORD & CABLE REELS

# Fire Reels

## FIRE STATIONS & MAINTENANCE CENTERS

**COXREELS** SINCE 1923



INDUSTRY CATALOG

# FIRE STATION & MAINTENANCE CENTER REELS



## COXREELS & Fire Station Reels Selection:

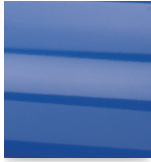
Hose, cord, and cable reels are an essential component of stationary and mobile fire fighting systems. They are also the preferred choice for hose or cord management in the fire stations and fire apparatus maintenance service centers.

Coxreels manufactures comprehensive hose, cord, and cable reel lines for fire stations and applications including, but not limited to:

- **Air hose reels** to operate pneumatic tools
- **Water hose reels** for water services
- **Oil/Grease hose reels** for fire maintenance service centers
- **Cord reels** to operated power tools and light sources
- **Storage reels** to store hose, cord & cable
- **Exhaust reels** for indoor fire apparatus exhaust removal systems
- **Washdown and pressure washing hose reels** for ground maintenance in fire stations and wash fire apparatus

# PROFESSIONAL GRADE FEATURES

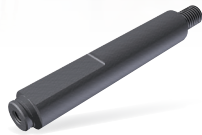
## A HIGHER LEVEL OF STANDARDS



**CPC™ POWDER COAT**  
Our blue powder coat finish is long lasting, chip resistant & rust inhibiting



**BRASS SWIVEL**  
External fluid path, machined from solid brass, full flow, swivel for simple seal maintenance



**STEEL AXLE**  
1" solid steel axle & lubricated bearings for extra strength & durability. Not a hollow tube & no fluid travels through it



**STEEL CONSTRUCTION**  
High-Quality steel construction provides superior strength and durability for heavy-duty applications in commercial and industrial settings



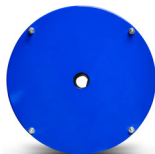
**COMPONENT COVER**  
External CPC powder coated steel components cover for simple slip ring routine maintenance



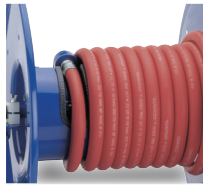
**EZ-COIL® SERIES**  
A patented safety system that retracts up to 80% slower than conventional reels



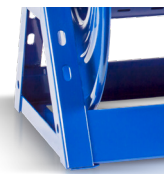
**CNC SPUN DISCS**  
All steel rolled edges & ribbed discs for added safety, strength & durability



**CARTRIDGE MOTOR**  
Enclosed factory tuned & matched cartridge style motor for safe & easy replacement



**LOW PROFILE RISER**  
Low profile riser with open drum slot allows for smooth even hose wraps that will not pinch or bind your hose. **NO HUMP!**



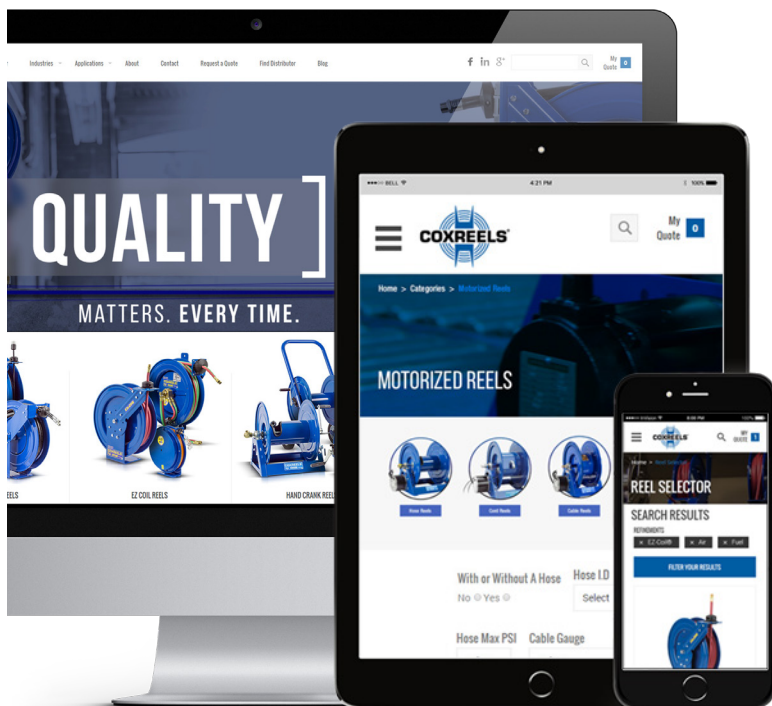
**ALL WELDED STEEL "A" FRAME**  
All welded steel "A" frame for strength & durability. **NOT BOLTED!**



**2 YEAR WARRANTY**  
Coxreels proudly stands behind our reels as they are built to last!



**USA MADE, QUALITY & SUPPORT**  
We take great pride in designing, building & supplying the world's finest reels made right here in the U.S.A.



## VISIT US ONLINE

Coxreels is committed to providing our customers with the ultimate online experience as they navigate through the most complete and diverse line of hose, cord, and cable reels.

We hope that you enjoy the fresh look and feel of our updated website and find that this portal serves as a valuable resource for you!

FOLLOW US



www.coxreels.com • 1.800.COX.REEL

FIRE STATION REELS

# SPRING DRIVEN HOSE & CORD REEL

## PROFESSIONAL GRADE FEATURES



**ADJUSTABLE, SOLID RUBBER HOSE STOP** for lead length positioning

**VERSATILE GUIDE ARM** adjusts to wall, floor, ceiling, & vehicle mounting

**EXTERNAL FLUID PATH WITH MACHINED FROM SOLID BRASS 90° FULL-FLOW NPT SWIVEL** that screws directly on 1" solid steel axle, for simple seal maintenance and fast and easy hose installation

**HIGH QUALITY, STEEL CONSTRUCTION** with our durable CPC™ powder coat finish

**HEAVY DUTY, SPUN DISCS** with rolled edges for greater strength, made with first of its kind CNC robotic spin cell

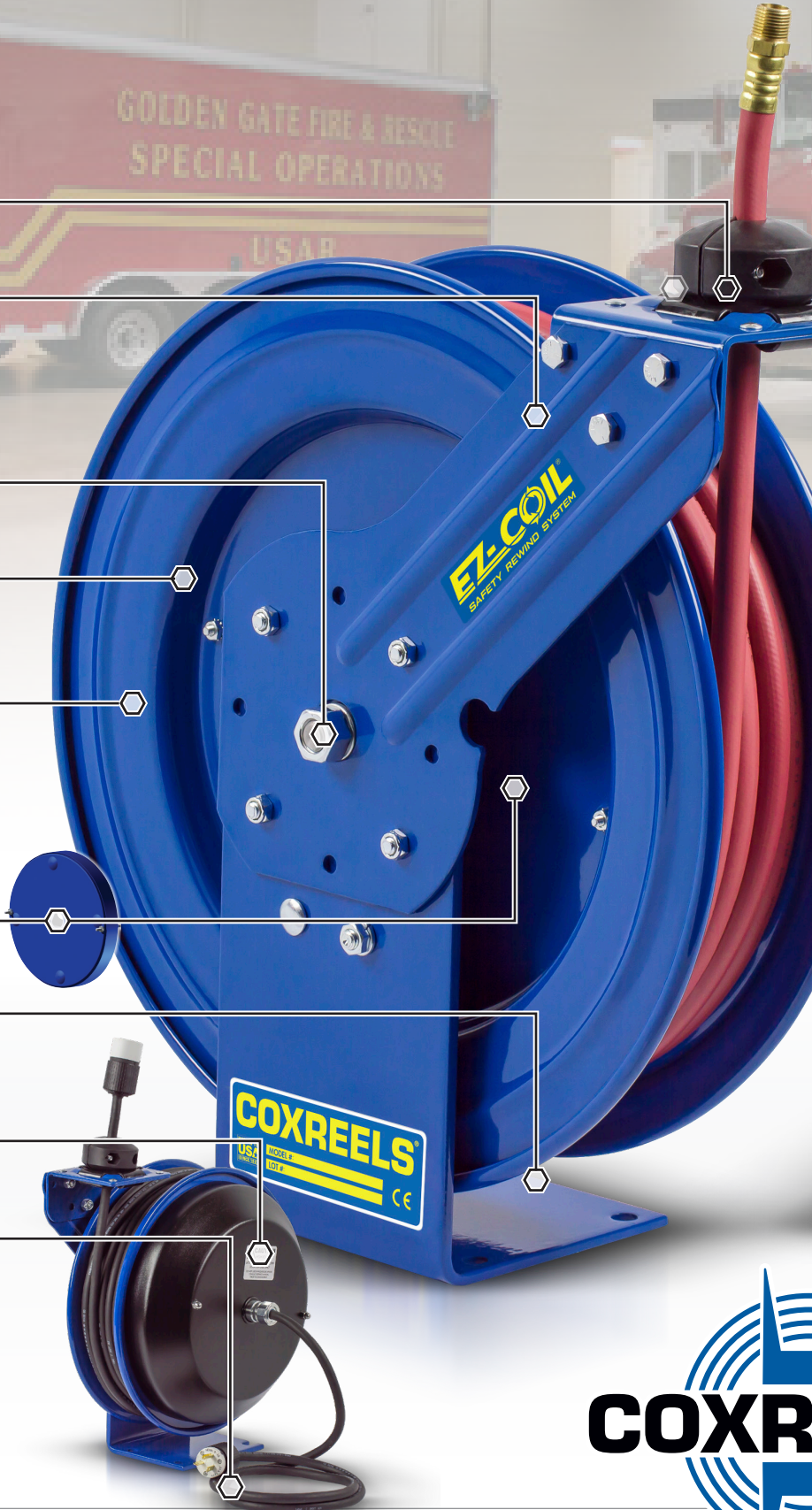
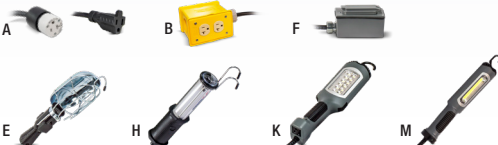
**ENCLOSED, FACTORY TUNED AND MATCHED CARTRIDGE-STYLE SPRING MOTOR**, for safe and easy maintenance. Models equipped with **EZ-COIL**, Coxreels patented safety system, retracts up to 80% slower than conventional reels

**HEAVY GAUGE 1/4" STEEL BASE & SUPPORT POST** for maximum stability

**HEAVY GAUGE POWDER COATED STEEL COMPONENTS COVER** protecting the slip ring & all electrical components

**INCLUDES 5' LEAD CABLE & GROUNDING PLUG** (except on less cord models)

### CHOICE OF ELECTRICAL ACCESORIES



# SPRING DRIVEN HOSE REEL

## PROFESSIONAL GRADE FEATURES



**HEAVY DUTY, SOLID SPUN DISCS WITH ROLLED EDGES** - not stamped, made with  
• first of its kind CNC robotic spinning cell

**DRUM MOUNTED HOSE GUIDE**  
• with hose guide rail

**HIGH QUALITY, STEEL CONSTRUCTION**  
• with our durable CPC™ powder coat finish

**FITS 4 - 6" EXHAUST DUCTWORK**  
• on all models so ductwork does not  
• need to be fitted per reel

**ENCLOSED, FACTORY TUNED AND MATCHED CARTRIDGE-STYLE SPRING MOTOR**  
• for safe and easy maintenance

**EASY ACCESS PANEL TO THE DRUM**  
• for convenient routine maintenance

**ALL WELDED STEEL "A"FRAME** for strength,  
• durability, stability, prevention of tip-overs



All products are backed by the industry's most comprehensive 2-year manufacturers limited warranty

All Coxreels products are proudly designed & made in the USA



# LG SERIES COMPACT EFFICIENT HOSE & TUBING REELS



**COXREELS® LG Series “Little Giant” is the first lightweight, heavy duty reel on the market.** The LG is perfect for fire station and maintenance shops where space is limited. It is extremely lightweight and compact and can install almost anywhere. This little giant can accept either a 1/4" or 3/8" hose to tackle the jobs of reels nearly double its size.

## LG SERIES

Do not exceed listed hose O.D. to obtain maximum length.

HOSE						LESS HOSE		SIZE INDEX
MODEL	I.D.	O.D.	FT.	PSI	APRX. LBS.	MODEL	APRX. LBS.	
<b>LOW PRESSURE</b>						Models with hose are for air water service with a maximum temperature 150°F. Models less hose can be used for air, water or oil		
LG-LP-115	1/4"	1/2"	15	300	9	LG-LPL-115	8	1
LG-LP-125	1/4"	1/2"	25	300	11	LG-LPL-125	8	1
LG-LP-310	3/8"	5/8"	10	300	9	LG-LPL-310	8	1
LG-LP-320	3/8"	5/8"	20	300	11	LG-LPL-320	8	1

## LG SERIES :: REEL SPECIFICATIONS

### SWIVEL

- External fluid path with machined from solid brass 90° full-flow NPT swivel inlet
- Swivel Seals: NITRILE

### DESIGN & STRUCTURE

- Compact & lightweight spring driven hose reel saves space and facilitates workplace organization
- CoxComposite™ grommet with continuous radius design that does not pinch or catch the hose during operation
- Solid, one-piece, 12GA steel base and support post for maximum stability
- 1/2" solid steel axle and lubricated precision bearings for smooth rotation
- Designed for lightweight PVC hose and tubing

### RETRACTION

- Enclosed, factory tuned and matched cartridge-style spring motor
- Non-corrosive CoxComposite™ ratchet hub with self lubricating bronze bearings secures hose at desired length

**!** WARNING: Cancer and reproductive Harm – See page 19 for more information – [www.P65Warning.ca.gov](http://www.P65Warning.ca.gov)

## TOP REQUESTED UPGRADES & ACCESSORIES

SEE PAGE 16 FOR ADDITIONAL ACCESSORIES



### ADD BEND RESTRICTOR

Designed to limit the degree of bending without compromising the integrity of the hose assembly while also preventing the hose-end from kinking, excessive wearing, and tearing.



### UPGRADE TO NITRILE OR RUBBER HOSE

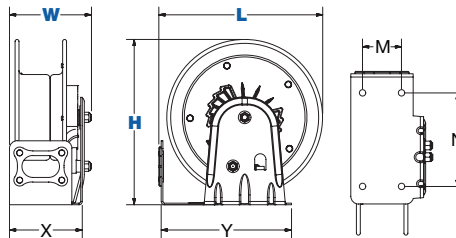
**NITRILE HOSE:** Premium high quality, oil resistant, multi-purpose hose. The high tensile spiral synthetic yarn reinforcement provides excellent kink resistance. Temperature range: -20° F to +212° F.

**SYNTHETIC RUBBER HOSE:** Versatile general purpose hose. The synthetic rubber tube and cover resists heat, sunlight, ozone, and weathering. Temperature range -40° F to +212° F

## REEL DIMENSIONS

Technical Data Sheets Available On Website

SIZE INDEX	W	H	L	X	Y	M	N
1	5 1/4"	10 5/8"	10 1/2"	4 11/16"	8 3/8"	2 1/2"	6"
	Overall Dimensions			Base		Mounting Pattern	



# PERFORMANCE HOSE REELS **P SERIES**

**COXREELS® P Series "Performance" spring driven hose reels have a long history of dependability and hassle free performance.** Their compact space-saving size and heavy duty construction make them highly versatile and virtually indestructible. Time-tested proven components, superior design and craftsmanship have contributed to its worldwide reputation as the most trusted hose reel. There are suitable for either a fire station or maintenance shop.



**P SERIES :: REEL SPECIFICATIONS**

## P SERIES

Do not exceed listed hose O.D. to obtain maximum length.

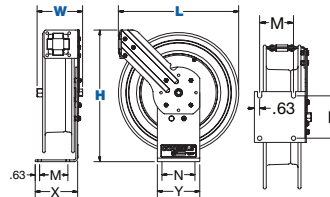
HOSE							LESS HOSE		SIZE INDEX
MODEL	I.D.	O.D.	FT.	PSI	APRX. LBS.	EZ-COIL MODELS	MODEL	APRX. LBS.	
<b>LOW PRESSURE</b> Models with hose are for air water service with a maximum temperature 150°F. Models less hose can be used for air, water or oil									
P-LP-125	1/4"	1/2"	25	300	27	EZ-P-LP-125	P-LPL-125	24	1
P-LP-130	1/4"	1/2"	30	300	27	-	P-LPL-130	24	1
P-LP-150	1/4"	1/2"	50	300	40	EZ-P-LP-150	P-LPL-150	35	3
P-LP-325	3/8"	5/8"	25	300	28	EZ-P-LP-325	P-LPL-325	25	2
P-LP-330	3/8"	5/8"	30	300	37	EZ-P-LP-330	P-LPL-330	33	3
P-LP-350	3/8"	5/8"	50	300	43	EZ-P-LP-350	P-LPL-350	36	3
P-LP-425	1/2"	3/4"	25	300	44	-	P-LPL-425	39	4
P-LP-430	1/2"	3/4"	30	300	45	EZ-P-LP-430	P-LPL-430	40	4
P-LP-450	1/2"	3/4"	50	300	48	EZ-P-LP-450	P-LPL-450	43	4
<b>MEDIUM PRESSURE</b> Reels are furnished with standard one wire braid hose suitable for air, water or oil applications. Hose exceeds SAE R1 specifications. Maximum Temperature 250°F.									
P-MP-325	3/8"	11/16"	25	3,000	49	-	P-MPL-325	42	4
P-MP-330	3/8"	11/16"	30	3,000	51	-	P-MPL-330	43	4
P-MP-425	1/2"	13/16"	25	2,500	49	EZ-P-MP-425	P-MPL-425	42	4
P-MP-430	1/2"	13/16"	30	2,500	51	EZ-P-MP-430	P-MPL-430	43	4
<b>HIGH PRESSURE</b> Reels are furnished standard with S.A.E. 100R16 #1 or #2 wire braid hose suitable for grease and hydraulic oil applications. Maximum Temperature 250°F.									
P-HP-125	1/4"	9/16"	25	5,000	48	EZ-P-HP-125	P-HPL-125	42	4
P-HP-130	1/4"	9/16"	30	5,000	50	-	P-HPL-130	43	4
P-HP-325	3/8"	11/16"	25	4,000	49	EZ-P-HP-325	P-HPL-325	42	4
P-HP-330	3/8"	11/16"	30	4,000	51	-	P-HPL-330	43	4

To order EZ-Coil® equipped models less hose, please add prefix "EZ-"

## REEL DIMENSIONS

SIZE INDEX	W	H	L	X	Y	M	N
1	57/8"	147/8"	131/2"	5"	6"	3"	5"
2	61/2"	147/8"	131/2"	5"	6"	3"	5"
3	63/4"	185/8"	171/8"	6"	6"	4"	5"
4	7"	185/8"	171/8"	6"	6"	4"	5"

Overall Dimensions      Base      Mounting Pattern



## TOP REQUESTED UPGRADES & ACCESSORIES

SEE PAGE 16 FOR ADDITIONAL ACCESSORIES



### ORDER EZ-COIL® MODELS

EZ-Coil® is a patented controlled retraction technology offered exclusively on Coxreels' Safety Series reels. It retracts up to 80% slower than conventional reels, resulting in workplace safety, protection from injury & costly property damage.



### UPGRADE TO SOLID ROLLERS

Heavy duty machined from solid plastic rollers.

### UPGRADE TO NITRILE OR RUBBER HOSE

**NITRILE HOSE:** Premium high quality, oil resistant, multi-purpose hose. The high tensile spiral synthetic yarn reinforcement provides excellent kink resistance. Temperature range: -20° F to +212° F.

**SYNTHETIC RUBBER HOSE:** Versatile general purpose hose. The synthetic rubber tube and cover resists heat, sunlight, ozone, and weathering. Temperature range -40° F to +212° F



### ADD AIR TOOL KIT

**BEND RESTRICTOR:** Designed to limit the degree of bending without compromising the integrity of the hose assembly while also preventing the hose-end from kinking, excessive wearing, and tearing. Available for low pressure models.

**QUICK DISCONNECT:** Quick disconnect couplings tread onto end of hose fitting to provide fast, leak-proof connections for low pressure hose lines.

### UPGRADE TO STAINLESS STEEL SWIVEL

Based on the upgraded medium pressure swivel, the stainless steel swivel is machined from solid 316 stainless steel and features increased wall thicknesses with upgraded seals and backup rings.



### ADD BEND RESTRICTOR

Designed to limit the degree of bending without compromising the integrity of the hose assembly while also preventing the hose-end from kinking, excessive wearing, and tearing. Available for low pressure models.



AIR/WATER OIL & GREASE

# SH, MP & HP SERIES HEAVY DUTY HOSE REELS



Double axle support with Super Hub™

**COXREELS® SH Series "Super Hub™" spring driven hose reels, like the P Series, have a long history of dependable performance.** The larger chassis and frame accommodate longer lengths and larger diameters of hose. Coxreels' original Super Hub™ dual axle support system increases the stability during operation, reduces vibration, and strengthens the structural integrity of the reel.

## SH, MP & HP SERIES

Do not exceed listed hose O.D. to obtain maximum length.

HOSE							LESS HOSE		SIZE INDEX	
MODEL	I.D.	O.D.	FT.	PSI	APRX. LBS.	EZ-COIL MODELS	MODEL	APRX. LBS.		
<b>LOW PRESSURE</b>							Models with hose are for air water service with a maximum temperature 150°F. Models less hose can be used for air, water or oil			
SH-N-350	3/8"	5/8"	50	300	50	EZ-SH-350	SHL-N-350	44	2	
SH-N-375	3/8"	5/8"	75	300	68	EZ-SH-375	SHL-N-375	59	3	
SH-N-450	1/2"	3/4"	50	300	54	EZ-SH-450	SHL-N-450	46	2	
SH-N-475	1/2"	3/4"	75	300	68	EZ-SH-475	SHL-N-475	57	4	
SH-N-525	3/4"	1 1/16"	25	300	52	EZ-SH-525	SHL-N-525	45	5	
SH-N-550	3/4"	1 1/16"	50	300	69	EZ-SH-550	SHL-N-550	56	6	
<b>MEDIUM PRESSURE</b>							Reels are furnished standard one wire braid hose suitable for air, water or oil applications. Hose exceeds SAE R1 specifications. Maximum Temperature 250°F.			
MP-N-350	3/8"	1 1/16"	50	3,000	65	EZ-MP-350	MPL-N-350	53	2	
MP-N-450	1/2"	1 3/16"	50	2,500	67	EZ-MP-450	MPL-N-450	53	7	
MP-N-525	3/4"	1 1/16"	25	1,500	61	-	MPL-N-525	51	5	
MP-N-535	3/4"	1 1/16"	35	1,500	68	-	MPL-N-535	54	5	
<b>HIGH PRESSURE</b>							Reels are furnished standard with S.A.E. 100R16 #1 or #2 wire braid hose suitable for grease and hydraulic oil applications. Maximum Temperature 250°F.			
HP-N-150	1/4"	9/16"	50	5,000	64	EZ-HP-150	HPL-N-150	53	7	
HP-N-350	3/8"	1 1/16"	50	4,000	65	EZ-HP-350	HPL-N-350	53	8	

To order EZ-Coil® equipped models less hose, please add prefix "EZ-"

### SH, MP & HP SERIES :: REEL SPECIFICATIONS

#### SWIVEL

- External fluid path with machined from solid brass 90° full-flow NPT swivel inlet (Zinc plated steel swivel on HP models)
- Swivel Seals: NITRILE

#### DESIGN & STRUCTURE

- Sturdy, single pedestal reel features Coxreels' exclusive Super Hub™ dual axle support system
- Guide arm adjusts to wall, floor, vehicle, and overhead positions
- Solid, one-piece, heavy gauge 1/4" steel base and support post for maximum stability
- 1" solid steel axle and lubricated precision bearings for smooth rotation

#### RETRACTION

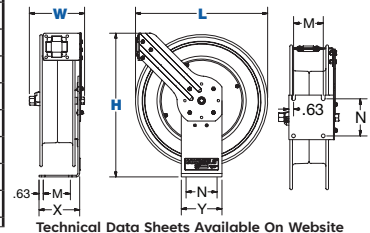
- Controlled retraction speed up to 80% slower on EZ-COIL models
- Enclosed, factory tuned and matched cartridge-style spring motor
- Non-corrosive, stainless steel spring, pawl and zinc plated ratchet
- Multi-position lock ratchet mechanism secures hose at desired length

**WARNING:** Cancer and reproductive Harm – See page 19 for more information – [www.P65Warning.ca.gov](http://www.P65Warning.ca.gov)

### REEL DIMENSIONS

SIZE INDEX	W	H	L	X	Y	M	N
1	7 7/8"	21 1/4"	19 1/2"	6"	6"	4"	5"
2	8 1/4"	21 1/4"	19 1/2"	6"	6"	4"	5"
3	8 1/4"	21 1/4"	24"	6"	6"	4"	5"
4	8 3/4"	25 1/2"	24"	6"	6"	4"	5"
5	9 3/8"	25 1/2"	19 1/2"	6"	6"	4"	5"
6	9 3/8"	25 1/2"	24"	6"	6"	4"	5"
7	8 3/4"	25 1/2"	19 1/2"	6"	6"	4"	5"
8	9 1/4"	25 1/2"	19 1/2"	6"	6"	4"	5"

Overall Dimensions Base Mounting Pattern



### TOP REQUESTED UPGRADES & ACCESSORIES

SEE PAGE 16 FOR ADDITIONAL ACCESSORIES



#### ORDER EZ-COIL® MODELS

EZ-Coil® is a patented controlled retraction technology offered exclusively on Coxreels' Safety Series reels. It retracts up to 80% slower than conventional reels, resulting in workplace safety, protection from injury & costly property damage.



#### UPGRADE TO SOLID ROLLERS

Heavy duty machined from solid plastic rollers.

#### UPGRADE TO NITRILE OR RUBBER HOSE

**NITRILE HOSE:** Premium high quality, oil resistant, multi-purpose hose. The high tensile spiral synthetic yarn reinforcement provides excellent kink resistance. Temperature range: -20° F to +212° F.

**SYNTHETIC RUBBER HOSE:** Versatile general purpose hose. The synthetic rubber tube and cover resists heat, sunlight, ozone, and weathering. Temperature range -40° F to +212° F



#### ADD AIR TOOL KIT

**BEND RESTRICTOR:** Designed to limit the degree of bending without compromising the integrity of the hose assembly while also preventing the hose-end from kinking, excessive wearing, and tearing. Available for low pressure models.

**QUICK DISCONNECT:** Quick disconnect couplings tread onto end of hose fitting to provide fast, leak-proof connections for low pressure hose lines.



#### UPGRADE TO STAINLESS STEEL SWIVEL

Based on the upgraded medium pressure swivel, the stainless steel swivel is machined from solid 316 stainless steel and features increased wall thicknesses with upgraded seals and backup rings.



#### ADD BEND RESTRICTOR

Designed to limit the degree of bending without compromising the integrity of the hose assembly while also preventing the hose-end from kinking, excessive wearing, and tearing. Available for low pressure models.





**COXREELS® C Series "Combination" spring driven air hose/electric cord reels are two reels in one compact assembly.** They are perfect for applications that require pneumatic air and an electrical power feed. The single expanded mounting base creates stability and adds to the convenience of one mounting pattern. This series is also available in dual hose combinations.



**C SERIES** Do not exceed listed hose O.D. to obtain maximum length. Receptacle End Plug End

HOSE & CORD												
MODEL	ACCESSORY	INLET OUTLET	AWG / NO COND.	CORD FT.	TYPE	AMPS.	I.D.	O.D.	FT.	PSI	APPR. LBS.	SIZE INDEX
<b>FOR INDOOR USE ONLY!</b> Coxreels electric and pneumatic hose reels operate as two independent, self-retracting 50 foot trouble-free assemblies. All Models rated: 115 volts, 3*conductors, 60hz single phase.												
C-L350-5016-A	Single Industrial Receptacle† 		16 / 3	50	SJO	13	3/8"	5/8"	50	300	79	1
C-L350-5012-A	Single Industrial Receptacle† 		12 / 3	50	SJO	20	3/8"	5/8"	50	300	84	1
C-L350-5012-B	Quad "4 Plug" Industrial Receptacle† 		12 / 3	50	SJO	20	3/8"	5/8"	50	300	85	1
C-L350-5016-F	Duplex G.F.C.I. Metal Industrial Receptacle† 		16 / 3	50	SJO	13	3/8"	5/8"	50	300	79	1
C-L350-5012-F			12 / 3	50	SJO	20	3/8"	5/8"	50	300	84	1
C-L350-5016-X	With Hose, With Cord, Less Accessory 		16 / 3	50	SJO	13	3/8"	5/8"	50	300	78	1
C-L350-5012-X	With Hose, With Cord, Less Accessory 		12 / 3	50	SJO	20	3/8"	5/8"	50	300	83	1
C-L350-5012-4	With Hose, With Cord, Less Accessory 		12 / 4	50	SJO	13	3/8"	5/8"	50	300	86	
C-L350L-5016L-X	Less Hose, Less Cord, Less Accessory		16 / 3	50	N/A	25	3/8"	5/8"	50	300	71	1
C-L350L-5012L-X	Less Hose, Less Cord, Less Accessory		12 / 3	50	N/A	25	3/8"	5/8"	50	300	71	1

**REEL DIMENSIONS** Technical Data Sheets Available On Website

SIZE INDEX	W	H	L	X	Y	M	N
1	16"	18 5/8"	17"	8"	9"	7"	8"
	Overall Dimensions			Base		Mounting Pattern	



**END USER CAUTION STATEMENTS**

- Cord AWG, length, insulation rating, as well as single or multi-phase electrical service must be considered in determining the power rating for each reel. End use application must not exceed the lowest rated component (reel or cord). End user is responsible for determining and ensuring compliance to national and local codes as required.
- Disconnect power source from reel while unspooling / spooling cord.
- Cord should be completely unspooled from the reel when energized. Otherwise follow NEC ampacity derating factors in 310.15(B)(3)(a) where "# current carrying conductors in the service cord" X "#cord layers on the reel" = "# current carrying conductors" in a raceway. Apply the appropriate derating factor to the cord ampacity listed in 310.15(B)(16).

**TOP REQUESTED UPGRADES & ACCESSORIES**



**UPGRADE YOUR LEAD CABLE**

Upgrade the reach of your reel by requesting a 10' lead cable instead of the standard 5'.



**UPGRADE TO SOLID ROLLERS**

Heavy duty machined from solid plastic rollers.



**UPGRADE TO NITRILE OR RUBBER HOSE**

**NITRILE HOSE:** Premium high quality, oil resistant, multi-purpose hose. The high tensile spiral synthetic yarn reinforcement provides excellent kink resistance. Temperature range: -20° F to +212° F.

**SYNTHETIC RUBBER HOSE:** Versatile general purpose hose. The synthetic rubber tube and cover resists heat, sunlight, ozone, and weathering. Temperature range -40° F to +212° F

**ORDER LIGHT MODELS**

- E SUFFIX: Caged drop light with tool tap plug.
- H SUFFIX: Industrial duty LED light 6X 3W HO
- K SUFFIX: Industrial duty LED light 12X 1W SHD
- M SUFFIX: Industrial duty LED light 8W COB



Listed† :: Accessories only **C SERIES :: REEL SPECIFICATIONS**

**SWIVEL & LEAD CABLE**

- External fluid path with machined from solid brass 90° full-flow NPT swivel inlet
- Swivel Seals: NITRILE
- External CPC™ powder coated steel components cover for simple slip ring routine maintenance
- Include 5' lead cable & grounding plug (except on less cord models)

**DESIGN & STRUCTURE**

- Compact, two reel assembly for air/electric applications, each reel operates independently
- Guide arm adjusts to wall, floor, and overhead positions
- Single expanded, 1/4" steel mounting base for increased stability and space efficiency
- One mounting pattern allows for 1/2 the installation time required to install 2 reels at one station
- 1" solid steel axle and lubricated precision bearings for smooth rotation

**RETRACTION**

- Enclosed, factory tuned and matched cartridge-style spring motor
- Non corrosive, stainless steel spring, pawl and zinc plated ratchet
- Multi-position lock ratchet mechanism secures hose/cord at desired length



**WARNING:** Cancer and reproductive Harm – See page 19 for more information – [www.P65Warning.ca.gov](http://www.P65Warning.ca.gov)

SEE PAGE 16 FOR ADDITIONAL ACCESSORIES



# PC<sup>10</sup> SERIES

## COMPACT POWER CORD REELS

**COXREELS® PC<sup>10</sup> Series Power-Cord Series** is a unique compact addition to our original line of power cord and light reels. This ground-breaking design sets a new bar as the ideal cord management solution capable of fulfilling any commercial or industrial application where space is limited. Modeled after the LG "Little Giant" Series, this series is equipped with a continuous radius grommet style power cord guide and a unique C-PEP™ Composite hub featuring excellent chemical resistance and additional strength at cold temperatures.



### PC<sup>10</sup> SERIES



MODEL	ACCESSORY	CORD							SIZE INDEX
		INLET OUTLET	AWG / NO COND.	CORD FT.	TYPE	VOLTS	AMPS	APRX. LBS.	
<b>FOR INDOOR USE ONLY!</b> All models rated at 115 volts, 60 hz single phase only.									
<b>PC10-3016-A†</b>	Single Industrial Receptacle†		16 / 3	30	SJO	115	13	14	<b>1</b>
<b>PC10-3012-A†</b>	Single Industrial Receptacle†		12 / 3	30	SJO	115	20	17	<b>1</b>
<b>PC10-3012-B†</b>	Quad "4 Plug" Industrial Receptacle†		12 / 3	30	SJO	115	20	18	<b>1</b>
<b>PC10-3016-F†</b>	Duplex G.F.C.I. Metal Industrial Receptacle†		16 / 3	30	SJO	115	13	16	<b>1</b>
<b>PC10-3012-F†</b>			12 / 3	30	SJO	115	20	19	<b>1</b>
<b>PC10-3016-X</b>	With Cord, Less Accessory		16 / 3	30	SJO	300	13	14	<b>1</b>
<b>PC10-3012-X</b>			12 / 3	30	SJO	300	20	18	<b>1</b>
<b>PC10-3016-4</b>	With Cord, Less Accessory		16 / 4	30	SJO	300	10	14	<b>1</b>
<b>PC10L-3016</b>	Less Cord, Less Accessory		16 / 3	30*	SJO	300	25	11	<b>1</b>
<b>PC10L-3012</b>			12 / 3	30*	SJO	300	25	11	<b>1</b>

### REEL DIMENSIONS

Technical Data Sheets Available On Website

SIZE INDEX	W	H	L	X	Y	M	N
<b>1</b>	7 <sup>3</sup> / <sub>8</sub> "	10 <sup>5</sup> / <sub>8</sub> "	10 <sup>1</sup> / <sub>2</sub> "	4 <sup>5</sup> / <sub>8</sub> "	8 <sup>3</sup> / <sub>8</sub> "	2 <sup>1</sup> / <sub>2</sub> "	6"
	Overall Dimensions			Base		Mounting Pattern	



### END USER CAUTION STATEMENTS

- Cord AWG, length, insulation rating, as well as single or multi-phase electrical service must be considered in determining the power rating for each reel. End use application must not exceed the lowest rated component (reel or cord). End user is responsible for determining and ensuring compliance to national and local codes as required.
- Disconnect power source from reel while unspooling / spooling cord.
- Cord should be completely unspooled from the reel when energized. Otherwise follow NEC ampacity derating factors in 310.15(B)(3)(a) where "# current carrying conductors in the service cord" X "#cord layers on the reel" = "# current carrying conductors" in a raceway. Apply the appropriate derating factor to the cord ampacity listed in 310.15(B)(16).

### PC<sup>10</sup> SERIES :: REEL SPECIFICATIONS Listed† :: Accessories only

#### SLIP RING

- External, heavy gauge CPC™ powder coated steel components cover for simple slip ring routine maintenance
- Electrical current runs through a 25AMP / 600V rated slip ring
- Include 5' lead cable & grounding plug (except on less cord models)

#### DESIGN & STRUCTURE

- Selection of electrical accessories
- Compact & lightweight spring driven cord reel save space & facilitate workplace organization
- CoxComposite™ grommet with continuous radius design that does not pinch or catch the cord during operation
- Solid, one-piece, 12GA steel base & support post for maximum stability
- ½" solid steel axle & lubricated precision bearings for smooth rotation

#### RETRACTION

- Enclosed, factory tuned & matched cartridge-style spring motor
- Non-corrosive CoxComposite™ ratchet hub with self lubricating bronze bearings secures cord at desired length

**WARNING:** Cancer and reproductive Harm – See page 19 for more information – [www.P65Warning.ca.gov](http://www.P65Warning.ca.gov)

### TOP REQUESTED UPGRADES & ACCESSORIES

SEE PAGE 16 FOR ADDITIONAL ACCESSORIES



#### UPGRADE YOUR LEAD CABLE

Upgrade the reach of your reel by requesting a 10' lead cable instead of the standard 5'.



#### ORDER LIGHT MODELS

- E SUFFIX: Caged drop light with tool tap plug.
- H SUFFIX: Industrial duty LED light 6X 3W HO
- K SUFFIX: Industrial duty LED light 12X 1W SMD
- M SUFFIX: Industrial duty LED light 8W COB



**COXREELS® PC Series** spring driven "Power Cord" reels are heavy duty, industrial grade power sources. They replace tangled extension cords and self-retract to increase safety, productivity and efficiency. Modeled after the P and SH Series, the PC Series are designed for long-lasting, trouble-free performance even under the most demanding conditions.

## PC SERIES



		CORD								SIZE INDEX
MODEL	ACCESSORY	INLET OUTLET	AWG / NO COND.	CORD FT.	TYPE	VOLTS	AMPS	APRX. LBS.	EZ-COIL MODELS	
<b>FOR INDOOR USE ONLY!</b> All models rated at 115 volts, 60 hz single phase only.										
PC13-3516-A†	Single Industrial Receptacle†		16 / 3	35	SJO	115	13	34	-	1
PC13-5016-A†			16 / 3	50	SJO	115	13	36	EZ-PC13-5016-A	1
PC24-0016-A†			16 / 3	100	SJO	115	13	73	EZ-PC24-0016-A	2
PC13-3512-A†	Single Industrial Receptacle†		12 / 3	35	SJO	115	20	37	-	1
PC13-5012-A†			12 / 3	50	SJO	115	20	40	EZ-PC13-5012-A	1
PC24-0012-A†			12 / 3	100	SJO	115	20	81	EZ-PC24-0012-A	2
PC13-3512-B†	Quad "4 Plug" Industrial Receptacle†		12 / 3	35	SJO	115	20	38	-	1
PC13-5012-B†			12 / 3	50	SJO	115	20	41	EZ-PC13-5012-B	1
PC24-0012-B†			12 / 3	100	SJO	115	20	84	EZ-PC24-0012-B	2
PC13-3516-F†	Duplex G.F.C.I. Metal Industrial Receptacle†		16 / 3	35	SJO	115	13	36	-	1
PC13-5016-F†			16 / 3	50	SJO	115	13	38	EZ-PC13-5016-F	1
PC24-0016-F†			16 / 3	100	SJO	115	13	73	EZ-PC24-0016-F	2
PC13-3512-F†			12 / 3	35	SJO	115	20	39	-	1
PC13-5012-F†			12 / 3	50	SJO	115	20	42	EZ-PC13-5012-F	1
PC24-0012-F†			12 / 3	100	SJO	115	20	83	EZ-PC24-0012-F	2
PC24-0016-X	With Cord, Less Accessory		16 / 3	100**	SJO	115	13	71	EZ-PC24-0016-X	2
PC13-5012-X††			12 / 3	50**	SJO	115	20	40	EZ-PC13-5012-X	1
PC24-0012-X			12 / 3	100**	SJO	115	20	81	EZ-PC24-0012-X	2
PC13-3516-4	With Cord, Less Accessory		16 / 4	35	SJO	115	10	34	-	1
PC13-5016-4			16 / 4	50	SJO	115	10	36	-	1
PC24-0016-4			16 / 4	100	SJO	115	10	74	-	2
PC13-3512-4			12 / 4	35	SJO	115	20	31	-	1
PC13-5012-4			12 / 4	50	SJO	115	20	40	EZ-PC13-5012-4	1
PC24-0012-4			12 / 4	100	SJO	115	20	85	-	2



UL Listed †

UL Listed ††

### PC SERIES :: REEL SPECIFICATIONS

#### SLIP RING

- External heavy gauge CPC™ powder coated steel components cover for simple slip ring routine maintenance
- Electrical current runs through a 25AMP / 600V rated slip ring (35AMP on select models)
- Include 5' lead cable & grounding plug (except on less cord models)

#### DESIGN & STRUCTURE

- Single pedestal cord reel with space saving design facilitates workplace organization
- Guide arm adjusts to wall, floor & overhead positions
- Solid one piece, heavy gauge 1/4" steel base & support post for maximum stability
- Coxreels' exclusive Super Hub™ dual axle support system on models with size index #4
- 1" solid steel axle & lubricated precision bearings for smooth rotation
- Controlled retraction speed up to 80% slower on EZ-COIL models
- Enclosed factory tuned & matched cartridge-style spring motor
- Non-corrosive stainless steel spring, pawl & zinc plated ratchet
- Multi-position lock ratchet mechanism secures cord at desired length



**WARNING:** Cancer and reproductive Harm – See page 19 for more information – www.P65Warning.ca.gov

ELECTRICAL

### REEL DIMENSIONS

Technical Data Sheets Available On Website

SIZE INDEX	W	H	L	X	Y	M	N
1	8 1/2"	14 7/8"	13 1/2"	5"	6"	3"	5"
2	10 1/4"	25 1/2"	24"	6"	6"	4"	5"

Overall Dimensions      Base      Mounting Pattern



#### END USER CAUTION STATEMENTS

- Cord AWG, length, insulation rating, as well as single or multi-phase electrical service must be considered in determining the power rating for each reel. End use application must not exceed the lowest rated component (reel or cord). End user is responsible for determining and ensuring compliance to national and local codes as required.
- Disconnect power source from reel while unspooling / spooling cord.
- Cord should be completely unspooled from the reel when energized. Otherwise follow NEC ampacity derating factors in 310.15(B)(3)(a) where "# current carrying conductors in the service cord" X "#cord layers on the reel" = "# current carrying conductors" in a raceway. Apply the appropriate derating factor to the cord ampacity listed in 310.15(B)(16).

### TOP REQUESTED UPGRADES & ACCESSORIES

SEE PAGE 16 FOR ADDITIONAL ACCESSORIES



#### ORDER EZ-COIL® MODELS

EZ-Coil® is a patented controlled retraction technology offered exclusively on Coxreels' Safety Series reels. It retracts up to 80% slower than conventional reels, resulting in workplace safety, protection from injury & costly property damage.



#### UPGRADE TO SOLID ROLLERS

Heavy duty machined from solid plastic rollers.



#### ORDER LIGHT MODELS

- E SUFFIX: Caged drop light with tool tap plug.
- H SUFFIX: Industrial duty LED light 6X 3W HO
- K SUFFIX: Industrial duty LED light 12X 1W SMD
- M SUFFIX: Industrial duty LED light 8W COB



# 300 SERIES EXHAUST REELS



**COXREELS® 300 Series “Exhaust” spring driven reels provide ventilation where necessary.** This heavy duty frame was built to provide strength, stability, and durability. The 300 Series reels have features found on many of our reels like spun discs, welded steel frame, and enclosed cartridge motor. These reels also feature an easy access panel to access the main drum with internal ducting included, making it readily available.

## EXHAUST REELS

LESS HOSE				SIZE INDEX
MODEL	I.D.	LENGTH	APRX. LBS.	
319-424	4"	24' Capacity	103	1
328-440	4"	40' Capacity	115	2
319-520	5"	20' Capacity	103	1
328-532	5"	32' Capacity	115	2
332-536	5"	36' Capacity	121	3
319-620	6"	20' Capacity	105	1
328-632	6"	32' Capacity	117	2
332-636	6"	36' Capacity	123	3

## 300 SERIES :: REEL SPECIFICATIONS

### DESIGN

- Exhaust hose reel designed to enable the extraction of exhaust fumes directly from the source of their emission and maintain safer shop air quality.
- 6" exhaust ductwork on all models
- For floor, wall, and overhead mounting applications
- Easy access panel to the drum for convenient routine maintenance
- Hose guide rail
- Internal ducting is included

### STRUCTURE

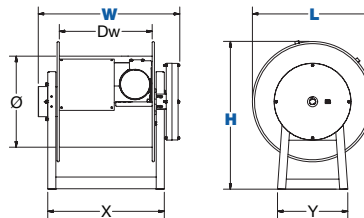
- Reel features an all welded steel frame, no bolts, for strength and durability
- Drum mounted hose guide

### RETRACTION

- Enclosed, factory tuned and matched cartridge-style spring motor
- Cast iron lock ring with non-sparking bronze pawl
- Multi-position lock ratchet mechanism secures hose at desired length

## REEL DIMENSIONS Technical Data Sheets Available On Website

SIZE INDEX	W	H	L	X	Y	Ø	Dw
1	28 1/4"	29 1/2"	24"	23 1/4"	14"	18"	19"
2	37 1/4"	29 1/2"	24"	32 1/4"	14"	18"	28"
3	41 1/4"	29 1/2"	24"	36 1/4"	14"	18"	32"



## COXREELS® 300 FEATURES

### Easy Access Panel

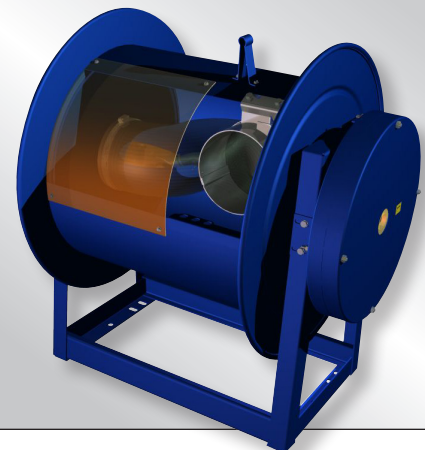
- An easy to remove panel allows full access to the drum

### All Welded Steel Frame

- An all welded steel frame for strength, durability, stability, and prevention of tip-overs

### PERFECT FOR:

**Service & Repair Centers  
Fire Stations  
Maintenance Shops**



**!** WARNING: Cancer and reproductive Harm – See page 19 for more information – [www.P65Warning.ca.gov](http://www.P65Warning.ca.gov)

**COXREELS® 100 Series** hand crank hose reels are **lightweight, compact, versatile reels that perform at working pressures up to 4,000 PSI.** This series saves time and effort while increasing the safety of your work environment. The sturdy “U” shaped frame and all steel construction make this one tough little reel. All listed models are supplied less hose. Stainless steel models are available.

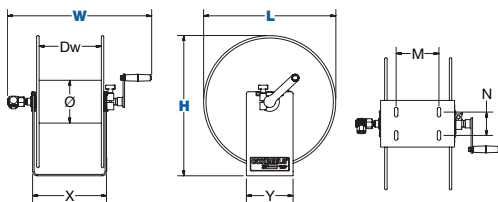
## 100 SERIES

MODEL	LESS HOSE						PSI	APRX LBS.	SIZE INDEX
	STANDARD CAPACITY			OPTIONAL CAPACITY Reducer Required					
	I.D.	O.D.	FT.	I.D.	O.D.	FT.			
<b>112-3-50</b>	3/8"	5/8"	50	1/4"	1/2"	85	4,000	15	<b>1</b>
<b>112-3-100</b>	3/8"	5/8"	100	1/4"	1/2"	150	4,000	19	<b>2</b>
<b>112-3-150</b>	3/8"	5/8"	150	1/4"	1/2"	225	4,000	21	<b>3</b>
<b>117-3-250</b>	3/8"	5/8"	250	1/4"	1/2"	350	4,000	30	<b>4</b>
<b>117-3-400</b>	3/8"	5/8"	400	1/4"	1/2"	550	4,000	33	<b>5</b>
<b>117-3-550</b>	3/8"	5/8"	550	1/4"	1/2"	800	4,000	35	<b>6</b>
<b>112-4-75</b>	1/2"	7/8"	75	3/8"	3/4"	100	4,000	21	<b>3</b>
<b>117-4-225</b>	1/2"	7/8"	225	3/8"	3/4"	315	4,000	31	<b>5</b>
<b>117-4-350</b>	1/2"	7/8"	350	3/8"	3/4"	450	4,000	37	<b>6</b>
<b>117-5-100</b>	3/4"	1 1/4"	100	1/2"	1"	150	4,000	35	<b>7</b>



### REEL DIMENSIONS Technical Data Sheets Available On Website

SIZE INDEX	W	H	L	X	Y	M	N	Ø	Dw
<b>1</b>	14 1/2"	13"	12"	6"	6"	4"	3"	5 1/2"	4 1/2"
<b>2</b>	18 1/4"	13"	12"	9 1/2"	6"	5 1/2"	3"	5 1/2"	8"
<b>3</b>	22 3/4"	13"	12"	14"	6"	10"	3"	5 1/2"	12 1/2"
<b>4</b>	18 1/4"	18"	17"	9 1/2"	6"	5 1/2"	3"	5 1/2"	8"
<b>5</b>	22 3/4"	18"	17"	14"	6"	10"	3"	5 1/2"	12 1/2"
<b>6</b>	28 1/4"	18"	17"	19 1/2"	6"	15 1/2"	3"	5 1/2"	18"
<b>7</b>	23 1/4"	18"	17"	14"	6"	10"	3"	5 1/2"	12 1/2"



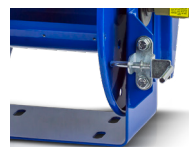
### TOP REQUESTED UPGRADES & ACCESSORIES

SEE PAGE 16 FOR ADDITIONAL ACCESSORIES



#### ADD ROLLERS

4-way enclosed pinch-proof stainless steel rollers are 1 in diameter supported by powder coated steel brackets. Weight: Add 10 lbs. to reel weight.



#### ADD PINLOCK

The spring-loaded lock pin assembly is designed to lock & secure the reel, even in mobile conditions over rough terrain.



#### STRENGTHEN DRUM WITH BRAWNY OPTION

The Brawny feature closes the drum opening, increasing the drum strength to resist potential damage from hose constriction under increased or pulsing pressure usage.



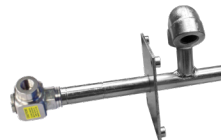
#### UPGRADE TO CAPTIVE BEARING SWIVEL

Featuring heavy duty ball bearings for smooth rotation and increased side load capabilities, our captive bearing swivel options are available in several seal configurations and material choices and can be factory installed on all of our hand crank and motorized reels lines. Also available in 304 stainless steel.



#### UPGRADE TO STAINLESS STEEL SWIVEL

Based on the upgraded medium pressure swivel, the stainless steel swivel is machined from solid 316 stainless steel and features increased wall thicknesses with upgraded seals and backup rings.



#### UPGRADE TO STAINLESS STEEL FLUID PATH

This options uses the same swivel as described in the stainless steel swivel upgrade and couples it to an upgraded 304 stainless steel plumbing axle to improve the corrosion resistance of the entire fluid path.



# CM & DM SERIES PORTABLE HOSE REELS



**COXREELS® CM Series “Caddy Mount” and DM Series “Dolly Mount” hand crank hose reels offer lightweight, compact portability for long lengths of hose.** This series eliminates the task of manually coiling and uncoiling hose and easily transports it to the job site on wheels. High pressure applications are never a problem with a 4,000 PSI rating. Also, a 4' inlet hose with 3/4" female fitting and male garden hose adaptor is available with this series for use with garden hose. See options below.

## PORTABLE HOSE REELS SERIES

MODEL	LESS HOSE						PSI	APRX LBS.	SIZE INDEX
	STANDARD CAPACITY			OPTIONAL CAPACITY Reducer Required					
	I.D.	O.D.	FT.	I.D.	O.D.	FT.			
<b>CM SERIES - CADDY MOUNT</b>									
<b>112-3-100-CM</b>	3/8"	5/8"	100	1/4"	1/2"	150	4,000	18	<b>1</b>
<b>112-3-150-CM</b>	3/8"	5/8"	150	1/4"	1/2"	225	4,000	22	<b>2</b>
<b>117-4-225-CM</b>	1/2"	7/8"	225	3/8"	3/4"	315	4,000	28	<b>3</b>
<b>DM SERIES - DOLLY MOUNT</b>									
<b>117-3-200-DM</b>	3/8"	5/8"	200	1/4"	1/2"	350	4,000	37	<b>4</b>
<b>117-4-225-DM</b>	1/2"	7/8"	225	3/8"	3/4"	315	4,000	39	<b>5</b>

## CM & DM SERIES :: REEL SPECIFICATIONS

### SWIVEL

- External fluid path with machined from solid brass 90° full-flow NPT swivel inlet
- Up to 4,000 PSI working pressure
- Swivel Seals: NITRILE

### CM SERIES DESIGN & STRUCTURE

- High quality, one-piece 1" steel tube frame structure
- Hose Control bar prevents hose from slipping off the discs
- Adjustable tension brake to prevent “free-wheeling”
- Base has holes for temporary or permanent installation

### DM SERIES DESIGN & STRUCTURE

- High quality, three piece 1-1/4" steel tube frame structure
- Solid 8" rubber tires for easy transport
- Rubber front feet prevent reel from slipping forward
- Removable handle allows for compact storage
- Adjustable tension brake to prevent “free-wheeling”

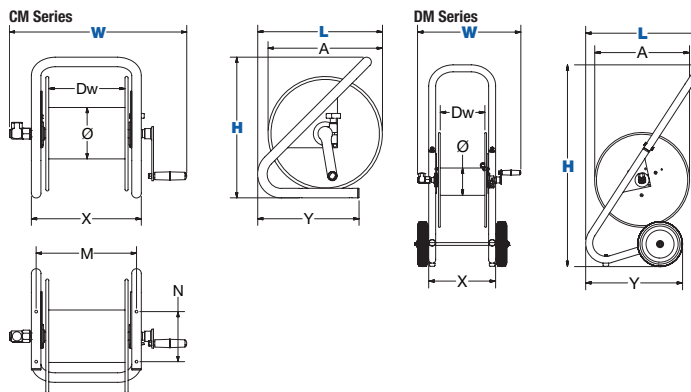
### RETRACTION

- Direct hand crank rewind

## REEL DIMENSIONS Technical Data Sheets Available On Website

SIZE INDEX	W	H	L	X	Y	M	N	Ø	Dw
<b>1</b>	18 1/2"	14 3/4"	13 1/8"	11 1/2"	10 5/8"	10 1/2"	5 1/4"	5 1/2"	8"
<b>2</b>	23"	14 3/4"	13 1/8"	16"	10 1/2"	10 1/2"	5 1/4"	5 1/2"	12 1/2"
<b>3</b>	23"	18 1/2"	18"	16"	12 5/8"	10 1/2"	5 1/4"	5 1/2"	12 1/2"
<b>4</b>	19"	36 1/4"	21"	12"	17 1/2"	-	-	5 1/2"	8"
<b>5</b>	23 1/2"	36 1/4"	21"	16 1/2"	17 1/2"	-	-	5 1/2"	12 1/2"

Overall Dimensions      Base      Mounting Pattern      Drum



**WARNING:** Cancer and reproductive Harm – See page 19 for more information – [www.P65Warning.ca.gov](http://www.P65Warning.ca.gov)

## TOP REQUESTED UPGRADES & ACCESSORIES

SEE PAGE 16 FOR ADDITIONAL ACCESSORIES



### GARDEN HOSE KIT

You are able to connect any hose to a reel with 1/2" plumbing. You will be able to use any garden hose for everything from watering plants to washing your car. Kit includes: NPT to garden hose adaptor & adaptor hose.



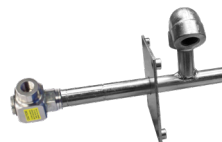
### UPGRADE TO CAPTIVE BEARING SWIVEL

Featuring heavy duty ball bearings for smooth rotation and increased side load capabilities, our captive bearing swivel options are available in several seal configurations and material choices and can be factory installed on all of our hand crank and motorized reels lines. Also available in 304 stainless steel.



### UPGRADE TO STAINLESS STEEL SWIVEL

Based on the upgraded medium pressure swivel, the stainless steel swivel is machined from solid 316 stainless steel and features increased wall thicknesses with upgraded seals and backup rings.



### UPGRADE TO STAINLESS STEEL FLUID PATH

This options uses the same swivel as described in the stainless steel swivel upgrade and couples it to an upgraded 304 stainless steel plumbing axle to improve the corrosion resistance of the entire fluid path.



WASHDOWN

**COXREELS® 1125 Series** hand crank and motorized hose reels have the features demanded by industry professionals. The industry preferred design features a sturdy one piece all welded "A" frame base, low profile outlet riser and open drum slot design provides a non-crimping, flat smooth hose wrap.

## 1125 SERIES - ALL REELS SUPPLIED LESS HOSE

MODEL	STANDARD CAP			OPTIONAL CAP. Reducer required			INLET SWIVEL & OUTLET RISER	PSI	APPR. LBS.	SIZE INDEX
	I.D.	O.D.	FT.	I.D.	O.D.	FT.				
1125-4-100	1/2"	7/8"	100	3/8"	3/4"	140	1/2" F NPT	3,000	36	1
1125-4-200	1/2"	7/8"	200	3/8"	3/4"	300	1/2" F NPT	3,000	39	2
1125-4-325	1/2"	7/8"	325	3/8"	3/4"	450	1/2" F NPT	3,000	48	3
1125-5-100	3/4"	1 1/4"	100	1/2"	7/8"	200	3/4" F NPT	3,000	42	4
1125-5-250	3/4"	1 1/4"	250	1/2"	7/8"	500	3/4" F NPT	3,000	59	5
1125-6-100	1"	1 7/16"	100	3/4"	1 1/4"	150	1" F NPT	3,000	69	6



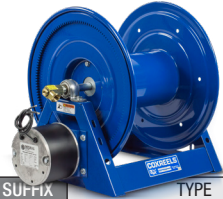
## REEL DIMENSIONS Technical Data Sheets Available On Website

SIZE INDEX	W			H		L	X	Y		Ø	Dw
	CRANK	ELEC.	AIR / HYD.	CRANK	ELEC.			CRANK	ELEC.		
1	19 1/2"	19 3/4"	17"	18 3/4"	19 1/4"	17 5/8"	11 3/8"	15 3/8"	16"	6 1/4"	6"
2	25 1/2"	25 3/4"	23"	18 3/4"	19 1/4"	17 5/8"	17 3/8"	15 3/8"	16"	6 1/4"	12"
3	31 1/2"	31 3/4"	29"	18 3/4"	19 1/4"	17 5/8"	23 3/8"	15 3/8"	16"	6 1/4"	18"
4	26 3/4"	26"	23 3/8"	18 3/4"	19 1/4"	17 5/8"	17 3/8"	15 3/8"	16"	6 1/4"	12"
5	42 3/4"	42"	39 3/8"	18 3/4"	19 1/4"	17 5/8"	33 3/8"	15 3/8"	16"	6 1/4"	28"
6	44 1/2"	42 3/8"	40 3/4"	18 1/2"	19 1/8"	17 5/8"	33 3/8"	15 3/8"	16"	8 1/4"	28"

Overall Dimensions

Base

Drum



### MOTORIZED THE REWIND OF YOUR REEL

Featuring a direct gear drive, the 1125 Series drive system is more dependable and maintenance free than a chain and sprocket. A solid steel ring gear is directly welded to the side of the disc for added rigidity and strength. Choose from several motor options shown in the table below.

SEE PAGE 11 FOR ADDITIONAL MOTOR ACCESSORIES

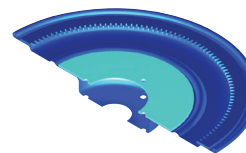
SUFFIX	TYPE	DESCRIPTION	ADD ON LBS
A	AIR - 4 VANE	ALUMINUM BODY AIR MOTOR	8
AB	AIR - 6 VANE	CAST IRON AIR MOTOR	8
C	FRONT HAND CRANK	BEVEL GEARED CRANK	3
E	12 V DC, 1/3 HP	REVERSIBLE	13
ED	12 V DC, 1/2 HP EXP.	EXPLOSION PROOF, REVERSIBLE	26
EF	24 V DC, 1/3 HP	REVERSIBLE	13
EB	24 V DC, 1/2 HP EXP.	EXPLOSION PROOF, REVERSIBLE	26
EA	115 V AC, 1/2 HP EXP.	EXPLOSION PROOF REVERSIBLE AC RECTIFIED	26
EJ	230 V AC, 1/2 HP EXP.	EXPLOSION PROOF REVERSIBLE AC RECTIFIED	26
H	HYDRAULIC	END PORTED 9/16-18 UNF	6

## TOP REQUESTED UPGRADES & ACCESSORIES



### 5,000 PSI HIGH PRESSURE MODELS

Upgrade to 5000 PSI with a steel ball bearing swivel. Machined from high strength steel and nickel plated for corrosion resistance, the ball bearing swivel features maximum flow and enhanced load bearing capabilities. Swivel Seals: AFLAS



### STRENGTHEN DRUM WITH BRAWNY OPTION

10 Gauge plates welded into each disc to keep them from bowing. Prevents deformations & eventual crushing of the drum that can be caused by hose pressure. The center drum has been thickened from 16GA to 14GA.



### UPGRADE TO STAINLESS STEEL

**STAINLESS STEEL SWIVEL / STAINLESS STEEL CAPTIVE BEARING SWIVEL:** the stainless steel swivel is machined from solid 304 stainless steel for increased corrosion resistance.

**STAINLESS STEEL FLUID PATH:** This option uses the same swivel as described in the stainless steel swivel upgrade and couples it to a upgraded 304 stainless steel plumbing axle to improve the corrosion resistance of the entire fluid path.



### ADD PINLOCK TO MOTORIZED MODELS

The spring-loaded lock pin assembly is designed to lock & secure the reel, even in mobile conditions over rough terrain.

## 1125 SERIES :: REEL SPECIFICATIONS

### SWIVEL

- External fluid path with machined solid brass 90° full-flow NPT swivel (Nickel plated steel swivel on 1" models)
- Swivel Seals: NITRILE  
AFLAS on 1" steel models  
NITRILE on 1" stainless fluid path models
- External 90° full-flow NPT swivel with electroless nickel plated steel inlet (on high pressure HP & 1" steel models)
- Swivel Seals: AFLAS (on high pressure HP prefix models)

### DESIGN & STRUCTURE

- All welded steel "A" frame construction for superior reel structure
- Exclusive low profile outlet riser & open drum slot design for flat smooth hose wrap
- Permanently lubricated self-aligning pillow block bearings for trouble-free & smooth rotation
- Adjustable tension brake to prevent "free-wheeling" during operation
- Long-handled locking pin to secure reel from rotation during transport or storage

### RETRACTION

- Reliable direct gear drive on motor driven models providing quiet & smooth retraction - NO CHAIN
- Solid steel direct hand crank with smooth round handle



**WARNING:** Cancer and reproductive Harm – See page 19 for more information – [www.P65Warning.ca.gov](http://www.P65Warning.ca.gov)

SEE PAGE 16 FOR ADDITIONAL ACCESSORIES



# ACCESSORIES FIRE STATION & MAINTENANCE CENTER REELS

## SWIVELS & O-RING COMPATIBILITY CHART

	Brass	Zinc Plated Steel	Electroless Nickel Plated Steel	Stainless Steel	In-Line Nickel Plated Steel or Stainless Steel	Melonized Steel
<b>Available Swivel I.D.</b> Female NPT fittings (*BSP fittings available)	1/4"	•	•			•
	3/8"	•	•	•		
	1/2"	•	•	•		
	3/4"	•	•	•		
	1"			•		
	1 1/2"			•	•	
	2"			•	•	
<b>Available Swivel Seals</b> (Refer to O-Ring Compatibility Chart for desired application)	Buna	•	•	•	•	
	EPDM	•	•	•	•	
	Viton®	•	•	•	•	•
	AFLAS			•	•	

### O-RING COMPATIBILITY CHART

Intended as a general guideline only. Users must test under their own operating guidelines to determine suitability. Please consult factory if your application is not listed.  
1 = Recommended | 2 = Fair | 3 = Poor | 4 = Unsatisfactory

	ACETYLENE	AIR (-30°F TO +25°F)	AIR (+25°F TO 200°F)	AIR (200°F TO 300°F)	AIR (300°F TO 400°F)	ANTIFREEZE	FUEL OIL / KEROSENE	GREASE (PETROLEUM BASED)	HYDROCHLORIC ACID	MOTOR OIL (PETROLEUM BASED)	NATURAL GAS	NITROGEN	OXYGEN (200°F TO 300°F)	OXYGEN (COLD)	PESTICIDES	STEAM (BELOW 300°F)	STEAM (300°F TO 400°F)	SEA WATER	WATER (UP TO 200°F)	
→	1	1	1	3	4	2	1	1	3	1	1	1	4	2	2	4	4	1	1	1
→	1	1	1	2	4	1	4	4	2	4	4	1	4	2	4	1	2	1	1	1
→	1	2	1	1	1	2	1	1	1	1	1	2	1	1	2	3	2	2	2	
→	1	3	1	1	1	1	2	1	2	1	1	4	2	1	2	3	1	1	1	



#### Brass Swivels

CNC machined from solid brass swivels are built for general multi-purpose applications. Configured in a 90 degree fluid path with full flow designed. Working pressure up to 3,000 PSI & -40°F to 400°F.



#### Zinc Plated Steel Swivels

Machined from strong low carbon steel & configured in a 90 degree fluid path with full flow designed. Zinc plated steel swivels are recommended for non-corrosive applications. Working pressure up to 5,000 PSI & -40°F to 400°F.



#### Electroless Nickel Plated Steel Swivels

Machined from strong low carbon steel & configured in a 90 degree fluid path with full flow designed. Nickel plated steel swivels are recommended for mildly corrosive applications. Working pressure up to 4,000 PSI & -40°F to 400°F.



#### Stainless Steel Swivels

Machined from high quality, pure 316 stainless steel & configured in a 90 degree fluid path with full flow design. Stainless steel swivels offer superior corrosion protection. Working pressure up to 5,000 PSI & -40°F to 400°F.



#### In-line Swivels

Nickel plated steel or stainless steel swivel configured in an in-line fluid path with full flow design. Working pressure up to 1,500 PSI for 1 1/2" I.D. & 1,000 PSI for 2" I.D. -40°F to 400°F.



#### Melonized Steel Swivels

Configured in a 90 degree fluid path with 1/4" ports, melonized steel swivels are used for hydraulic applications. Working pressure up to 10,000 PSI & -5°F to 400°F.

\*Temperature rating depends on the seal type selected

### MOUNTING & ROLLER BRACKETS

	PART NO.	P	SH, MP & HP	C	PC
<p><b>Swing Bracket</b> For vertical surface mounting, allows reel to swing 180°. Powder coated crinkle black 1/4" steel. Weight: 5 lbs.</p>	<b>15720</b>	•	•		•
	<b>15725</b>			•	
<p><b>Swivel Bracket</b> For horizontal surface mounting, ball bearing rotation, allows reel to swivel 345°. Powder coated crinkle, black heavy gauge steel. Weight: 6 lbs. NOT FOR USE IN CEILING APPLICATIONS.</p>	<b>15721</b>	•	•	•	•
<p><b>EZ-Up Bracket</b> Reel easily slides in &amp; out for easy overhead mounting. Use as an alternative to the #MR-1. Must be ordered with #15724 for "I" or "H" beam installations. Weight: 6.5 lbs.</p>	<b>15723</b>	•	•	•	•
<p><b>EZ-Up "I" or "H" Beam Adapter</b> Must be ordered with #15723. Powder coated crinkle black, all steel construction. Weight: 5 lbs.</p>	<b>15724</b>	•	•	•	•
<p><b>Mounting Bracket</b> For overhead mounting, fits 3" to 8 1/2" flange on "I" or "H" beam. Powder coated crinkle black 3/16" bent steel. Weight: 13 lbs.</p>	<b>MR-1</b>	•	•		•
	<b>MRT-1</b>			•	
<p><b>4-Way Roller Bracket</b> Heavy gauge steel, powder coated Coxreels blue (4RB) Available in stainless steel (4RB-SS). Weight: 1 lb.</p>	<b>4RB</b> 1/4"-3/4"	•	•	•	•
	<b>4RB-SS</b> 1/4"-3/4"				
<p><b>4-Way Roller Bracket</b> Heavy gauge steel, powder coated Coxreels blue with stainless steel rollers (4SRB) Available in stainless steel (4SRB-SS). Weight: 1 lb.</p>	<b>4SRB-4</b> 1/2"	•	•	•	•
	<b>4SRB-5</b> 3/4"				

### HOSE STOPS & GUARDS

HOSE STOPS PART NO.	HOSE GUARD PART NO.	HOSE		OVERALL
		I.D.	O.D.	
<b>131</b>	<b>237-1</b>	1/4"	1/2"	2 1/2"
<b>131-3</b>	<b>237-1</b>	3/8"	2 1/32"	2 1/2"
<b>131-4</b>	<b>398-1</b>	1/2"	3/4"	2 1/2"
<b>254</b>	-	1/2"	3/4"	3 1/2"
<b>430</b>	<b>398-1</b>	3/4"	1"	3 1/2"
<b>20214</b>	-	1"	1 9/16"	5"
<b>20215</b>	-	1 1/4"	1 13/16"	5"
<b>20216</b>	-	1 1/2"	2 1/16"	5"
<b>20217</b>	-	2"	2 9/16"	5"

### QUICK DISCONNECTS

PART NO.	I.D.	CONNECTION	PSI
<b>10759-1</b>	1/4"	NPT (F)	300
<b>10759-2</b>	3/8"	NPT (F)	300

Quick disconnect couplings thread onto end of hose fitting to provide fast, leak-proof connections for low pressure hose lines. Conveniently connect, interchange, and secure pneumatic tools or other spraying devices to any air, water, chemical or other hose lines.

### BEND RESTRICTORS

ADD SUFFIX	I.D.	DESCRIPTION	PSI
<b>-BxB</b>	1/4"	Black PVC Bend Restrictor	300
<b>-BxB</b>	3/8"	Black PVC Bend Restrictor	300
<b>-BxB</b>	1/2"	Black PVC Bend Restrictor	300

Designed to limit the degree of bending without compromising the integrity of the hose assembly while also preventing the hose-end from kinking, excessive wearing, and tearing.

### GARDEN HOSE KIT








	AVAILABLE ON	
	PART NO.	1/2" Plumbing On Any Reel
<p><b>Garden Hose Kit</b> You are able to connect any hose to a reel with 1/2" plumbing. You will be able to use any garden hose for everything from watering plants to washing your car. Kit includes: NPT to garden hose adaptor &amp; adaptor hose.</p>	<b>15717</b>	•












# ACCESSORIES

## SPEED CONTROLLERS FOR MOTORIZED MODELS

	PART NO.	MOTOR OPTIONS					
		E	EB	ED	EA	EJ	EF
 <b>Explosion Proof Stationary Push Button Switch</b> For 12V D.C. applications, must be used with solenoid. Cast 3/4" N.P.T. hub inlet.	20882	•					
 <b>Vapor Proof Junction Box</b> Includes box cover & gasket, has three 3/4" N.P.T. hubs.	20883	•	•	•	•	•	•
 <b>General Purpose Reversing Switch</b> For direct starting & reversing of A.C. rewind motor.	15210				•	•	
 <b>Sealed Push Button Switch</b> Weather proof, dust proof momentary contact. To be used with solenoid.	20876	•	•	•	•	•	•
 <b>Solenoid Relay</b> 12V D.C. for activating motor.	20877	•		•			
 <b>Circuit Breaker</b> 50 amp automatic reset, circuit breaker. A circuit breaker is recommended for all 12V D.C. explosion proof motors.	20878	•		•			
 <b>Switch Box</b> (Includes #20876, #20877, & #20878 & all parts needed to assemble the entire switch box) - Casing is powder coated crinkle black.	8281	•		•			

## SPEED CONTROLLERS FOR MOTORIZED MODELS

	PART NO.	MOTOR OPTIONS					
		E	EB	ED	EA	EJ	EF
 <b>Electrical Box &amp; Switch</b> - Installs on any DC electric motor kit. - Push button switch mounts to frame or to 3-Way Pin Lock. - Works with all guards and accessories.	16780-12 12 VDC	•		•			
	16780-24 24 VDC		•				•
 <b>115/230 AC/Volt Variable Speed Controller</b> - 10-amp fuse. - On/off push button switch. - Forward/reverse feature.	20875				•	•	
 <b>115/230 AC/Volt Variable Speed Controller</b> - 10-amp fuse. - On/off push button switch.	20874				•	•	
 <b>115/230 AC/Volt Variable Speed Controller</b> 10-amp fuse.	20873				•	•	
 <b>12 Volt DC Electric Motor Variable Speed Controller</b> On/off push button switch. • Relay, 50-amp circuit breaker. • Forward/reverse feature.	20872	•		•			
 <b>12 Volt DC Electric Motor Variable Speed Controller</b> On/off push button switch. • Relay, 50-amp circuit breaker.	20871	•		•			
 <b>12 Volt DC Electric Motor Variable Speed Controller</b>	20870	•		•			

# CUSTOMIZE YOUR REEL FROM CONCEPT TO COMPLETION






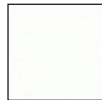

## CUSTOMIZE YOUR REEL WITH COXREELS CUSTOM PRODUCTS:

Our engineering capabilities and manufacturing processes allow us to design and build top quality products for any conceivable application where reels are needed.

- Customize fluid paths/axes or create custom brackets, mounts, and accessories.
- Integrate with your specific hardware, systems, or devices.
- Modify drums, add divider disks, manipulate openings, or integrate hose handling devices.
- Combine features of various reel model lines, creating your own hybrid reel.
- Create custom retraction systems.
- Increase temperature and pressure capabilities, or multiply fluid paths.
- The possibilities are only limited by your imagination!

## POWDER COAT OPTIONS\*

3 digit suffix for spring driven or 4 digit suffix for hand crank & motorized models.

			
-BXX or -BXXX Blue	-RXX or -RXXX Red	-GXX or -GXXX Gray	
			
-KXX or -KXXX Gloss Black	-CXX or -CXXX Crinkle Black	-WXX or -WXXX White	-NXX or -NXXX Green

\*Minimum quantity & or dollar amount may apply



# EZ-COIL®

## SAFETY REWIND SYSTEM

EZ-Coil® is a patented controlled retraction technology offered exclusively on Coxreels' Safety Series reels. EZ-Coil® retracts up to 80% slower than conventional reels, resulting in workplace safety, protection from injury & costly property damage. **NOBODY SHOULD BE WITHOUT EZ-COIL®!**

	Conventional SPRING DRIVEN REELS	COXREELS' EZ-COIL
<b>SPEED</b>	25 ft./sec.	5 ft./sec.
<b>WHIPPING</b>	5-15 ft.	1 ft.
<b>IMPACT</b>	500 ft./lbs.	0-1 ft./lbs.

Based on an independent evaluation performed by COXREELS. Depending on certain conditions, results may vary.



www.coxreels.com • 1.800.COX.REEL

FIRE STATION REELS

# HOW TO ORDER

The size, length, and type of hose to be handled are primary factors in selecting the proper reel for your job. The following points should be considered:

## 1. HOSE I.D., O.D. & LENGTH

When space permits, select a reel with greater hose capacity than you require. This allows you to rewind the hose with less care and keeps the hose well protected within the disc dimension, even if the hose is not wound in uniform coils. (See hose selection chart below)

## 2. SIZE & TYPE OF SWIVEL JOINT & SEAL FOR INLET & OUTLET

In selecting your reel, please note the size of your hose versus the inlet and outlet sizes. Reducing your fitting and hose size will allow for more hose capacity. Please refer to the o-ring seal compatibility chart on page 50 for special application requirements.

## 3. RETRACTION METHOD & PROPER USE

Choose from Spring Driven, Hand Crank, or Motor Driven retraction.

**SPRING DRIVEN:** Automatic rewind requiring no power source. Operator is to guide the hose or cord as it self-retracts and wraps around the drum. **For models to be mounted 15 feet above the floor, consult factory and specify on P.O.'s for proper spring retraction motor.**

**HAND CRANK:** Operator must manually crank the reel and guide the hose or cord evenly as it wraps around the drum to reach full capacity.

**MOTOR DRIVEN:** Requires a power source to operate in AC, DC, Air, or Hydraulic power. On/Off switches and speed controllers are available to help control retraction speed. You must guide the hose or cord efficiently back on the reel to reach full capacity.

## 4. MOUNTING POSITION

Determine which mounting position you require. All reels are shipped in the floor-ceiling mount (FM) position with the exception of the "T," "EN," and "SD" Series, which are shipped in the wall-truck mount (WM) position. See diagram to the right for the "SP & DP" Series as well.

## 5. CHOOSE TYPE OF HOSE

Consider temperature, product type, and pressure required (PSI).

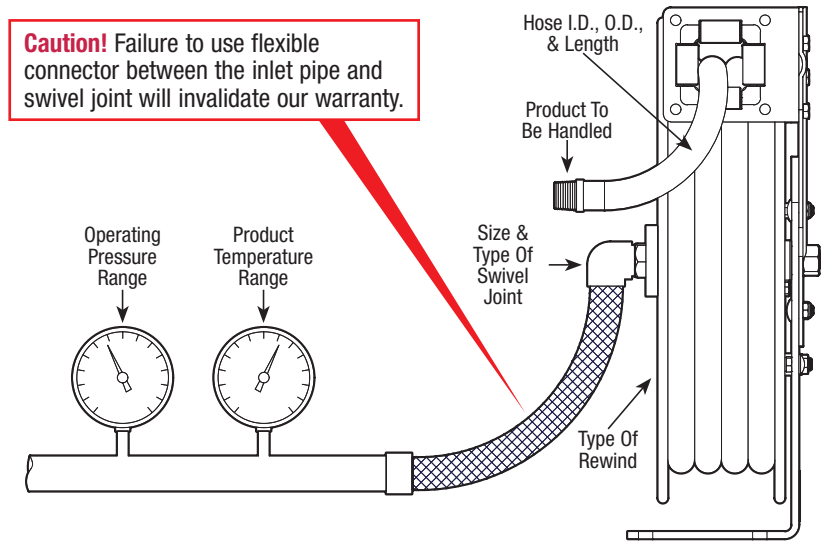
Always use good quality hose rated for the service and operating pressure required. Poor quality hose tends to expand and contract under pressure surges. When this happens, hose remaining on the reel may bind and become difficult to handle. In extreme cases, poor quality hose may expand under pressure to the extent that the reel becomes distorted and inoperable.

## 6. ADDITIONAL OPTIONS

**Customize your reel to meet your exact requirements.** Once you select your reel type, consider the different add-on features such as roller brackets, special mounting brackets, carry handles or a cart for portability. See the options available indicated on each page.

## BASIC INFORMATION

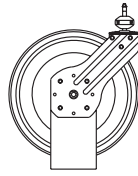
The Diagram Below Indicates The Basic Information Which Should Be Determined Before Ordering.



## MOUNTING POSITIONS

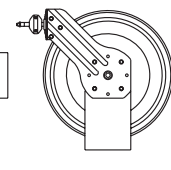
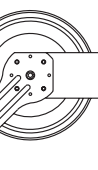
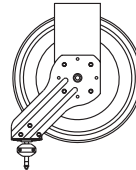
The Diagrams Below Indicate The Mounting Positions Which Should Be Determined Before Ordering.

**ALL MODELS** with the exception of the SP Series



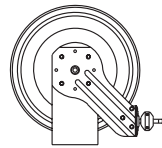
**"FM" Floor-Ceiling Mount**

All reels are shipped in this position unless specified with the exception of the T, EN, SD, SP & DP Series

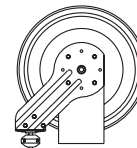


**"WM" Wall-Truck Mount**

T, EN & SD Series are shipped in this position unless specified



**"BM" Bottom-Truck Mount**



**"DM" Down Mount**

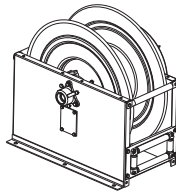
## E-MAIL INFORMATION

If you would like more information, feel free to e-mail us concerning your order or general questions you may have.

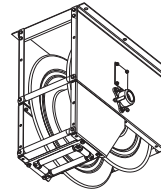
For general info or questions:  
[info@coxreels.com](mailto:info@coxreels.com)

For technical assistance:  
[techassist@coxreels.com](mailto:techassist@coxreels.com)

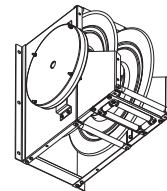
## SP SERIES



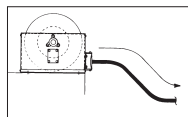
**"FM" Floor-Ceiling Mount (Drag)**  
All SP & DP Series are shipped in this position unless specified



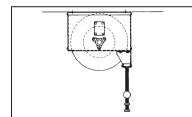
**"CM" Ceiling Mount (Lift, Stretch, or Recover)**



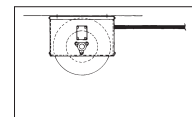
**"WM" Wall Mount (Lift)**



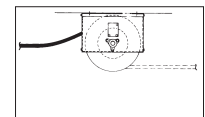
**DRAG**  
With Roller Guide



**LIFT**  
With Roller Guide



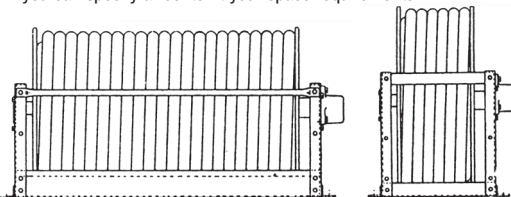
**STRETCH**  
With Or Without Roller Guide  
Special Spring Motor Required,  
Consult Factory



**RECOVER**  
(Pick-up) No Roller Guide Needed,  
Special Spring Motor Required,  
Consult Factory

## HOSE SELECTION

The drawing below shows two reels with different shapes and dimensions but with identical hose capacity. In most cases, more than one reel will handle the size and length of hose you need, so you can specify a reel to fit your space requirements.



See Page 50 For Hose Assemblies and Component Parts

## 2 YEAR WARRANTY

Products manufactured by Coxreels are warranted for a period of two years from the date of sale to original purchaser. If within such warranty period any such equipment is proved, to Coxreels' satisfaction, to be defective, Coxreels shall be liable for the repair or, at Coxreels' option, replacement when the product is returned, freight prepaid, to Coxreels' plant or a Coxreels' service dealer. Coxreels' obligation hereunder shall be confined to such repair or replacement and shall be further conditioned upon Coxreels receiving written notice of any alleged defect within ten days after its discovery. Coxreels assumes no responsibility for improper choice of models or where products are used in excess of rated capacities and design functions, or under abnormal conditions. We make available a free engineering service to help with any product selection, application or problem.

Warranty is void if the product or any part thereof has been tampered with, altered, or repaired by other than authorized service personnel. Coxreels' responsibility ceases upon delivery to any common carrier, and we do not, unless previously instructed, insure shipments beyond point of delivery to such carrier. Any products, components or accessories that are not manufactured by Coxreels and are supplied by other manufacturers are subject to their respective guarantees or warranties. Certain products will carry their own warranties. Equipment specially built to customers' specifications and requirements is not subject to cancellation nor returnable for credit under any condition. We reserve the right to modify or alter materials, dimensions, design and construction, when necessary, to improve performance.

## RETURN POLICY

- No material will be accepted for return without written authorization by the factory, and a return goods authorization number assigned. Materials must be returned prepaid. A 20% restocking fee and a \$5.00 repacking charge normally applies. No material will be accepted for a credit after one year from the date of purchase. Custom products and special orders are not returnable.

## STATEMENT OF HOSE APPLICATIONS

Coxreels does not manufacture any hose. All hose supplied by Coxreels is selected from reliable commercial sources and is recommended for application on the basis of data supplied by the manufacturer. Coxreels assumes no responsibility for any other application or use. Hose supplied by Coxreels carries the warranty as listed by the manufacturer (90 days).

## TERMS

- Net 30 days on approved credit
- Minimum billing \$25.00
- Service charge 11/2% on past due accounts

## FREIGHT

- F.O.B. Factory
- Our responsibility ceases upon delivery to common carrier. Consignee must file claim for shortage and damaged freight with the carrier.

## DELIVERY

- Most standard items are shipped in five - ten business days or less. Consult customer service for availability.



## Coxreels' Customer Service - 1.800.269.7335

Call and request a Returned Merchandise Authorization# (RMA #). Warranty claims must be made by authorized Coxreels distributors. Be prepared to give the following information: product model number, serial number and purchase invoice number.

- Replacement parts ordered will be invoiced to your account.
- Once given an RMA #, you must write it on all boxes and paperwork. Coxreels will not accept your return without an RMA #.
- Upon receiving the return, if it is determined to be covered under warranty, a credit memo will be issued and mailed to you for your records.



## PLEASE REVIEW ALL SAFETY INFORMATION BEFORE CHOOSING AND USING ALL EQUIPMENT

**SERIOUS INJURY, DEATH AND DESTRUCTION OF PROPERTY** can result from improper selection or improper use of products described in this catalog. Since COXREELS has no control over the number and variety of applications for which its products may be purchased or the conditions under which they may be used, COXREELS liability on any claim, whether in contract, tort (including negligence), or otherwise, for any loss or damage shall in no case exceed the price paid for product or any part thereof which give rise to claim. However, the general information contained herein shall allow the customer to select and assume all responsibility for product acceptability and fitness for specific applications. As always, COXREELS technical assistance and support is available for your convenience.



### WARNING - USER RESPONSIBILITIES

The customer, installer, and end users shall, through analysis and testing, assume sole responsibility in making the final selection of reels and accessories. Furthermore, these parties shall hold COXREELS harmless for all liability, claims, suits, and expenses incurred. These parties shall ensure training, performance, endurance, routine inspections, maintenance, safety precautions and warnings regarding the application are enforced at all times. COXREELS is not responsible for use of products in excess of rated and recommended capacities, design functions, or abnormal conditions.



### CAUTION - PROPER SELECTION OF ACCESSORIES

Coxreels offers a wide variety of accessory items and optional features for its reels. It is the sole responsibility of the customer, installer, and end users to ensure that the proper items and features have been selected to fit the application. Consult with Coxreels technical support for available accessories and optional features which will help you to keep your product safe in its environment. These items may include mounting brackets, guards, guides, and electrical components.



### WARNING - FOLLOW INSTRUCTIONS

The customer, installer, and end users shall ensure that all potential users of these products receive continual training and access to all relevant product manuals and safety instructions. This information should be thoroughly reviewed prior to installation, stored and reviewed continually during use of the product. Coxreels assumes no responsibility for fitness of installation

and continued use in specific applications. Any overhead installations should be such that the reel is not supported solely by bolts under tension. A safety chain or cable is necessary to eliminate potential for damage or personal injury.



### IMPORTANT - FOLLOW GOOD MAINTENANCE PRACTICES

When receiving your products, establish a program for inspection, testing, and periodic replacement of worn items depending on factors such as; severity of application, frequency of equipment use, and past performance indicators. Use only properly trained persons to perform these duties. Update training periodically. Document the maintenance, inspections, and testing of products. Never allow an improperly functioning reel or accessory product to be put into use.

Documented inspections shall include in part, pressurized units, swivel joints, hose, hose fittings, cable, mounting hardware, roller guides and any such moving parts. Never allow the use of hoses or cables other than what is intended in the design of the reel. Changes in diameter, weight, length, or flexibility can affect the function and may cause damage or personal injury. Consult specific product manuals, or factory, with any questions regarding proper maintenance practices.

The use of any replacement components other than those provided by Coxreels is prohibited. Coxreels shall be held harmless from any improper selection of such components which may affect function and overall safety of the product.

**NOTE:** All designs, specifications, and dimensional data contained in this book are subject to change without notice. No additional warranties, express or implied, including warranties of merchantability for fitness for a particular purpose, are created by the descriptions and depictions of the products on in this book.



## PROP 65

In compliance of California's Proposition 65, Coxreels will be applying warning labels to all applicable products with regard to chemicals known to the state of California to cause cancer or reproductive harm.

All reels will carry the following warning.

Parts and components will carry warning labels relative to the respective materials used.

For more information see <http://www.coxreels.com/prop65.html>



## INDUSTRY CATALOGS



## PRODUCT CATALOGS



100 years  
**Coxreels**  
 USA made since 1923

### CORPORATE HEADQUARTERS:

Tempe, Arizona USA  
 P: 480.820.6396 F: 480.820.5132  
 Toll Free: 800.COX.REEL  
[www.coxreels.com](http://www.coxreels.com) [info@coxreels.com](mailto:info@coxreels.com)

### INTERNATIONAL:

EUROPE / MIDDLE EAST / AFRICA  
 P: +44 (0) 1536 464 990  
 F: +44 (0) 1536 464 999  
[www.crireels.com](http://www.crireels.com) [sales@cireels.com](mailto:sales@cireels.com)

