

# SPRING DRIVEN WELDING HOSE REELS

# EZ-P-W & EZ-SHW SERIES

1/4" - 1/2" I.D.

**COXREELS® EZ-P-W and EZ-SHW Series** spring driven "Welding" hose reels are the ideal solution for managing bulky twin line welding hose. The P-W Series, like the EZ-P Series, is more compact in size and shares the reputation for long lasting performance. The EZ-SHW Series has a larger chassis and frame to accommodate longer lengths of welding hose and Coxreels' original Super Hub dual axle support system for increased stability during operation, less vibration and greater structural integrity.



## EZ-P-W & EZ-SHW SERIES

Do not exceed listed hose O.D. to obtain maximum length.

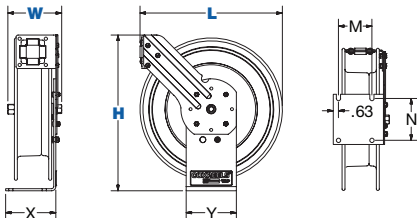
HOSE					LESS HOSE		SIZE INDEX
MODEL	I.D.	FT.	PSI	APRX. LBS.	MODEL	APRX. LBS.	
<b>OXYGEN-ACETYLENE</b> Hose supplied on reel is twin-siemese type meeting R.M.A. and C.G.A. type V.D. grade R specifications. Use of other types of hose is not recommended.							
EZ-P-W-125	1/4"	25	200	46	EZ-P-WL-125 <sup>†</sup>	39	1
EZ-SHW-150	1/4"	50	200	64	EZ-SHWL-N-150 <sup>†</sup>	52	2
EZ-SHW-175	1/4"	75	200	80	EZ-SHWL-N-175 <sup>†</sup>	63	3
EZ-SHW-1100	1/4"	100	200	84	EZ-SHWL-N-1100	62	3
<b>OTHER FUELS</b> Hose supplied on reel is twin-siemese type grade "T." Grade "T" reels and hoses are used for a wide variety of gases, such as MAPP, propane, natural and fuel.							
EZ-P-WT-125	1/4"	25	200	46	EZ-P-WTL-125 <sup>†</sup>	39	1
EZ-SHW-150	1/4"	50	200	64	EZ-SHWTL-N-150 <sup>†</sup>	52	2
EZ-SHW-175	1/4"	75	200	80	EZ-SHWTL-N-175 <sup>†</sup>	63	3
EZ-SHW-1100	1/4"	100	200	84	EZ-SHWTL-N-1100	62	3

## REEL DIMENSIONS

Technical Data Sheets Available On Website

SIZE INDEX	W	H	L	X	Y	M	N
1	8 1/2"	18 5/8"	17"	6"	6"	4"	5"
2	10 1/4"	21 1/4"	19 1/2"	6"	6"	4"	5"
3	10 1/4"	25 1/2"	24"	6"	6"	4"	5"

Overall Dimensions Base Mounting Pattern



## EZ-P-W & EZ-SHW SERIES :: REEL SPECIFICATIONS

### SWIVEL

- External fluid path with 90° full-flow dual ported brass swivel offering both connections from the same side of the reel
- Swivel lock bracket ensures maximum safety
- Swivel Seals: VITON®

### DESIGN & STRUCTURE

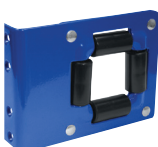
- Designed for Oxy-Acetylene or "T" grade welding hose
- Single pedestal reel with space saving design facilitates workplace organization
- Guide arm adjusts to wall, floor, & overhead positions
- Solid, one piece, heavy gauge 1/4" steel base & support post for maximum stability
- 1" solid steel axle & lubricated precision bearings for smooth rotation
- Coxreels' exclusive Super Hub™ dual axle support system on models with size index #2 & #3

### EZ-COIL RETRACTION

- OUR PATENTED SAFETY SYSTEM THAT RETRACTS UP TO 80% SLOWER THAN CONVENTIONAL SPRING DRIVEN REELS
- Enclosed factory tuned & matched cartridge-style spring motor
- Non corrosive, stainless steel spring, pawl, & zinc plated ratchet
- Multi-position, non-sparking lock ratchet mechanism secures hose at desired length

## TOP REQUESTED UPGRADES & ACCESSORIES

SEE PAGE 17 FOR ADDITIONAL ACCESSORIES



### UPGRADE TO SOLID ROLLERS

Heavy duty machined from solid plastic rollers. Only for T Series models 3/8" and 1/2".



WARNING: Cancer and reproductive Harm – See page 19 for more information – www.P65Warning.ca.gov

