

HOSE, CORD & CABLE REELS

SERVICE TRUCKS

COXREELS SINCE 1923



INDUSTRY CATALOG

SERVICE TRUCK REELS



IT'S NOT JUST A LABEL,

IT'S A BADGE OF HONOR

Hose, cord, and cable reels are essential components on service trucks, mechanic trucks, lube trucks, and skids. Reels are the preferred choice for managing hoses or neatly and conveniently storing them.

The Recognized Industry Leader

Coxreels is wholesale only since 1923. Our product is made to high standards, supplying industrial grade product to distributors and OEMs worldwide. We are recognized as the leader in the reeling industry. We have been providing the most complete and diverse line of hose, cord, and cable reels for 10 decades!

The Most Complete Line of Utility/Service Reels in the Market

Upgrade your shop floor or service vehicle with Coxreels heavy duty industrial grade hose, cord, and cable reels. Built for heavy use, indoor and outdoor applications, our hose, cord, and cable reels offer flexible mounting options and have designs that ease installation.

Proven reeling solutions to service vehicle needs!

We have reels for any conceivable application. The common applications we have identified on service trucks, mechanic trucks, lube trucks, enclosed lube trucks, lube skids, fuel trucks, water trucks, welder trucks and more include, but are not limited to:

- Air service reels for service vehicles featuring air compressors
- Antifreeze/coolant reels for service vehicles with coolant product delivery capacities
- Water discharge reels for service vehicles featuring water tanks
- Oil product delivery reels for service vehicles featuring oil product tanks
- Waste oil dispensing reels for service vehicles featuring waste oil tanks
- Grease delivery reels for service vehicles featuring grease, heavy hydraulics product tanks
- Pressure washing reels for service vehicles with pressure washing capabilities
- Fuel dispensing reels for service vehicles featuring fuel tanks
- Welding hose reels for service vehicles with oxy-acetylene tanks
- Welding cable reels for service vehicles featuring welders.

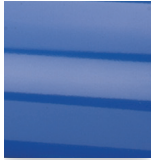
Our versatile and wide reel selection handles various capacities and comes in different sizes to suit any service vehicle requirement. Our standard reeling devices suggested in this catalog are already specified to meet the needs of the utility and service markets. Coxreels also has the engineering power to design and build custom reels, so please consult the factory if you cannot locate a reel that will work with your equipment, we will be happy to assist you with a solution.

VALUE THE DIFFERENCE...

Make COXREELS your reel choice!

PROFESSIONAL GRADE FEATURES

A HIGHER LEVEL OF STANDARDS



CPC™ POWDER COAT
Our blue powder coat finish is long lasting, chip resistant & rust inhibiting



BRASS SWIVEL
External fluid path, machined from solid brass, full flow, swivel for simple seal maintenance



STEEL AXLE
1" solid steel axle & lubricated bearings for extra strength & durability. Not a hollow tube & no fluid travels through it



STEEL CONSTRUCTION
High-Quality steel construction provides superior strength and durability for heavy-duty applications in commercial and industrial settings



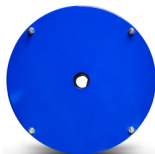
COMPONENT COVER
External CPC powder coated steel components cover for simple slip ring routine maintenance



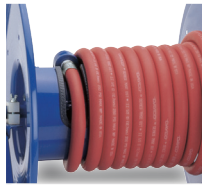
EZ-COIL® SERIES
A patented safety system that retracts up to 80% slower than conventional reels



CNC SPUN DISCS
All steel rolled edges & ribbed discs for added safety, strength & durability



CARTRIDGE MOTOR
Enclosed factory tuned & matched cartridge style motor for safe & easy replacement



LOW PROFILE RISER
Low profile riser with open drum slot allows for smooth even hose wraps that will not pinch or bind your hose. **NO HUMP!**



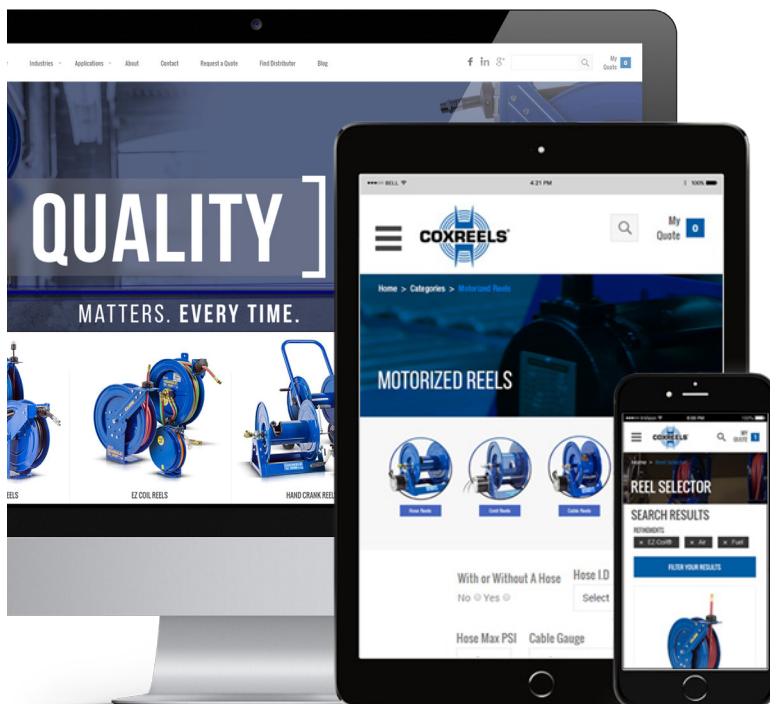
ALL WELDED STEEL "A" FRAME
All welded steel "A" frame for strength & durability. **NOT BOLTED!**



2 YEAR WARRANTY
Coxreels proudly stands behind our reels as they are built to last!



USA MADE, QUALITY & SUPPORT
We take great pride in designing, building & supplying the world's finest reels made right here in the U.S.A.



VISIT US ONLINE

Coxreels is committed to providing our customers with the ultimate online experience as they navigate through the most complete and diverse line of hose, cord, and cable reels.

We hope that you enjoy the fresh look and feel of our updated website and find that this portal serves as a valuable resource for you!

FOLLOW US



www.coxreels.com • 1.800.COX.REEL **SERVICE TRUCKS**

1/4" - 1/2" I.D.

P SERIES

PERFORMANCE HOSE REELS



COXREELS® P Series "Performance" spring driven hose reels have a long history of dependability and trouble free performance. Their compact space-saving size and heavy duty construction make them highly versatile and virtually indestructible. Time-tested proven components, superior design and craftsmanship have contributed to it's worldwide reputation as the most trusted hose reel.

P SERIES

Do not exceed listed hose O.D. to obtain maximum length.

HOSE						LESS HOSE		SIZE INDEX	
MODEL	I.D.	O.D.	FT.	PSI	APRX. LBS.	MODEL	APRX. LBS.		
LOW PRESSURE						Models with hose are for air water service with a maximum temperature 150°F. Models less hose can be used for air, water or oil.			
P-LP-125	1/4"	1/2"	25	300	27	EZ-P-LP-125	P-LPL-125	24	1
P-LP-150	1/4"	1/2"	50	300	40	EZ-P-LP-150	P-LPL-150	35	3
P-LP-325	3/8"	5/8"	25	300	28	EZ-P-LP-325	P-LPL-325	25	2
P-LP-350	3/8"	5/8"	50	300	43	EZ-P-LP-350	P-LPL-350	36	3
P-LP-425	1/2"	3/4"	25	300	44	-	P-LPL-425	39	4
P-LP-450	1/2"	3/4"	50	300	48	EZ-P-LP-450	P-LPL-450	43	4
MEDIUM PRESSURE						Reels are furnished with standard one wire braid hose suitable for air, water or oil applications. Hose exceeds SAE R1 specifications. Maximum Temperature 212°F (if used with water, synthetic fluids 135°F max.)			
P-MP-320	3/8"	1 1/16"	20	3,000	46	-	P-MPL-320	41	4
P-MP-325	3/8"	1 1/16"	25	3,000	49	-	P-MPL-325	42	4
P-MP-420	1/2"	1 3/16"	20	2,500	47	-	P-MPL-420	41	4
P-MP-425	1/2"	1 3/16"	25	2,500	49	EZ-P-MP-425	P-MPL-425	42	4
HIGH PRESSURE						Reels are furnished standard with S.A.E. 100R16 #1 or #2 wire braid hose suitable for grease and hydraulic oil applications. Maximum Temperature 212°F. (if used with water, synthetic fluids 135°F max.)			
P-HP-120	1/4"	9/16"	20	5,000	46	-	P-HPL-120	41	4
P-HP-125	1/4"	9/16"	25	5,000	48	EZ-P-HP-125	P-HPL-125	42	4
P-HP-130	1/4"	9/16"	30	5,000	50	-	P-HPL-130	43	4
P-HP-320	3/8"	1 1/16"	20	4,000	47	-	P-HPL-320	41	4
P-HP-325	3/8"	1 1/16"	25	4,000	49	EZ-P-HP-325	P-HPL-325	42	4
P-HP-330	3/8"	1 1/16"	30	4,000	51	-	P-HPL-330	43	4

To order EZ-Coil® equipped models less hose, please add prefix "EZ-"

P SERIES:: REEL SPECIFICATIONS

SWIVEL

- External fluid path with machined from solid brass 90° full-flow NPT swivel inlet (Zinc plated steel swivel on HP models)
- Swivel Seals: NITRILE

DESIGN & STRUCTURE

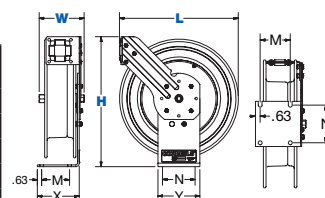
- Sturdy single pedestal reel with space saving design facilitates workplace organization
- Guide arm adjusts to wall, floor, vehicle & overhead positions
- Solid one piece, heavy gauge 1/4" steel base & support post for maximum stability
- 1" solid steel axle & lubricated precision bearings for smooth rotation
- Controlled retraction speed up to 80% slower on EZ-COIL models
- Enclosed factory tuned & matched cartridge-style spring motor
- Non-corrosive stainless steel spring, pawl & zinc plated ratchet
- Multi-position lock ratchet mechanism secures hose at desired length

REEL DIMENSIONS

Technical Data Sheets Available On Website

SIZE INDEX	W	H	L	X	Y	M	N
1	57/8"	147/8"	131/2"	5"	6"	3"	5"
2	61/2"	147/8"	131/2"	5"	6"	3"	5"
3	63/4"	185/8"	171/8"	6"	6"	4"	5"
4	7"	185/8"	171/8"	6"	6"	4"	5"

Overall Dimensions Base Mounting Pattern



WARNING: Cancer and reproductive Harm – See www.P65Warning.ca.gov for more information

TOP REQUESTED UPGRADES & ACCESSORIES

SEE PAGE 17 FOR ADDITIONAL ACCESSORIES



ORDER EZ-COIL® MODELS

EZ-Coil® is a patented controlled retraction technology offered exclusively on Coxreels' Safety Series reels. It retracts up to 80% slower than conventional reels, resulting in workplace safety, protection from injury & costly property damage.

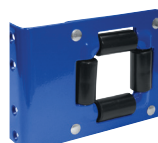
UPGRADE TO NITRILE OR RUBBER HOSE

NITRILE HOSE: Premium high quality, oil resistant, multi-purpose hose. The high tensile spiral synthetic yarn reinforcement provides excellent kink resistance. Temperature range: -20° F to +212° F.

SYNTHETIC RUBBER HOSE: Versatile general purpose hose. The synthetic rubber tube and cover resists heat, sunlight, ozone, and weathering. Temperature range -40° F to +212° F

UPGRADE TO STAINLESS STEEL SWIVEL

Based on the upgraded medium pressure swivel, the stainless steel swivel is machined from solid 316 stainless steel and features increased wall thicknesses with upgraded seals and backup rings.



UPGRADE TO SOLID ROLLERS

Heavy duty machined from solid plastic rollers.

ADD AIR TOOL KIT

BEND RESTRICTOR: Designed to limit the degree of bending without compromising the integrity of the hose assembly while also preventing the hose-end from kinking, excessive wearing, and tearing. Available for low pressure models.

QUICK DISCONNECT: Quick disconnect couplings tread onto end of hose fitting to provide fast, leak-proof connections for low pressure hose lines.

ADD BEND RESTRICTOR

Designed to limit the degree of bending without compromising the integrity of the hose assembly while also preventing the hose-end from kinking, excessive wearing, and tearing. Available for low pressure models.

COXREELS® SH Series "Super Hub™" spring driven hose reels, like the P Series, have a long history of dependable performance. The larger chassis and frame accommodate longer lengths and larger diameters of hose. Coxreels' original Super Hub™ dual axle support system increases the stability during operation, reduces vibration and strengthens the structural integrity of the reel.

SH, MP & HP SERIES

Do not exceed listed hose O.D. to obtain maximum length.

HOSE							LESS HOSE		SIZE INDEX
MODEL	I.D.	O.D.	FT.	PSI	APRX. LBS.	<i>EZ-COIL</i> MODELS	MODEL	APRX. LBS.	
LOW PRESSURE		Models with hose are for air water service with a maximum temperature 150°F. Models less hose can be used for air, water or oil.							
SH-N-350	3/8"	5/8"	50	300	50	EZ-SH-350	SHL-N-350	44	1
SH-N-375	3/8"	5/8"	75	300	68	EZ-SH-375	SHL-N-375	59	2
SH-N-3100	3/8"	5/8"	100	300	71	EZ-SH-3100	SHL-N-3100	60	2
SH-N-450	1/2"	3/4"	50	300	54	EZ-SH-450	SHL-N-450	46	1
SH-N-475	1/2"	3/4"	75	300	68	EZ-SH-475	SHL-N-475	57	3
SH-N-4100	1/2"	3/4"	100	300	81	EZ-SH-4100	SHL-N-4100	66	3
SH-N-525	3/4"	1 1/16"	25	300	52	EZ-SH-525	SHL-N-525	45	4
SH-N-550	3/4"	1 1/16"	50	300	69	EZ-SH-550	SHL-N-550	56	5
MEDIUM PRESSURE		Reels are furnished with standard one wire braid hose suitable for air, water or oil applications. Hose exceeds SAE R1 specifications. Maximum Temperature 250°F.							
MP-N-350	3/8"	1 1/16"	50	3,000	65	EZ-MP-350	MPL-N-350	53	1
MP-N-450	1/2"	1 3/16"	50	2,500	67	EZ-MP-450	MPL-N-450	53	6
MP-N-525	3/4"	1 1/16"	25	1,500	61	-	MPL-N-525	51	4
MP-N-535	3/4"	1 1/16"	35	1,500	68	-	MPL-N-535	54	4
HIGH PRESSURE		Reels are furnished standard with S.A.E. 100R16 #1 or #2 wire braid hose suitable for grease and hydraulic oil applications. Maximum Temperature 250°F.							
HP-N-150	1/4"	9/16"	50	5,000	64	EZ-HP-150	HPL-N-150	53	6
HP-N-350	3/8"	1 1/16"	50	4,000	65	EZ-HP-350	HPL-N-350	53	7

To order EZ-Coil® equipped models less hose, please add prefix "EZ-"

REEL DIMENSIONS

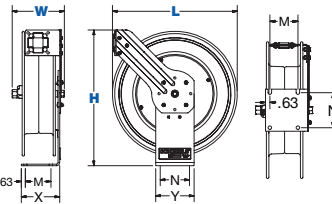
Technical Data Sheets Available On Website

SIZE INDEX	W	H	L	X	Y	M	N
1	8 1/4"	21 1/4"	19 1/2"	6"	6"	4"	5"
2	8 1/4"	25 1/2"	24"	6"	6"	4"	5"
3	8 3/4"	25 1/2"	24"	6"	6"	4"	5"
4	9 3/4"	21 1/4"	19 1/2"	6"	6"	4"	5"
5	9 3/4"	25 1/2"	24"	6"	6"	4"	5"
6	8 3/4"	21 1/4"	19 1/2"	6"	6"	4"	5"
7	9 1/4"	21 1/4"	19 1/2"	6"	6"	4"	5"

Overall Dimensions

Base

Mounting Pattern



Double axle support with Super Hub™

SH, MP & HP SERIES :: REEL SPECIFICATIONS**SWIVEL**

- External fluid path with machined from solid brass 90° full-flow NPT swivel inlet (Zinc plated steel swivel on HP models)
- Swivel Seals: NITRILE

DESIGN & STRUCTURE

- Sturdy single pedestal reel features Coxreels' exclusive Super Hub™ dual axle support system
- Guide arm adjusts to wall, floor, vehicle & overhead positions
- Solid one piece, heavy gauge 1/4" steel base & support post for maximum stability
- 1" solid steel axle & lubricated precision bearings for smooth rotation • Controlled retraction speed up to 80% slower on EZ-Coil models
- Enclosed factory tuned & matched cartridge-style spring motor
- Non-corrosive stainless steel spring, pawl & zinc plated ratchet
- Multi-position lock ratchet mechanism secures hose at desired length



WARNING: Cancer and reproductive Harm – See www.P65Warning.ca.gov for more information

TOP REQUESTED UPGRADES & ACCESSORIES

SEE PAGE 17 FOR ADDITIONAL ACCESSORIES

**ORDER EZ-COIL® MODELS**

EZ-Coil® is a patented controlled retraction technology offered exclusively on Coxreels' Safety Series reels. It retracts up to 80% slower than conventional reels, resulting in workplace safety, protection from injury & costly property damage.

UPGRADE TO NITRILE OR RUBBER HOSE

NITRILE HOSE: Premium high quality, oil resistant, multi-purpose hose. The high tensile spiral synthetic yarn reinforcement provides excellent kink resistance. Temperature range: -20° F to +212° F.

SYNTHETIC RUBBER HOSE: Versatile general purpose hose. The synthetic rubber tube and cover resists heat, sunlight, ozone, and weathering. Temperature range -40° F to +212° F.

UPGRADE TO STAINLESS STEEL SWIVEL

Based on the upgraded medium pressure swivel, the stainless steel swivel is machined from solid 316 stainless steel and features increased wall thicknesses with upgraded seals and backup rings.

**UPGRADE TO SOLID ROLLERS**

Heavy duty machined from solid plastic rollers.

ADD AIR TOOL KIT

BEND RESTRICTOR: Designed to limit the degree of bending without compromising the integrity of the hose assembly while also preventing the hose-end from kinking, excessive wearing, and tearing. Available for low pressure models.

QUICK DISCONNECT: Quick disconnect couplings tread onto end of hose fitting to provide fast, leak-proof connections for low pressure hose lines.

ADD BEND RESTRICTOR

Designed to limit the degree of bending without compromising the integrity of the hose assembly while also preventing the hose-end from kinking, excessive wearing, and tearing. Available for low pressure models.





Triple axle support with a full frame & Super Hub™

COXREELS® T Series "Truck Mount" spring driven hose reels are the toughest hose reels in the spring driven line. The extra large chassis with dual pedestal-style arms and Coxreels' Super Hub™ provides triple axle support while reducing vibration and strengthening the structural integrity of the reel. Making it perfect for on and off-road applications that demand reliability in the most abusive and demanding environments.

T SERIES

Do not exceed listed hose O.D. to obtain maximum length.

HOSE							LESS HOSE		SIZE INDEX
MODEL	I.D.	O.D.	FT.	PSI	APRX. LBS.	EZ-COIL MODELS	MODEL	APRX. LBS.	
LOW PRESSURE		Models with hose are for air water service with a maximum temperature 150°F. Models less hose can be used for air, water or oil.							
TSH-N-350	3/8"	5/8"	50	300	61	EZ-TSH-350	TSHL-N-350	55	1
TSH-N-375	3/8"	5/8"	75	300	82	EZ-TSH-375	TSHL-N-375	73	2
TSH-N-3100	3/8"	5/8"	100	300	85	EZ-TSH-3100	TSHL-N-3100	74	2
TSH-N-450	1/2"	3/4"	50	300	63	EZ-TSH-450	TSHL-N-450	55	1
TSH-N-475	1/2"	3/4"	75	300	82	EZ-TSH-475	TSHL-N-475	71	2
TSH-N-4100	1/2"	3/4"	100	300	95	EZ-TSH-4100	TSHL-N-4100	80	2
TSH-N-550	3/4"	1 1/16"	50	300	83	EZ-TSH-550	TSHL-N-550	70	3
TSH-N-575	3/4"	1 1/16"	75	300	93	-	TSHL-N-575	73	4
TSH-N-650	1"	1 1/2"	50	300	98	-	TSHL-N-650	77	4
MEDIUM PRESSURE		Reels are furnished with standard one wire braid hose suitable for air, water or oil applications. Hose exceeds SAE R1 specifications. Maximum Temperature 250°F.							
TMP-N-350	3/8"	1 1/16"	50	3,000	74	EZ-TMP-350	TMPL-N-350	61	1
TMP-N-375	3/8"	1 1/16"	75	3,000	99	EZ-TMP-375	TMPL-N-375	80	2
TMP-N-3100	3/8"	1 1/16"	100	3,000	106	-	TMPL-N-3100	82	2
TMP-N-450	1/2"	1 3/16"	50	2,500	77	EZ-TMP-450	TMPL-N-450	64	1
TMP-N-475	1/2"	1 3/16"	75	2,500	100	EZ-TMP-475	TMPL-N-475	80	2
TMP-N-4100	1/2"	1 3/16"	100	2,500	106	-	TMPL-N-4100	80	2
TMP-N-550	3/4"	1 1/16"	50	1,500	94	EZ-TMP-550	TMPL-N-550	74	3
TMP-N-575	3/4"	1 1/16"	75	1,500	100	-	TMPL-N-575	77	5
TMP-N-650	1"	1 3/8"	50	1,250	116	-	TMPL-N-650	81	5
HIGH PRESSURE		Reels are furnished standard with S.A.E. 100R16 #1 or #2 wire braid hose suitable for grease and hydraulic oil applications. Maximum Temperature 250°F.							
THP-N-150	1/4"	9/16"	50	5,000	74	EZ-THP-150	THPL-N-150	62	1
THP-N-175	1/4"	9/16"	75	5,000	88	EZ-THP-175	THPL-N-175	71	2
THP-N-1100	1/4"	9/16"	100	5,000	104	EZ-THP-1100	THPL-N-1100	82	2
THP-N-350	3/8"	1 1/16"	50	4,000	78	EZ-THP-350	THPL-N-350	66	1
THP-N-375	3/8"	1 1/16"	75	4,000	98	EZ-THP-375	THPL-N-375	80	2

To order EZ-Coil® equipped models less hose, please add prefix "EZ-"

REEL DIMENSIONS

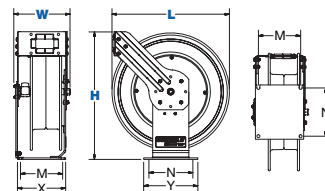
Technical Data Sheets Available On Website

SIZE INDEX	W	H	L	X	Y	M	N
1	9 3/8"	21 1/4"	19 1/2"	8"	9"	7"	8"
2	9 3/8"	25 1/2"	24"	8"	9"	7"	8"
3	9 7/8"	25 1/2"	24"	8"	9"	7"	8"
4	12"	25 1/2"	24"	8"	9"	7"	8"
5	12 1/2"	25 1/2"	24"	8"	9"	7"	8"

Overall Dimensions

Base

Mounting Pattern

**T SERIES: REEL SPECIFICATIONS****SWIVEL**

- External fluid path with machined from solid brass 90° full-flow NPT swivel inlet (Zinc plated steel swivel on HP models)
- Swivel Seals: NITRILE
- Electroless nickel plated steel swivel on 1" models

DESIGN & STRUCTURE

- Sturdy dual pedestal reel features Coxreels' exclusive Super Hub™ triple axle support system
- Guide arm adjusts to wall, floor, vehicle & overhead positions
- Stainless Steel rollers on 3/4" & 1" models
- Solid one piece, heavy gauge 1/4" steel base & support posts for maximum strength
- 1" solid steel axle & lubricated precision bearings for smooth rotation
- Controlled retraction speed up to 80% slower on EZ-COIL models
- Enclosed factory tuned & matched cartridge-style spring motor
- Non-corrosive stainless steel spring, pawl & zinc plated ratchet
- Multi-position lock ratchet mechanism secures hose at desired length



WARNING: Cancer and reproductive Harm – See www.P65Warning.ca.gov for more information

TOP REQUESTED UPGRADES & ACCESSORIES

SEE PAGE 17 FOR ADDITIONAL ACCESSORIES

**ORDER EZ-COIL® MODELS**

EZ-Coil® is a patented controlled retraction technology offered exclusively on Coxreels' Safety Series reels. It retracts up to 80% slower than conventional reels, resulting in workplace safety, protection from injury & costly property damage.

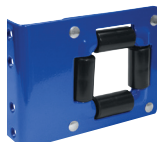
UPGRADE TO NITRILE OR RUBBER HOSE

NITRILE HOSE: Premium high quality, oil resistant, multi-purpose hose. The high tensile spiral synthetic yarn reinforcement provides excellent kink resistance. Temperature range: -20° F to +212° F.

SYNTHETIC RUBBER HOSE: Versatile general purpose hose. The synthetic rubber tube and cover resists heat, sunlight, ozone, and weathering. Temperature range -40° F to +212° F

UPGRADE TO STAINLESS STEEL SWIVEL

Based on the upgraded medium pressure swivel, the stainless steel swivel is machined from solid 316 stainless steel and features increased wall thicknesses with upgraded seals and backup rings.

**UPGRADE TO SOLID ROLLERS**

Heavy duty machined from solid plastic rollers. Only for T Series models 3/8" and 1/2".

ADD AIR TOOL KIT

BEND RESTRICTOR: Designed to limit the degree of bending without compromising the integrity of the hose assembly while also preventing the hose-end from kinking, excessive wearing, and tearing. Available for low pressure models.

QUICK DISCONNECT: Quick disconnect couplings tread onto end of hose fitting to provide fast, leak-proof connections for low pressure hose lines.

ADD BEND RESTRICTOR

Designed to limit the degree of bending without compromising the integrity of the hose assembly while also preventing the hose-end from kinking, excessive wearing, and tearing. Available for low pressure models

COXREELS® P-W and SHW Series spring driven "Welding" hose reels are the ideal solution for managing bulky twin line welding hose. The P-W Series, like the P Series, is more compact in size and shares the reputation for long lasting performance. The SHW Series has a larger chassis and frame to accommodate longer lengths of welding hose and Coxreels' original Super Hub dual axle support system for increased stability during operation, less vibration and greater structural integrity.

P-W & SHW SERIES

Do not exceed listed hose O.D. to obtain maximum length.

HOSE						LESS HOSE		SIZE INDEX
MODEL	I.D.	FT.	PSI	APRX. LBS.	EZ-COIL MODELS	MODEL	APRX. LBS.	
OXYGEN-ACETYLENE								
Hose supplied on reel is twin-siemese type meeting R.M.A. and C.G.A. type V.D. grade R specifications. Use of other types of hose is not recommended.								
P-W-125	1/4"	25	200	46	EZ-P-W-125	P-WL-125†	39	1
SHW-N-150	1/4"	50	200	64	EZ-SHW-150	SHWL-N-150†	52	2
SHW-N-175	1/4"	75	200	80	EZ-SHW-175	SHWL-N-175†	63	3
SHW-N-1100	1/4"	100	200	84	EZ-SHW-1100	SHWL-N-1100	62	3
OTHER FUELS								
Hose supplied on reel is twin-siemese type grade "T." Grade "T" reels and hoses are used for a wide variety of gases, such as MAPP, propane, natural and fuel.								
P-WT-125	1/4"	25	200	46	EZ-P-WT-125	P-WTL-125†	39	1
SHWT-N-150	1/4"	50	200	64	EZ-SHWT-150	SHWTL-N-150†	52	2
SHWT-N-175	1/4"	75	200	80	EZ-SHWT-175	SHWTL-N-175†	63	3
SHWT-N-1100	1/4"	100	200	84	EZ-SHWT-1100	SHWTL-N-1100	62	3

To order EZ-Coil® equipped models less hose, please add prefix "EZ-". Less hose models comes with inlet hose

REEL DIMENSIONS

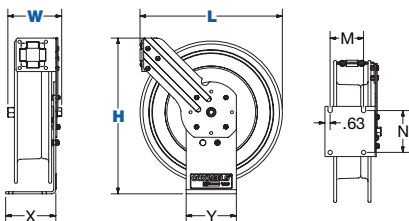
Technical Data Sheets Available On Website

SIZE INDEX	W	H	L	X	Y	M	N
1	8 1/2"	18 5/8"	17"	6"	6"	4"	5"
2	10 1/4"	21 1/4"	19 1/2"	6"	6"	4"	5"
3	10 1/4"	25 1/2"	24"	6"	6"	4"	5"

Overall Dimensions

Base

Mounting Pattern



P-W & SHW SERIES :: REEL SPECIFICATIONS

SWIVEL

- External fluid path with 90° full-flow dual ported brass swivel offering both connections from the same side of the reel
- Swivel lock bracket ensures maximum safety
- Swivel Seals: VITON®

DESIGN & STRUCTURE

- Designed for Oxy-Acetylene or "T" grade welding hose
- Single pedestal reel with space saving design facilitates workplace organization
- Guide arm adjusts to wall, floor & overhead positions
- Solid one piece, heavy gauge 1/4" steel base & support post for maximum stability
- 1" solid steel axle & lubricated precision bearings for smooth rotation
- Coxreels' exclusive Super Hub™ dual axle support system on models with size index #2 & #3
- Controlled retraction speed up to 80% slower on EZ-COIL models
- Enclosed factory tuned & matched cartridge-style spring motor
- Non corrosive stainless steel spring, pawl & zinc plated ratchet
- Multi-position non-sparking lock ratchet mechanism secures hose at desired length



WARNING: Cancer and reproductive Harm – See www.P65Warning.ca.gov for more information

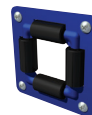
TOP REQUESTED UPGRADES & ACCESSORIES

SEE PAGE 17 FOR ADDITIONAL ACCESSORIES



ORDER EZ-COIL® MODELS

EZ-Coil® is a patented controlled retraction technology offered exclusively on Coxreels' Safety Series reels. It retracts up to 80% slower than conventional reels, resulting in workplace safety, protection from injury & costly property damage.



4-WAY ROLLER BRACKET

Heavy gauge steel, powder coated Coxreels blue (4RB). Weight: 1 lbs.

#6GA - #2/0GA

P-WC SERIES SPRING DRIVEN WELDING CABLE REELS



COXREELS® P-WC Series spring driven "Welding Cable" reels protect and extend the life of your welding cable by neatly and conveniently storing it on a 25, 35 or 50 foot self-retracting welding cable reel. They are the solution for keeping your work area safe, organized and efficient.

P-WC SERIES

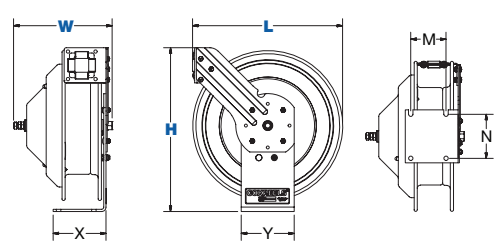
Caution: When using reel for extended periods of time unwind all cable to prevent heat build up.

CABLE						LESS CABLE		SIZE INDEX
MODEL	FT.	TYPE	VOLT.	AMPS.	APRX. LBS.	MODEL	APRX. LBS.	
WELDING CABLE REEL		Protect & extend the life of your welding cable while keeping your work area and vehicles clean & organized.						
P-WC13-3506	35	6GA	600	75	31	P-WC13L-3506	26	1
P-WC13-5006	50	6GA	600	75	35	P-WC13L-5006	28	1
P-WC13-3504	35	4GA	600	150	34	P-WC13L-3504	26	1
P-WC13-5004	50	4GA	600	150	39	P-WC13L-5004	28	1
P-WC13-3502	35	2GA	600	225	36	P-WC13L-3502	26	1
P-WC17-5002	50	2GA	600	225	56	P-WC17L-5002	42	2
P-WC13-2501	25	1GA	600	300	35	P-WC13L-2501	26	1
P-WC17-5001	50	1GA	600	300	60	P-WC17L-5001	42	2
P-WC13-2510	25	1/0	600	350	37	P-WC13L-2510	26	1
P-WC17-5010	50	1/0	600	350	64	P-WC17L-5010	42	2
P-WC17-3520	35	2/0	600	450	60	P-WC17L-3520	42	2
P-WC17-5020	50	2/0	600	450	68	P-WC17L-5020	42	2

REEL DIMENSIONS

Technical Data Sheets Available On Website

SIZE INDEX	W	H	L	X	Y	M	N
1	8½"	14½"	13¾"	5"	6"	3"	5"
2	11"	18½"	17¼"	6"	6"	4"	5"
Overall Dimensions			Base		Mounting Pattern		



P-WC SERIES :: REEL SPECIFICATIONS

SLIP RING

- External, easily accessible heavy gauge CPC™ powder coated steel components cover for simple slip ring routine maintenance
- Electrical current runs through a 450 AMP rated slip ring

DESIGN & STRUCTURE

- Designed for electrode & grounding lead applications (each lead requires an individual reel)
- Single pedestal reel with space saving design facilitates workplace organization
- Welding cable clamp available (see below)
- Guide arm adjusts to wall, floor, vehicle & overhead positions
- Solid one piece, heavy gauge ¼" steel base & support post for maximum stability
- 1" solid steel axle & lubricated precision bearings for smooth rotation
- Enclosed factory tuned & matched cartridge-style spring motor
- Non corrosive stainless steel spring, pawl & zinc plated ratchet
- Multi-position lock ratchet mechanism secures cable at desired length



WARNING: Cancer and reproductive Harm – See www.P65Warning.ca.gov for more information

TOP REQUESTED UPGRADES & ACCESSORIES

SEE PAGE 17 FOR ADDITIONAL ACCESSORIES



ADD ELECTRODE HOLDER

Electrode holder features a six-position jaw pattern & has fully insulated, protected springs. # 7685



ADD GROUNDING CLAMP

300 Amp with solid copper jaws & fits cable ballpoint thru 3/0. #7688



COXREELS® 1125WCL Series hand crank or motorized “Welding Cable” reels are great for grounding cable. Save time and effort as you extend the life of your expensive welding cable investment. All electrical components are set inside the drum offering a special narrow width. A stacking bracket is available to create a lead/ground combination in one organized unit.



1125WCL SERIES

MODEL	LESS CABLE					APRX. LBS.	SIZE INDEX
	CABLE TYPE & CAPACITY						
	#2	#1	#1/0	#2/0			
1125WCL-6-X	300'	250'	200'	150'	38	2	
1125WCL-12-X	600'	500'	400'	300'	45	3	



SUFFIX OPTIONS FOR YOUR REEL

Featuring a direct gear drive, the 1125WCL Series drive system is more dependable and maintenance free than a chain and sprocket. A solid steel ring gear is directly welded to the side of the disc for added rigidity and strength. Choose from several motor options shown in the table below. Select from the options below to substitute the “X” with.

SEE PAGE 11 FOR ADDITIONAL MOTOR ACCESSORIES

SUFFIX	TYPE	DESCRIPTION	ADD ON APRX. LBS
A	AIR - 4 VANE	ALUMINIUM BODY AIR MOTOR	8
C	FRONT HAND CRANK	BEVEL GEARED CRANK	3
ED	12 V DC, 1/2 HP EXP.	EXPLOSION PROOF, REVERSABLE	26
EB	24 V DC, 1/2 HP EXP.	EXPLOSION PROOF, REVERSABLE	26
EA	115 V AC, 1/2 HP EXP.	REVERSABLE AC RECTIFIED	26
H	HYDRAULIC	END PORTED 9/16-18 UNF	6

REEL DIMENSIONS

Technical Data Sheets Available On Website

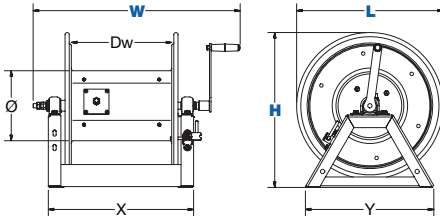
SIZE INDEX	W		H	L	X	Y		Ø	Dw
	CRANK	ELEC.				CRANK	ELEC.		
1	18"	-	13"	-	12"	8"	6"	5-1/2"	6-1/2"
2	18 3/4"	19 7/8"	17 1/4"	18 1/2"	19 1/8"	17 1/2"	11 3/8"	15 3/8"	16"
3	24 3/4"	25 7/8"	23 1/4"	18 1/2"	19 1/8"	17 1/2"	17 3/8"	15 3/8"	16"

Overall Dimensions

Base

Drum

1125WCL Series



WARNING: Cancer and reproductive Harm – See www.P65Warning.ca.gov for more information

TOP REQUESTED UPGRADES & ACCESSORIES

SEE PAGE 17 FOR ADDITIONAL ACCESSORIES



ADD 4-WAY ROLLERS

4-way enclosed pinch-proof stainless steel rollers are 1 in diameter supported by powder coated steel brackets. Weight: Add 10 lbs. to reel weight. Only for 1125WCL Series







ADD PINLOCK TO MOTORIZED MODELS

The spring-loaded lock pin assembly is designed to lock & secure the reel, even in mobile conditions over rough terrain. Only for 1125WCL Series.

COXREELS® PC Series spring driven "Power Cord" reels are heavy duty, industrial grade power sources. They replace tangled extension cords and self-retract to increase safety, productivity and efficiency. Modeled after the P and SH Series, the PC Series are designed for long-lasting, trouble-free performance even under the most demanding conditions.

PC SERIES

CORD									SIZE INDEX
MODEL	ACCESSORY	AWG / NO COND.	CORD FT.	TYPE	VOLTS	AMPS	APRX. LBS.	EZ-COIL MODELS	
FOR INDOOR USE ONLY!									
All models rated at 115 volts, 60 hz single phase only.									
PC13-3516-A†		16 / 3	35	SJO	115	13	34	-	1
PC13-5016-A†		16 / 3	50	SJO	115	13	36	EZ-PC13-5016-A	1
PC24-0016-A		16 / 3	100	SJO	115	13	73	EZ-PC24-0016-A	4
PC13-3512-A†		12 / 3	35	SJO	115	20	37	-	1
PC13-5012-A†		12 / 3	50	SJO	115	20	40	EZ-PC13-5012-A	1
PC24-0012-A		12 / 3	100	SJO	115	20	81	EZ-PC24-0012-A	4
PC13-3512-B†		12 / 3	35	SJO	115	20	38	-	1
PC13-5012-B†		12 / 3	50	SJO	115	20	41	EZ-PC13-5012-B	1
PC24-0012-B		12 / 3	100	SJO	115	20	84	EZ-PC24-0012-B	4
PC13-3516-F†		16 / 3	35	SJO	115	13	36	-	1
PC13-5016-F†		16 / 3	50	SJO	115	13	38	EZ-PC13-5016-F	1
PC24-0016-F		16 / 3	100	SJO	115	13	73	EZ-PC24-0016-F	4
PC13-3512-F†		12 / 3	35	SJO	115	20	39	-	1
PC13-5012-F†		12 / 3	50	SJO	115	20	42	EZ-PC13-5012-F	1
PC24-0012-F		12 / 3	100	SJO	115	20	83	EZ-PC24-0012-F	4
PC24-0016-X	With Cord, Less Accessory	16 / 3	100**	SJO	115	13	71	EZ-PC24-0016-X	4
PC13-5012-X††		12 / 3	50**	SJO	115	20	40	EZ-PC13-5012-X	1
PC24-0012-X		12 / 3	100**	SJO	115	20	81	EZ-PC24-0012-X	4
PC17-3510-X††		10 / 3	35**	SO	115	30	62	-	2
PC17-5010-X††		10 / 3	50**	SO	115	30	67	-	2
PC13L-5016††	Less Cord, Less Accessory	16 / 3	50*	SJO	115	25	31	EZ-PC13L-5016	1
PC24L-0016		16 / 3	100*	SJO	115	25	62	EZ-PC24L-0016	4
PC13L-5012††		12 / 3	50*	SJO	115	25	29	EZ-PC13L-5012	1
PC24L-0012		12 / 3	100*	SJO	115	25	64	EZ-PC24L-0012	4
PC17L-5010††		10 / 3	-	-	115	35	49	-	2

*Consult factory with 4 conductor requirements. **When not using specified cord type capacity may vary.

REEL DIMENSIONS

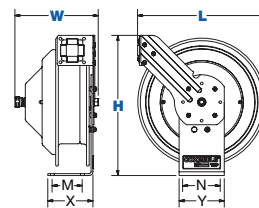
Technical Data Sheets Available On Website

SIZE INDEX	W	H	L	X	Y	M	N
1	8 1/2"	14 7/8"	13 1/2"	5"	6"	3"	5"
2	11"	18 5/8"	17"	6"	6"	4"	5"
3	10 1/8"	21"	19 1/2"	6"	6"	4"	5"
4	10 1/4"	25 1/2"	24"	6"	6"	4"	5"

Overall Dimensions

Base

Mounting Pattern

**PC SERIES™ REEL SPECIFICATIONS****SLIP RING**

- External heavy gauge CPC™ powder coated steel components cover for simple slip ring routine maintenance
- Electrical current runs through a 25AMP / 600V rated slip ring (35AMP on select models)
- Include 5' lead cable & grounding plug (except on less cord models)

DESIGN & STRUCTURE

- Single pedestal cord reel with space saving design facilitates workplace organization
- Guide arm adjusts to wall, floor & overhead positions
- Solid one piece, heavy gauge 1/4" steel base & support post for maximum stability
- Coxreels' exclusive Super Hub™ dual axle support system on models with size index #3 & #4
- 1" solid steel axle & lubricated precision bearings for smooth rotation
- Controlled retraction speed up to 80% slower on EZ-COIL models
- Enclosed factory tuned & matched cartridge-style spring motor
- Non-corrosive stainless steel spring, pawl & zinc plated ratchet
- Multi-position lock ratchet mechanism secures cord at desired length



WARNING: Cancer and reproductive Harm – See www.P65Warning.ca.gov for more information

TOP REQUESTED UPGRADES & ACCESSORIES

SEE PAGE 17 FOR ADDITIONAL ACCESSORIES

**ORDER EZ-COIL® MODELS**




EZ-Coil® is a patented controlled retraction technology offered exclusively on Coxreels' Safety Series reels. It retracts up to 80% slower than conventional reels, resulting in workplace safety, protection from injury & costly property damage.

**UPGRADE TO SOLID ROLLERS**

Heavy duty machined from solid plastic rollers.

COXREELS® PC Series spring driven "Power Cord" reels are heavy duty, industrial grade power sources. They replace tangled extension cords and self-retract to increase safety, productivity and efficiency. Modeled after the P and SH Series, the PC Series are designed for long-lasting, trouble-free performance even under the most demanding conditions.

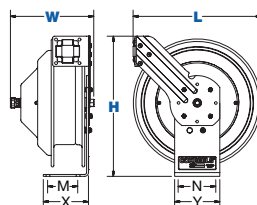
PC SERIES

CORD									SIZE INDEX
MODEL	ACCESSORY	AWG / NO COND.	CORD FT.	TYPE	VOLTS	AMPS	APRX. LBS.	EZ-COIL MODELS	
FOR INDOOR USE ONLY!									
All models rated at 115 volts, 60 hz single phase only.									
PC13-3516-C†	Fluorescent Tube Light - Shock Absorbing & Shatter Resistant†	16 / 3	35	SJTO	115	0.3	35	-	1
PC13-5016-C†		16 / 3	50	SJTO	115	0.3	37	EZ-PC13-5016-C	1
PC24-0016-C		16 / 3	100	SJTO	115	0.3	75	EZ-PC24-0016-C	4
PC13-3516-D†		Fluorescent Angle Light with Tool Tap Plug†	16 / 3	35	SJTO	115	13	35	-
PC13-5016-D†		16 / 3	50	SJTO	115	13	37	EZ-PC13-5016-D	1
PC24-0016-D		16 / 3	100	SJTO	115	13	73	EZ-PC24-0016-D	4
PC13-3516-E†		Incandescent Caged Drop Light with Tool Tap Plug†	16 / 3	35	SJTO	115	13	34	-
PC13-5016-E†		16 / 3	50	SJTO	115	13	36	EZ-PC13-5016-E	1
PC19-7516-E		16 / 3	75	SJTO	115	13	60	-	3
PC24-0016-E		16 / 3	100	SJTO	115	13	73	EZ-PC24-0016-E	4
PC-13-5016-H†	Industrial Duty LED Light	16 / 3	50	SJTO	115	.17	37	EZ-PC13-5016-H	1
PC-13-5016-K	Super-Bright LED Light with Tool Tap on Handle	16 / 3	50	SJTO	115	.17	37	EZ-PC13-5016-K	1
PC-13-5016-M	Compact Super-Bright LED Light	16 / 3	50	SJTO	115	.17	37	EZ-PC13-5016-M	1

REEL DIMENSIONS

Technical Data Sheets Available On Website

SIZE INDEX	W	H	L	X	Y	M	N
1	8 1/2"	14 7/8"	13 1/2"	5"	6"	3"	5"
2	11"	18 5/8"	17"	6"	6"	4"	5"
3	10 1/8"	21"	19 1/2"	6"	6"	4"	5"
4	10 1/4"	25 1/2"	24"	6"	6"	4"	5"
Overall Dimensions				Base		Mounting Pattern	



UL Listed †

V listed ††

PC SERIES :: REEL SPECIFICATIONS

SLIP RING

- External heavy gauge CPC™ powder coated steel components cover for simple slip ring routine maintenance
- Electrical current runs through a 25AMP / 600V rated slip ring (35AMP on select models)
- Include 5' lead cable & grounding plug (except on less cord models)

DESIGN & STRUCTURE

- Single pedestal cord reel with space saving design facilitates workplace organization
- Guide arm adjusts to wall, floor & overhead positions
- Solid one piece, heavy gauge 1/4" steel base & support post for maximum stability
- Coxreels' exclusive Super Hub™ dual axle support system on models with size index #3 & #4
- 1" solid steel axle & lubricated precision bearings for smooth rotation
- Controlled retraction speed up to 80% slower on EZ-COIL models
- Enclosed factory tuned & matched cartridge-style spring motor
- Non-corrosive stainless steel spring, pawl & zinc plated ratchet
- Multi-position lock ratchet mechanism secures cord at desired length



WARNING: Cancer and reproductive Harm – See www.P65Warning.ca.gov for more information

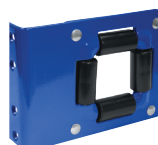
TOP REQUESTED UPGRADES & ACCESSORIES

SEE PAGE 17 FOR ADDITIONAL ACCESSORIES



ORDER EZ-COIL® MODELS

EZ-Coil® is a patented controlled retraction technology offered exclusively on Coxreels' Safety Series reels. It retracts up to 80% slower than conventional reels, resulting in workplace safety, protection from injury & costly property damage.



UPGRADE TO SOLID ROLLERS

Heavy duty machined from solid plastic rollers.

1/4" - 1/2" I.D.

MPD & TDMP SERIES

DUAL HYDRAULIC HOSE REELS

COXREELS® MPD and TDMP Series "Dual Hydraulic" hose reels have similar features to their related series, but have been redesigned to handle dual hydraulic applications. Spring driven retraction at 3,000 PSI to 50 feet.



SPRING DRIVEN DUAL HYDRAULIC SERIES

HOSE						LESS HOSE		SIZE INDEX
MODEL	I.D.	O.D.	FT.	PSI	APRX. LBS.	MODEL	APRX. LBS.	
MPD SERIES Medium pressure reels are furnished standard with dual-hydraulic hose banded together every 2-3 feet with power strip-type clamps. Maximum temperature 250° F.								
-	-	-	-	-	-	MPDL-N-150	62	1
MPD-N-330	3/8"	1 1/16"	30	3,000	78	MPDL-N-330	62	1
MPD-N-430	1/2"	1 3/16"	30	2,500	79	MPDL-N-430	62	1
TDMP SERIES Medium pressure reels are furnished standard with dual-hydraulic hose banded together every 2-3 feet with power strip-type clamps. Maximum temperature 250° F.								
TDMP-N-350	3/8"	1 1/16"	50	3,000	104	TDMP-L-N-350	79	2
TDMP-N-450	1/2"	1 3/16"	50	2,500	106	TDMP-L-N-450	79	2

MPD & TDMP SERIES: REEL SPECIFICATIONS

MPD SERIES

- External fluid path with dual port melanized 90° full-flow NPT swivel inlet
- Swivel Seals: TEFLON
- Sturdy single pedestal design with Coxreels' exclusive Super Hub™ dual axle support system
- One-sided supply/return hookup
- Enclosed factory tuned & matched cartridge-style spring motor
- Non corrosive stainless steel spring, pawl & zinc plated ratchet
- Multi-position lock ratchet mechanism secures cable at desired length

TDMP SERIES

- External fluid path with dual port melanized 90° full-flow NPT swivel inlet
- Swivel Seals: TEFLON
- Sturdy dual pedestal design with Coxreels' exclusive Super Hub™ triple axle support system
- One-sided supply/return hookup
- Enclosed factory tuned & matched cartridge-style spring motor
- Non corrosive stainless steel spring, pawl & zinc plated ratchet
- Multi-position lock ratchet mechanism secures cable at desired length



WARNING: Cancer and reproductive Harm – See www.P65Warning.ca.gov for more information

REEL DIMENSIONS

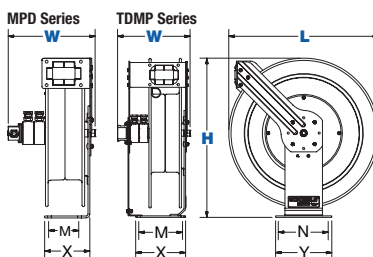
Technical Data Sheets Available On Website

SIZE INDEX	W	H	L	X	Y	M	N
1	11 1/2"	21 1/8"	19 1/2"	6"	6"	4"	5"
2	11 5/8"	25 1/2"	24"	8"	9"	7"	8"

Overall Dimensions

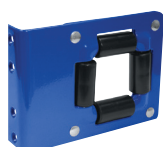
Base

Mounting Pattern



TOP REQUESTED UPGRADES & ACCESSORIES

SEE PAGE 17 FOR ADDITIONAL ACCESSORIES



UPGRADE TO SOLID ROLLERS

Heavy duty machined from solid plastic rollers.

STATIC DISCHARGE CABLE REELS **SD & SDH SERIES**

3/32" Ø

COXREELS® SD and SDH Series "Static Discharge" cable reels are built heavy duty and designed for long lasting performance. They are specifically designed to be used in combustible environments where the static buildup could ignite a spark and subsequent explosion. Static discharge or grounding reels are commonly paired with fuel hose reels.

SD SERIES

CABLE					LESS CABLE		SIZE INDEX
MODEL	FT.	O.D.	APRX. LBS.	EZ-COIL MODELS	MODEL	APRX. LBS.	
GALVANIZED CABLE							
SD-50	50	5/32"	20	EZ-SD-50	SDL-50	18	1
SD-75	75	5/32"	31	EZ-SD-75	-	-	2
SD-100	100	5/32"	32	EZ-SD-100	SDL-100	28	2
STAINLESS STEEL CABLE							
SD-50-1	50	5/32"	20	EZ-SD-50-1	SDL-50	18	1
SD-75-1	75	5/32"	31	EZ-SD-75-1	-	-	2
SD-100-1	100	5/32"	32	EZ-SD-100-1	SDL-100	28	2

To order **EZ-Coil®** equipped models less hose, please add prefix "EZ-"

SDH SERIES

CABLE				LESS CABLE		SIZE INDEX
MODEL	FT.	O.D.	APRX. LBS.	MODEL	APRX. LBS.	
GALVANIZED CABLE						
SDH-100	100	5/32"	24	-	-	3
SDH-200	200	5/32"	28	SDHL-200	20	3
STAINLESS STEEL CABLE						
SDH-100-1	100	5/32"	24	-	-	3
SDH-200-1	200	5/32"	28	SDHL-200	20	3

REEL DIMENSIONS

Technical Data Sheets Available On Website

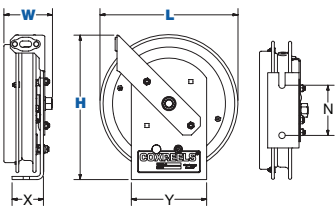
SIZE INDEX	W	H	L	X	Y	N
1	3 7/8"	11 1/2"	11"	2 1/2"	6"	4"
2	4"	15"	14 1/2"	2 1/2"	6"	4"
3	5 3/4"	11 1/2"	11"	2 1/2"	6"	4"

Overall Dimensions

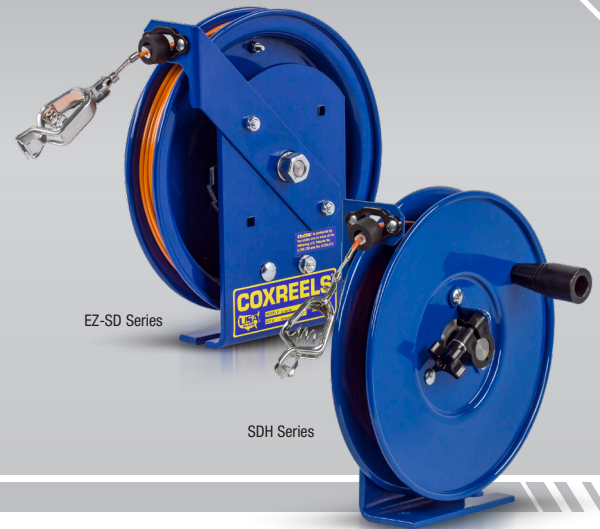
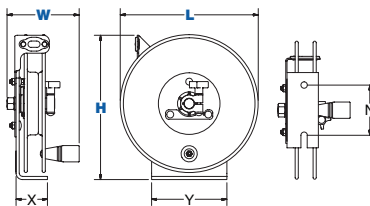
Base

Mounting Pattern

SD Series



SDH Series



EZ-SD Series

SDH Series

SD & SDH SERIES :: REEL SPECIFICATIONS

STATIC DISCHARGE

- Available with 7 strand x 7 wire galvanized steel or stainless steel 3/32" cable
- High visibility orange vinyl cable cover (O.D.= 5/32" with cable cover)
- Includes cable, ball stop & 50 Amp grounding clamp (100 Amp copper grounding clamp available, consult factory)

DESIGN & STRUCTURE

- Compact static discharge cable reel available in spring rewind or direct hand crank retraction
- Guide arm adjusts to wall, floor, vehicle & overhead positions
- Solid one piece, heavy gauge 1/4" steel base for maximum stability
- 1" solid steel axle & lubricated precision bearings for smooth rotation
- Bottom of base is un-powder coated to ground reel
- Controlled retraction speed up to 80% slower on **EZ-COIL** models
- (On SD Series only) Enclosed factory tuned & matched cartridge-style spring motor. Non corrosive stainless steel spring, pawl & zinc plated ratchet
- (On SD Series only) Multi-position non-sparking lock ratchet mechanism secures cable at desired length. Simple design with direct hand crank action.



WARNING: Cancer and reproductive Harm – See www.P65Warning.ca.gov for more information

TOP REQUESTED UPGRADES & ACCESSORIES

SEE PAGE 17 FOR ADDITIONAL ACCESSORIES



ORDER EZ-COIL® MODELS ON SD SERIES

EZ-Coil® is a patented controlled retraction technology offered exclusively on Coxreels' Safety Series reels. It retracts up to 80% slower than conventional reels, resulting in workplace safety, protection from injury & costly property damage.

ORDER 100 AMP CLAMP

Heavy duty copper clamp designed for heavy grounding requirements. It has a jaw opening of 1.06" and a steel spring.



ORDER DOUBLE CLAMP

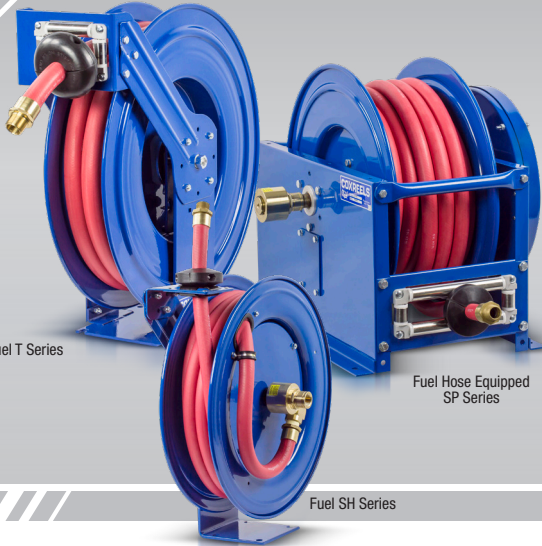
Heavy duty clamps made from zinc plated steel. Both clamps are rated for 50 amp. Each has a jaw opening of 1.06" and a steel spring.



1/2" - 1" I.D.

FUELING REELS

SPRING DRIVEN FUEL HOSE REELS



Fuel T Series

Fuel Hose Equipped
SP Series

Fuel SH Series

FUELING SERIES :: REEL SPECIFICATIONS

FUEL SERIES SWIVEL

- Machined from solid brass 90° full-flow NPT swivel inlet for fuel dispensing applications. Electroless nickel plated steel swivel on 1" models
- Swivel seals: Nitrile

FUEL SERIES HOSE

- Fuel dispensing hose designed to convey non-aromatic fuels including diesel, kerosene, fuel oil & heating oil. Temperature Range: -20°F to +190°F

DESIGN & STRUCTURE

- Guide arm adjusts to wall, floor, vehicle & overhead positions
- Solid one piece, heavy gauge 1/4" steel base & support post for maximum stability
- 1" solid steel axle & lubricated precision bearings for smooth rotation
- (On SH Series only)** Sturdy single pedestal reel features Coxreels' exclusive Super Hub™ dual axle support system
- (On T Series only)** Sturdy dual pedestal reel features Coxreels' exclusive Super Hub™ triple axle support system
- (On T Series only)** Stainless Steel rollers
- (On SP Series only)** Reel features a sturdy box-style
- Controlled retraction speed up to 80% slower on **EZ-COIL** models
- Enclosed factory tuned & matched cartridge-style spring motor
- Non-corrosive stainless steel spring, pawl & zinc plated ratchet
- Multi-position lock ratchet mechanism secures hose at desired length frame design



WARNING: Cancer and reproductive Harm – See www.P65Warning.ca.gov for more information

COXREELS® Fuel Dispensing Reels are designed to handle various non-aromatic fuel applications including diesel, kerosene, fuel oil and heating oil. Coxreels® professional fuel dispensing reels are available in heavy-duty single pedestal (SH Series), supreme-duty dual pedestal (T Series) or box-style frame (SP Series) configurations. These fuel reels are an essential component found in utility, ground support, and bulk liquid handling transport services mounted on fuel storage & dispensing systems, fuel/lube trucks, aircraft refuelers, and tank trucks. The convenient uncoiling systems with the added hose control allow the operator to efficiently handle fuel transfers.

FUEL HOSE SERIES

Models are equipped with fuel hose. **Note:** Do not exceed listed hose O.D. to obtain maximum length.

HOSE							LESS HOSE			SIZE INDEX
MODEL	I.D.	O.D.	FT.	PSI	APRX. LBS.	EZ-COIL MODELS	MODEL	APRX. LBS.		
FUEL HOSE SH SERIES										
SHF-N-525	¾"	1⅜"	25	300	52	EZ-SHF-525	*SHL-N-525-BXN	45	1	
FUEL HOSE T SERIES										
TSHF-N-535	¾"	1⅜"	35	300	77	EZ-TSHF-535	THSL-N-535-BXN	67	2	
TSHF-N-550	¾"	1⅜"	50	300	83	EZ-TSHF-550	*TSHL-N-550-BXN	70	2	
TSHF-N-575	¾"	1⅜"	75	300	93	-	TSHL-N-575-BXN	73	3	
TSHF-N-635	1"	1½"	35	300	92	-	TSHL-N-635-BXN	71	4	
TSHF-N-650	1"	1½"	50	300	98	-	TSHL-N-650-BXN	77	3	
FUEL HOSE SP SERIES										
MODEL	I.D.	O.D.	FT.	PSI	APRX. LBS.	INLET/OUTLET N.P.T.	MODEL	APRX. LBS.	SIZE INDEX	
SLPF-550	¾"	1⅜"	50	300	99	¾"	SLPL-550	86	5	
SLPF-575	¾"	1⅜"	75	300	136	¾"	SLPL-575	117	6	
SLPF-5100	¾"	1⅜"	100	300	151	¾"	SLPL-5100	126	6	
SLPF-625	1"	1½"	25	300	106	1"	SLPL-625	90	7	
SLPF-650	1"	1½"	50	300	139	1"	SLPL-650	109	8	
SLPF-675	1"	1½"	75	300	193	1"	SLPL-675	148	9	

* EZ-Coil® option only available on these less hose models. Please add prefix "EZ-"

REEL DIMENSIONS

Technical Data Sheets Available On Website

SIZE INDEX	W	H	L	X	Y	M	N
1	8 1/4"	21 1/4"	19 1/2"	6"	6"	4"	5"
2	9 7/8"	25 1/2"	24"	8"	9"	7"	8"
4	12"	25 1/2"	24"	8"	9"	7"	8"
5	19 5/8"	20 1/2"	22 7/8"	15 3/8"	21 1/2"	10 1/2"	7 1/2"
6	19 5/8"	24 1/2"	26 3/8"	15 3/8"	25"	10 1/2"	7 1/2"
7	21"	20 1/2"	22 7/8"	15 3/8"	21 1/2"	10 1/2"	7 1/2"
8	21"	24 1/2"	26 3/8"	15 3/8"	25"	10 1/2"	7 1/2"
9	21"	28 1/2"	30 3/8"	15 3/8"	29"	10 1/2"	7 1/2"

Overall Dimensions

Base

Mounting Pattern

TOP REQUESTED UPGRADES & ACCESSORIES

SEE PAGE 17 FOR ADDITIONAL ACCESSORIES



ORDER EZ-COIL® MODELS

EZ-Coil® is a patented controlled retraction technology offered exclusively on Coxreels' Safety Series reels. It retracts up to 80% slower than conventional reels, resulting in workplace safety, protection from injury & costly property damage.



UPGRADE TO SOLID ROLLERS

Heavy duty machined from solid plastic rollers. Only for T Series 1/2" models and SH Series.



COXREELS® 1185 Series hand crank and motor driven hose reels are designed to handle long lengths of large diameter hose for increased volume delivery. Coxreels' exclusive low profile outlet riser and open drum design provide a noncrimping, flat smooth hose wrap. The sturdy all welded "A" frame base provides exceptional strength to handle the extra weight without sacrificing performance, even in demanding mobile applications.

1185 SERIES

- ALL REELS SUPPLIED LESS HOSE

LESS HOSE										SIZE INDEX
MODEL	STANDARD CAP			OPTIONAL CAP. Reducer required			INLET SWIVEL & OUTLET RISER	PSI	APRX. LBS.	
	I.D.	O.D.	FT.	I.D.	O.D.	FT.				
1185 SERIES - IN-LINE SWIVEL										
1185-1124	1½"	2¼"	50	1¼"	1⅜"	75	1½" F NPT	1,500	76	1
1185-1524	1½"	2¼"	75	1¼"	1⅜"	100	1½" F NPT	1,500	81	2
1185-2024	1½"	2¼"	100	1¼"	1⅜"	125	1½" F NPT	1,500	94	3
1185-2528	1½"	2¼"	150	1¼"	1⅜"	220	1½" F NPT	1,500	122	4
1185 SERIES - 90° SWIVEL										
1185-1124-BUXX	1½"	2¼"	50	1¼"	1⅜"	75	1½" F NPT	3,000	76	1
1185-1524-BUXX	1½"	2¼"	75	1¼"	1⅜"	100	1½" F NPT	3,000	81	2
1185-2024-BUXX	1½"	2¼"	100	1¼"	1⅜"	125	1½" F NPT	3,000	94	3
1185-2528-BUXX	1½"	2¼"	150	1¼"	1⅜"	220	1½" F NPT	3,000	122	4



1185 SERIES :: REEL SPECIFICATIONS

SWIVEL

- External fluid path with in-line electroless nickel plated steel full-flow NPT swivel inlet
- Swivel Seals: NITRILE
- (Optional high pressure models with suffix -BUXX) External fluid path with electroless nickel plated steel 90° full-flow NPT swivel inlet. Swivel Seals: AFLAS. 3,000 PSI.

DESIGN & STRUCTURE

- All welded steel "A" frame construction for superior reel structure
- Exclusive low profile outlet riser & open drum slot design for flat smooth hose wrap
- Robust lubricated horizontal surface mount bearings for easy rotation
- (On hand crank models) Long-handled locking pin to secure reel from rotation during transport or storage
- Reliable chain & sprocket drive on motor driven models
- Solid steel direct hand crank with smooth round handle
- See Motor Options Chart



WARNING: Cancer and reproductive Harm – See www.P65Warning.ca.gov for more information

REEL DIMENSIONS

Technical Data Sheets Available On Website

SIZE INDEX	W				H	L	X	Y	Ø	Dw
	CRANK	ELEC.	AIR / HYD.	-BUXX EQUIPPED						
1	25"	26 1/8"	23 3/8"	26 7/8"	26"	24"	17"	22 1/4"	10 1/2"	11 1/2"
2	29"	30 1/8"	27 3/8"	30 7/8"	26"	24"	21"	22 1/4"	10 1/2"	15 1/2"
3	33 1/2"	34 5/8"	31 7/8"	35 3/8"	26"	24"	25 1/2"	22 1/4"	10 1/2"	20"
4	38 1/2"	39 5/8"	36 7/8"	40 3/8"	30"	28"	30 1/2"	24 1/2"	10 1/2"	25"

Overall Dimensions

Base

Drum



MOTORIZE THE REWIND OF YOUR REEL

Featuring a lubricated chain and a zinc plated steel sprocket, the 1185 Series drive system provides a smooth, continuous rewind on motorized reels. Choose from several motor options shown in the table below.

SEE PAGE 22 FOR ADDITIONAL MOTOR ACCESSORIES

SUFFIX	TYPE	DESCRIPTION	ADD ON LBS
A	AIR - 4 VANE	ALUMINUM BODY AIR MOTOR	8
AB	AIR - 6 VANE	CAST IRON AIR MOTOR	8
C	FRONT HAND CRANK	BEVEL GEARED CRANK	3
E	12 V DC, 1/3 HP	REVERSIBLE	13
ED	12 V DC, 1/2 HP EXP.	EXPLOSION PROOF, REVERSIBLE	26
EF	24 V DC, 1/3 HP	REVERSIBLE	13
EB	24 V DC, 1/2 HP EXP.	EXPLOSION PROOF, REVERSIBLE	26
EA	115 V AC, 1/2 HP EXP.	EXPLOSION PROOF REVERSIBLE AC RECTIFIED	26
EJ	230 V AC, 1/2 HP EXP.	EXPLOSION PROOF REVERSIBLE AC RECTIFIED	26
H	HYDRAULIC	END PORTED 9/16-18 UNF	6

TOP REQUESTED UPGRADES & ACCESSORIES

SEE PAGE 17 FOR ADDITIONAL ACCESSORIES



ADD 4-WAY ROLLERS

4-way enclosed pinch-proof stainless steel rollers are 1 in diameter supported by powder coated steel brackets. Weight: Add 10 lbs. to reel weight.



ADD 3-WAY ROLLERS

3-way open spool roller assembly with 1.5 chrome-plated machined steel spools & 1.5 stainless steel tubing bottom roller & powder coated steel brackets. Weight: Add 14 lbs. to reel weight.



UPGRADE TO STAINLESS STEEL

STAINLESS STEEL CAPTIVE BEARING SWIVEL / STAINLESS STEEL IN-LINE SWIVEL: the stainless steel swivel is machined from solid 304 stainless steel for increased corrosion resistance.

STAINLESS STEEL FLUID PATH: This options uses the same swivel as described in the stainless steel swivel upgrade options and couples it to a upgraded 304 stainless steel plumbing axle to improve the corrosion resistance of the entire fluid path.



ADD PINLOCK TO MOTORIZED MODELS

The spring-loaded lock pin assembly is designed to lock & secure the reel, even in mobile conditions over rough terrain.

1 1/2" I.D.

1600 SERIES

HAND CRANK & MOTORIZED HYBRID FRAME HOSE REELS

COXREELS® 1600 Series features the most versatile symmetric reel design in the market today. This feature-rich reel series is the most versatile in the marketplace and features nearly endless component configurations on a robust platform for any conceivable application. Targeted for the tough demands of customers requiring various dimensional choices, the series offers flexible size envelopes for any given hose capacity. The 1600 series hybrid frame offers unique accessories and upgrades which allow for application tailoring resulting in enhanced performance and usability.

1680 MODELS

- ALL REELS SUPPLIED LESS HOSE

LESS HOSE											
MODEL	Hose Cap. 1½" I.D.	Optional Hose Cap. 1¼" I.D.	DIMENSIONS								APRX. LBS
			DW	L	W			H	X	Y	
			DRUM WIDTH	DISC SIZE	CRANK	ELEC.	AIR/ HYD.				
1680-1120	35'	40'	11.5"	20"	247⁄8"	251⁄8"	237⁄8"	21¾"	18½"	20¼"	60
1680-0824			8.5"	24"	213⁄8"	215⁄8"	203⁄8"	25¼"	15"	23¼"	67
1680-1520	50'	55'	15.5"	20"	287⁄8"	291⁄8"	277⁄8"	21¾"	22½"	20¼"	68
1680-1124			11.5"	24"	213⁄8"	215⁄8"	203⁄8"	29¼"	15"	26¼"	73
1680-2220	70'	85'	20"	20"	353⁄8"	355⁄8"	343⁄8"	21¾"	29"	20¼"	82
1680-1324			13.5"	24"	267⁄8"	271⁄8"	257⁄10"	25¼"	20½"	23¼"	77
1680-1524	85'	100'	15.5"	24"	287⁄8"	291⁄8"	277⁄10"	25¼"	22½"	23¼"	81
1680-1128			11.5"	28"	247⁄8"	251⁄8"	237⁄10"	29¼"	18½"	26¼"	88
1680-2024	100'	130'	20"	24"	333⁄8"	335⁄8"	323⁄8"	25¼"	27"	23¼"	91
1680-1328			13.5"	28"	267⁄8"	271⁄8"	257⁄10"	29¼"	20½"	26¼"	92
1680-2224	125'	145'	22"	24"	353⁄8"	355⁄8"	343⁄8"	25¼"	29"	23¼"	95
1680-1528			15.5"	28"	287⁄8"	291⁄8"	277⁄10"	29¼"	22½"	26¼"	96
1680-2028	150'	175'	20"	28"	333⁄8"	335⁄8"	323⁄8"	29¼"	35"	23¼"	106
1680-2824			28"	24"	413⁄8"	415⁄8"	403⁄8"	25¼"	27"	26¼"	107
1680-3324	200'	200'	33"	24"	463⁄8"	465⁄8"	453⁄8"	25¼"	40"	23¼"	117
1680-2428			24"	28"	373⁄8"	375⁄8"	363⁄8"	29¼"	31"	26¼"	114
1680-3328	275'	350'	33"	28"	463⁄8"	465⁄8"	453⁄8"	29¼"	40"	26¼"	132

1680 MODEL :: REEL SPECIFICATIONS

SWIVEL

- External fluid path with in-line nickel plated steel full-flow NPT swivel inlet
- Swivel Seals: NITRILE

DESIGN & STRUCTURE

- All welded hybrid frame with added bolts
- Exclusive low profile outlet riser & open drum slot design for flat smooth hose wrap
- Permanently lubricated self-aligning pillow block bearing for trouble-free & smooth rotation & robust lubricated horizontal surface mount bearing for easy rotation
- Adjustable tension brake to prevent "free-wheeling" during operation
- Long-handled locking pin to secure reel from rotation during transport or storage
- Reliable chain & sprocket drive on motor driven models
- Solid steel direct hand crank with smooth round handle
- All metal bevel crank and gear construction
- See Motor Options Chart



WARNING: Cancer and reproductive Harm – See www.P65Warning.ca.gov for more information

TOP REQUESTED UPGRADES & ACCESSORIES

SEE PAGE 17 FOR ADDITIONAL ACCESSORIES



ADD ROLLERS

4-WAY ROLLERS: 4-way enclosed pinch-proof stainless steel rollers are 1 in diameter supported by powder coated steel brackets.

3-WAY ROLLERS: 3-way open spool roller assembly with 1.5 chrome-plated machined steel spools & 1.5 stainless steel tubing bottom roller & powder coated steel brackets.



ADD UNIVERSAL ROLLERS

4-WAY ROLLERS: 4-way enclosed pinch-proof stainless steel rollers are 1" in diameter.

3-WAY ROLLERS: 3-way open spool roller assembly with 1.5" chrome-plated machined steel spools and 1.5" stainless steel bottom roller.

Rollers mounted on universal bracket with 4 various positions 0°, 30°, 60°, 90°. Made from steel, powder coat black.

UPGRADE TO STAINLESS STEEL

STAINLESS STEEL CAPTIVE BEARING SWIVEL: Featuring heavy duty ball bearings for smooth rotation and increased side load capabilities, the stainless steel swivel is machined from solid 304 stainless steel for increased corrosion resistance.

STAINLESS STEEL FLUID PATH: This options uses the same swivel as described in the stainless steel swivel upgrade and couples it to a upgraded 304 stainless steel plumbing axle to improve the corrosion resistance of the entire fluid path.

IDLER GEARS AVAILABLE

Reduce drum speed & increase torque. Available in three sizes : 1:2 ratio, 1:3 ratio, and 1:4 ratio, they are factory installed on the motor kits.

SWIVELS & O-RING COMPATIBILITY CHART

		Brass	Zinc Plated Steel	Electroless Nickel Plated Steel	Stainless Steel	In-Line Nickel Plated Steel or Stainless Steel	Melonized Steel
Available Swivel I.D. Female NPT fittings (*BSPT fittings available)	1/4"	•	•				•
	3/8"	•	•		•		
	1/2"	•	•		•		
	3/4"	•			•		
	1"			•	•		
	1 1/2"			•	•	•	
	2"			•	•	•	
Available Swivel Seals (Refer to O-Ring Compatibility Chart for desired application)	Buna	•	•	•	•	•	
	EPDM	•	•	•	•	•	
	Viton®	•	•	•	•	•	•
	AFLAS			•	•		

O-RING COMPATIBILITY CHART

Intended as a general guideline only. Users must test under their own operating guidelines to determine suitability. Please consult factory if your application is not listed.

1 = Recommended | 2 = Fair | 3 = Poor | 4 = Unsatisfactory

	ACETYLENE	AIR (-30°F TO +25°F)	AIR (+25°F TO 200°F)	AIR (200°F TO 300°F)	AIR (300°F TO 400°F)	ANTIFREEZE	FUEL OIL / KEROSENE	GREASE (PETROLEUM BASED)	HYDROCHLORIC ACID	MOTOR OIL (PETROLEUM BASED)	NATURAL GAS	NITROGEN	OXYGEN (200°F TO 300°F)	OXYGEN (COLD)	PESTICIDES	STEAM (BELOW 300°F)	STEAM (300°F TO 400°F)	SEWAGE	SEA WATER	WATER (UP TO 200°F)
→	1	1	1	3	4	2	1	1	3	1	1	1	4	2	2	4	4	1	1	1
→	1	1	1	2	4	1	4	4	2	4	4	1	4	2	4	1	2	1	1	1
→	1	2	1	1	1	2	1	1	1	1	1	1	2	1	1	2	3	2	2	2
→	1	3	1	1	1	2	2	1	2	1	1	1	4	2	1	2	3	1	1	1



Brass Swivels

CNC machined from solid brass swivels are built for general multi-purpose applications. Configured in a 90 degree fluid path with full flow designed. Working pressure up to 3,000 PSI & -40°F to 400°F*.



Zinc Plated Steel Swivels

Machined from strong low carbon steel & configured in a 90 degree fluid path with full flow designed. Zinc plated steel swivels are recommended for non-corrosive applications. Working pressure up to 5,000 PSI & -40°F to 400°F*.



Electroless Nickel Plated Steel Swivels

Machined from strong low carbon steel & configured in a 90 degree fluid path with full flow designed. Nickel plated steel swivels are recommended for mildly corrosive applications. Working pressure up to 4,000 PSI & -40°F to 400°F*.



Stainless Steel Swivels

Machined from high quality, pure 316 stainless steel & configured in a 90 degree fluid path with full flow design. Stainless steel swivels offer superior corrosion protection. Working pressure up to 5,000 PSI & -40°F to 400°F*.



In-line Swivels

Nickel plated steel or stainless steel swivel configured in an in-line fluid path with full flow design. Working pressure up to 1,500 PSI for 1 1/2" I.D. & 1,000 PSI for 2" I.D. -40°F to 400°F*.



Melonized Steel Swivels

Configured in a 90 degree fluid path with 1/4" ports, melonized steel swivels are used for hydraulic applications. Working pressure up to 10,000 PSI & -5°F to 400°F*.

*Temperature rating depends on the seal type selected

MOUNTING & ROLLER BRACKETS

	PART NO.	REEL SERIES					
		P	SH, MP & HP	T	PC	P-W & SHW	P-WC
 Swing Bracket For vertical surface mounting, allows reel to swing 180°. Powder coated crinkle black 1/4" steel. Weight: 5 lbs.	15720	•	•		•	•	•
	15725			•			
 Swivel Bracket For horizontal surface mounting, ball bearing rotation, allows reel to swivel 345°. Powder coated crinkle black heavy gauge steel. Weight: 6 lbs. NOT FOR USE IN CEILING APPLICATIONS.	15721	•	•	•	•	•	•
 EZ-Up Bracket Reel easily slides in & out for easy overhead mounting. Use as an alternative to the #MR-1. Must be ordered with #15724 for "I" or "H" beam installations. Weight: 6.5 lbs.	15723	•	•	•	•	•	•
 EZ-Up "I" or "H" Beam Adapter Must be ordered with #15723. Powder coated crinkle black, all steel construction. Weight: 5 lbs.	15724	•	•	•	•	•	•
 Mounting Bracket For overhead mounting, fits 3" to 8 1/2" flange on "I" or "H" beam. Powder coated crinkle black 3/16" bent steel. Weight: 13 lbs.	MR-1	•	•		•	•	•
	MRT-1			•			
 4-Way Roller Bracket Heavy gauge steel, powder coated Coxreels blue (4RB) Available in stainless steel (4RB-SS). Weight: 1 lbs.	4RB 1/4"-3/4"	•	•	•	•	•	•
	4RB-SS 1/4"-3/4"	•	•	•	•	•	•

HOSE STOPS & GUARDS



PVC INLET HOSE ASSEMBLIES



BEND RESTRICTORS



Designed to limit the degree of bending without compromising the integrity of the hose assembly while also preventing the hose-end from kinking, excessive wearing, & tearing.

HOSE STOPS PART NO.	HOSE GUARD PART NO.	HOSE		CORD	OVERALL
		I.D.	O.D.		
131	237-1	1/4"	1/2"	12/3 SJO	2 1/2"
131-1	237-1	-	-	16/3 SJO	2 1/2"
131-3	237-1	3/8"	2 1/32"	10/3 SO	2 1/2"
131-4	398-1	1/2"	3/4"	-	2 1/2"
254	-	1/2"	3/4"	-	3 1/2"
430	398-1	3/4"	1"	-	3 1/2"
20214	-	1"	1 9/16"	-	5"

PART NO.	FITTINGS	I.D.	LENGTH	PSI
5150-1.5	1/4" Male x Female NPT	1/4"	18"	300
5153-1.5	3/8" Male x Female NPT	3/8"	18"	300
5154-1.5	1/2" Male x Female NPT	1/2"	18"	300
5155-1.5	3/4" Male x Male NPT	3/4"	18"	300
5224-1.5	3/8" Male x Male NPT	3/8"	18"	3,000
5256-1.5	1/2" Male x Male NPT	1/2"	18"	2,500
5290-1.5	3/4" Male x Male NPT	3/4"	18"	1,500
5304-1.5	1/4" Male x Male NPT	1/4"	18"	5,000
5336-1.5	3/8" Male x Male NPT	3/8"	18"	4,000






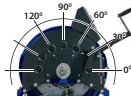
ADD SUFFIX	I.D.	DESCRIPTION	PSI
-BxB	1/4"	Black PVC Bend Restrictor	300
-BxB	3/8"	Black PVC Bend Restrictor	300
-BxB	1/2"	Black PVC Bend Restrictor	300



WARNING: Cancer and reproductive Harm – See www.P65Warning.ca.gov for more information

ACCESSORIES






4-WAY ROLLER BRACKETS

	PART NO.	1125	1185	1600
 <p>Top Rewind 4-way enclosed pinch-proof stainless steel rollers are 1" in diameter supported by powder coated steel brackets. Specify drum width. Weight: 10 lbs.</p>	15353*	•		
	15369* 24" disc size		•	
	15369-1* 28" disc size		•	
	16901 20" disc size			•
	16902 24" disc size			•
 <p>Bottom Rewind 4-way enclosed pinch-proof stainless steel rollers are 1" in diameter supported by powder coated steel brackets. Specify drum width. Weight: 10 lbs.</p>	15354*	•		
	15370-1*		•	
 <p>Top Rewind Extension 4-way enclosed pinch-proof stainless steel rollers are 1" in diameter supported by powder coated steel brackets. Specify drum width. Weight: 10 lbs.</p>	15353-P*	•		
 <p>4-Way Roller 4-way enclosed pinch-proof stainless steel rollers are 1" in diameter.</p>	CONSULT FACTORY	•	•	•
 <p>Universal Roller 4-Way 4-way enclosed pinch-proof stainless steel rollers are 1" in diameter. Mounted on universal bracket with 4 various positions 0°, 30°, 60°, 90°. Made from steel, powder coat black.</p> 	16930 20" disc size			•
	16931 24" disc size			•
	16932 28" disc size			•

*Add drum width dimension as the suffix to the part number

EXAMPLE: An 1125-4-200 reel drum width is **12"**. Order part number: **15353-12**


3-WAY ROLLER BRACKET ASSEMBLIES

	PART NO.	1125	1185	1600
 <p>Top Rewind 3-way open spool roller assembly with 1.5" chrome-plated machined steel spools & 1.5" stainless steel tubing bottom roller & powder coated steel brackets. Specify drum width. Weight: 14 lbs.</p>	15359*	•		
	15360* 24" disc size		•	
	15361* 28" disc size		•	
 <p>Bottom Rewind 3-way open spool roller assembly with 1.5" chrome-plated machined steel spools & 1.5" stainless steel tubing bottom roller and powder coated steel brackets. Specify drum width. Weight: 14 lbs.</p>	15362*	•		
	15363* 24" disc size		•	
	15364* 28" disc size		•	
 <p>3-Way Roller 3-way open spool roller assembly with 1.5" chrome-plated machined steel spools & 1.5" stainless steel tubing bottom roller.</p>	CONSULT FACTORY	•	•	•
 <p>Universal Roller 3-Way 3-way open spool roller assembly with 1.5" chrome-plated machined steel spools & 1.5" stainless steel bottom roller. Mounted on universal bracket with 4 various positions 0°, 30°, 60°, 90°. Made from steel, powder coat black. Mount multiple roller guides for dual direction payout.</p> 	16933 20" disc size			•
	16934 24" disc size			•
	16935 28" disc size			•

*Add drum width dimension as the suffix to the part number

EXAMPLE: An 1125-4-200 reel drum width is **12"**. Order part number: **15359-12**










1125 SERIES STACKING BRACKET

	PART NO.	1125WCL
 <p>Top Rewind Stack your 1125 Series reels for double the storage in the same work area. Powder coated crinkle black, steel construction. Weight 6 lbs.</p>	7480	•




*Add drum width dimension as the suffix to the part number

EXAMPLE: An 1125-4-200 reel drum width is **12"**. Order part number: **7480-12**

MODEL UPGRADES & ADDITIONS

	PART NO.	1125	1185	1600
 <p>Spring Loaded Lock Pin The spring-loaded lock pin assembly is designed to lock & secure the reel, even in mobile conditions over rough terrain.</p>	20843	•	•	•
 <p>3-Way Pin Lock Kit 3 Positions - Pin locks reel with heavy duty 3/4" solid steel pin. Disengages for free unwind. Can be used to activate switch for electric rewind.</p>	16702			•
 <p>Universal Bracket Kit 4 various positions 0°, 30°, 60°, 90° for mounting bevel crank on either side of the reel. Includes removable center guard cap for easy bearing access. Made from powder coated steel.</p>	16400			•
 <p>Gear Guards Guards beveled gears or chain & sprocket from dirt & foreign matter, while also protecting operator from injury.</p>	7406	•		
	8176-1 24" disc size		•	
	8176-2 28" disc size		•	
	16601-122 20" disc size			•
	16602-138 24" disc size			•
 <p>Lower Chain Guards Guard access to chain from side of reel. Includes bracket to cover access to chain from front of reel from gap between disk & frame.</p>	16620 20" disc size			•
	16624 24" disc size			•
	16628 28" disc size			•
 <p>Idler Gear Reduce drum speed & increase torque. Available in three sizes, they are factory installed on the motor kits.</p>	17250-2 (1:2 ratio)			•
	17250-3 (1:3 ratio)			•
	17250-4 (1:4 ratio)			•
 <p>3 Way Brake A 3-position brake with lock, friction & free spinning positions. Easily clears brackets & guards for gloved-hand operation. In locked position, does not protrude past front of reel.</p>	16703			•
 <p>Heavy Duty Band Brake Steel band lined with brake friction material. Tension is adjusted with a wing nut or a knob by hand (no tools required). - Increased braking power - Increased brake life. - Easier & more precise brake adjustment (control).</p>	8340	•		
	8302		•	
	8302-1 90° Swivel		•	
	16705			•
 <p>Crank Handle Holster Universal design mounts to either side of the reel with independent mounting holes. Features chained retaining pin to keep handle in place.</p>	16704			•
 <p>Hose Strain Relief Kit - Allows the hose to be secured against the drum. - The clamp provides a strain relief when the hose is fully extended from the reel. - Allow the hose to be routed between the riser connection & the hose clamp with a proper bend radius.</p>	HSRK-050 1/2" Hose	•		
	HSRK-075 3/4" Hose	•		
	HSRK-100 1" Hose	•		•
	HSRK-100F 1" Forestry Hose	•		
	HSRK-125 1 1/4" Hose		•*	
	HSRK-150 1 1/2" Hose		•	•

SPEED CONTROLLERS FOR MOTORIZED MODELS








	PART NO.	MOTOR OPTIONS							
		E	EB	ED	EA	EJ	EF	A	AB
 <p>Electric Motor Speed Controller For AC motors</p>	20868				•	•			
 <p>Control Valve Control valve for No. 4 Gast Air Motor available upon request</p>	15212							•	
 <p>Control Valve Control valve for No. 6 Gast Air Motor available upon request</p>	15212-1								•










WARNING: Cancer and reproductive Harm – See www.P65Warning.ca.gov for more information

ACCESSORIES

SPEED CONTROLLERS FOR MOTORIZED MODELS

	PART NO.	MOTOR OPTIONS					
		E	EB	ED	EA	EJ	EF
 Explosion Proof Stationary Push Button Switch For 12V D.C. applications, must be used with solenoid. Cast 3/4" N.P.T. hub inlet.	20882	•					
 Vapor Proof Junction Box Includes box cover & gasket, has three 3/4" N.P.T. hubs.	20883	•	•	•	•	•	•
 General Purpose Reversing Switch For direct starting & reversing of A.C. rewind motor.	15210				•	•	
 Sealed Push Button Switch Weather proof, dust proof momentary contact. To be used with solenoid.	20876	•	•	•	•	•	•
 Solenoid Relay 12V D.C. for activating motor.	20877	•		•			
 Circuit Breaker 50 amp automatic reset, circuit breaker. A circuit breaker is recommended for all 12V D.C. explosion proof motors.	20878	•		•			
 Switch Box (Includes #20876, #20877, & #20878 & all parts needed to assemble the entire switch box) - Casing is powder coated crinkle black.	8281	•		•			

SPEED CONTROLLERS FOR MOTORIZED MODELS

	PART NO.	MOTOR OPTIONS					
		E	EB	ED	EA	EJ	EF
 Electrical Box & Switch - Installs on any DC electric motor kit. - Push button switch mounts to frame or to 3-Way Pin Lock. - Works with all guards and accessories.	16780-12 12 VDC 16780-24 24 VDC	•		•			
 115/230 AC/Volt Variable Speed Controller - 10-amp fuse. - On/off push button switch. - Forward/reverse feature.	20875				•	•	
 115/230 AC/Volt Variable Speed Controller - 10-amp fuse. - On/off push button switch.	20874				•	•	
 115/230 AC/Volt Variable Speed Controller 10-amp fuse.	20873				•	•	
 12 Volt DC Electric Motor Variable Speed Controller On/off push button switch. • Relay, 50-amp circuit breaker. • Forward/reverse feature.	20872	•		•			
 12 Volt DC Electric Motor Variable Speed Controller On/off push button switch. • Relay, 50-amp circuit breaker.	20871	•		•			
 12 Volt DC Electric Motor Variable Speed Controller	20870	•		•			

CUSTOMIZE YOUR REEL FROM CONCEPT TO COMPLETION





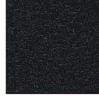
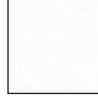

CUSTOMIZE YOUR REEL WITH COXREELS CUSTOM PRODUCTS:

Our engineering capabilities and manufacturing processes allow us to design and build top quality products for any conceivable application where reels are needed.

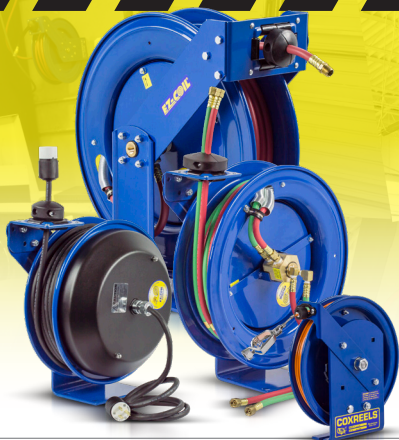
- Customize fluid paths/axles or create custom brackets, mounts, and accessories.
- Integrate with your specific hardware, systems, or devices.
- Modify drums, add divider disks, manipulate openings, or integrate hose handling devices.
- Combine features of various reel model lines, creating your own hybrid reel.
- Create custom retraction systems.
- Increase temperature and pressure capabilities, or multiply fluid paths.
- The possibilities are only limited by your imagination!

POWDER COAT OPTIONS*

3 digit suffix for spring driven or 4 digit suffix for hand crank & motorized models.

		
-BXX or -BXXX Blue	-RXX or -RXXX Red	-GXX or -GXXX Gray
		
-KXX or -KXXX Gloss Black	-CXX or -CXXX Crinkle Black	-WXX or -WXXX White
		
		-NXX or -NXXX Green

*Minimum quantity & or dollar amount may apply



EZ-COIL®

SAFETY REWIND SYSTEM

EZ-Coil® is a patented controlled retraction technology offered exclusively on Coxreels' Safety Series reels. EZ-Coil® retracts up to 80% slower than conventional reels, resulting in workplace safety, protection from injury & costly property damage.

NOBODY SHOULD BE WITHOUT EZ-COIL®!

up to **80% Slower Retraction**

	Conventional SPRING DRIVEN REELS	COXREELS EZ-COIL®
SPEED	25 ft./sec.	5 ft./sec.
WHIPPING	5-15 ft.	1 ft.
IMPACT	500 ft./lbs.	0-1 ft./lbs.

Based on an independent evaluation performed by COXREELS. Depending on certain conditions, results may vary.



www.coxreels.com • 1.800.COX.REEL

SERVICE TRUCKS

19



INDUSTRY CATALOGS



PRODUCT CATALOGS



CORPORATE HEADQUARTERS:

Tempe, Arizona USA

Phone: 480.820.6396 Fax: 480.820.5132

Toll Free: 800.COX.REEL Toll Free Fax: 800.229.REEL

www.coxreels.com info@coxreels.com



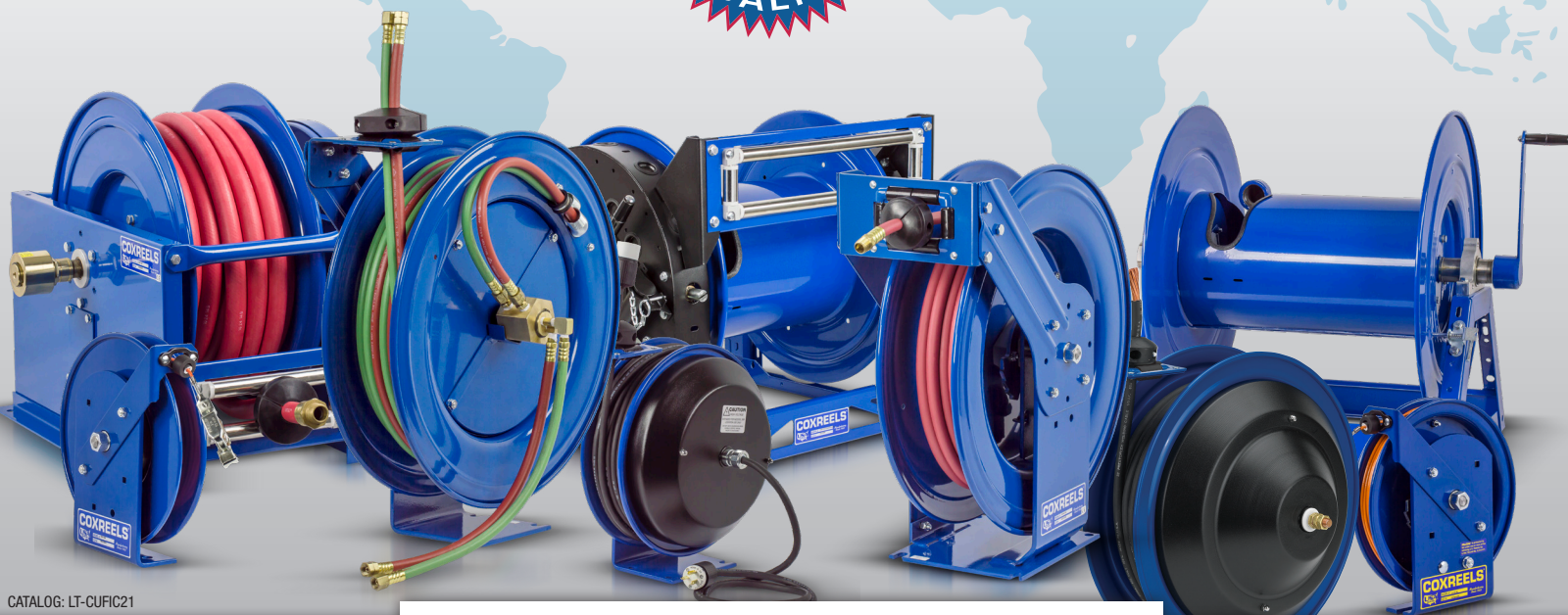
INTERNATIONAL:

EUROPE / MIDDLE EAST / AFRICA

Phone: +44 (0) 1536 464 990

Fax: +44 (0) 1536 464 999

www.crireels.com sales@cireels.com



CATALOG: LT-CUFC21

SERVICE TRUCKS REELS INDUSTRY CATALOG