

HOSE, CORD, & CABLE REELS

AGRICULTURAL & PEST CONTROL

COXREELS SINCE 1923



INDUSTRY CATALOG

AG & PEST CONTROL REELS



IT'S NOT JUST A LABEL,

IT'S A BADGE OF HONOR

Hose reels are essential components in industrial cleaning applications. Reels are the best choice for high pressure hose management solution in the power washing industry as they are used to neatly store and efficiently handle hoses on pressure washer units, adding convenience while routinely spraying and cleaning properties and equipment.

The Recognized Industry Leader

Coxreels is wholesale-only since 1923. Our product is made to high standards, supplying industrial grade product to distributors and OEMs worldwide. We are recognized as the leader in the reeling industry. We have been providing the most complete and diverse line of hose, cord, and cable reels for 10 decades!

The Most Complete Line of AG & Pest Control Reels in the Market

Our hose reels are innovatively designed and built to withstand the demanding worksite environments, chemicals, and heavy spraying where pest infestations are found; such as indoor and outdoor settings anywhere from homes, buildings, warehouses and facilities; to gardens, golf courses, agricultural farms, plantations and more. Also in farms, forestry services, landscape development and grounds maintenance, golf courses, and turf care. We understand that you take pride in growing and cultivating crops and livestock while protecting it and controlling the pest. We are equally as proud in the durability and reliability of our reels to help you accomplish those goals.

Proven reeling solutions to AG & Pest Control needs!

Coxreels® has the broadest, most complete line of reels, perfectly suited to help you get the job done – efficiently and effectively. We got you covered!

- Pest Control (Insect or Mammals)
 - Chemical Spraying
- Inspect Buildings, Dwellings, and Grounds
- Agricultural Pest Control Spraying
 - Lawn Spraying
 - Skid Sprayer Units
 - Washdown / Pressure Washing
- General Landscaping
- Farming / Ranching
- High-Flow Watering
- Hydro Seeding
- Livestock Care
- Turf Care
- Fueling / DEF

Our versatile and wide reel selection handles various capacities and comes in different sizes to suit any agricultural or pest control requirement. Our standard reeling devices suggested in this catalog are already specified to meet the needs of the ag & pest control market. Coxreels also has the engineering power to design and build custom reels, so please consult the factory if you cannot locate a reel that will work with your equipment, we will be happy to assist you with a solution.

VALUE THE DIFFERENCE...

Make COXREELS your reel choice!



PROFESSIONAL GRADE FEATURES

A HIGHER LEVEL OF STANDARDS



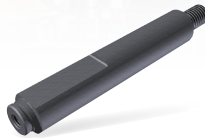
CPC™ POWDER COAT

Our blue powder coat finish is long lasting, chip resistant & rust inhibiting



BRASS SWIVEL

External fluid path, machined from solid brass, full flow, swivel for simple seal maintenance



STEEL AXLE

1" solid steel axle & lubricated bearings for extra strength & durability. Not a hollow tube & no fluid travels through it



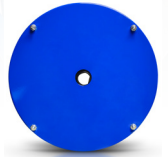
STEEL CONSTRUCTION

High-Quality steel construction provides superior strength and durability for heavy-duty applications in commercial and industrial settings



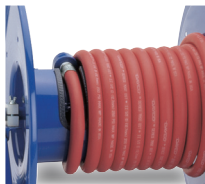
CNC SPUN DISCS

All steel rolled edges & ribbed discs for added safety, strength & durability



CARTRIDGE MOTOR

Enclosed factory tuned & matched cartridge style motor for safe & easy replacement



LOW PROFILE RISER

Low profile riser with open drum slot allows for smooth even hose wraps that will not pinch or bind your hose. **NO HUMP!**



ALL WELDED STEEL "A" FRAME

All welded steel "A" frame for strength & durability. **NOT BOLTED!**



USA MADE, QUALITY & SUPPORT

We take great pride in designing, building & supplying the world's finest reels made right here in the U.S.A.



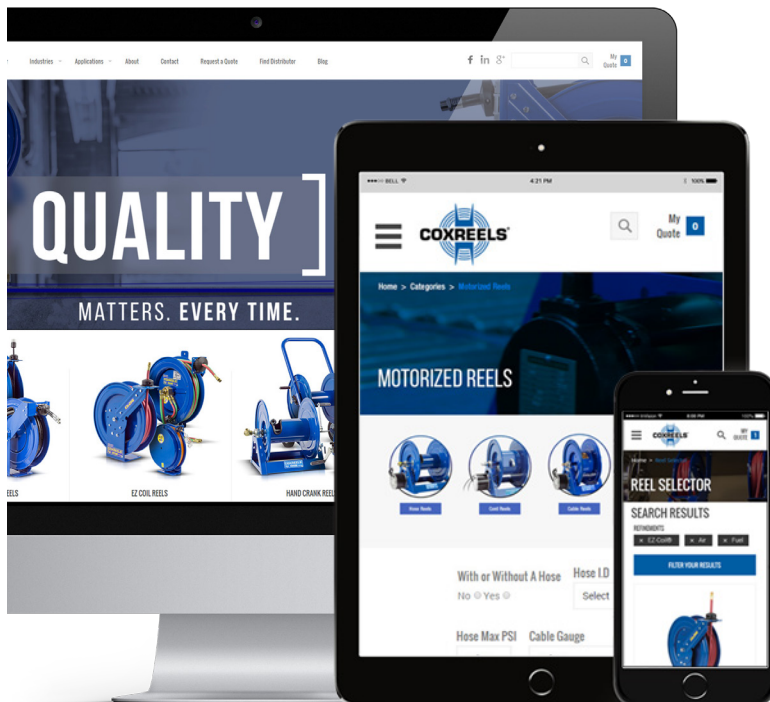
2 YEAR WARRANTY

Coxreels proudly stands behind our reels as they are built to last!



EZ-COIL® SERIES

A patented safety system that retracts up to 80% slower than conventional reels



VISIT US ONLINE

Coxreels is committed to providing our customers with the ultimate online experience as they navigate through the most complete and diverse line of hose, cord, and cable reels.

We hope that you enjoy the fresh look and feel of our updated website and find that this portal serves as a valuable resource for you!

FOLLOW US



www.coxreels.com • 1.800.COX.REEL

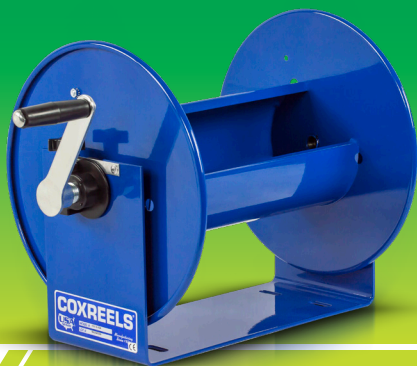
AGRICULTURAL | PEST CONTROL

3/8" I.D.

100 SERIES

COMPACT & PORTABLE HAND CRANK HOSE REELS

4,000 PSI



COXREELS® 100 Series hand crank hose reels are lightweight, compact, versatile reels that perform at working pressures up to 4,000 PSI. Save time and effort while increasing the safety of your work environment. The sturdy "U" shaped frame and all steel construction make this one tough little reel. CM Series "Caddy Mount" and DM Series "Dolly Mount" hand crank hose reels offer compact portability for long lengths of hose. Eliminate the task of manually coiling and uncoiling hose and easily transport it to the job site on wheels.

100 SERIES :: REEL SPECIFICATIONS

SWIVEL

- Fluid path with machined from solid brass 90° full-flow NPT swivel inlet
- Swivel Seals: VITON® - Optimum for pesticide and agriculture (available in NITRILE & EPDM)

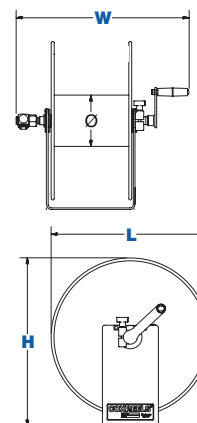
DESIGN & STRUCTURE

- Professional grade, compact & lightweight design
- Open drum design for no hassle hose wrap
- Solid one piece, heavy gauge steel "U" shaped frame
- Adjustable tension brake to prevent "free-wheeling" during operation, transport or storage
- 5 1/2" Drum - "Ø"
- Direct hand crank rewind

| 3/8" I.D. | 4,000 PSI |
|---------------------------------------|---|
| 5/8" O.D. Hose CAPACITY | MODEL |
| 50' (85 ft. of 1/4" hose) | 112-3-50-BVXX 14 1/2"W x 13"H x 12"L Shipping weight: 15 lbs. |
| 100' (150 ft. of 1/4" hose) | 112-3-100-BVXX 18 1/4"W x 13"H x 12"L Shipping weight: 19 lbs. |
| 150' (225 ft. of 1/4" hose) | 112-3-150-BVXX 23 3/4"W x 13"H x 12"L Shipping weight: 21 lbs. |
| 250' (350 ft. of 1/4" hose) | 117-3-250-BVXX 18 1/4"W x 18"H x 17"L Shipping weight: 30 lbs. |
| 400' (550 ft. of 1/4" hose) | 117-3-400-BVXX 22 3/4"W x 18"H x 17"L Shipping weight: 33 lbs. |
| 550' (800 ft. of 1/4" hose) | 117-3-550-BVXX 28 1/4"W x 18"H x 17"L Shipping weight: 35 lbs. |

LESS HOSE

| CM SERIES | DM SERIES |
|-----------|-----------|
| | |
| | |
| | |
| | |
| | |
| | |
| | |

VISIT: WWW.COXREELS.COM/TECH-SUPPORT FOR SPECIFIC DIMENSIONS

DM SERIES MOUNTING CART FRAME DOLLY MOUNT

- High quality three piece 1 1/4" steel tube frame structure
- Solid 8" rubber tires for easy transport
- Rubber front feet prevent reel from slipping forward
- Removable handle allow for compact storage

To order a 112-3-250 with dolly mount, simply suffix the option -DM to the model number

Example: 112-3-250-**DM**



CM SERIES MOUNTING TUBE FRAME CADDY MOUNT

- High quality one piece 1" steel tube frame structure
- Hose Control bar prevents hose from slipping off the discs
- Base has holes for temporary or permanent installation

To order a 112-3-250 with caddy mount, simply suffix the option -CM to the model number

Example: 112-3-250-**CM**



ADD ROLLERS

4-way enclosed pinch-proof stainless steel rollers are 1 in diameter supported by powder coated steel brackets. Weight: Add 10 lbs. to reel weight.

Change suffix to -BVCX

Example: 112-3-250-**BVCX**



UPGRADE TO ALL STAINLESS STEEL

Upgrade to a 1/2" model. Non-corrosive external fluid path with machined from high quality stainless steel 90° full-flow NPT swivel inlet. Electro-polished stainless steel finish. Swivel seals available in NITRILE Non-Toxic Food Grade Grease.

Add suffix -SS and change B to S to the model number

Example: 112-4-75-**SS-SVXX**

* Not all parts are Stainless Steel

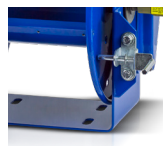


STRENGTHEN DRUM WITH BRAWNY OPTION

The Brawny feature closes the drum opening, increasing the drum strength to resist potential damage from hose constriction under increased or pulsing pressure usage.

Add prefix -BR to the model number

Example: **BR**-112-3-250-BVXX



ADD PINLOCK

The spring-loaded lock pin assembly is designed to lock & secure the reel, even in mobile conditions over rough terrain.

Add suffix -XXP to the end

Example: 112-3-250-BVXX-**XXP**



UPGRADE TO STAINLESS STEEL SWIVEL

Based on the upgraded medium pressure swivel, the stainless steel swivel is machined from solid 316 stainless steel and features increased wall thicknesses with upgraded seals and backup rings.

Change suffix second letter to G to the model number

Example: 112-3-250-**BGXX**



UPGRADE TO STAINLESS STEEL FLUID PATH

This options uses the same swivel as described in the stainless steel swivel upgrade and couples it to a upgraded 304 stainless steel plumbing axle to improve the corrosion resistance of the entire fluid path.

Change suffix second letter to B to the model number

Example: 112-3-250-**BBXX**

WARNING: Cancer and reproductive Harm – See page 19 for more information – www.P65Warning.ca.gov

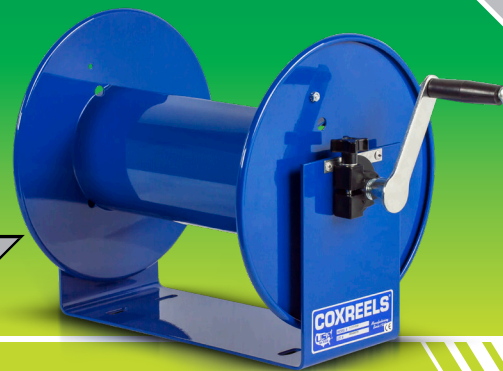
4,000 PSI

COMPACT & PORTABLE HAND CRANK HOSE REELS

100 SERIES

1/2" I.D.

COXREELS® 100 Series hand crank hose reels are lightweight, compact, versatile reels that perform at working pressures up to 4,000 PSI. Save time and effort while increasing the safety of your work environment. The sturdy "U" shaped frame and all steel construction make this one tough little reel. CM Series "Caddy Mount" and DM Series "Dolly Mount" hand crank hose reels offer compact portability for long lengths of hose. Eliminate the task of manually coiling and uncoiling hose and easily transport it to the job site on wheels.

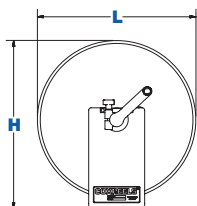
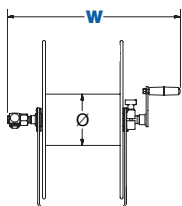


| 1/2" I.D. 7/8" O.D. Hose | | 4,000 PSI |
|---------------------------------------|--|-----------|
| CAPACITY | MODEL | |
| 75' (100 ft. of 3/8" hose) | 112-4-75-BVXX 23 3/4" W x 13" H x 12" L Shipping weight: 21 lbs. | |
| 225' (315 ft. of 3/8" hose) | 117-4-225-BVXX 22 3/4" W x 18" H x 17" L Shipping weight: 19 lbs. | |
| 350' (450 ft. of 3/8" hose) | 117-4-350-BVXX 28 1/4" W x 18" H x 17" L Shipping weight: 21 lbs. | |

LESS HOSE

| STAINLESS STEEL | CM SERIES | DM SERIES |
|-----------------|-----------|-----------|
| • | | |
| • | • | • |
| | | |

VISIT: WWW.COXREELS.COM/TECH-SUPPORT
FOR SPECIFIC DIMENSIONS



100 SERIES :: REEL SPECIFICATIONS

SWIVEL

- Fluid path with machined from solid brass 90° full-flow NPT swivel inlet
- Swivel Seals: VITON® - Optimum for pesticide and agriculture (available in NITRILE & EPDM)

DESIGN & STRUCTURE

- Professional grade, compact & lightweight design
- Open drum design for no hassle hose wrap
- Solid one piece, heavy gauge steel "U" shaped frame
- Adjustable tension brake to prevent "free-wheeling" during operation, transport or storage
- 5 1/2" Drum - "0"
- Direct hand crank rewind

DM SERIES

MOUNTING CART FRAME DOLLY MOUNT

- High quality three piece 1 1/4" steel tube frame structure
- Solid 8" rubber tires for easy transport
- Rubber front feet prevent reel from slipping forward
- Removable handle allow for compact storage

To order a 117-4-225 with dolly mount, simply suffix the option -DM to the model number

Example: 117-4-225-DM



CM SERIES

MOUNTING TUBE FRAME CADDY MOUNT

- High quality one piece 1" steel tube frame structure
- Hose Control bar prevents hose from slipping off the discs
- Base has holes for temporary or permanent installation

To order a 117-4-225 with caddy mount, simply suffix the option -CM to the model number

Example: 117-4-225-CM



ADD ROLLERS

4-way enclosed pinch-proof stainless steel rollers are 1 in diameter supported by powder coated steel brackets. Weight: Add 10 lbs. to reel weight.

Change suffix to -BVCX

Example: 117-4-225-BVCX



STRENGTHEN DRUM WITH BRAWNY OPTION

The Brawny feature closes the drum opening, increasing the drum strength to resist potential damage from hose constriction under increased or pulsing pressure usage.

Add prefix -BR to the model number

Example: BR-117-4-225-BVXX



UPGRADE TO STAINLESS STEEL SWIVEL

Based on the upgraded medium pressure swivel, the stainless steel swivel is machined from solid 316 stainless steel and features increased wall thicknesses with upgraded seals and backup rings.

Change suffix second letter to G to the model number

Example: 117-4-225-BGXX



UPGRADE TO ALL STAINLESS STEEL

Non-corrosive external fluid path with machined from high quality stainless steel 90° full-flow NPT swivel inlet. Electro-polished stainless steel finish. Swivel seals available in NITRILE Non-Toxic Food Grade Grease.

Add suffix -SS and change B to S to the model number

Example: 117-4-225-SS-SVXX

* Not all parts are Stainless Steel

ADD PINLOCK

The spring-loaded lock pin assembly is designed to lock & secure the reel, even in mobile conditions over rough terrain.

Add suffix -XXP to the end

Example: 117-4-225-BVXX-XXP

UPGRADE TO STAINLESS STEEL FLUID PATH

This options uses the same swivel as described in the stainless steel swivel upgrade and couples it to a upgraded 304 stainless steel plumbing axle to improve the corrosion resistance of the entire fluid path.

Change suffix second letter to B to the model number

Example: 117-4-225-BBXX



WARNING: Cancer and reproductive Harm – See page 19 for more information – www.P65Warning.ca.gov



www.coxreels.com • 1.800.COX.REEL

AGRICULTURAL | PEST CONTROL



5

HAND CRANK

1/2" I.D.

1125 SERIES

HAND CRANK & MOTOR DRIVEN HOSE REELS

5,000 PSI



COXREELS® 1125 Series hand crank and motorized hose reels have the features demanded by industry professionals. The industry preferred design features a sturdy one piece all welded "A" frame base, low profile outlet riser and open drum slot design provides a non-crimping, flat smooth hose wrap.

1125 SERIES :: REEL SPECIFICATIONS

SWIVEL

- Fluid path with machined from solid brass 90° full-flow NPT swivel inlet
- Swivel Seals: VITON® - Optimum for pesticide and agriculture (available in NITRILE & EPDM)

DESIGN & STRUCTURE

- All welded steel "A" frame construction for superior reel structure
- Exclusive low profile outlet riser & open drum slot design for flat smooth hose wrap
- Permanently lubricated self-aligning pillow block bearings for trouble-free & smooth rotation
- Adjustable tension brake to prevent "free-wheeling" during operation
- Long-handled locking pin to secure reel from rotation during transport or storage
- 6 1/4" Drum - "Ø"
- Solid steel direct hand crank with smooth round handle

1/2" I.D.

7/8" O.D. Hose

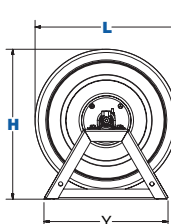
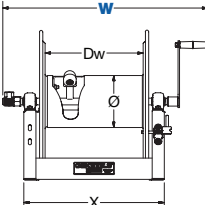
3,000 PSI

| CAPACITY | MODEL | Dw | Elec. Motor WxH | Air Motor WxH | Stainless Steel |
|---------------------------------------|--|-----|-----------------|---------------|-----------------|
| 100' (140 ft. of 3/8" hose) | 1125-4-100-BVXX 19 1/2"W x 18 3/4"H x 17 5/8"L Shipping weight: 36 lbs. | 6" | 19 3/4"x19 1/4" | 17"x19 1/4" | • |
| 200' (300 ft. of 3/8" hose) | 1125-4-200-BVXX 25 1/2"W x 18 3/4"H x 17 5/8"L Shipping weight: 39 lbs. | 12" | 25 3/4"x19 1/4" | 23"x19 1/4" | • |
| 325' (450 ft. of 3/8" hose) | 1125-4-325-BVXX 31 1/2"W x 18 3/4"H x 17 5/8"L Shipping weight: 48 lbs. | 18" | 31 3/4"x19 1/4" | 29"x19 1/4" | |
| 450' (625 ft. of 3/8" hose) | 1125-4-450-BVXX 37 1/2"W x 18 3/4"H x 17 5/8"L Shipping weight: 52 lbs. | 24" | 37 3/4"x19 1/4" | 35"x19 1/4" | |
| 500' (700 ft. of 3/8" hose) | 1125-4-500-BVXX 41 1/2"W x 18 3/4"H x 17 5/8"L Shipping weight: 58 lbs. | 28" | 41 3/4"x19 1/4" | 39"x19 1/4" | |

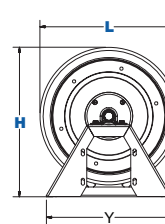
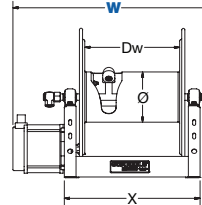
LESS HOSE

VISIT: WWW.COXREELS.COM/TECH-SUPPORT FOR SPECIFIC DIMENSIONS

1125 Series



1125 Motorized Series



4,000 PSI MEDIUM PRESSURE MODELS

Upgrade to 4000 PSI with Coxreels Medium pressure swivel. Precision machined from solid brass, the swivel features upgraded wall thickness and upgraded seals and backup rings.

Change prefix to -MP

Example: **MP1125-4-200-BVXX**

5,000 PSI HIGH PRESSURE MODELS

Upgrade to 5000 PSI with a steel ball bearing swivel. Machined from high strength steel and nickel plated for corrosion resistance, the ball bearing swivel features maximum flow and enhanced load bearing capabilities. Swivel Seals: AFLAS (Also available with VITON® seals adding suffix -BVXX)

Change prefix to -HP

Example: **HP1125-4-200**

UPGRADE TO ALL STAINLESS STEEL

Non-corrosive external fluid path with machined from high quality stainless steel 90° full-flow NPT swivel inlet. Electro-polished stainless steel finish "SS" or Standard unpolished "SP". Swivel seals available in NITRILE Non-Toxic Food Grade Grease.

Add suffix -SS and change B for S to the model number

Example: **1125-4-200-SS-SVXX**

* Not all parts are Stainless Steel

UPGRADE TO STAINLESS STEEL

STAINLESS STEEL SWIVEL (4000 PSI): Based on the upgraded medium pressure swivel, the stainless steel swivel is machined from solid 316 stainless steel and features increased wall thicknesses with upgraded seals and backup rings.

Change suffix second letter to G on the model number

Example: **1125-4-200-BGXX**

STAINLESS STEEL FLUID PATH: This option uses the same swivel as described in the stainless steel swivel upgrade and couples it to a upgraded 304 stainless steel plumbing axle to improve the corrosion resistance of the entire fluid path.

Change suffix second letter to B on the model number

Example: **1125-4-200-BBXX**

MOTORIZE THE REWIND OF YOUR REEL

Featuring a direct gear drive, the 1125 Series drive system is more dependable and maintenance free than a chain and sprocket. A solid steel ring gear is directly welded to the side of the disc for added rigidity and strength. Choose from several motor options shown in the table below.

Add the suffix letter after the hose capacity in the model number

Example: **1125-4-200-E-BVXX**

| SUFFIX | TYPE | DESCRIPTION | ADD ON LBS |
|-----------|-----------------------|---|------------|
| A | AIR - 4 VANE | ALUMINUM BODY AIR MOTOR | 8 |
| AB | AIR - 6 VANE | CAST IRON AIR MOTOR | 8 |
| C | FRONT HAND CRANK | BEVEL GEARED CRANK | 3 |
| E | 12 V DC, 1/3 HP | REVERSIBLE | 13 |
| ED | 12 V DC, 1/2 HP EXP. | EXPLOSION PROOF, REVERSIBLE | 26 |
| EF | 24 V DC, 1/3 HP | REVERSIBLE | 13 |
| EB | 24 V DC, 1/2 HP EXP. | EXPLOSION PROOF, REVERSIBLE | 26 |
| EA | 115 V AC, 1/2 HP EXP. | EXPLOSION PROOF REVERSIBLE AC RECTIFIED | 26 |
| EJ | 230 V AC, 1/2 HP EXP. | EXPLOSION PROOF REVERSIBLE AC RECTIFIED | 26 |
| H | HYDRAULIC | END PORTED 9/16-18 UNF | 6 |

SEE PAGE 18 FOR ADDITIONAL MOTOR ACCESSORIES

WARNING: Cancer and reproductive Harm – See page 19 for more information – www.P65Warning.ca.gov

5,000 PSI

ACCESSORIES

1125 SERIES

1/2" I.D.

**ADD 4-WAY ROLLERS**

4-way enclosed pinch-proof stainless steel rollers are 1 in diameter supported by powder coated steel brackets. Weight: Add 10 lbs. to reel weight.

For TOP Roller Change suffix to -BECX
Example: 1125-4-200-BVCX

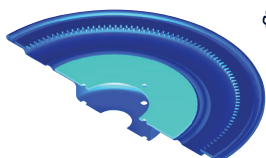
For BOTTOM Roller Change suffix to -BEFX
Example: 1125-4-200-BVFX

**ADD 3-WAY ROLLERS**

3-way open spool roller assembly with 1.5 chrome-plated machined steel spools & 1.5 stainless steel tubing bottom roller & powder coated steel brackets. Weight: Add 14 lbs. to reel weight.

For TOP Roller Change suffix to -BVEX
Example: 1125-4-200-BVEX

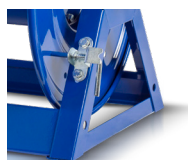
For BOTTOM Roller Change suffix to -BVHX
Example: 1125-4-200-BVHX

**STRENGTHEN DRUM WITH BRAWNY OPTION**

10 Gauge plates welded into each disc to keep them from bowing. Prevents deformations & eventual crushing of the drum that can be caused by hose pressure. The center drum has been thickened from 16GA to 14GA.

For 3,000 PSI models add prefix BX
Example: BX1125-4-200-BVXX

For 5,000 PSI models add prefix BH
Example: BH1125-4-200-BVXX

**ADD PINLOCK TO MOTORIZED MODELS**

The spring-loaded lock pin assembly is designed to lock & secure the reel, even in mobile conditions over rough terrain.

Add suffix -XXP to the end
Example: 1125-4-200-A-BVXX-XXP

**ADD HIGH TEMP DRAG BRAKE**

High temperature drag brake utilizes a metal band brake with Teflon PBI-Polyamide Glass Blend friction material to improve brake performance up to 600 F max.

To order ask for accessory:
7429-1-4

**PROTECT YOUR REEL WITH GEAR GUARDS**

For motorized models. Guards beveled gears or chain & sprocket from dirt and foreign matter, while also protecting operator from injury.

Add suffix -G after Motor suffix
Example: 1125-4-200-AG-BVXX

OPTIONAL MODEL UPGRADE & ADDITIONS

HOSE GUIDES

**Pivoting Hose Guide**

Heavy gauge powder coated steel arm & pivot mount w/5 locking positions. Stainless steel enclosed 4-way roller system & zinc plated axle for non-corrosive performance. Specify drum width. (For motor options E & ED only). Weight: 17 lbs.

**Sliding Hose Guide**

4-way, solid black delrin roller assembly, smooth tapered handle, non-corrosive zinc plated solid rods, heavy gauge "CPC" powder coated steel framing. Specify drum width. Weight: 8 lbs.

PART NO.

15733
Bottom Return

15732
Top Return

15734

1125 SERIES STACKING BRACKET

**Top Rewind**

Stack your 1125 Series reels for double the storage in the same work area. Powder coated crinkle black, steel construction. Weight 6 lbs.

PART NO.

7480

*Add drum width dimension as the suffix to the part number

EXAMPLE: An 1125-4-200 reel drum width is 12". Order part number: 7480-12

MODEL UPGRADES & ADDITIONS

**Wand Holder**

- Lightweight aluminum construction with black CPC™ powder finish.
- 24" long with a 1.6" diameter, ideal to store pressure washing guns & other spraying devices.
- Left, right, front & rear sides mount configuration.

PART NO.

15735

**Hose Strain Relief Kit**

- Allows the hose to be secured against the drum.
- The clamp provides a strain relief when the hose is fully extended from the reel.
- Allow the hose to be routed between the riser connection & the hose clamp with a proper bend radius.

HSRK-050

PORTABLE HOSE REEL CART

**Portable Cart**

Steel round handle detaches for compact storage. Steel front legs with rubber feet prevent sliding. High grade ball bearings with hardened cup. 1/2" diameter steel axle. Solid 8" rubber tires. For 8" semi-pneumatic tires order model with prefix PRP. Weight: 17 lbs.

PART NO.

PR-1125-6

1125-4-100

PRP-1125-6

1125-4-100

PR-1125-12

1125-4-200

PRP-1125-12

1125-4-200

**Carry Handles**

Easily bolts to "A" frame making the reel portable. 1" tube steel construction. Powder coated crinkle black. Weight: 8 lbs.

PR-1125-HC



www.coxreels.com • 1.800.COX.REEL

AGRICULTURAL | PEST CONTROL



WARNING: Cancer and reproductive Harm – See page 19 for more information – www.P65Warning.ca.gov

MOTORIZED

HAND CRANK

3/4" I.D.

1125 SERIES

HAND CRANK & MOTOR DRIVEN HOSE REELS

4,500 PSI



COXREELS® 1125 Series hand crank and motorized hose reels have the features demanded by industry professionals. The industry preferred design features a sturdy one piece all welded "A" frame base, low profile outlet riser and open drum slot design provides a non-crimping, flat smooth hose wrap.

1125 SERIES :: REEL SPECIFICATIONS

SWIVEL

- Fluid path with machined from solid brass 90° full-flow NPT swivel inlet
- Swivel Seals: VITON® - Optimum for pesticide and agriculture (available in NITRILE & EPDM)

DESIGN & STRUCTURE

- All welded steel "A" frame construction for superior reel structure
- Exclusive low profile outlet riser & open drum slot design for flat smooth hose wrap
- Permanently lubricated self-aligning pillow block bearings for trouble-free & smooth rotation
- Adjustable tension brake to prevent "free-wheeling" during operation
- Long-handled locking pin to secure reel from rotation during transport or storage
- 6 1/4" Drum - "Ø"
- Solid steel direct hand crank with smooth round handle

3/4" I.D.
1 1/4" O.D.

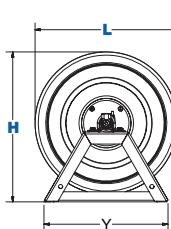
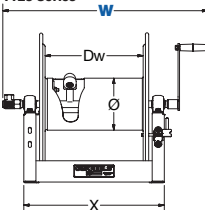
3,000 PSI

| CAPACITY | MODEL | Dw | Elec. Motor WxH | Air Motor WxH | Stainless Steel |
|---------------------------------------|--|-----|-----------------|-----------------|-----------------|
| 50' (100ft. of 1/2" hose) | 1125-5-50-BVXX 20 3/4"W x 18 3/4"H x 17 5/8"L Shipping weight: 38 lbs. | 6" | 20"x19 1/4" | 17 3/8"x19 1/4" | |
| 100' (200 ft. of 1/2" hose) | 1125-5-100-BVXX 26 3/4"W x 18 3/4"H x 17 5/8"L Shipping weight: 42 lbs. | 12" | 26"x19 1/4" | 23 3/8"x19 1/4" | • |
| 175' (325ft. of 1/2" hose) | 1125-5-175-BVXX 32 3/4"W x 18 3/4"H x 17 5/8"L Shipping weight: 50 lbs. | 18" | 32"x19 1/4" | 29 3/8"x19 1/4" | |
| 200' (450 ft. of 1/2" hose) | 1125-5-200-BVXX 38 3/4"W x 18 3/4"H x 17 5/8"L Shipping weight: 55 lbs. | 24" | 38"x19 1/4" | 35 3/8"x19 1/4" | • |
| 250' (500 ft. of 1/2" hose) | 1125-5-250-BVXX 42 3/4"W x 18 3/4"H x 17 5/8"L Shipping weight: 59 lbs. | 28" | 42"x19 1/4" | 39 3/8"x19 1/4" | |

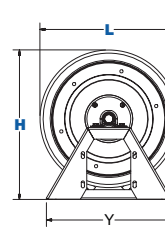
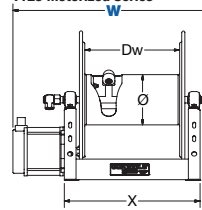
LESS HOSE

VISIT: WWW.COXREELS.COM/TECH-SUPPORT FOR SPECIFIC DIMENSIONS

1125 Series



1125 Motorized Series



4,500 PSI

HIGH PRESSURE MODELS

Upgrade to 4,500 PSI with a steel ball bearing swivel. Machined from high strength steel and nickel plated for corrosion resistance, the ball bearing swivel features maximum flow and enhanced load bearing capabilities. Swivel Seals: AFLAS (Also available with VITON® seals adding suffix -BVXX)

Change prefix to -HP

Example: **HP1125-5-100**

UPGRADE TO ALL STAINLESS STEEL

Non-corrosive external fluid path with machined from high quality stainless steel 90° full-flow NPT swivel inlet. Electro-polished stainless steel finish "SS" or Standard unpolished "SP". Swivel seals available in NITRILE Non-Toxic Food Grade Grease.

Add suffix -SS and change B for S to the model number

Example: **1125-5-100-SS-SVXX**

* Not all parts are Stainless Steel

UPGRADE TO STAINLESS STEEL

STAINLESS STEEL SWIVEL (4000 PSI): Based on the upgraded medium pressure swivel, the stainless steel swivel is machined from solid 316 stainless steel and features increased wall thicknesses with upgraded seals and backup rings.

Change suffix second letter to G on the model number

Example: **1125-5-100-BGXX**

STAINLESS STEEL FLUID PATH: This options uses the same swivel as described in the stainless steel swivel upgrade and couples it to a upgraded 304 stainless steel plumbing axle to improve the corrosion resistance of the entire fluid path.

Change suffix second letter to B on the model number

Example: **1125-5-100-BBXX**

MOTORIZE THE REWIND OF YOUR REEL

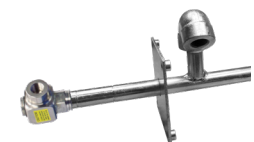
Featuring a direct gear drive, the 1125 Series drive system is more dependable and maintenance free than a chain and sprocket. A solid steel ring gear is directly welded to the side of the disc for added rigidity and strength. Choose from several motor options shown in the table below.

Add the suffix letter after the hose capacity in the model number

Example: **1125-5-100-E-BVXX**

| SUFFIX | TYPE | DESCRIPTION | ADD ON LBS |
|-----------|-----------------------|---|------------|
| A | AIR - 4 VANE | ALUMINUM BODY AIR MOTOR | 8 |
| AB | AIR - 6 VANE | CAST IRON AIR MOTOR | 8 |
| C | FRONT HAND CRANK | BEVEL GEARED CRANK | 3 |
| E | 12 V DC, 1/3 HP | REVERSIBLE | 13 |
| ED | 12 V DC, 1/2 HP EXP. | EXPLOSION PROOF, REVERSIBLE | 26 |
| EF | 24 V DC, 1/3 HP | REVERSIBLE | 13 |
| EB | 24 V DC, 1/2 HP EXP. | EXPLOSION PROOF, REVERSIBLE | 26 |
| EA | 115 V AC, 1/2 HP EXP. | EXPLOSION PROOF REVERSIBLE AC RECTIFIED | 26 |
| EJ | 230 V AC, 1/2 HP EXP. | EXPLOSION PROOF REVERSIBLE AC RECTIFIED | 26 |
| H | HYDRAULIC | END PORTED 9/16-18 UNF | 6 |

SEE PAGE 18 FOR ADDITIONAL MOTOR ACCESSORIES



WARNING: Cancer and reproductive Harm – See page 19 for more information – www.P65Warning.ca.gov

4,500 PSI

ACCESSORIES

1125 SERIES

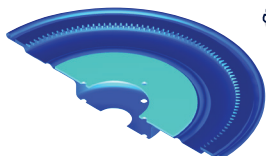
3/4" I.D.

**ADD 4-WAY ROLLERS**

4-way enclosed pinch-proof stainless steel rollers are 1 in diameter supported by powder coated steel brackets. Weight: Add 10 lbs. to reel weight.

For TOP Roller Change suffix to -BECX
Example: 1125-5-100-BVCX

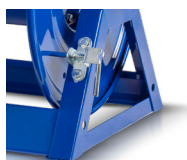
For BOTTOM Roller Change suffix to -BEFX
Example: 1125-5-100-BVFX

**STRENGTHEN DRUM WITH BRAWNY OPTION**

10 Gauge plates welded into each disc to keep them from bowing. Prevents deformations & eventual crushing of the drum that can be caused by hose pressure. The center drum has been thickened from 16GA to 14GA.

For 3,000 PSI models add prefix BX
Example: BX1125-5-100-BVXX

For 5,000 PSI models add prefix BH
Example: BH1125-5-100-BVXX

**ADD PINLOCK TO MOTORIZED MODELS**

The spring-loaded lock pin assembly is designed to lock & secure the reel, even in mobile conditions over rough terrain.

Add suffix -XXP to the end
Example: 1125-5-100-A-BVXX-XXP

**ADD 3-WAY ROLLERS**

3-way open spool roller assembly with 1.5 chrome-plated machined steel spools & 1.5 stainless steel tubing bottom roller & powder coated steel brackets. Weight: Add 14 lbs. to reel weight.

For TOP Roller Change suffix to -BVEX
Example: 1125-5-100-BVEX

For BOTTOM Roller Change suffix to -BVHX
Example: 1125-5-100-BVHX

**ADD HIGH TEMP DRAG BRAKE**

High temperature drag brake utilizes a metal band brake with Teflon PBI-Polyamide Glass Blend friction material to improve brake performance up to 600 F max.

To order ask for accessory:
7429-1-5

**PROTECT YOUR REEL WITH GEAR GUARDS**

For motorized models. Guards beveled gears or chain & sprocket from dirt and foreign matter, while also protecting operator from injury.

Add suffix -G after Motor suffix
Example: 1125-5-100-AG-BVXX

OPTIONAL MODEL UPGRADE & ADDITIONS

HOSE GUIDES

**Pivoting Hose Guide**

Heavy gauge powder coated steel arm & pivot mount w/5 locking positions. Stainless steel enclosed 4-way roller system & zinc plated axle for non-corrosive performance. Specify drum width. (For motor options E & ED only). Weight: 17 lbs.

**Sliding Hose Guide**

4-way, solid black delrin roller assembly, smooth tapered handle, non-corrosive zinc plated solid rods, heavy gauge "CPC" powder coated steel framing. Specify drum width. Weight: 8 lbs.

PART NO.

15733
Bottom Return

15732
Top Return

15734

1125 SERIES STACKING BRACKET

**Top Rewind**

Stack your 1125 Series reels for double the storage in the same work area. Powder coated crinkle black, steel construction. Weight 6 lbs.

PART NO.

7480

*Add drum width dimension as the suffix to the part number

EXAMPLE: An 1125-4-200 reel drum width is 12". Order part number: 7480-12

MODEL UPGRADES & ADDITIONS

**Wand Holder**

- Lightweight aluminum construction with black CPC™ powder finish.
- 24" long with a 1.6" diameter, ideal to store pressure washing guns & other spraying devices.
- Left, right, front & rear sides mount configuration.

PART NO.

15735

**Hose Strain Relief Kit**

- Allows the hose to be secured against the drum.
- The clamp provides a strain relief when the hose is fully extended from the reel.
- Allow the hose to be routed between the riser connection & the hose clamp with a proper bend radius.

HSRK-075

PORTABLE HOSE REEL CART

**Portable Cart**

Steel round handle detaches for compact storage. Steel front legs with rubber feet prevent sliding. High grade ball bearings with hardened cup. 1/2" diameter steel axle. Solid 8" rubber tires. For 8" semi-pneumatic tires order model with prefix PRP. Weight: 17 lbs.

PART NO.

PR-1125-6
1125-5-50

**Carry Handles**

Easily bolts to "A" frame making the reel portable. 1" tube steel construction. Powder coated crinkle black. Weight: 8 lbs.

PR-1125-HC

WARNING: Cancer and reproductive Harm – See page 19 for more information – www.P65Warning.ca.gov



www.coxreels.com • 1.800.COX.REEL

AGRICULTURAL | PEST CONTROL

9

MOTORIZED

HAND CRANK

1" I.D.

1125 SERIES

HAND CRANK & MOTOR DRIVEN HOSE REELS

3,000 PSI



COXREELS® 1125 Series hand crank and motorized hose reels have the features demanded by industry professionals. The industry preferred design features a sturdy one piece all welded "A" frame base, low profile outlet riser and open drum slot design provides a non-crimping, flat smooth hose wrap.

1125 SERIES :: REEL SPECIFICATIONS

SWIVEL

- External 90° full-flow NPT swivel with electroless nickel plated steel inlet
- Swivel Seals: VITON® - Optimum for pesticide and agriculture (available in NITRILE)

DESIGN & STRUCTURE

- All welded steel "A" frame construction for superior reel structure
- Exclusive low profile outlet riser & open drum slot design for flat smooth hose wrap
- Permanently lubricated self-aligning pillow block bearings for trouble-free & smooth rotation
- Adjustable tension brake to prevent "free-wheeling" during operation
- Long-handled locking pin to secure reel from rotation during transport or storage
- 8 1/4" Drum - "Ø"
- Solid steel direct hand crank with smooth round handle

1" I.D.
17/16" O.D.

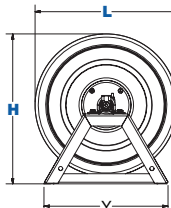
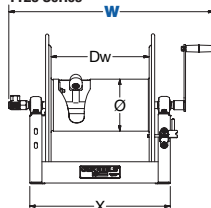
3,000 PSI

| CAPACITY | MODEL | Dw | Elec. Motor WxH | Air Motor WxH |
|---------------------------------------|--|---------|-----------------|-----------------|
| 35' (50ft. of 3/4" hose) | 1125-6-35-BVXX 26"W x 18 1/2"H x 17 5/8"L Shipping weight: 50 lbs. | 9 1/2" | 23 7/8"x19 1/8" | 22 1/4"x19 1/8" |
| 50' (75 ft. of 3/4" hose) | 1125-6-50-BVXX 32"W x 18 1/2"H x 17 5/8"L Shipping weight: 55 lbs. | 15 1/2" | 29 7/8"x19 1/8" | 28 1/4"x19 1/8" |
| 75' (120ft. of 3/4" hose) | 1125-6-75-BVXX 38 1/2"W x 18 1/2"H x 17 5/8"L Shipping weight: 62 lbs. | 22" | 36 3/8"x19 1/8" | 34 3/4"x19 1/8" |
| 100' (150 ft. of 3/4" hose) | 1125-6-100-BVXX 44 1/2"W x 18 1/2"H x 17 5/8"L Shipping weight: 55 lbs. | 28" | 42 3/8"x19 1/8" | 40 3/4"x19 1/8" |

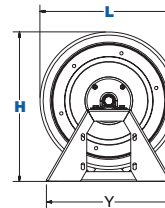
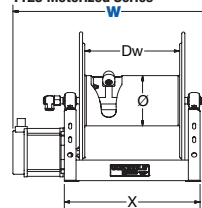
LESS HOSE

VISIT: WWW.COXREELS.COM/TECH-SUPPORT FOR SPECIFIC DIMENSIONS

1125 Series



1125 Motorized Series



UPGRADE TO STAINLESS STEEL



STAINLESS STEEL CAPTIVE BEARING SWIVEL: Featuring heavy duty ball bearings for smooth rotation and increased side load capabilities, the stainless steel swivel is machined from solid 304 stainless steel for increased corrosion resistance.

Swivel Seals: VITON® (Also available with AFLAS seals adding suffix -BJXX)

Change suffix second letter to G on the model number
Example: 1125-6-100-**BGXX**



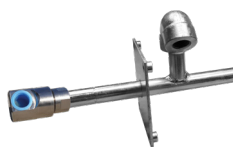
MOTORIZE THE REWIND OF YOUR REEL

Featuring a direct gear drive, the 1125 Series drive system is more dependable and maintenance free than a chain and sprocket. A solid steel ring gear is directly welded to the side of the disc for added rigidity and strength. Choose from several motor options shown in the table below.

Add the suffix letter after the hose capacity in the model number
Example: 1125-6-100-**E**-BVXX

| SUFFIX | TYPE | DESCRIPTION | ADD ON LBS |
|-----------|-----------------------|---|------------|
| A | AIR - 4 VANE | ALUMINUM BODY AIR MOTOR | 8 |
| AB | AIR - 6 VANE | CAST IRON AIR MOTOR | 8 |
| C | FRONT HAND CRANK | BEVEL GEARED CRANK | 3 |
| E | 12 V DC, 1/3 HP | REVERSIBLE | 13 |
| ED | 12 V DC, 1/2 HP EXP. | EXPLOSION PROOF, REVERSIBLE | 26 |
| EF | 24 V DC, 1/3 HP | REVERSIBLE | 13 |
| EB | 24 V DC, 1/2 HP EXP. | EXPLOSION PROOF, REVERSIBLE | 26 |
| EA | 115 V AC, 1/2 HP EXP. | EXPLOSION PROOF REVERSIBLE AC RECTIFIED | 26 |
| EJ | 230 V AC, 1/2 HP EXP. | EXPLOSION PROOF REVERSIBLE AC RECTIFIED | 26 |
| H | HYDRAULIC | END PORTED 3/16-18 UNF | 6 |

SEE PAGE 18 FOR ADDITIONAL MOTOR ACCESSORIES



STAINLESS STEEL FLUID PATH: This option uses the same swivel as described in the stainless steel captive bearing swivel upgrade and couples it to a upgraded 304 stainless steel plumbing axle to improve the corrosion resistance of the entire fluid path.

Swivel Seals: VITON® (Also available with AFLAS seals adding suffix -BAXX)

Change suffix second letter to B on the model number
Example: 1125-6-100-**BBXX**



WARNING: Cancer and reproductive Harm – See page 19 for more information – www.P65Warning.ca.gov



3,000 PSI

ACCESSORIES

1125 SERIES

1" I.D.

**ADD 4-WAY ROLLERS**

4-way enclosed pinch-proof stainless steel rollers are 1 in diameter supported by powder coated steel brackets. Weight: Add 10 lbs. to reel weight.

For TOP Roller Change suffix to -BECX
Example: 1125-6-100-BVCX

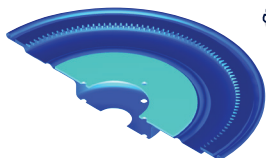
For BOTTOM Roller Change suffix to -BEFX
Example: 1125-6-100-BVFX

**ADD 3-WAY ROLLERS**

3-way open spool roller assembly with 1.5 chrome-plated machined steel spools & 1.5 stainless steel tubing bottom roller & powder coated steel brackets. Weight: Add 14 lbs. to reel weight.

For TOP Roller Change suffix to -BVEX
Example: 1125-6-100-BVEX

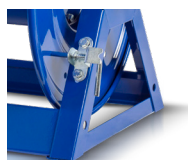
For BOTTOM Roller Change suffix to -BVHX
Example: 1125-6-100-BVHX

**STRENGTHEN DRUM WITH BRAWNY OPTION**

10 Gauge plates welded into each disc to keep them from bowing. Prevents deformations & eventual crushing of the drum that can be caused by hose pressure. The center drum has been thickened from 16GA to 14GA.

For 3,000 PSI models add prefix BX
Example: BX1125-6-100-BVXX

For 5,000 PSI models add prefix BH
Example: BH1125-6-100-BVXX

**ADD PINLOCK TO MOTORIZED MODELS**

The spring-loaded lock pin assembly is designed to lock & secure the reel, even in mobile conditions over rough terrain.

Add suffix -XXP to the end
Example: 1125-6-100-A-BVXX-XXP

**ADD HEAVY DUTY BAND BRAKE**

Steel band lined with brake friction material. Tension is adjusted with a wing nut or a knob by hand (no tools required). Increase braking power and brake life; easier and more precise brake adjustment (control).

Add suffix -K after Motor suffix
Example: 1125-6-100-AK-BVXX

**PROTECT YOUR REEL WITH GEAR GUARDS**

For motorized models. Guards beveled gears or chain & sprocket from dirt and foreign matter, while also protecting operator from injury.

Add suffix -G after Motor suffix
Example: 1125-6-100-AG-BVXX

OPTIONAL MODEL UPGRADE & ADDITIONS

HOSE GUIDES

**Pivoting Hose Guide**

Heavy gauge powder coated steel arm & pivot mount w/5 locking positions. Stainless steel enclosed 4-way roller system & zinc plated axle for non-corrosive performance. Specify drum width. (For motor options E & ED only). Weight: 17 lbs.

**Sliding Hose Guide**

4-way, solid black delrin roller assembly, smooth tapered handle, non-corrosive zinc plated solid rods, heavy gauge "CPC" powder coated steel framing. Specify drum width. Weight: 8 lbs.

PART NO.

15733
Bottom Return

15732
Top Return

15734

1125 SERIES STACKING BRACKET

**Top Rewind**

Stack your 1125 Series reels for double the storage in the same work area. Powder coated crinkle black, steel construction. Weight 6 lbs.

PART NO.

7480

*Add drum width dimension as the suffix to the part number

EXAMPLE: An 1125-4-200 reel drum width is 12". Order part number: 7480-12

MODEL UPGRADES & ADDITIONS

**Wand Holder**

- Lightweight aluminum construction with black CPC™ powder finish.
- 24" long with a 1.6" diameter, ideal to store pressure washing guns & other spraying devices.
- Left, right, front & rear sides mount configuration.

PART NO.

15735

**Hose Strain Relief Kit**

- Allows the hose to be secured against the drum.
- The clamp provides a strain relief when the hose is fully extended from the reel.
- Allow the hose to be routed between the riser connection & the hose clamp with a proper bend radius.

HSRK-0100

PORTABLE HOSE REEL CART

**Carry Handles**

Easily bolts to "A" frame making the reel portable. 1" tube steel construction. Powder coated crinkle black. Weight: 8 lbs.

PART NO.

PR-1125-HC

MOTORIZED

HAND CRANK

WARNING: Cancer and reproductive Harm – See page 19 for more information – www.P65Warning.ca.gov



www.coxreels.com • 1.800.COX.REEL

AGRICULTURAL | PEST CONTROL

11

1" I.D.

1175 SERIES

HAND CRANK & MOTOR DRIVEN HOSE REELS

3,000 PSI



COXREELS® 1125 Series hand crank and motorized hose reels have the features demanded by industry professionals. The industry preferred design features a sturdy one piece all welded "A" frame base, low profile outlet riser and open drum slot design provides a non-crimping, flat smooth hose wrap.

1175 SERIES :: REEL SPECIFICATIONS

SWIVEL

- Nickel plated steel 90° full-flow NPT swivel inlet
- Swivel Seals: AFLAS® (available in VITON® add suffix -BVXX)

DESIGN & STRUCTURE

- All welded steel "A" frame construction for superior reel structure
- Exclusive low profile outlet riser & open drum slot design for flat smooth hose wrap
- Permanently lubricated self-aligning pillow block bearings for trouble-free & smooth rotation
- Adjustable tension brake to prevent "free-wheeling" during operation
- Long-handled locking pin to secure reel from rotation during transport or storage
- 10 1/2" Drum - "Ø"
- Solid steel direct hand crank with smooth round handle



UPGRADE TO ALL STAINLESS STEEL

Non-corrosive external fluid path with machined from high quality stainless steel 90° full-flow NPT swivel inlet. Electro-polished stainless steel finish "SS" or Standard unpolished "SP". Swivel seals available in NITRILE Non-Toxic Food Grade Grease and VITON®.

Add suffix -SS and change B for S to the model number
Example: 1175-6-200-SS-SVXX

* Not all parts are Stainless Steel

UPGRADE TO STAINLESS STEEL

STAINLESS STEEL CAPTIVE BEARING SWIVEL: Featuring heavy duty ball bearings for smooth rotation and increased side load capabilities, the stainless steel swivel is machined from solid 304 stainless steel for increased corrosion resistance. Swivel Seals: AFLAS (Available in VITON®, add suffix -BGXX)

Change suffix second letter to J on the model number
Example: 1175-6-200-BJXX

STAINLESS STEEL FLUID PATH: This option uses the same swivel as described in the stainless steel captive bearing swivel upgrade and couples it to a upgraded 304 stainless steel plumbing axle to improve the corrosion resistance of the entire fluid path. Swivel Seals: AFLAS (Available in VITON®, add suffix -BBXX)

Change suffix second letter to A on the model number
Example: 1175-6-200-BAXX

1" I.D.

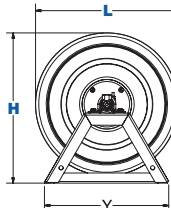
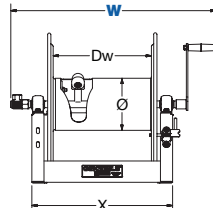
17/16" O.D. Hose

3,000 PSI

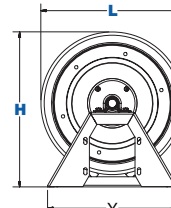
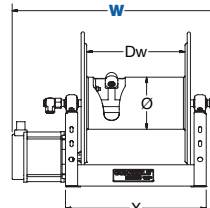
| CAPACITY | MODEL | Dw | Elec. Motor WxH | Air Motor WxH | Stainless Steel |
|---------------------------------------|---|---------|-----------------|-----------------|-----------------|
| 50' (100 ft. of 3/4" hose) | 1175-6-50 24 1/8"W x 26 1/8"H x 24"L Shipping weight: 67 lbs. | 7 1/2" | 22"x26 1/8" | 20 1/2"x26 1/8" | |
| 100' (150 ft. of 3/4" hose) | 1175-6-100 28 1/8"W x 26 1/8"H x 24"L Shipping weight: 70 lbs. | 11 1/2" | 26"x26 1/8" | 24 1/2"x26 1/8" | • |
| 125' (200 ft. of 3/4" hose) | 1175-6-125 30 1/8"W x 26 1/8"H x 24"L Shipping weight: 72 lbs. | 13 1/2" | 28"x26 1/8" | 26 1/2"x26 1/8" | |
| 135' (175 ft. of 3/4" hose) | 1175-6-135 32 1/8"W x 26 1/8"H x 24"L Shipping weight: 70 lbs. | 15 1/2" | 30"x26 1/8" | 28 1/2"x26 1/8" | |
| 150' (250 ft. of 3/4" hose) | 1175-6-150 36 5/8"W x 26 1/8"H x 24"L Shipping weight: 75 lbs. | 20" | 34 1/2"x26 1/8" | 33"x26 1/8" | |
| 200' (300 ft. of 3/4" hose) | 1175-6-200 36 5/8"W x 22"H x 20"L Shipping weight: 83 lbs. | 20" | 34 1/2"x22 7/8" | 33"x22 7/8" | • |

VISIT: WWW.COXREELS.COM/TECH-SUPPORT FOR SPECIFIC DIMENSIONS

1175 Series



1175 Series - Motorized



MOTORIZE THE REWIND OF YOUR REEL

Featuring a lubricated chain and a zinc plated steel sprocket, the 1175 Series drive system provides a smooth, continuous rewind on motorized reels. Choose from several motor options shown in the table below.

Add the suffix letter after the hose capacity in the model number

Example: 1175-4-200-E

| SUFFIX | TYPE | DESCRIPTION | ADD ON LBS |
|-----------|-----------------------|---|------------|
| A | AIR - 4 VANE | ALUMINUM BODY AIR MOTOR | 8 |
| AB | AIR - 6 VANE | CAST IRON AIR MOTOR | 8 |
| C | FRONT HAND CRANK | BEVEL GEARED CRANK | 3 |
| E | 12 V DC, 1/3 HP | REVERSIBLE | 13 |
| ED | 12 V DC, 1/2 HP EXP. | EXPLOSION PROOF, REVERSIBLE | 26 |
| EF | 24 V DC, 1/3 HP | REVERSIBLE | 13 |
| EB | 24 V DC, 1/2 HP EXP. | EXPLOSION PROOF, REVERSIBLE | 26 |
| EA | 115 V AC, 1/2 HP EXP. | EXPLOSION PROOF REVERSIBLE AC RECTIFIED | 26 |
| EJ | 230 V AC, 1/2 HP EXP. | EXPLOSION PROOF REVERSIBLE AC RECTIFIED | 26 |
| H | HYDRAULIC | END PORTED 3/16-18 UNF | 6 |

SEE PAGE 18 FOR ADDITIONAL MOTOR ACCESSORIES



WARNING: Cancer and reproductive Harm – See page 19 for more information – www.P65Warning.ca.gov



3,000 PSI

ACCESSORIES

1175 SERIES

1" I.D.



ADD 4-WAY ROLLERS

4-way enclosed pinch-proof stainless steel rollers are 1 in diameter supported by powder coated steel brackets. Weight: Add 10 lbs. to reel weight.

For TOP Roller Add suffix to -BXCX
Example: 1175-6-200-BXCX

For BOTTOM Roller Add suffix to -BFXH
Example: 1175-6-200-BFXH

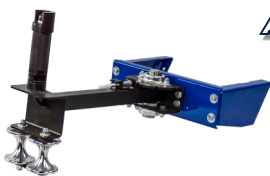


ADD 3-WAY ROLLERS

3-way open spool roller assembly with 1.5 chrome-plated machined steel spools & 1.5 stainless steel tubing bottom roller & powder coated steel brackets. Weight: Add 14 lbs. to reel weight.

For TOP Roller Add suffix to -BXEX
Example: 1175-6-200-BXEX

For BOTTOM Roller Add suffix to -BXHX
Example: 1175-6-200-BXHX



ADD PIVOTING HOSE GUIDE

Heavy gauge powder coated steel arm and pivot mount w/5 locking positions. Large 1" diameter pivot shaft. Sealed precision bearings support pivot shaft and chrome-plated billet aluminium guide rollers. (For motor options E & EF only)

To order specify drum with and ask for accessory

15728 - Bottom Return

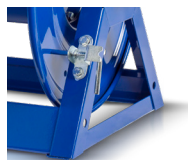
15729 - Top Return



ADD HEAVY DUTY BAND BRAKE

Steel band lined with brake friction material. Tension is adjusted with a wing nut or a knob by hand (no tools required). Increase braking power and brake life; easier and more precise brake adjustment (control).

Add suffix -K after Motor suffix
Example: 1175-6-200-AK-BVXX



ADD PINLOCK TO MOTORIZED MODELS

The spring-loaded lock pin assembly is designed to lock & secure the reel, even in mobile conditions over rough terrain.

Add suffix -XXP to the end
Example: 1175-6-200-A-BXXX-XXP



PROTECT YOUR REEL WITH GEAR GUARDS

For motorized models. Guards chain & sprocket from dirt and foreign matter, while also protecting operator from injury.

Add suffix -G after Motor suffix
Example: 1175-6-200-AG



ADD HOSE STRAIN RELIEF

- Allows the hose to be secured against the drum.
- The clamp provides a strain relief when the hose is fully extended from the reel.
- Allow the hose to be routed between the riser connection & the hose clamp with a proper bend radius.

To order ask for accessory
HSRK-100



ADD BEVEL CRANK HANDLE HOLSTER

Universal design mounts to either side of the reel with independent mounting holes. Features chained retaining pin to keep handle in place. Only available on bevel cranked models.

Add suffix -XXH to the end
Example: 1175-6-200-C-BXXX-XXH

OPTIONAL MODEL UPGRADE & ADDITIONS

PORTABLE HOSE REEL CART



Portable Cart

Steel round handle detaches for compact storage. Steel front legs with rubber feet prevent sliding. High grade ball bearings with hardened cup. 1/2" diameter steel axle. Solid 8" rubber tires. For 8" semi-pneumatic tires order model with prefix PRP. Weight: 17 lbs.

| PART NO. |
|---------------------------|
| PR-1175-11 1175-6-100 |
| PRP-1175-11 1175-6-100 |
| PR-1175-15 1175-6-150 |
| PRP-1175-15 1175-6-150 |

WARNING: Cancer and reproductive Harm – See page 19 for more information – www.P65Warning.ca.gov



www.coxreels.com • 1.800.COX.REEL

AGRICULTURAL | PEST CONTROL

13

MOTORIZED

HAND CRANK

1 1/2" I.D.

1185 SERIES

LARGE CAPACITY/VOLUME HOSE REELS**3,000 PSI**

COXREELS® 1185 Series hand crank and motor driven hose reels are designed to handle long lengths of large diameter hose for increased volume delivery. Coxreels' exclusive low profile outlet riser and open drum design provide a noncrimping, flat smooth hose wrap. The sturdy all welded "A" frame base provides exceptional strength to handle the extra weight without sacrificing performance, even in demanding mobile applications.

1185 SERIES :: REEL SPECIFICATIONS

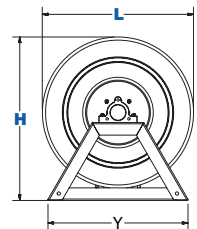
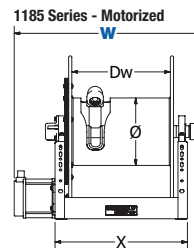
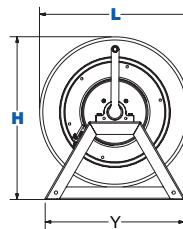
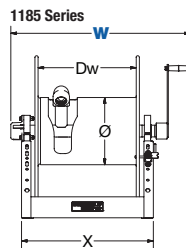
SWIVEL

- In-line electroless nickel plated steel full-flow NPT swivel inlet
- Swivel Seals: VITON® - Optimum for pesticide and agriculture (available in NITRILE)

DESIGN & STRUCTURE

- All welded steel "A" frame construction for superior reel structure
- Exclusive low profile outlet riser & open drum slot design for flat smooth hose wrap
- Robust lubricated horizontal surface mount bearings for easy rotation
- Long-handled locking pin to secure reel from rotation during transport or storage
- Solid steel direct hand crank with smooth round handle
- 10 1/2" Drum - "Ø"

| 1-1/2" I.D. 2 1/16" O.D. Hose | | 1,500 PSI | | |
|---|--|-----------|-----------------|-----------------|
| CAPACITY | MODEL | Dw | Elec. Motor WxH | Air Motor WxH |
| 50' (75 ft. of 1 1/4" hose) | 1185-1124-BVXX 25"W x 26"H x 24"L Shipping weight: 76 lbs. | 11 1/2" | 26 1/8"x26" | 23 1/3"x26" |
| 75' (100 ft. of 1 1/4" hose) | 1185-1524-BVXX 29"W x 26"H x 24"L Shipping weight: 81 lbs. | 15 1/2" | 30 1/8"x26" | 27 3/8"x26" |
| 70' (80 ft. of 1 1/4" hose) | 1185-2020-BBVXX 33 1/2"W x 21 5/8"H x 20"L Shipping weight: 70 lbs. | 20" | 34 5/8"x21 5/8" | 31 7/8"x21 5/8" |
| 100' (125 ft. of 1 1/4" hose) | 1185-2024-BVXX 33 1/2"W x 26"H x 24"L Shipping weight: 94 lbs. | 20" | 34 5/8"x26" | 31 7/8"x26" |
| 125' (180 ft. of 1 1/4" hose) | 1185-2028-BVXX 33 1/2"W x 30"H x 28"L Shipping weight: 109 lbs. | 20" | 34 5/8"x30" | 31 7/8"x30" |
| 150' (220 ft. of 1 1/4" hose) | 1185-2528-BVXX 38 1/2"W x 30"H x 28"L Shipping weight: 122 lbs. | 25" | 39 5/8"x30" | 36 7/8"x30" |
| 175' (225 ft. of 1 1/4" hose) | 1185-2528-BVXX 46 1/2"W x 26"H x 24"L Shipping weight: 154 lbs. | 33" | 47 5/8"x26" | 44 7/8"x26" |
| 250' (325 ft. of 1 1/4" hose) | 1185-2528-BVXX 46 1/2"W x 30"H x 28"L Shipping weight: 169 lbs. | 33" | 47 5/8"x30" | 44 7/8"x30" |

VISIT: WWW.COXREELS.COM/TECH-SUPPORT FOR SPECIFIC DIMENSIONS

3,000 PSI

HIGH PRESSURE MODELS

Upgrade to 3,000 PSI with a steel ball bearing swivel. Machined from high strength steel and nickel plated for corrosion resistance, the ball bearing swivel features maximum flow and enhanced load bearing capabilities. Swivel Seals: AFLAS (Also available with VITON® seals adding suffix -BWXX)
Change prefix to -BUXX

Example: 1185-1124-BUXX

UPGRADE TO STAINLESS STEEL

STAINLESS STEEL CAPTIVE BEARING SWIVEL / STAINLESS STEEL IN-LINE SWIVEL: the stainless steel swivel is machined from solid 304 stainless steel for increased corrosion resistance.

Change suffix second letter to G on the model number
Example: 1185-1124-BGXX

STAINLESS STEEL FLUID PATH: This option uses the same swivel as described in the stainless steel swivel upgrade options and couples it to a upgraded 304 stainless steel plumbing axle to improve the corrosion resistance of the entire fluid path.

Change suffix second letter to B on the model number
Example: 1185-1124-BBXX



MOTORIZE THE REWIND OF YOUR REEL

Featuring a lubricated chain and a zinc plated steel sprocket, the 1185 Series drive system provides a smooth, continuous rewind on motorized reels. Choose from several motor options shown in the table below.

Add the suffix letter after the hose capacity in the model number
Example: 1185-1124-E-BVXX

| SUFFIX | TYPE | DESCRIPTION | ADD ON LBS |
|-----------|-----------------------|---|------------|
| A | AIR - 4 VANE | ALUMINUM BODY AIR MOTOR | 8 |
| AB | AIR - 6 VANE | CAST IRON AIR MOTOR | 8 |
| C | FRONT HAND CRANK | BEVEL GEARED CRANK | 3 |
| E | 12 V DC, 1/3 HP | REVERSIBLE | 13 |
| ED | 12 V DC, 1/2 HP EXP. | EXPLOSION PROOF, REVERSIBLE | 26 |
| EF | 24 V DC, 1/3 HP | REVERSIBLE | 13 |
| EB | 24 V DC, 1/2 HP EXP. | EXPLOSION PROOF, REVERSIBLE | 26 |
| EA | 115 V AC, 1/2 HP EXP. | EXPLOSION PROOF REVERSIBLE AC RECTIFIED | 26 |
| EJ | 230 V AC, 1/2 HP EXP. | EXPLOSION PROOF REVERSIBLE AC RECTIFIED | 26 |
| H | HYDRAULIC | END PORTED 3/16-18 UNF | 6 |

SEE PAGE 11 FOR ADDITIONAL MOTOR ACCESSORIES

WARNING: Cancer and reproductive Harm – See page 19 for more information – www.P65Warning.ca.gov

3,000 PSI

ACCESSORIES

1185 SERIES

1 1/2" I.D.



ADD 4-WAY ROLLERS

4-way enclosed pinch-proof stainless steel rollers are 1 in diameter supported by powder coated steel brackets. Weight: Add 10 lbs. to reel weight.

For TOP Roller Add suffix to -BVDX

Example: 1185-1124-BVDX

For BOTTOM Roller Add suffix to -BXFX

Example: 1185-1124-BVGX



ADD 3-WAY ROLLERS

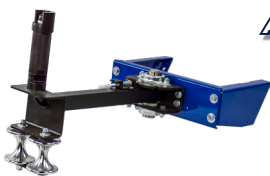
3-way open spool roller assembly with 1.5 chrome-plated machined steel spools & 1.5 stainless steel tubing bottom roller & powder coated steel brackets. Weight: Add 14 lbs. to reel weight.

For TOP Roller Add suffix to -BVEX

Example: 1185-1124-BVEX

For BOTTOM Roller Add suffix to -BVHX

Example: 1185-1124-BVHX



ADD PIVOTING HOSE GUIDE

Heavy gauge powder coated steel arm and pivot mount w/5 locking positions. Large 1" diameter pivot shaft. Sealed precision bearings support pivot shaft and chrome-plated billet aluminium guide rollers. (For motor options E & EF only)

To order specify drum with and ask for accessory

15728 - Bottom Return

15730 - Top Return

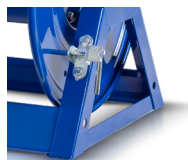


ADD HEAVY DUTY BAND BRAKE

Steel band lined with brake friction material. Tension is adjusted with a wing nut or a knob by hand (no tools required). Increase braking power and brake life; easier and more precise brake adjustment (control).

Add suffix -K after Motor suffix

Example: 1185-1124-AK-BVXX



ADD PINLOCK TO MOTORIZED MODELS

The spring-loaded lock pin assembly is designed to lock & secure the reel, even in mobile conditions over rough terrain.

Add suffix -XXP to the end

Example: 1185-1124-A-BVXX-XXP



PROTECT YOUR REEL WITH GEAR GUARDS

For motorized models. Guards chain & sprocket from dirt and foreign matter, while also protecting operator from injury.

Add suffix -G after Motor suffix

Example: 1185-1124-AG-BVXX



ADD HOSE STRAIN RELIEF

- Allows the hose to be secured against the drum.
- The clamp provides a strain relief when the hose is fully extended from the reel.
- Allow the hose to be routed between the riser connection & the hose clamp with a proper bend radius.

To order ask for accessory

HSRK-150



ADD BEVEL CRANK HANDLE HOLSTER

Universal design mounts to either side of the reel with independent mounting holes. Features chained retaining pin to keep handle in place.

Add suffix -XXH to the end

Example: 1185-1124-C-BXXX-XXH

MOTORIZED

HAND CRANK

WARNING: Cancer and reproductive Harm – See page 19 for more information – www.P65Warning.ca.gov



www.coxreels.com • 1.800.COX.REEL

AGRICULTURAL | PEST CONTROL

15

2" I.D.

1195 SERIES

LARGE CAPACITY/VOLUME HOSE REELS

1,500 PSI



COXREELS® 1195 Series motor driven hose reels are designed to handle long lengths of large diameter hose for increased volume delivery. Coxreels' exclusive low profile outlet riser and open drum design provide a noncrimping, flat smooth hose wrap. The sturdy all welded "A" frame base provides exceptional strength to handle the extra weight without sacrificing performance, even in demanding mobile applications.

1195 SERIES :: REEL SPECIFICATIONS

SWIVEL

- In-line electroless nickel plated steel full-flow NPT swivel inlet
- Swivel Seals: VITON® - Optimum for pesticide and agriculture (available in NITRILE)

DESIGN & STRUCTURE

- All welded steel "A" frame construction for superior reel structure
- Exclusive low profile outlet riser & open drum slot design for flat smooth hose wrap
- Robust lubricated horizontal surface mount bearings for easy rotation
- Adaptor for Victaulic connections available, consult factory
- Idler Gears on electric rewind models to reduce drum speed and increase torque. Default ratio: 1:3. Available in three sizes, consult factory.
- (On models with suffix -C) Bevel geared crank rewind
- 15 1/2" Drum - "Ø"



1,500 PSI HIGH PRESSURE MODELS

Upgrade to 1,500 PSI with a steel ball bearing swivel. Machined from high strength steel and nickel plated for corrosion resistance, the ball bearing swivel features maximum flow and enhanced load bearing capabilities. Swivel Seals: AFLAS (Also available with VITON® seals adding suffix -BWXX)
Change prefix to -BUXX

Example: 1195-932-C-BUXX

UPGRADE TO STAINLESS STEEL

STAINLESS STEEL CAPTIVE BEARING SWIVEL / STAINLESS STEEL IN-LINE SWIVEL: the stainless steel swivel is machined from solid 304 stainless steel for increased corrosion resistance.

Change suffix second letter to G on the model number
Example: 1195-932-C-BGXX

STAINLESS STEEL FLUID PATH: This options uses the same swivel as described in the stainless steel swivel upgrade options and couples it to a upgraded 304 stainless steel plumbing axle to improve the corrosion resistance of the entire fluid path.

Change suffix second letter to B on the model number

Example: 1195-932-C-BBXX

IDLER GEARS AVAILABLE

Reduce drum speed & increase torque. Available in three sizes : 1:2 ratio, 1:3 ratio, and 1:4 ratio, they are factory installed on the motor kits.

Change motor suffix V3 for the ratio desired on the model number
Example: 1195-932-EAV4-BVXX



WARNING: Cancer and reproductive Harm – See page 19 for more information – www.P65Warning.ca.gov

16 AGRICULTURAL | PEST CONTROL

www.coxreels.com • 1.800.COX.REEL


1,000 PSI

2" I.D.

29/16" O.D. Hose

| CAPACITY | MODEL | Dw | Elec. Motor WxH | Air Motor WxH |
|--|--|---------|-----------------|-----------------|
| 50' (60 ft. of 1 1/2" hose) | 1195-932-X-BVXX 17 7/8"W x 33 1/4"H x 32"L Shipping weight: 128 lbs. | 9 1/2" | 22 1/8"x33 1/4" | 19 3/8"x33 1/4" |
| 60' (85 ft. of 1 1/2" hose) | 1195-1728-X-BVXX 25 7/8"W x 30 1/4"H x 28"L Shipping weight: 134 lbs. | 17 1/2" | 30 1/8"x30 1/4" | 27 3/8"x33 1/4" |
| 75' (100ft. of 1 1/2" hose) | 1195-1332-X-BVXX 21 7/8"W x 33 1/4"H x 32"L Shipping weight: 148 lbs. | 13 1/2" | 26 1/8"x33 1/4" | 23 3/8"x33 1/4" |
| 90' (135ft. of 1 1/2" hose) | 1195-2428-X-BVXX 32 3/8"W x 30 1/4"H x 28"L Shipping weight: 169 lbs. | 24" | 36 5/8"x30 1/4" | 33 7/8"x30 1/4" |
| 115' (150ft. of 1 1/2" hose) | 1195-2032-X-BVXX 38 1/2"W x 33 1/4"H x 32"L Shipping weight: 186 lbs. | 20" | 32 5/8"x33 1/4" | 29 7/8"x33 1/4" |
| 125' (175ft. of 1 1/2" hose) | 1195-3228-X-BVXX 40 3/8"W x 30 1/4"H x 28"L Shipping weight: 122 lbs. | 32" | 44 5/8"x28" | 41 7/8"x28" |

LESS HOSE



SUFFIX OPTIONS FOR YOUR REEL

These models are not available in direct crank models. Featuring a lubricated chain and a zinc plated steel sprocket, the 1195 Series drive system provides a smooth, continuous rewind on motorized reels.

Select from the options below to substitute the "X" with.

Example: 1195-932-EAV3-BVXX

| SUFFIX | TYPE | DESCRIPTION | ADD ON LBS |
|-------------|---------------------------|--|------------|
| AB | AIR - 6 VANE | CAST IRON AIR MOTOR | 8 |
| C | FRONT HAND CRANK | BEVEL GEARED CRANK | 3 |
| EDV3 | 12 V DC, 1/2 HP EXP. 1:3 | EXPLOSION PROOF, REVERSIBLE, IDLER | 13 |
| EBV3 | 24 V DC, 1/2 HP EXP. 1:3 | EXPLOSION PROOF, REVERSIBLE, IDLER | 26 |
| EAV3 | 115 V AC, 1/2 HP EXP. 1:3 | EXPLOSION PROOF REVERSIBLE AC RECTIFIED, IDLER | 13 |
| EJV3 | 230 V AC, 1/2 HP EXP. 1:3 | EXPLOSION PROOF REVERSIBLE AC RECTIFIED, IDLER | 26 |
| H | HYDRAULIC | END PORTED 9/16-18 UNF | 6 |

SEE PAGE 18 FOR ADDITIONAL MOTOR ACCESSORIES

ADD 4-WAY ROLLERS

4-way enclosed pinch-proof stainless steel rollers are 1 in diameter supported by powder coated steel brackets. Weight: Add 10 lbs. to reel weight.

For TOP Roller Change suffix to -BVCX

Example: 1195-932-C-BVCX

For BOTTOM Roller Change suffix to -BVFX

Example: 1195-932-C-BVFX

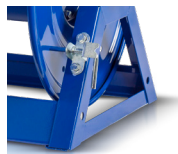


ADD PINLOCK TO MOTORIZED MODELS

The spring-loaded lock pin assembly is designed to lock & secure the reel, even in mobile conditions over rough terrain.

Add suffix -XXP to the end

Example: 1195-932-H-BVXX-XXP



MOTORIZED

HAND CRANK

3,000 PSI

1275 SERIES

1/2" - 1" I.D.

COXREELS® 1275 Series "Dual Hose" hand crank or motorized hose reels are designed for large capacity applications. This series features dual plumbing with two swivel inlets and two low profile outlets that compliment the open drum slot and provide a non-crimping, flat smooth hose wrap. The industry preferred one piece all welded "A" frame design adds rigidity and strength while the positive gear drive rewind assures consistent trouble-free performance.



1275 SERIES:: REEL SPECIFICATIONS

| 1/2" I.D. 7/8" O.D. Hose | | 3,000 PSI | | |
|---|--|-----------|-----------------|-----------------|
| CAPACITY | MODEL | Dw | Elec. Motor WxH | Air Motor WxH |
| 2/50' (2/70 ft. of 3/8" hose) | 1275-4-50-X-BVXX 18 7/8"W x 18 5/8"H x 17 5/8"L Shipping weight: 40lbs. | 8" | 22 5/8"x19 1/8" | 19 7/8"x19 1/8" |
| 2/100' (2/140 ft. of 3/8" hose) | 1275-4-100-X-BVXX 22 7/8"W x 18 5/8"H x 17 5/8"L Shipping weight: 42 lbs. | 12" | 26 5/8"x19 1/8" | 23 7/8"x19 1/8" |
| 2/150' (2/200 ft. of 3/8" hose) | 1275-4-150-X-BVXX 28 7/8"W x 18 5/8"H x 17 5/8"L Shipping weight: 47lbs. | 18" | 32 5/8"x19 1/8" | 29 7/8"x19 1/8" |
| 2/200' (2/300 ft. of 3/8" hose) | 1275-4-200-X-BVXX 34 7/8"W x 18 5/8"H x 17 5/8"L Shipping weight: 56 lbs. | 24" | 38 5/8"x19 1/8" | 35 7/8"x19 1/8" |

| 1" I.D. 1 1/16" O.D. Hose | | 3,000 PSI | | |
|---|---|-----------|-----------------|------------------|
| CAPACITY | MODEL | Dw | Elec. Motor WxH | Air Motor WxH |
| 2/50' (2/60 ft. of 3/4" hose) | 1275-6-50-X-BVXX 29"W x 22 7/8"H x 20"L Shipping weight: 63lbs. | 13 1/2" | 30 5/8"x22 7/8" | 27 3/4"x22 7/8" |
| 2/75' (2/110 ft. of 3/4" hose) | 1275-6-75-X-BVXX 29"W x 26 1/8"H x 24"L Shipping weight: 68 lbs. | 13 1/2" | 30 5/8"x26 1/8" | 27 3/4"x26 1/8" |
| 2/100' (2/155 ft. of 3/4" hose) | 1275-6-100-X-BVXX 35 5/8"W x 26 1/8"H x 24"L Shipping weight: 74 lbs. | 20" | 37"x26 1/8" | 34 1/4"x26 1/8" |
| 2/150' (2/200 ft. of 3/4" hose) | 1275-6-150-X-BVXX 35 5/8"W x 30 1/16"H x 28"L Shipping weight: 88 lbs. | 20" | 37"x30 1/16" | 34 1/4"x30 1/16" |

VISIT: WWW.COXREELS.COM/TECH-SUPPORT FOR SPECIFIC DIMENSIONS

SUFFIX OPTIONS FOR YOUR REEL

These models are not available in direct crank models. Featuring a direct gear drive, the 1275 Series drive system is more dependable and maintenance free than a chain and sprocket. A solid steel ring gear is directly welded to the side of the disc for added rigidity and strength.

Select from the options below to substitute the "X" with.

Example: 1275-650-E-BVXX

| SUFFIX | TYPE | DESCRIPTION | ADD ON LBS |
|-----------|-----------------------|---|------------|
| A | AIR - 4 VANE | ALUMINUM BODY AIR MOTOR | 8 |
| AB | AIR - 6 VANE | CAST IRON AIR MOTOR | 8 |
| C | FRONT HAND CRANK | BEVEL GEARED CRANK | 3 |
| E | 12 V DC, 1/3 HP | REVERSIBLE | 13 |
| ED | 12 V DC, 1/2 HP EXP. | EXPLOSION PROOF, REVERSIBLE | 26 |
| EF | 24 V DC, 1/3 HP | REVERSIBLE | 13 |
| EB | 24 V DC, 1/2 HP EXP. | EXPLOSION PROOF, REVERSIBLE | 26 |
| EA | 115 V AC, 1/2 HP EXP. | EXPLOSION PROOF REVERSIBLE AC RECTIFIED | 26 |
| EJ | 230 V AC, 1/2 HP EXP. | EXPLOSION PROOF REVERSIBLE AC RECTIFIED | 26 |
| H | HYDRAULIC | END PORTED 9/16-18 UNF | 6 |



ADD PINLOCK TO MOTORIZED MODELS

The spring-loaded lock pin assembly is designed to lock & secure the reel, even in mobile conditions over rough terrain.

Add suffix -XXP to the end

Example: 1275-6-50-A-BVXX-XXP



ADD 4-WAY/ROLLERS

4-way enclosed pinch-proof stainless steel rollers are 1 in diameter supported by powder coated steel brackets. Weight: Add 10 lbs. to reel weight.

For TOP Roller Change suffix to -BVXC
Example: 1275-6-50-C-BVXC

For BOTTOM Roller Change suffix to -BVFX
Example: 1275-6-50-C-BVFX



ADD 3-WAY/ROLLERS

3-way open spool roller assembly with 1.5 chrome-plated machined steel spools & 1.5 stainless steel tubing bottom roller & powder coated steel brackets. Weight: Add 14 lbs. to reel weight.

For TOP Roller Change suffix to -BVEX
Example: 1275-6-50-C-BVEX

For BOTTOM Roller Change suffix to -BVHX
Example: 1275-6-50-C-BVHX



ADD BEVEL CRANK HANDLE HOLSTER

Universal design mounts to either side of the reel with independent mounting holes. Features chained retaining pin to keep handle in place.

To order ask for accessory:

16704

WARNING: Cancer and reproductive Harm – See page 19 for more information – www.P65Warning.ca.gov














www.coxreels.com • 1.800.COX.REEL






AGRICULTURAL | PEST CONTROL

ACCESSORIES *MOTORIZED REELS*

SPEED CONTROLLERS FOR MOTORIZED MODELS

| | PART NO. | MOTOR OPTIONS | | | | | | | |
|--|--------------------|---------------|----|----|----|----|----|---|----|
| | | E | EB | ED | EA | EF | EJ | A | AB |
|  Explosion Proof Stationary Push Button Switch For 12V D.C. applications, must be used with solenoid. Cast 3/4" N.P.T. hub inlet. | 20882 | • | | | | | | | |
|  Vapor Proof Junction Box Includes box cover & gasket, has three 3/4" N.P.T. hubs. | 20883 | • | • | • | • | • | | | |
|  General Purpose Reversing Switch For direct starting & reversing of A.C. rewind motor. | 15210 | | | | • | | | | |
|  Sealed Push Button Switch Weather proof, dust proof momentary contact. To be used with solenoid. 30 AMP. | 20876 | • | • | • | | • | | | |
|  Solenoid Relay 12V D.C. for activating motor. | 20877 | • | | • | | | | | |
|  Circuit Breaker 50 amp automatic reset, circuit breaker. A circuit breaker is recommended for all 12V D.C. explosion proof motors. | 20878 | • | | • | | | | | |
|  Switch Box (Includes #20876, #20877, & #20878 & all parts needed to assemble the entire switch box) - Casing is powder coated crinkle black. | 8281 | • | | • | | | | | |
|  Electrical Box & Switch - Installs on any DC electric motor kit. - Push button switch mounts to frame, or to 3-Way Pin Lock. - Works with all guards and accessories. | 16780-12 12 VDC | • | | • | | | | | |
| | 16780-24 24 VDC | | • | | | • | | | |
|  115/230 AC/Volt Variable Speed Controller - 10-amp fuse. - On/off push button switch. - Forward/reverse feature. | 20875 | | | | | • | | | |
|  115/230 AC/Volt Variable Speed Controller - 10-amp fuse. - On/off push button switch. | 20874 | | | | | • | • | | |
|  115/230 AC/Volt Variable Speed Controller • 10-amp fuse. • Switch not included | 20873 | | | | | • | • | | |

SPEED CONTROLLERS FOR MOTORIZED MODELS

| | PART NO. | MOTOR OPTIONS | | | | | | | |
|--|----------|---------------|----|----|----|----|----|---|----|
| | | E | EB | ED | EA | EF | EJ | A | AB |
|  12 Volt DC Electric Motor Variable Speed Controller On/off push button switch. • Relay, 50-amp circuit breaker. • Forward/reverse feature. | 20872 | • | | • | | | | | |
|  12 Volt DC Electric Motor Variable Speed Controller On/off push button switch. • Relay, 50-amp circuit breaker. | 20871 | • | | • | | | | | |
|  12 Volt DC Electric Motor Variable Speed Controller • Switch not included | 20870 | • | | • | | | | | |
|  Electric Motor Speed Controller • For AC motors • Fixed speed - 50% less | 20868 | | | | • | | | | |
|  Control Valve Control valve for No. 4 Gast Air Motor available upon request | 15212 | | | | | | | • | |
| Control Valve Control valve for No. 6 Gast Air Motor available upon request | 15212-1 | | | | | | | | • |

DISTRIBUTORS MERCHANDISING DISPLAY

Coxreels Point of Purchase Merchandising Display is a proven "Sales Generator."

It has been tested & proven to increase sales. It's essential in demonstrating the controlled retraction of the EZ-Coil Safety line.

INCLUDES: Heavy-duty powder coated steel display rack, full color product specific hang tags, tri-fold brochures with mountable tri-fold holder & full-color display banner!

- Safe & Simple Demonstration Tool
- Creates Visual Impulse Purchases
- Mix & Match Up To Four Coxreels Models
- Durable Crinkle Black Powder-Coat Finish
- Adjustable Leveling Feet To Prevent Rocking
- Fast & Easy To Assemble
- No Additional Parts Necessary
- Offered Exclusively By Coxreels

Dimensions: 27" W x 58" H x 24" D

Weight: Aprx. 50 lbs

To get a P.O.P. display working for you, call Coxreels Customer Service Department at 1-800-269-7335 and order yours today!



WARNING: Cancer and reproductive Harm – See page 19 for more information – www.P65Warning.ca.gov

CUSTOMIZE YOUR REEL FROM CONCEPT TO COMPLETION



CUSTOMIZE YOUR REEL WITH COXREELS CUSTOM PRODUCTS:

Our engineering capabilities and manufacturing processes allow us to design and build top quality products for any conceivable application where reels are needed.

- Customize fluid paths/axes or create custom brackets, mounts, and accessories.
- Integrate with your specific hardware, systems, or devices.
- Modify drums, add divider disks, manipulate openings, or integrate hose handling devices.
- Combine features of various reel model lines, creating your own hybrid reel.
- Create custom retraction systems.
- Increase temperature and pressure capabilities, or multiply fluid paths.
- The possibilities are only limited by your imagination!

POWDER COAT OPTIONS*

3 digit suffix for spring driven or 4 digit suffix for hand crank & motorized models.



-BXX or -BXXX
Blue



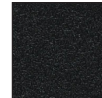
-RXX or -RXXX
Red



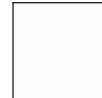
-GXX or -GXXX
Gray



-KXX or -KXXX
Gloss Black



-CXX or -CXXX
Crinkle Black



-WXX or -WXXX
White



-NXX or -NXXX
Green

*Minimum quantity & or dollar amount may apply



EZ-COIL®

SAFETY REWIND SYSTEM

EZ-Coil® is a patented controlled retraction technology offered exclusively on Coxreels' Safety Series reels. EZ-Coil® retracts up to 80% slower than conventional reels, resulting in workplace safety, protection from injury & costly property damage.

NOBODY SHOULD BE WITHOUT EZ-COIL®!

| up to 80% Slower Retraction | |
|------------------------------------|-------------------|
| Conventional SPRING DRIVEN REELS | COXREELS' EZ-COIL |
| SPEED | 25 ft./sec. |
| WHIPPING | 5-15 ft. |
| IMPACT | 500 ft./lbs. |
| | 5 ft./sec. |
| | 1 ft. |
| | 0-1 ft./lbs. |

Based on an independent evaluation performed by COXREELS. Depending on certain conditions, results may vary.

! SAFETY FIRST !

PLEASE REVIEW ALL SAFETY INFORMATION BEFORE CHOOSING AND USING ALL EQUIPMENT

SERIOUS INJURY, DEATH AND DESTRUCTION OF PROPERTY can result from improper selection or improper use of products described in this catalog. Since COXREELS has no control over the number and variety of applications for which its products may be purchased or the conditions under which they may be used, COXREELS liability on any claim, whether in contract, tort (including negligence), or otherwise, for any loss or damage shall in no case exceed the price paid for product or any part thereof which give rise to claim. However, the general information contained herein shall allow the customer to select and assume all responsibility for product acceptability and fitness for specific applications. As always, COXREELS technical assistance and support is available for your convenience.

NOTE: All designs, specifications, and dimensional data contained in this book are subject to change without notice. No additional warranties, express or implied, including warranties of merchantability for fitness for a particular purpose, are created by the descriptions and depictions of the products on in this book.

! PROP 65

In compliance of California's Proposition 65, Coxreels will be applying warning labels to all applicable products with regard to chemicals known to the state of California to cause cancer or reproductive harm.

All reels will carry the following warning.

Parts and components will carry warning labels relative to the respective materials used.

For more information see
<http://www.coxreels.com/prop65.html>



WARNING

This product can expose you to chemicals including nickel, which are known to the State of California to cause cancer, and chemicals including chromium, which are known to the State of California to cause birth defects or other reproductive harm.

For more information: www.P65Warnings.ca.gov/product



www.coxreels.com • 1.800.COX.REEL

AGRICULTURAL | PEST CONTROL



INDUSTRY CATALOGS



PRODUCT CATALOGS



CORPORATE HEADQUARTERS:

Tempe, Arizona USA

Phone: 480.820.6396 Fax: 480.820.5132

Toll Free: 800.COX.REEL Toll Free Fax: 800.229.REEL

www.coxreels.com info@coxreels.com



INTERNATIONAL:

EUROPE / MIDDLE EAST / AFRICA

Phone: +44 (0) 1536 464 990

Fax: +44 (0) 1536 464 999

www.crireels.com sales@cireels.com



CATALOG: LT-CAPCC21

AGRICULTURAL & PEST CONTROL REEL CATALOG