

## ABOUT US

### Thank you for choosing Coxreels!

Entering into our 10th decade under the third generation of family ownership and operation, we are proud to manufacture the industry's highest quality and widest variety of hose, cord, and cable reels. Our products are called on to be the most reliable product built to effectively perform in various settings and applications.

## OUR MISSION

### WE WILL LEAD THE INDUSTRY IN QUALITY & INNOVATION

We know that there can be no compromise when you live the philosophy of building the best! Every decision regarding our product design is made with one unwavering goal... to make the required product the very best it can be.



## PROFESSIONAL GRADE FEATURES



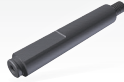
### CPC™ POWDER COAT

Our blue powder coat finish that is long lasting, chip resistant & rust inhibiting



### BRASS SWIVEL

External fluid path, machined from solid brass, full flow, swivel for simple seal maintenance



### STEEL AXLE

25 mm solid steel axle & lubricated bearings for extra strength & durability. Not a hollow tube & no fluid travels through it



### SUPER HUB™

6 mm steel frame & support arm with dual axle support with SUPER HUB™ for increase strength & durability



### COMPONENT COVER

External CPC™ powder coated steel components cover for simple slip ring routine maintenance



### EZ-COIL® EQUIPPED

A patented safety system that retracts up to 80% slower than conventional reels



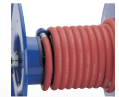
### CNC SPUN DISCS

All steel rolled edges & ribbed discs for added safety, strength & durability



### CARTRIDGE MOTOR

Enclosed factory tuned & matched cartridge style motor for safe & easy replacement



### LOW PROFILE RISER

Low profile riser with open drum slot allows for smooth even hose wraps that will not pinch or bind your hose. **NO HUMP!**



### ALL WELDED STEEL "A" FRAME

All welded steel "A" frame for strength & durability. **NOT BOLTED!**



### 2 YEAR WARRANTY

Coxreels proudly stands behind our reels as they are built to last!



### USA MADE, QUALITY & SUPPORT

We take great pride in designing, building & supplying the world's finest reels made here in the U.S.A.



TRIFOLD: LT-VM-M21

HOSE, CORD, & CABLE

# REELS

COXREELS SINCE 1923

To see more **COXREELS** products go online to:

[www.coxreels.com](http://www.coxreels.com)

or call **1.800.COX.REEL**

CORPORATE HEADQUARTERS:

Tempe, Arizona USA

Phone: 480.820.6396 Fax: 480.820.5132

[www.coxreels.com](http://www.coxreels.com) [info@coxreels.com](mailto:info@coxreels.com)



INTERNATIONAL:

EUROPE / MIDDLE EAST / AFRICA

Phone: +44 (0) 1536 464 990

Fax: +44 (0) 1536 464 999

[www.crireels.com](http://www.crireels.com) [sales@crireels.com](mailto:sales@crireels.com)



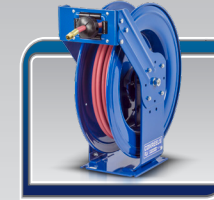
### YOUR REELS

MODEL # \_\_\_\_\_

MODEL # \_\_\_\_\_

MODEL # \_\_\_\_\_

Authorized COXREELS® Reseller/Distributor



## SPRING DRIVEN REELS

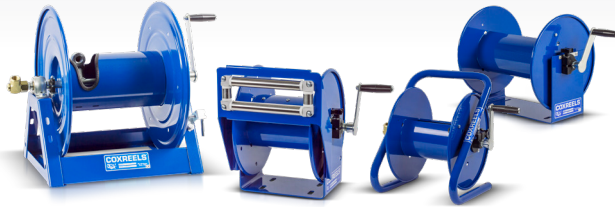
Auto-Retractable Heavy Duty Industrial Grade Reels



- Hose I.D. from 6 mm to 38 mm
- Pressures to 345 Bar
- Lengths to 38 m
- Durable proprietary CPC™ powder coat
- Detachable roller guides
- Steel, aluminum or stainless steel construction
- Full-flow swivel inlets
- Adjustable rubber hose stop
- Factory tuned & matched cartridge style spring motor
- Multi-position locking ratchet
- Side mount reels
- Adjustable guide arm

## HAND CRANK & PORTABLE REELS

Large Capacity Industrial Grade Reels For Long Hose Lengths



- Hose I.D. from 6 mm to 51 mm
- Pressures to 689 Bar
- Lengths to 213 m
- Steel construction
- Durable proprietary CPC™ powder coat
- Optional roller guide assemblies
- Direct hand crank & bevel gear hand crank
- Low profile outlet riser & open drum slot design
- Hand carry & dolly reels
- Adjustable tension brake to prevent backlash

## MOTOR DRIVEN HOSE REELS

Large Capacity Industrial Grade Reels For Long Hose Lengths



- Hose I.D. from 10 mm to 51 mm
- Pressures to 689 Bar
- Lengths to 213 m
- Steel construction
- Durable proprietary CPC™ powder coat
- Choice of electric, air & hydraulic motors
- Low profile outlet riser & open drum slot design
- Direct gear drive or chain & sprocket
- Optional roller guide assemblies
- Optional motor switches & speed controllers

## EZ-COIL SAFETY SERIES REELS

Controlled Self-Retracting Reels For Increased Safety



- Patented EZ-Coil® controlled retraction
- Up to 80% slower retraction
- Reduce workplace accidents
- Increased operator safety
- Pressures to 345 Bar
- Factory tuned & matched cartridge style spring motor
- Lengths to 30 m
- Adjustable rubber hose stop
- Multi-position locking ratchet
- Durable proprietary CPC™ powder coat process
- Adjustable guide arm

## STAINLESS STEEL REELS

Heavy Duty Professional Grade Reels For Superior Corrosion Resistance



- Hose I.D. from 10 mm to 25 mm
- Up to 276 Bar
- Lengths to 122 m
- Stainless steel construction
- Available in spring driven, hand crank & motorized versions
- Stainless steel fluid path with non-toxic grease
- Built off the strengths of each series
- Choice of finish (SP or SS)

## SPECIALTY REELS

Heavy Duty Professional Grade Specialty Reels For Unique Needs



- Storage Reels**  
Built with no swivel & riser for storage only
- Pure Flow Series**  
Stainless steel fluid paths with non-toxic grease for pure fluids
- DEF Reels**  
Built to handle Diesel Exhaust Fluid
- Vacuum Series**  
Available in vacuum & vacuum/pneumatic combinations
- Alumi-Pro®**  
Professional grade strength without the weight
- Nitro-Pro®**  
Designed for nitrogen inflation systems

## ELECTRIC CORD & CABLE REELS

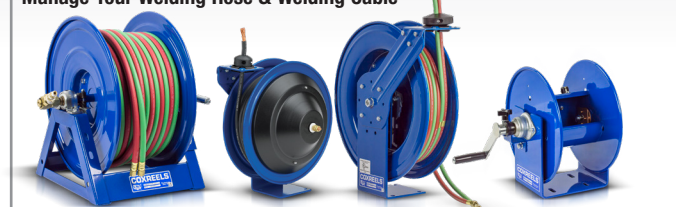
Heavy Duty Professional Grade Reels For Electrical Cord, Welding Cable & Grounding Cable



- Available in 1.31 mm² (16 GA), 3.31 mm² (12 GA), 5.26 mm² (10 GA)
- Lengths to 76 m
- Steel construction
- Durable proprietary CPC™ powder coat
- Detachable roller guides
- Adjustable rubber cord stop
- Factory tuned & matched cartridge style spring motor
- Multi-position locking ratchet
- Adjustable guide arm
- Your choice of electrical accessories
- Spring driven models available in EZ-COIL

## WELDING HOSE & CABLE REELS

Heavy Duty Professional Grade Reels To Manage Your Welding Hose & Welding Cable



- Available in Oxy-Acetylene or "T" grade
- Welding hose with lengths up to 76 m
- Available in welding cable for grounding or lead applications with lengths up to 183 m
- Steel construction
- Available in spring driven, hand crank & motorized versions
- Durable proprietary CPC™ powder coat
- Choice of accessories
- Spring driven models available in EZ-COIL

## PROFESSIONAL UPGRADES & ACCESSORIES

Spring Driven, Hand Crank & Motor Driven Accessories



- Mounting Brackets
- Roller Brackets
- Choice of Swivels
- Electric Motor Options
- For a complete list of upgrades & accessories please view our main catalog or website

